



Unified Planning Work Program

**for the
Birmingham Metropolitan
Planning Organization**

FY 2021

October 2020 – September 2021

This document is posted at
<http://www.rpcgb.org/upwp/>

For further information, please contact
Scott Tillman, Director of Planning and Operations
Regional Planning Commission of Greater Birmingham (RPCGB)
Two 20th Street North, Suite 1200
Birmingham, AL 35203

Email: stillman@RPCGB.org

Adopted: August 12, 2020

Regional Planning Commission of Greater Birmingham

Staff to the MPO

Charles Ball, Executive Director

Scott Tillman, Director of Planning and Operations

Michael Kaczorowski, Principal Planner

Lindsay Puckett, Principal Planner

Harry He, Transportation Engineer

Brett Isom, GIS Manager

Marshall Farmer, Senior GIS Analyst

Laurel Land, Senior Planner

Lisa Smith, CommuteSmart/APCA Program Manager

This UPWP was prepared as a cooperative effort of the U.S. Department of Transportation (USDOT), Federal Highway Administration (FHWA), Federal Transit Administration (FTA), Alabama Department of Transportation (ALDOT), and local governments in partial fulfillment of requirements in Title 23 USC 134 and 135, amended by the FAST Act, Sections 1201 and 1202, December 4, 2015. The contents of this document do not necessarily reflect the official views or policies of the U.S. Department of Transportation.

TRANSPORTATION CITIZENS COMMITTEE 2020

Chair: Phillip Wiedmeyer

Vice-Chair: Willie Osborne

| Last Name | First Name | Membership District |
|------------------|-------------------|----------------------------------|
| Adcock | Joanne | North/Northwest Jefferson County |
| Bivins | Tyrome | Shelby County |
| Brown | Anna | City of Birmingham |
| Dye | Jackie | Shelby County |
| Ferrell | Butch | City of Birmingham |
| Giddens | Harry | City of Birmingham |
| Ludwig | Bruce | South/Southeast Jefferson County |
| McKenna | Barbara | North/Northwest Jefferson County |
| Osborne | Willie | City of Birmingham |
| Owen | Pittman | City of Birmingham |
| Parker | Ryan | South/Southeast Jefferson County |
| Richardson | Robert | Shelby County |
| Saling | Joe | West/Southwest Jefferson County |
| Stokes | Sarah | South/Southeast Jefferson County |
| Wiedmeyer | Phillip | South/Southeast Jefferson County |

TRANSPORTATION TECHNICAL COMMITTEE 2020

Chair: Christie Hester
 Vice Chair: Christopher Brady

| Last Name | First Name | Representing |
|-------------|-------------|--|
| Abel | Richard | ClasTran |
| Bailey | Clark | At-Large |
| Baldwin | Nan | Birmingham Business Alliance (BBA) (non-voting) |
| Boozer | Ken | Jefferson County Dept of Roads and Trans |
| Boyd | Geoffrey | UAB Campus Planning |
| Brady | Christopher | City of Vestavia Hills |
| Burgess | Matthew | At-Large |
| Caudle | Richard | At-Large |
| Cobb | Matthew | City of Homewood |
| Dahlke | Dan | St. Clair County Engineer |
| Darden | Richard | At-Large |
| Davis | André | UAB Parking and Transportation Services |
| Dawkins | Greg | At-Large |
| Dawson | Aaron | Federal Highway Administration (FHWA) (non-voting) |
| Gambrel | Tim | City of Birmingham Chief Planner |
| Gore | Ron | ADEM Air Division Chief (non-voting) |
| Hale | Doug | Bicycle/Pedestrian |
| Hall | Alacyia | Traffic Safety |
| Haynes | Steve | ALDOT Birmingham Area |
| Hester | Christie | At-Large |
| Holladay | Scott | Shelby County Highway Dept |
| Hora | Michael | ALDOT Local Transportation Bureau (non-voting) |
| Howard | Darrell | At-Large |
| Johnson | Joshua | BJCTA |
| Kuyrkendall | Bert | City of Birmingham Transportation |
| Lacke | Matt | Jefferson County Dept of Health |
| Lawlor | Elizabeth | Railroad Industry |
| Leonard | DeJarvis | ALDOT East Central Region |
| Lowe | Greg | At-Large |
| Murphy | J.T. | At-Large |
| Perry | Blair | At-Large |
| Peterson | Doug | At-Large |
| Proctor | Sherri | City of Alabaster |
| Reeves | Chris | City of Hoover |
| Rogers | Becky | At-Large |
| Seagle | Doug | At-Large |
| Spivey | Nicole | Federal Transit Authority (FTA) (non-voting) |
| Stephenson | Jeff | At-Large |
| Stewart | Dustin | Blount County Engineer |
| Strickland | Keith | At-Large |
| Sullivan | Andrew | At-Large |
| Tucker | Brett | At-Large |
| Vermillion | Rob | At-Large |
| Wieseman | Ben | REV Birmingham |
| Womack | Eric | Shelby County Development Services |

MPO POLICY COMMITTEE 2020

Chair: Randy Cole
 Vice Chair: Stan Hogeland
 Secretary: Fred Hawkins

*Advisory Committee Member

| Title | Last Name | First Name | Representing |
|--------------|--------------|------------|--|
| Councilor | Abbott | Valerie | City of Birmingham |
| Councilor | Alexander* | Wardine | City of Birmingham |
| Mr. | Ammons | Steve | Unincorporated Jefferson County |
| Mr. | Armstrong* | Allen | Blount County Public Transportation |
| Mr. | Bartlett* | Mark | Federal Highway Administration (non-voting) |
| Mr. | Beard | Cletus | St. Clair County |
| Mr. | Bittas | André | Shelby County - Pelham |
| Mayor | Brasseale | Jerry | Jefferson County Municipalities - Pleasant Grove |
| Mayor | Brocato | Frank | Jefferson County Municipalities - Hoover |
| Ms. | Carter* | Heather | Unincorporated Jefferson County |
| Mayor | Choat* | Buddy | Jefferson County Municipalities - Trussville |
| Mr. | Cole* | Randy | Shelby County |
| Mr. | Eddington | Mike | City of Birmingham |
| Mr. | Fowler* | James | City of Birmingham |
| Mayor | Gulley | Kenneth | Jefferson County Municipalities - Bessemer |
| Mayor | Hall | Mark | Shelby County - Helena |
| Mr. | Hatcher | Chris | City of Birmingham |
| Mr. | Hawkins | Fred | Shelby County - Alabaster |
| Mayor | Henderson | Tom | Jefferson County Municipalities – Center Point |
| Ms. | Hester* | Christie | Shelby County |
| Mayor | Hogeland | Stan | Jefferson County Municipalities – Gardendale |
| Mr. | Holladay* | Scott | Shelby County |
| Ms. | Inman* | Michelle | City of Birmingham |
| Mr. | Jacks* | Tim | St. Clair County Public Transportation |
| Commissioner | Knight* | Joe | Unincorporated Jefferson County |
| Mr. | Leonard* | DeJarvis | ALDOT East Central Region |
| Mayor | Lowery | Jim | Jefferson County Municipalities – Fultondale |
| Mr. | Markert* | Cal | Unincorporated Jefferson County |
| Mr. | Martin | Mac | Jefferson County - Hoover |
| Mayor | McCondichie* | Roger | Jefferson County Municipalities - Brookside |
| Ms. | Nolen* | Maranda | St. Clair County |
| Councilor | O’Quinn | Darrell | City of Birmingham |
| Mr. | Phillips* | Ed | ALDOT Local Transportation Bureau (non-voting) |
| Mayor | Ragland | Johnny | Jefferson County Municipalities - Warrior |
| Mr. | Reeves | Chris | Shelby County - Hoover |
| Mr. | Revell | Edwin | City of Birmingham |
| Mayor | Richardson* | Gary | Jefferson County Municipalities - Midfield |
| Senator | Roberts | Dan | State of Alabama – State Senator (non-voting) |
| Commissioner | Shepherd | Rick | Shelby County Commission |
| Mr. | Smith* | Theodore | Birmingham-Jefferson County Transit Authority |
| Commissioner | Stephens | Jimmie | Unincorporated Jefferson County |
| Mayor | Tuck | Loxil | Jefferson County Municipalities - Tarrant |
| Mayor | Ware | Steve | Jefferson County Municipalities - Hueytown |
| Mr. | Washburn* | Nick | Blount County |
| Mayor | Welch | Stewart | Jefferson County Municipalities - Mountain Brook |
| Mayor | Woodfin | Randall | City of Birmingham |
| Mr. | Wyatt* | Jim | Jefferson County - Hoover |

RESOLUTION 2020-2

FY 2021 Unified Planning Work Program Birmingham Metropolitan Planning Organization (MPO)

WHEREAS, the Birmingham Metropolitan Planning Organization (MPO) is the organization designated by the Governor of the State of Alabama as being responsible, together with the State of Alabama, for implementing the applicable provisions of 23 USC 134 and 135 (amended by the FAST Act, Sections 1201 and 1202, December 2015); 42 U.S.C. 2000d-1, 7401; 23 CFR 450 and 500; 40 CFR 51 and 93; and

WHEREAS, the U.S. Department of Transportation requires all urbanized areas, as established by the U.S. Bureau of the Census, doing area-wide urban transportation planning that involves more than one Department of Transportation operating administration, to submit a Unified Planning Work Program as a condition for meeting the provisions of 23 U.S.C. § 134; and

WHEREAS, the Regional Planning Commission of Greater Birmingham, in cooperation with the Alabama Department of Transportation, has prepared a Unified Planning Work Program for Fiscal Year 2021; and

NOW THEREFORE, BE IT RESOLVED that the Birmingham Metropolitan Planning Organization (MPO) adopts the Unified Planning Work Program for FY 2021 this 12th day of August, 2020.


Birmingham MPO Chair, Vice Chair, or Secretary


Charles Ball, Executive Director, RPCGB

TABLE OF CONTENTS

| | |
|---|----|
| The Transportation Planning Process | 1 |
| Task 1.0 Administration | 5 |
| 1.1 MPO Administration | 5 |
| 1.2 Unified Planning Work Program | 6 |
| 1.3 Capital and Operating Purchases..... | 7 |
| 1.4 Education and Training | 9 |
| Task 2.0 Planning Information | 10 |
| 2.1 Data Collection and Management..... | 10 |
| 2.2 Data Analysis and Forecasting | 12 |
| 2.3 Geographic Information Systems | 14 |
| 2.4 Model Development Program | 16 |
| Task 3.0 Public Involvement..... | 18 |
| 3.1 Public Involvement and Outreach | 18 |
| Task 4.0 Environmental Process Planning..... | 20 |
| 4.1 Air Quality Planning | 20 |
| 4.2 Environmental Consultation Process..... | 21 |
| 4.3 Advance Planning, Programming, and Logical Engineering (APPLE) | 23 |
| 4.4 Climate Change..... | 26 |
| Task 5.0 Transportation Systems | 28 |
| 5.1 Regional Transportation Plan | 28 |
| 5.1.1 Air Quality Conformity Analysis and Reporting..... | 30 |
| 5.1.2 Regional Transportation Plan Project Listing for Air Quality Conformity | 31 |
| 5.2 Transportation Improvement Program (TIP)..... | 32 |
| 5.2.1 Amend TIP Project Listings for Air Quality Conformity | 33 |
| 5.3 Public Transportation Planning | 34 |
| 5.3.1 Federal Transit Administration 5310 Grant Program | 35 |
| 5.4 Active Transportation Planning | 36 |
| 5.5 Logistics Systems Planning | 38 |
| 5.6 Transportation System Performance Management and Monitoring..... | 40 |
| 5.7 Transportation Safety Planning | 42 |
| 5.8 Technical Assistance for Local Communities and Agencies..... | 44 |
| Task 6.0 Programs and Technical Assistance | 46 |
| 6.1 CommuteSmart Program (Rideshare) | 46 |
| 6.2 Building Communities Program | 47 |
| Task 7.0 ADA | 48 |
| 7.1 Compliance | 48 |

APPENDICES

| | |
|--|-----|
| List of Acronyms..... | A-1 |
| Table 1: FY 2020 Organizational Responsibility, Federal | A-2 |
| Table 2: FY 2020 Funding Sources..... | A-4 |
| Structure of the Birmingham MPO | A-5 |
| Metropolitan Planning Area/Transportation Management Area Map..... | A-6 |
| Planning Factors | A-7 |
| Livability Indicators | A-8 |
| Current and Potential Planning Studies | A-9 |

THE TRANSPORTATION PLANNING PROCESS

OVERVIEW

As a condition to the receipt of federal highway and transit capital and operating assistance, each Metropolitan Planning Organization (MPO) is required to have a transportation planning process. This process includes the development of a long-range or regional transportation plan, short-range transportation improvement program, a plan to promote attainment of air quality standards, human services coordinated transportation plan, and a work program that identifies planning and project development activities.

Certification of the transportation planning process is conducted every four years by the Federal Highway Administration (FHWA) and the Federal Transit Administration (FTA) and is necessary to receive surface transportation program, air quality, national highway system, interstate maintenance, state bridge replacement, and transit capital and operating funds. The Birmingham Metropolitan Planning Organization (MPO) membership is geographically representative of the Metropolitan Planning Area (MPA), the entire boundaries of Jefferson and Shelby counties, and portions of Blount and St. Clair Counties, based upon the most recent (2010) decennial U.S. census.

The Regional Planning Commission of Greater Birmingham (RPCGB) is the designated recipient of U.S. Department of Transportation (USDOT) planning funds used to assist the MPO in the performance of its responsibilities. These funds are designated by the State of Alabama, in agreement with the RPCGB.

Work tasks described in this report are conducted on a continual basis. An agreement among the Alabama Department of Environmental Management (ADEM), Alabama Department of Transportation (ALDOT), Birmingham-Jefferson County Transit Authority (BJCTA), RPCGB, Jefferson County Department of Health (JCDH), and the MPO outlines the responsibility of each organization in the transportation planning process.

PURPOSE

The Unified Planning Work Program (UPWP) is the document that guides the MPO in fulfilling its planning responsibilities for the upcoming year. The primary objective of the UPWP is the development of an integrated planning program that considers planning activities and coordinates these activities to produce a total transportation plan that serves everyone. The UPWP presents the budget and work tasks necessary to accomplish and maintain the transportation planning process within the Birmingham MPA.

TITLE VI IN THE PREPARATION OF THE UPWP

It is the policy of the Birmingham MPO to provide open public input in the preparation of plans and programs, consistent with the requirements under the current transportation legislation:

1. Open Process: To have an open planning process that encourages early and continued public participation.
2. Information Access: To provide complete and timely information to interested parties and the public regarding the plans, programs, procedures, policies, and technical data produced or used during the planning process.
3. Notice of Activities: To provide timely and adequate public notice of meetings, reviews, and major document availability.
4. Public Input and Organization Response: To demonstrate consideration and recognition of public input and to provide appropriate responses thereto.
5. Inclusive Process: To protect low income and minority communities/citizens from disproportionate adverse impacts based on planning and implementation of projects and programs identified in the

RTP and TIP. The MPO provides considerable opportunities for participation, both formal and informal, for citizens to share ideas and concerns throughout the planning and decision-making process.

Additionally, the Birmingham MPO is and will be compliant with and will follow all Title VI laws, processes, and programs to include the following:

- Civil Rights Act of 1964, 42 USC 2000d, et seq. which prohibits exclusion from participation in any federal program on the basis of race, color, or national origin.
- 23 USC 324 which prohibits discrimination on the basis of sexual orientation, adding to the landmark significance of 2000d. This requirement is found in 23 CFR 450.334(1).
- Rehabilitation Act of 1973, 29 USC 701 Section 504, which prohibits discrimination on the basis of a disability, and in terms of access to the transportation planning process.
- Americans with Disabilities Act of 1990 which prohibits discrimination based solely on disability. ADA encourages participation of people with disabilities in the development of transportation and para-transit plans and services. All meetings conducted by the MPO will take place in locations which are accessible by persons with mobility limitations or other impairments.
- Executive Order 12898 or referred to as Environmental Justice, which requires that federal programs, policies and activities affecting human health or the environment will identify and avoid disproportionately high and adverse effects on minority or low-income populations. The intent is to ensure that no racial, ethnic, or socioeconomic group bears a disproportionate share of negative environmental consequences resulting from government programs and policies.
- A Limited English Proficiency (LEP) Plan is required by Title VI of the Civil Rights Act of 1964, Executive Order 13166, and FTA Circular C 4702.1B, October 2012. The Birmingham MPO has completed a Four Factor Analysis of the Birmingham MPA to determine requirements for compliance with the Limited English Proficiency (LEP) provisions. An LEP Plan has been developed and can be accessed as part of the Public Participation Plan at <http://www.rpcgb.org/transportation-planning/public-involvement/>

The UPWP is developed annually and is available on the RPCGB website prior to being introduced for discussion at committee meetings. All committee meetings of the MPO are preceded by notices (containing the agenda, date, time, and location of the meeting) and supporting documentation. Notice is provided at least one week prior to meetings or as designated in committee bylaws. Notice is also provided to local media representatives and groups and individuals representing disadvantaged communities. All notices ask that individuals needing special accommodations notify the RPCGB at least three business days prior to the date of the meeting, so necessary arrangements can be made. Notices are posted on the internet and the bulletin board outside RPCGB offices. The public has an opportunity to participate in discussions held at the committee meetings. Detailed public participation procedures are outlined in the 2014 Public Participation Plan (PPP) which can be found at <http://www.rpcgb.org/transportation-planning/public-involvement/>

SCOPE OF THE PLANNING PROCESS

Planning tasks reflect the planning factors in the Fixing America's Surface Transportation (FAST) Act.

1. Support the economic vitality of the metropolitan area
2. Increase the safety of the transportation system for motorized and non-motorized users
3. Increase the security of the transportation system for motorized and non-motorized users
4. Increase accessibility and mobility of people and freight
5. Protect and enhance the environment, promote energy conservation, improve quality of life

6. Enhance the integration and connectivity of the transportation system, across and between modes, for people and freight
7. Promote efficient system management and operation
8. Emphasize the preservation of the existing transportation system
9. Improve the resiliency and reliability of the transportation system and reduce or mitigate stormwater impacts of surface transportation
10. Enhance travel and tourism

The committee process is the basis for conducting UPWP tasks. Meetings of the Transportation Citizens Committee, Transportation Technical Committee, MPO Advisory Committee, and the MPO Policy Committee are held monthly or as needed. In addition to the four transportation committees, subcommittees and joint committees are regularly used for the development of the Transportation Improvement Program (TIP), Regional Transportation Plan (RTP), congestion management activities, and major transit projects.

Most traditional tasks are funded with planning funds (PL). Specialized tasks related to ridesharing, air quality, and local land use/transportation, utilize supplemental funds from the Congestion Mitigation Air Quality Program (CMAQ) and Surface Transportation Block Grant (STBG). Large-scale transit planning projects are funded through the FTA.

Livability Principles and Indicators

Federal and state agencies are using performance measures as a way of ensuring greater accountability for expenditure of public funds. ALDOT has adopted the Livability Principles and Indicators as a sustainability measurement against future actions. These indicators will be used to develop the Birmingham RTP, TIP, Public Participation Plan, Congestion Management Plan, and the Air Quality Conformity Report.

All planning tasks will be measured against these Livability Principles:

1. Provide more transportation choices
2. Promote equitable, affordable housing
3. Enhance economic competitiveness
4. Support existing communities
5. Coordinate policies and leverage investment
6. Value communities and neighborhoods

As a measure of these principles, the MPO has developed Livability Indicators:

1. Mode Share – percent of travelers using different travel modes
2. Jobs/Housing Balance – total number of jobs/total housing by area
3. Travel Time Index – congested vs. free-flow travel time
4. Number of crashes/incidents by travel mode (community safety emphasis)
5. Project Funding Diversity – percent of transportation projects utilizing multiple funding sources (federal, state, local)
6. Partnerships and Public Involvement – number of partnerships and documentation of PI Activities

Transportation Performance Management

In accordance with MAP-21 and the FAST Act performance-based surface transportation program, appropriate targets have been adopted by ALDOT, the Birmingham MPO, and the Birmingham-Jefferson County Transit Authority.

Vision

Following is the vision statement for the Birmingham metropolitan area:

Transportation has become the connective tissue of the region. By foot, by bike, by car, or by public transportation, residents experience reduced congestion and higher mobility, both of which are the result of four important decisions:

- 1. Preserving and improving the existing local and interstate highways;*
- 2. Developing a responsive, efficient, and effective public transportation system;*
- 3. Supporting the use of alternative transportation modes; and*
- 4. Encouraging sustainable development patterns.*

This UPWP contains work tasks necessary for the RPCGB, BJCTA, and ALDOT to conduct transportation planning activities for the Birmingham MPA.

TASK 1.0: ADMINISTRATION

1.1 MPO Administration

Objectives

To provide transportation committees, agencies, governments, and the public with transportation-related information, education, and training, to support transportation operations, and federal, state, and local transportation initiatives.

Previous Work

- Prepared for and participated in monthly committee meetings
- Attended RPCGB Board meetings
- Prepared and submitted invoices to ALDOT and reviewed RPCGB financial statements
- Provided information to the RPCGB auditors and reviewed audit report
- Reviewed all agreements for consistency with bylaws
- Reviewed all funding agreements
- Prepared for and participated in TMA certification review
- Provided information and assistance to individuals, businesses, organizations, and committees
- Participated in cooperative efforts with agencies and organizations outlined in the 3C agreement

Proposed Work

- Monthly business and committee meetings (Citizens, Technical, Advisory, and Policy)
- Ad hoc committee meetings (Congestion Management)
- Attend RPCGB Board, Finance, Program Budget, and annual meetings
- Prepare and submit monthly invoices to ALDOT and review monthly financial statements
- Provide information to the RPCGB auditors and review draft and final audit reports
- Review agreements for consistency with regulations and bylaws
- Prepare scopes of work for programs and projects
- Provide information and assistance to individuals, businesses, organizations, and committees
- Participate in cooperative efforts with governments, agencies, and organizations

Products

- Committee notices, agendas, minutes, resolutions, and supporting documentation
- Invoices to ALDOT
- Staff services necessary to ensure certification of the transportation planning process

Staffing

RPCGB

Timeline for Proposed Work

Ongoing activities throughout the fiscal year

Financial Responsibility

FHWA PL and FTA 5303 planning funds have been consolidated into one PL category

| | |
|-------|------------------|
| Total | <u>\$280,410</u> |
| PL | \$224,328 |
| Local | \$56,082 |

1.2 Unified Planning Work Program

Objectives

To produce a document that outlines work and identifies planning priorities and activities to be carried out within the Birmingham MPA.

Previous Work

- Adopted a UPWP that identified tasks and funding sources
- Annual report of activities to ALDOT
- Prepared FY 2021 UPWP

Proposed Work

- UPWP activities will be identified by using planning emphasis areas for expenditure of PL funds. Priorities for funding projects in the TIP are determined from the National Planning Goals, federal planning factors, and the interests of the transportation committees
- Draft and submit annual report to ALDOT, noting the status of tasks and DBE participation
- Prepare a FY 2022 UPWP

Products

- UPWP for FY 2022
- FY 2021 annual report

Staffing

RPCGB

Timeline for Proposed Work

- FY 2022 UPWP - Summer 2021
- FY 2021 annual report - September 2021

Financial Responsibility

FHWA PL and FTA 5303 planning funds have been consolidated into one PL category

| | |
|-------|-----------------|
| Total | <u>\$22,500</u> |
| PL | \$18,000 |
| Local | \$4,500 |

1.3 Capital and Operating Purchases

Objectives

To maintain, upgrade, and purchase software and hardware for gathering information, simplifying tasks, and articulating data to support transportation planning functions.

Previous Work

Purchased demographic information

Proposed Work

- Software purchases, including license/maintenance fees and upgrades, are regularly made for geographic information systems, surveys, databases and spreadsheets, graphics, and operating systems
- Capital purchases to include servers, personal computers and peripherals, and hardware/software for field data collection
- Analyze existing and potential transit routes and evaluate demographic information
- Monitor and contextualize capacity utilization, operational performance, and finance data

As outlined in the *Agreement for Administering U.S. Department of Transportation for Financial Assistance for Transportation Planning between the State of Alabama and the Regional Planning Commission of Greater Birmingham*, Article 21 states, in part, “All purchases over \$1,500 must be approved by the State, in advance, in writing, to be eligible for reimbursement.” Further, ALDOT requires anticipated purchases more than \$5,000 to have a line item entry in the UPWP.

The following capital and operating equipment are programmed:

| Product | Total Cost | UPWP Task | Purpose |
|---|------------|-----------|--|
| 3D Analyst | \$500 | 2.3 | Desktop extension license for GIS analysis |
| Adobe Creative Cloud/Pro | \$8,000 | 2.2 | Software subscription for online map publishing and document production |
| ArcEditor CU/SU | \$9,900 | 2.3 | Desktop software licenses for GIS analysis and mapping |
| ArcGIS Online/ ArcGIS Pro | \$5,000 | 2.3 | GIS subscription service for cloud-based mapping |
| ArcInfo CU | \$3,000 | 2.3 | Desktop software licenses for GIS analysis and mapping |
| ArcServer Enterprise | \$5,000 | 2.3 | GIS server software application |
| ArcView CU | \$2,700 | 2.3 | Desktop software licenses for GIS analysis and mapping |
| ArcView SU | \$700 | 2.3 | Desktop software licenses for GIS analysis and mapping |
| Community Viz | \$1,400 | 2.2 | Desktop software license for GIS data analysis and modeling |
| Equipment for Planning | \$3,500 | 2.3 | Tablets, Projectors, kiosk mounts for public input, etc. |
| ESRI Community Analyst | \$1,000 | 2.3 | GIS subscription service for data profiles and analysis |
| InfoGroup | \$8,000 | 2.1 | Employment data purchase for GIS analysis |
| Linear Referencing System (LRS) Data Acquisitions | \$2,500 | 2.2 | Transportation data purchases for LRS event table production, GIS analysis, and model forecasting |
| Aerial Imagery, LiDAR, & Planimetric Data | \$30,000 | 2.3 | Provide spatial data resources in support of agency operations for program management and project analysis |
| Maxwell Render Full Suite | \$1,100 | 6.2 | Advanced 3D rendering software |
| MioVision Data Processing | \$3,000 | 5.6 | Traffic cameras data collection and processing |
| Network Analyst | \$500 | 2.3 | Desktop extension license for GIS analysis |

| Product | Total Cost | UPWP Task | Purpose |
|-------------------------------|-----------------|-----------|--|
| SketchUp Pro | \$1,100 | 6.2 | 3D modeling software upgrade |
| Southern Exposure Information | \$5,000 | 2.2 | Construction Permits and Housing Market Data for socioeconomic and economic forecasting/analysis |
| Spatial Analyst | \$500 | 2.3 | Desktop extension license for GIS analysis |
| Woods and Poole | \$500 | 2.2 | Demographic and socioeconomic data purchase for analysis and forecasting. |
| X Tools Pro | \$265 | 2.3 | Desktop software licenses for GIS analysis and mapping |
| TOTAL ANNUAL COSTS | \$93,165 | | |

Products

- Software and upgrades
- Hardware and servers
- Data and data products
- License and maintenance fees

Staffing

RPCGB and third-party suppliers

Timeline for Proposed Work

Ongoing activities throughout the fiscal year

Financial Responsibility

FHWA PL and FTA 5303 planning funds have been consolidated into one PL category

| | |
|-------|-----------------|
| Total | <u>\$93,165</u> |
| PL | \$74,532 |
| Local | \$18,633 |

1.4 Education and Training

Objectives

To develop and maintain technical proficiency of staff to enable proper guidance and development of the planning process.

Previous Work

Staff members attended, made presentations, hosted, and assisted with workshops, conferences, and trainings; subscribed to and read relevant professional publications.

Proposed Work

- Attend, make presentations, host, and/or assist with workshops, conferences, and trainings
- Subscribe to and read relevant professional publications

Products

- Annual transportation/planning conferences
- Training for elected officials, municipal staff, and consultants
- Other workshops, conferences, and trainings

Staffing

RPCGB

Timeline for Proposed Work

Ongoing activities throughout the fiscal year

Financial Responsibility

FHWA PL and FTA 5303 planning funds have been consolidated into one PL category

| | |
|-------|-----------------|
| Total | <u>\$87,500</u> |
| PL | \$70,000 |
| Local | \$17,500 |

TASK 2.0: PLANNING INFORMATION

2.1 Data Collection and Management

Objective

To collect, create, and maintain data in support of local and regional transportation and community planning projects.

Previous Work

The RPCGB has purchased data and data subscriptions from vendors including ESRI, InfoGroup, Southern Exposure, Geolytics, and other supplementary data services such as Strava and Inrix transportation data. The RPCGB expanded its existing GIS data inventory to include additional economic, transportation, property, environmental, and demographic data. Data collection activities have focused on population and socioeconomic datasets, local developments, transportation, and employment characteristics.

The maintenance and expansion of event tables for use in the regional LRS is necessary to better manage and analyze transportation issues. The RPCGB has continued to collect and build transportation data to improve the capabilities of the LRS. Event tables specific to transit routes, the Inrix (travel time and freight) datasets, the TIP, and functionally classified roadways have been evaluated for incorporation into the LRS.

RPCGB continues to expand its GIS resources. Through the sustained production and maintenance of demographic, socioeconomic and transportation data, RPCGB has advanced its GIS data inventory and has added cloud-based mapping resources, geo-applications, and open data resources to its GIS assets. Mobile GIS resources have additionally been utilized.

Proposed Work

The RPCGB will purchase data from vendors such as ESRI, InfoGroup, Geolytics, Southern Exposure, Woods and Poole Economics, and other supplemental data services including origin and destination data, and Inrix (to support travel time data collection efforts for functionally classified non-National Highway System roadways), to support nonmotorized transportation. Reports generated will address demographic/socio-economic trends, county profiles, comparison reports, socioeconomic datasets, transportation system inventories, travel characteristics, and infographics. Additional data collection activities may include, but are not limited to, physical data collection, market data, industry subscriptions, online data purchases, and data services.

The RPCGB will work with the Alabama Department of Transportation (ALDOT) to coordinate and align the RPCGB's LRS with ALDOT's LRS to create a near seamless data flow between the two systems. The RPCGB also will maintain and expand event tables for use in these LRS as it is necessary to better identify, analyze, and manage transportation issues. The RPCGB will continue to collect and build transportation data to improve the capabilities of the LRS. Event tables specific to transit routes, roadway ownership and maintenance, the TIP, and functionally classified roadways will be incorporated into the LRS. The maintenance and expansion of event tables for use in the regional LRS is necessary to better manage and analyze transportation issues. The RPCGB will continue to collect and build transportation data to improve the capabilities of the LRS.

The RPCGB will continue to expand its web presence through cloud-based mapping functionalities and open data resources. This web enhancement provides easier public access to tabular and spatial data to better facilitate data sharing and decision making. In addition to the provision of maps, map services, down-

loadable spatial data, traffic counts, and associated reports, this portal is intended to provide a single-source point for information to the public, elected officials, and the development community.

The MPO will collect, maintain, and report on performance indicators, to include metrics to support the federal Planning Factors, for use in benchmarking transportation system performance and informing the decision-making process. This would include project prioritization and project selection as directed by Congress and regulated by the FHWA, and in support of other tasks within this document.

Products

- Update of the spatial data inventory and spatial data assets
- Spatial data expansion and maintenance through necessary development, purchases, and partnerships
- Production of demographic, socioeconomic, economic, transportation and other planning-related data files
- Produce regional reports that compare selected data and regional development characteristics. These products will include demographic and socioeconomic regional trends, regional population and employment projections, county and local profiles, and themed analytical data reports and maps.
- Report on local roadway facility traffic counts, transit ridership, non-motorized travel information, and other transportation and planning statistics for incorporation into the LRS. Other information collected includes, but is not limited to, freight/goods movement, incident management, travel times, congestion by travel mode, TSMO, and regional roadway characteristics.
- Addition and update of static maps to the RPCGB website
- Expansion of the online map gallery to make selected thematic maps readily available for public use through the RPCGB website and project websites
- Continued expansion of public domain spatial datasets to the Open Data portal

Staffing

RPCGB, direct contract labor, and/or third-party contractors for activities, and organizations

Timeline for Proposed Work

Ongoing activities throughout the fiscal year

Financial Responsibility

FHWA PL and FTA 5303 planning funds have been consolidated into one PL category

| | |
|-------|-----------------|
| Total | <u>\$50,000</u> |
| PL | \$40,000 |
| Local | \$10,000 |

2.2 Data Analysis and Forecasting

Objectives

To collect, create, and maintain current and forecasted demographic and socioeconomic data used for the transportation demand model and other planning activities.

Previous Work

The RPCGB has continued to develop and refine demographic and socioeconomic data in support of its transportation and community planning efforts. In addition to the development of traffic analysis zone (TAZ) datasets, several intermediate year datasets have been developed. This data was developed for multiple census geographies, including TAZ, Block Group, Census Tract, Planning District, and County levels, and has been utilized for travel demand evaluations, as well as local area projects and publications. Continued refinement and maintenance of these forecasts has included data purchases, such as those from InfoGroup, ESRI, and Woods & Poole Economics. The data has been used in projects and publications, including the Regional Transportation Plan (RTP) and in support of other agency planning objectives.

The RPCGB has continued to collect a variety of data, such as Census, Economic, Natural Resources, Transportation, Transit, and related demographic and socioeconomic data, for use within the overall local and regional planning environment.

The RPCGB developed and maintained a regional transportation demand model for the Birmingham MPA, which is a primary screening tool used to identify deficiencies in the future transportation system. The Cube Voyager (Avenue) modeling software was used for travel demand modeling and all other applicable processes, up to and including air quality conformity analysis in support of budget-based estimate reporting.

Proposed Work

Proposed work includes the continued refinement and maintenance of forecast datasets. Proposed work also includes the development, maintenance, and reporting of regional planning factors. Toward this effort, additional data may be purchased from selected vendors for use in the development of the forecasts, and may include, but not be limited to, such vendors as: ESRI, InfoGroup, Woods and Poole, Southern Exposure, Geolytics, and/or other appropriate economic and/or forecasting tools and models.

In support of broader regional planning efforts, the proposed forecasting will consider data and projections outside the MPO boundaries. The RPCGB will also coordinate with appropriate agencies beyond the MPO boundaries in this effort.

Products

- Socioeconomic, demographic, and economic datasets (base year and forecast) by TAZ, planning district, census tract, county, and region
- Regional Projections Report
- Special Reports
- Support of other agency reports and studies

Staffing

RPCGB, direct contract labor, and/or third-party contractors for activities, and organizations

Timeline for Proposed Work

Ongoing activities throughout the fiscal year

Financial Responsibility

FHWA PL and FTA 5303 planning funds have been consolidated into one PL category

| | |
|-------|-----------------|
| Total | <u>\$37,500</u> |
| PL | \$30,000 |
| Local | \$7,500 |

2.3 Geographic Information Systems

Objectives

To provide spatial data resources, including software, hardware, and data, to support agency operations for both program management and project analysis.

Previous Work

The RPCGB has been successful in developing and expanding its GIS capabilities, including ESRI cloud-based mapping services. This mapping service has enabled the RPCGB to publish interactive thematic maps in a public domain gallery. In addition to the visual dissemination of regional data, users can query data and incorporate published features into their own maps. The RPCGB has additionally added the functionality of geospatial applications, enhanced map viewing applications, and launched an Open Data portal for the dissemination of public domain geospatial data.

RPCGB has continued to expand its library of GIS datasets, including county parcel updates, street center-lines, building footprints, and aerial imagery. Continued utilization of the ESRI geospatial platform has been critical to the success of the planning staff through improved project analysis. RPCGB upgraded to ArcMap 10.7 and has remained current on maintenance through its participation in the state Enterprise License Agreement (ELA) program. The RPCGB has also continued to utilize mobile GIS technology to enhance data collection efforts.

Proposed Work

- Continue to develop and expand GIS capabilities specific to the ESRI cloud-based map service platform and geospatial/mobile application needs
- Continue to build inventory of GIS datasets, including both raster and vector datasets
- Acquire routine imagery and/or LiDAR updates to support its planning efforts
- Continued acquisition, development, and maintenance of GIS-related data for use in the spatial analysis and visual display components of transportation and community planning projects
- Continue to advance the development of an online GIS open data portal site in cooperation with participating agencies to enable public access to selected GIS datasets (public domain) to promote data sharing and use of common datasets
- Additional training and/or GIS-related software or hardware, applications, extensions, or licenses may be acquired once evaluated and determined to be necessary and appropriate to fulfill project or staff expectations
- Map Services

Products

- Hardware/software acquisition
- Derivative products and analyses
- Partnerships and collaborations
- Updated orthophotographic imagery
- Updated LiDAR
- The continuation of data collection, development, and maintenance
- The continued expansion of the GIS system including the cloud-based platform environment
- The expansion of GIS capabilities through training, conferences, workshops, and product evaluations
- Local government hardware and software assistance
- ESRI maintenance of the GIS system, map services and analysis tools (ESRI ArcMap, ArcGIS Online, ArcGIS Pro, and ESRI Community Analyst)

- The identification and acquisition of additional GIS visualization and analytical tools such as ArcGlobe, ArcScene, City Engine, and ArcGIS Pro

Staffing

RPCGB, direct contract labor and/or third-party contractors for activities, and organizations

Timeline for Proposed Work

Ongoing activities throughout the fiscal year

Financial Responsibility

FHWA PL and FTA 5303 planning funds have been consolidated into one PL category

| | |
|-------|------------------|
| Total | <u>\$106,250</u> |
| PL | \$65,000 |
| STPBH | \$20,000 |
| Local | \$21,250 |

2.4 Model Development Program

Objectives

To develop and maintain traffic models, air quality emission models, and traffic simulation model for the transportation planning process.

Previous Work

Cube Voyager is the primary travel demand modeling software in use by the Birmingham MPO. It is used to analyze travel demands within the Census 2010 Birmingham MPA, network travel demand modeling, and in support of air quality conformity estimate preparation using the Motor Vehicle Emission Simulator (MOVES) software. RPCGB reviewed OD data sets by Streetlytics and incorporated some of it into the module to improve the travel demand output. The highway network expanded by including portions of Blount and St. Clair Counties based on the Census 2010. Within the Birmingham MPA, both Cube Voyager and MOVES2010b are used for the 2045 RTP and for Air Quality Transportation Conformity Determination, respectively. In early of FY2019, completed both travel demand model runs and air quality model runs for the 1997 ground level Ozone 1-hour standard for the 2040RTP by FHWA/EPA. With new base year 2015, highway networks were coded for years 2017, 2024, 2034, 2040, and 2045 for the 2045RTP. Travel demand model runs and air quality model runs were completed for the 2045RTP.

The MOVES2010b has been updated to the latest version of Air Model from EPA, MOVES2014 (version a and b). MOVES2014b is used as the regional transportation conformity air model for the new FY 2020-2023 TIP and 2045RTP in 2019. MOVES2014b is used for the regional emission rate estimates and CMAQ project emission calculations in 2018. Traffic projection and OD analysis based on travel demand model are conducted in various studied and projects in 2018. The transit network updates based on 2015-2016 are completed.

In FY 2011, Cube Avenue was purchased and has been successfully tested for subarea traffic simulation. The Cube Avenue model was successfully expanded and applied at the regional level, enabling the Birmingham MPO to evaluate the specific impacts of projects at a larger geographic scale, as well as the ability to conduct before and after studies.

In FY 2015, Synchro Studio was purchased and has been installed successfully for corridor traffic simulation.

Proposed Work

The RPCGB will maintain the Cube Voyager and Air Model for the short and long range transportation plans. In recognizing the changes affecting the Greater Birmingham region, and the changing needs of the MPA as it relates to transportation planning, the RPCGB will continue to review the OD data sets generated from prob data sets. The transit network and future transit development plan will be merged to model. The model will be modified to address regional travel demands, congestion situation, and performance measures. The more local data sets will be compiled as inputs for Air Model.

Specific work tasks include:

- Development and maintenance of the regional travel demand model for the Birmingham MPA, as needed for RTP and TIP updates
- Network and social economic modifications to fit in the new Census 2020 requirements
- Training of staff to utilize the best modeling practices
- Utilization of the model in support of existing projects and scenario planning
- Development and maintenance of MOVES2014b. Update MOVES input files with all local data sets and validate speed profiles based on local observations. Emissions factors will be developed in accordance with MOVES2014b to meet the requirements set forth in 40 CFR 51 and 93.

- Cooperate with ALDOT, ADEM, FHWA, FTA, EPA, and other agencies to oversee/share the data collections, methodologies of data development, documentations, and modeling practices
- Project level analysis air quality models will be developed
- Will add scripts into models to address performance measures related to congestion mitigation and air quality
- Modify the model/factors to merge the new OD data sets to the cube voyager
- Use Synchro Studio to enhance analyses of existing traffic conditions and if necessary, operational and scenario planning in the corridor studies and the transportation sectors of the Comprehensive Plan

Products

- New base year 2020 with OD data sets and New Census 2020
- Travel demand model network updates
- MOVES2014b Air Quality Models for regional emission rate data sets
- Project Level Analysis Model Runs for CMAQ projects
- Congestion and Air Quality Analysis related to Performance Measures

Staffing

RPCGB, direct contract labor, and/or third-party contractors for activities, and organizations

Timeline for Proposed Work

Ongoing activities throughout the fiscal year

Financial Responsibility

FHWA PL and FTA 5303 planning funds have been consolidated into one PL category

| | |
|-------|------------------|
| Total | <u>\$175,000</u> |
| PL | \$140,000 |
| Local | \$35,000 |

TASK 3.0: PUBLIC INVOLVEMENT

3.1 Public Involvement and Outreach

Objectives

To maintain a process for providing opportunities for everyone to be involved in the transportation planning process, with attention to individuals who are disadvantaged and/or vulnerable.

Previous Work

- Announcements for all meetings, trainings, and public involvement were posted on the RPCGB website and emailed to parties of record. Notices and supporting documentation were provided to committee members.
- Supported public meeting and gathered comments for TMA Certification Review
- Maintained and updated website with links to documentation
- All public involvement procedures were followed; social media was used to communicate with the public; online participation for all planning activities was encouraged.
- Completed DBE and Title VI report and submitted to ALDOT
- Updated Public Involvement Plan (PIP)

The MPO facilitated, participated in, and/or hosted training opportunities, workshops, and other opportunities for education on multimodal transportation.

Proposed Work

- Coordinate with ALDOT on setting goals, objectives, performance measures, and targets, as required by the FAST Act, for inclusion into the operational plans (Regional Transportation Plan, Transportation Improvement Program, Congestion Management Plan, and Conformity Report)
- Maintain MPO website with updates and links to project documentation
- Update and maintain MPO participant database
- Indicator data collection, processing, and presentation
- Meetings and meeting announcements, including monthly committee meetings, public involvement meetings, project meetings, and community outreach, as needed
- Newsletters
- Direct mailings, email announcements, press releases, flyers, notices, and fact sheets
- Facilitate technical workshops. Costs to include, but are not limited to, speakers, logistics, and handouts.
- Develop interactive online surveys and other web-based outreach activities
- Prepare and distribute comment forms and surveys

Title VI, Americans with Disabilities Act, and DBE Activities:

- Documentation of minority representation
- Documentation of third-party DBE activities conducted for projects funded by FHWA and FTA

Products

- Documentation of public involvement meetings/outreach activities
- Documentation and reporting of public involvement outreach
- Title VI Report
- DBE Report

- Transportation planning/project web pages
- MPO member training and education events/courses

Staffing

RPCGB, direct contract labor and/or third-party contractors

Timeline for Proposed Work

- Title VI Report – October 2020
- DBE Report – October 2020

Financial Responsibility

FHWA PL and FTA 5303 planning funds have been consolidated into one PL category

| | |
|-------|-----------------|
| Total | <u>\$37,500</u> |
| PL | \$30,000 |
| Local | \$7,500 |

TASK 4.0: ENVIRONMENTAL PROCESS PLANNING

4.1 Air Quality Planning

Objectives

To achieve and maintain compliance with national air quality standards, to protect and improve public health, to minimize the economic impacts on existing businesses and support economic growth consistent with clean air goals in Jefferson and Shelby counties.

Previous Work

Alabama Partners for Clean Air (APCA) worked many outreach events throughout the year, particularly in the business and civic community. APCA conducted voluntary emission testing, promoted idle-free zones, and facilitated a Car Care program. A report documenting the program and funding activities of APCA was completed for FY 2019.

Proposed Work

The following activities will be conducted by the APCA, with assistance provided by the RPCGB:

- Marketing and Public outreach to educate the public about air quality issues and the consequences that individual choices have on air quality
- Employer and employee outreach to get major employers involved in air quality issues and encourage employees to travel to work by modes other than single-occupant vehicles
- Science and Environmental Education to teach children about air pollution, its health impacts, and how it can be prevented
- Clean Cities and Alternative Fuels program to reduce emissions from fleet vehicles through hybrid technology and alternative fuels. The Alabama Clean Fuels Coalition is lead partner
- Air Quality Forecasting program produces and issues daily forecasts of particle pollution levels in Jefferson and Shelby counties. The lead partner is the Jefferson County Department of Health
- Voluntary Emissions Testing and Vehicle Repair provides a free emissions check for vehicle owners and encourages owners of high emitters to have their vehicles serviced
- Program Administration includes managing all air quality contracts, processing invoices, producing an annual report, monitoring performance and execution of contracts, and providing support to the APCA
- Coordinated with ALDOT on setting goals, objectives, performance measures, and targets, as required by the FAST Act

Products

Annual Report documenting contract performance of organizations, including emissions reductions for the previous fiscal year

Staffing

RPCGB, direct contract labor and/or third-party contractors for activities, and organizations

Timeline for Proposed Work

Annual Report – April 2021

Financial Responsibility

| | |
|-------|------------------|
| Total | <u>\$812,500</u> |
| CMAQ | \$650,000 |
| Local | \$162,500 |

4.2 Environmental Consultation Process

Objectives

To link the transportation planning and environmental assessment processes early in the project development phase. To inform the project development and NEPA processes with the results of the environmental consultation process. To establish inter-agency, cross-disciplinary communication, and education. To identify and pursue collaborative, cross-disciplinary environmental mitigation strategies and funding opportunities.

Previous Work

- Collected a Brownfields database for the Voluntary Cleanup Program and Targeted Assessment locations
- Participated in the Brownfield Task Force
- Consulted with federal and state resource agencies regarding the development and advancement of federal-aid, and state/locally funded transportation projects
- Environmental data collected to catalog and update information specific to:
 - Hazardous Waste Air Release (FRS sites)
 - Superfund Sites
 - Toxic Release Inventory
 - Brownfields
 - Environmental Hazards

Proposed Work

- Environmental Mapping - continuous updates and refinements to the environmental maps and data including cultural resources
- Continue to participate in and provide support to Brownfield planning efforts
- Promote consistency between the RTP and state and local land use plans and plans for conservation and development
- Encourage the reduction or mitigation of stormwater impacts on surface transportation
- Outreach and Education Activities - Provide educational opportunities and training to state and municipal governments environmental planning topics

Notes:

1. The Alabama Department of Transportation – Environmental Technical Section (ALDOT ETS) shall remain the sole arbiter of environmental issues on state and federal projects in Alabama and must be consulted in all instances. ALDOT may seek consultation with the Federal Highway Administration (FHWA) on certain matters and will seek federal approval on a project only when all issues have been addressed.
2. Except for certain duties and responsibilities extended to the Birmingham MPO in writing and specific to a project and/or a consultant representing an MPO for a specific project, all other actions are the province of ALDOT ETS.
3. Early or initial environmental coordination relating to a specific project with state and federal resource agencies shall only be carried out by the ALDOT ETS.

Products

- Environmental data acquisition and mapping
- Outreach and Education Activities

Staffing

RPCGB, direct contract labor and/or third-party contractors for activities, and organizations

Timeline for Proposed Work

Ongoing activities throughout the fiscal year

Financial Responsibility

FHWA PL and FTA 5303 planning funds have been consolidated into one PL category

| | |
|-------|----------------|
| Total | <u>\$2,250</u> |
| PL | \$1,800 |
| Local | \$ 450 |

4.3 Advanced Planning, Programming, and Logical Engineering (APPLE)

Objectives

To improve the quality and timelines of the overall project development process by:

- Assisting local governments in determining project feasibility in advance of entering an expensive and extended project development process
- Assisting project sponsors in better articulating project scope and understanding both the planning considerations and potential costs
- Assisting the project development process by educating local governments about the ALDOT project development process
- Providing information to the Birmingham MPO to better manage uncertainties in program funding

Previous Work

Completed and Ongoing APPLE Projects include:

- City of Vestavia Hills - Cahaba Liberty Trail Project (complete)
- Homewood Intersection and Corridor Traffic Operational Study (complete)
- St. Clair County US 411 from CR 10 (Park Avenue) to Kerr Road (complete)
- Mountain Brook Traffic Study (complete)
- Pelham Trails and Greenways Study (complete)
- Mountain Brook Bridges Study (complete)
- Pelham New Roads Study (complete)
- Helena School Intersections Study (complete)
- Jefferson County Acton Road Study (complete)
- UAB Complete Streets/Road Diet Study (complete)
- Dunnington Valley Greenway Study (complete)
- Mountain Brook Sidewalks Study (complete)
- Lakeshore Extension Study (complete)
- CR-47/CR-39 Intersection Study (complete)
- Vulcan Greenway Study (complete)
- Crosshaven Drive Study (complete)
- Hollywood Blvd/US-280 Study (complete)
- 20th Street Study (complete)
- Avenue F Bridge Study (complete)
- Argo Intersections Study (complete)
- Gardendale New Road Study (complete)
- Cahaba River Road Study (complete)
- UAB North-South Streets Study (complete)
- Springville SR-174/Murphrees Valley Road Study (complete)
- US-411 Interchange Study (complete)
- Commuter Rail Study (complete)
- Crestwood Blvd Corridor Study (complete)
- Calera - State Route 25 Realignment Study (complete)
- Vestavia Hills Traffic Operations Study Phase 1 (complete)
- Mountain Brook Overton Road Traffic Study
- Homewood Central Avenue Connector Study (complete)
- Chelsea Chesser Drive Study
- Trussville Chalkville Road Study

Proposed Work

The RPCGB will continue to assist local governments and small project sponsors in assessing a project's feasibility. The feasibility assessment will better inform the local governments and small project decision-making process and aid them in determining their level of commitment for advancing the project. The goals of the APPLE program will be accomplished in several ways, including:

- Funding consultant/contractor work activities that directly develop of APPLE reports
- Managing the feasibility assessment process for small municipalities/local governments
- Support consultant/contractor activities as related to the development of APPLE reports
- Educating project sponsors and contractors about the ALDOT project development process, to include education of the NEPA process

Safety Studies

In addition to the feasibility studies for various transportation projects, the APPLE program will assist local governments in performing safety studies. The purpose of these studies will be to identify the cause of crashes and recommend appropriate safety enhancements and countermeasures that conform to the Manual on Uniform Traffic Control Devices (MUTCD). Some of the tasks performed in the studies will include:

- Data collection and analysis
- Field site visits
- Identify safety enhancements and countermeasures
- Estimate costs for the proposed improvements
- Development of report

The reports will not publish specific crash data and they will contain the appropriate clause as per ALDOT's document titled - The Alabama Transportation Planner's Guide to Safety Data Access and Documentation – June 2016.

Notes:

1. The Alabama Department of Transportation – Environmental Technical Section (ALDOT ETS) shall remain the sole arbiter of environmental issues on state and federal projects in Alabama and must be consulted in all instances. ALDOT may seek consultation with the Federal Highway Administration (FHWA) on certain matters and will seek federal approval on a project only when all issues have been addressed.
2. Except for certain duties and responsibilities extended to the Birmingham MPO in writing and for a specific project and/or a consultant representing an MPO for a specific project, all other actions are the province of ALDOT ETS.
3. Early or initial environmental coordination relating to a specific project with state and federal resource agencies shall only be carried out by the ALDOT ETS.

Products

- Project Specific Advanced Planning Reports and Technical Memoranda
- Project status Reports
- Project Development Educational Workshops and Seminars

Staffing

RPCGB, ALDOT, direct contract labor and/or third party contractors for activities, and organizations

Timeline for Proposed Work

Ongoing activities throughout the fiscal year

Financial Responsibility

| | |
|-------|------------------|
| Total | <u>\$500,000</u> |
| STPBH | \$400,000 |
| Local | \$100,000 |

4.4 Climate Change

Objectives

- Develop Climate Change evaluation metrics
- Evaluate the RTP's impact on climate change
- Evaluate planned and programmed transportation projects' impact on climate change
- Provide guidance about regional strategies for air quality and congestion mitigation, as well as energy efficiency to reduce the Birmingham MPA's carbon footprint

Previous Work

Greenhouse Gas (GHG) emissions are set up as an option in the air quality model in FY 2018, 2019, and 2020. Previous work produced a report titled *Climate Change Considerations and On-Road Greenhouse Gas Emissions in the Birmingham Metropolitan Planning Area*.

Proposed Work

The Birmingham MPO has reassessed its approach to climate change, and how it will incorporate climate change into the metropolitan planning process. As such, the Birmingham MPO has chosen to narrow its focus, and will address road infrastructure vulnerability. The RPCGB will conduct a Vulnerability and Risk Assessment of transportation infrastructure by performing a thorough inventory and analysis of current road culverts/road crossings and report on the status and conditions of these assets. An element of this assessment will include the evaluation the impact of storm events and future climate change scenarios on the assets. The process for completing this project is to emulate, or follow, FHWA's current Vulnerability and Risk Assessment Conceptual Model and to utilize other studies that have taken place in the region to promote consistency of data.

Other climate change evaluation activities will consider:

- Update GHG inventory, and specifically the contribution of mobile source emissions
- Evaluate and monitor mobile source energy consumption
- Develop Climate Change Performance Measures - Establish GHG emission and mobile source energy consumption baseline measures
- Integrate Performance Measures - Incorporate GHG and mobile source energy consumption measures into the MPO's transportation system performance metrics
- Develop GHG and Energy Consumption Targets - Develop a recommended GHG emissions and mobile source energy consumption targets
- Identify a menu of potential climate change adaptation strategies

Products

- Vulnerability analysis of transportation infrastructure to climate change and weather hazards
- GHG emissions inventory
- Baseline climate change performance measures

Staffing

RPCGB, direct contract labor and/or third-party contractors, and organizations

Timeline for Proposed Work

Ongoing activities throughout the fiscal year.

Financial Responsibility

FHWA PL and FTA 5303 planning funds have been consolidated into one PL category

| | |
|-------|----------------|
| Total | <u>\$3,125</u> |
| PL | \$2,500 |
| Local | \$ 625 |

TASK 5.0: TRANSPORTATION SYSTEMS

5.1 Regional Transportation Plan

Objectives

To ensure that the MPO maintains a long-range transportation plan for the Birmingham MPA that is:

- Technically based on the latest available data for land use, demographics, and travel patterns
- Comprehensive in nature and supports the development of a multimodal transportation system
- Philosophically based on regional goals and values, and are informed by the federal Planning Factors and Livability Principles
- Financially based on predictable, reliable funding sources

To ensure that the Regional Transportation Plan (RTP) promotes a performance-based planning approach, is consistent with local comprehensive plans and goals, and supports the federal Planning Factors and Livability Principles.

Previous Work

- Created an Executive Summary brochure highlighting the key elements of the 2045 RTP
- Prepared for and participated in the Transportation Management Area Planning Certification Review
- Amended the 2045 RTP Capacity Project List and maps as appropriate to be consistent with the FY2020-2023 Transportation Improvement Program
- Continued coordination with ALDOT to fulfill federal requirements related to performance measures for performance-based planning including the setting and tracking of targets
- Coordination with IAC, ALDOT, FHWA and MPO committees

Proposed Work

- Continue coordinating with ALDOT to fulfill federal requirements related to performance measures for performance-based planning, including the tracking and progress of its transportation investments toward achieving the 2021 targets for PM2 and PM3 performance measures
- Amend the 2045 RTP Capacity Project List and maps as appropriate to be consistent with the FY2020-2023 Transportation Improvement Program
- Partner or participate in regional transportation planning efforts conducted by ALDOT, other state and federal partners, member municipalities, or other agencies
- Coordinate with ALDOT and municipalities to develop a comprehensive process that would enable the MPO staff to track the status of all projects within the MPA
- Continue data collection for use in RTP reports and analysis of proposed project and policy recommendations
- Update the Transportation System Management and Operations Plan
- In support of the PEA – *Models of Regional Planning* (referenced in Task 2.2), the continued development of the RTP will consider the transportation system outside the MPO boundaries; coordinate with appropriate agencies beyond the MPO boundaries in this effort.

Products

- Amend the 2045 RTP Capacity Project list and maps as needed
- Performance Measures tracking and reporting

Staffing

RPCGB and direct contract labor and/or third-party contractors for activities, and organizations

Timeline for Proposed Work

Ongoing activities throughout the fiscal year

Financial Responsibility

FHWA PL and FTA 5303 planning funds have been consolidated into one PL category

| | |
|-------|-----------------|
| Total | <u>\$62,500</u> |
| PL | \$50,000 |
| Local | \$12,500 |

5.1.1 Air Quality Conformity Analysis and Reporting (RTP)

Objectives

To demonstrate that the RTP, and the funded projects and programs contained within it and the TIP, conform to the approved regional air quality standards as determined by the Statewide Implementation Plan (SIP), and are consistent with the Clean Air Act of 1990.

Previous Work:

- The RPCGB worked with the IAC to review proposals related to air quality and to recommend ways to reduce emissions and congestion. A new set of analysis years for air quality conformity has been set.
- Air quality model runs via MOVES2014b were conducted for the Ground Level Ozone standards and the PM2.5 standards in FY 2019. Project level analysis for CMAQ projects are completed in FY 2018 and FY 2019.
- Complete the 2018 and 2019 emission rate runs for Jefferson and Shelby Counties
- Complete 2019 Air Quality Conformity Determination Report for the 2045 Regional Transportation Plan and the FY 2020-2023 Transportation Improvement Program.
- Complete 2019 Annual CMAQ obligated project emission report

Proposed Work

- Continue the involvement and cooperation with IAC to monitor air quality for the MPA
- Based on MOVES2014b, continue the air quality conformity analysis and the air quality conformity determination reporting to comply with changes in the regulations governing air quality and transportation planning
- Continue to update input files of MOVES2014b with local data collections when they become available
- Review and Development of CMAQ project emissions estimate methodologies
- Climate Change will be supported (see Task 4.4 for details)

Products

- Emission analysis updates
- An Amended Report that demonstrates the total projected emissions are within the allowable limits for any changes of the 2045 RTP and FY 2020-2023 TIP or other changes required.
- Emission rate data sets for Jefferson and Shelby Counties
- The Annual CMAQ obligated project emission report

Staffing

RPCGB, direct contract labor, and/or third-party contractors for activities, and organizations

Timeline for Proposed Work

- Ongoing activities throughout the fiscal year
- Annual CMAQ obligated project emission report – February 2021

Financial Responsibility

FHWA PL and FTA 5303 planning funds have been consolidated into one PL category

| | |
|-------|-----------------|
| Total | <u>\$35,000</u> |
| PL | \$28,000 |
| Local | \$7,000 |

5.1.2 Regional Transportation Plan Project Listings for Air Quality Conformity

Objectives

To amend the RTP as required, using additions and deletions to the program listings, and modifications to existing scopes of work and budgets.

Previous Work

- Monitor the proposed projects and changes of project scopes of work
- Identify capacity projects to be included in the conformity analysis
- Select capacity project based on the air quality conformity analysis years

Proposed Work

- Continue monitoring the capacity project changes
- Identify new highway capacity projects to be added to the 2045 RTP/TIP
- Monitor highway capacity project schedule changes crossing the conformity analysis years
- Review and document proposed new highway capacity projects constituting a Plan amendment that are subject to assignment to an air quality conformity year and a system level conformity determination

Products

- Capacity Project map updates
- Capacity Project Listing updates if there is any required change of 2045 RTP and FY 2020-2023 TIP

Staffing

RPCGB

Timeline for Proposed Work

Updated capacity project listing table when needed

Financial Responsibility

FHWA PL and FTA 5303 planning funds have been consolidated into one PL category

| | |
|-------|----------------|
| Total | <u>\$2,125</u> |
| PL | \$1,700 |
| Local | \$ 425 |

5.2 Transportation Improvement Program (TIP)

Objectives

To develop a list of federally-funded transportation projects to be completed by the ALDOT, the BJCTA, local governments, and other project sponsors. Monitor the Financial Constraint, the status of projects programmed (to include advancement) under the STPBH, and the CMAQ, and achievement of the federal Livability Principles and Indicators. Administer TIP amendment requests and ensure that the Transportation Improvement Program is advancing the goals, objectives, and priorities of the RTP.

Previous Work

- Coordinate TIP modifications and amendments with ALDOT and project sponsors
- TIP Amendments - the RPCGB processed TIP amendments as needed
- Continued to maintain TIP financial constraint
- Annual Obligations Listing - Published a list of obligated projects for the previous fiscal year
- Continued to monitor the status of CMAQ and STPBH projects
- Updated and refined on-line interactive TIP map
- Coordinated with ALDOT on setting goals, objectives, performance measures, and targets, as required by the FAST Act, for inclusion into the TIP

Proposed Work

- TIP Amendments - the RPCGB will process TIP amendments as needed
- Continue to maintain TIP financial constraint
- Annual Obligations Listing - RPCGB will publish a list of obligated projects for previous fiscal year
- Continue to monitor status of TAP, CMAQ and STPBH projects
- Identify and contact sponsors of inactive projects with a focus on projects over 10 years old
- Update and refine online interactive TIP map
- Continue to coordinate with ALDOT on requirements from the FAST Act, for inclusion into the TIP

Products

Annual Listing of Previous Year Obligated (Authorized) Projects
TIP Amendment resolutions

Staffing

RPCGB

Timeline for Proposed Work

Annual Obligations Listing – Fall 2020

Financial Responsibility

FHWA PL and FTA 5303 planning funds have been consolidated into one PL category

| | |
|-------|-----------|
| Total | \$166,250 |
| PL | \$133,000 |
| Local | \$33,250 |

5.2.1 Amend TIP Project Listings for Air Quality Conformity

Objectives

To amend the TIP, both annually and as required, in accordance with additions and deletions to the RTP project and program listings and modifications to existing scopes of work and budgets.

Previous Work

- Complete the CMAQ project emissions estimates
- Select existing and committed projects for plan updates

Proposed Work

- Continue to calculate project emissions if needed
- Continue monitoring the capacity project changes
- Identify new highway capacity projects to be added to the 2045 RTP/TIP
- Monitor highway capacity project schedule changes crossing the conformity analysis years
- Review and document proposed new highway capacity projects constituting a Plan amendment that are subject to assignment to an air quality conformity year and a system level conformity determination

Products

- Project listings
- Project location map updates
- Project emission benefit worksheets

Staffing

RPCGB

Timeline for Proposed Work

Ongoing activities throughout the fiscal year based on needs

Financial Responsibility

FHWA PL and FTA 5303 planning funds have been consolidated into one PL category

| | |
|-------|----------------|
| Total | <u>\$2,500</u> |
| PL | \$2,000 |
| Local | \$ 500 |

5.3 Public Transportation Planning

Objectives

To promote a public transportation system that connects people to activities and services, while encouraging economic development, especially in distressed and/or gap areas. Assist existing and potential public transportation providers with planning, service delivery, financing strategies, and evaluation of multimodal needs, deficiencies, and opportunities.

Previous Work

- Participated with BJCTA in the administration of the local Section 5310 grant
- Assisted City of Birmingham re bus rapid transit (BRT) and VIA on-demand transportation
- Technical assistance to Moovmo, a new on-demand start-up focusing on individuals with disabilities
- Included approved 5310 projects in the TIP and STIP
- Supported BJCTA with transit planning guidance and assistance
- Provided technical assistance to agencies, governments, and transportation providers
- Completed documentation to become direct recipient for FTA Section 5310 funds

Proposed Work

- Coordinate with ALDOT and BJCTA on setting goals, objectives, performance measures, and targets required by the FAST Act
- Provide technical assistance to agencies, governments, and transportation providers
- Continue to assist City of Birmingham with implementation of BRT
- Identify and evaluate local bus and paratransit needs
- Assist BJCTA with maintaining and modifying transit system and route maps
- Assist with coordination of elderly and disabled transportation, including:
 - Administration of FTA Section 5310 grant, including RFP and procurement
 - Maps and analysis of demographic data
 - Technical assistance with service enhancements, alternate modes, and consolidation of services/ central call center
 - Update Human Services Coordinated Transportation Plan
 - Ensure approved projects are included in the TIP and STIP

Products

- Human Services Coordinated Transportation Plan
- Data collection and analysis
- Route and system maps (as requested)
- Requests for Projects (FTA 5310)

Staffing

RPCGB, transportation providers, contract labor and/or third-party contractors

Timeline for Proposed Work

Ongoing activities throughout the fiscal year

Financial Responsibility

FHWA PL and FTA 5303 planning funds have been consolidated into one PL category

| | |
|-------|-----------------|
| Total | <u>\$40,500</u> |
| PL | \$32,400 |
| Local | \$8,100 |

5.3.1 Federal Transit Administration 5310 Grant Program

Objectives

To competitively award grant funding for capital equipment for the purpose of improving mobility for seniors and individuals with disabilities. Administer and distribute federally allocated funding and ensure subrecipients' compliance with regulations. Oversee and assist with procurement of capital over the amount of \$2,000.

Previous Work

In the past, BJCTA has administered the distribution of funding and compliance. RPCGB was responsible for the application process and some procurement.

Proposed Work

- Draft and publish a request for projects
- Assemble a committee to review requests and develop a list of recommendations
- Present recommendations to MPO for approval
- Ensure projects are included in the TIP and STIP
- Contract with subrecipients and oversee procurement
- Administer project funding and ensure compliance

Products

List of awards for grant funding

Staffing

RPCGB

Timeline for Proposed Work

Ongoing activities throughout the fiscal year

Financial Responsibility

FHWA PL and FTA 5303 planning funds have been consolidated into one PL category

| | |
|----------|-----------------|
| Total | <u>\$95,000</u> |
| FTA 5310 | \$95,000 |
| Local | \$0 |

5.4 Active Transportation Planning

Objectives

To support regional connectivity and active transportation networks utilizing multimodal streets, greenways, parks, and other public greenspace by establishing short-term and long-term implementation strategies that address the federal Livability Principles.

Previous Work

- Updated B-ACTIVE website to reflect new trails and bike facilities within the region
- Created and published the 2020 second Annual State of the Network Report
- Updated and maintained a GIS database of all federally funded bicycle and pedestrian facilities (existing and funded/proposed)
- Coordinated with Freshwater Land Trust to implement Red Rock Ridge and Valley Trail System in area plans
- Utilized Strava data to map the most popular routes in the region
- Coordinated with and provided data to the City of Birmingham for bike and pedestrian projects
- Utilized Miovision for bike/ped counts to identify corridors with high activity
- Assisted Jefferson County in reviewing scope of work for countywide Bike and Pedestrian Plan
- Gave presentations to local municipalities on the B-ACTIVE plan and how it can be implemented
- Provided technical assistance and data to consultant for countywide Bike and Pedestrian Plan
- Provided active transportation data and mapping assistance to local municipalities
- Assist the City of Birmingham in determining potential locations for micromobility corrals

Proposed Work

- General Bicycle/Pedestrian Planning - respond to requests from member governments for assistance in planning bicycle and pedestrian facilities. Encourage cities to select projects from the B-Active Plan, the Red Rock Ridge and Valley Trail System or other local bike/ped plans when submitting projects for the Transportation Alternative Program (TAP) or CMAQ funding.
- Continue to maintain the GIS database of federally funded pedestrian and bicycle facilities
- Birmingham Regional Active Transportation Plan (B-Active Plan) – Publish the Annual State of the Network Report; promote, support, and assist with implementation of the Plan
- Utilize Strava data to identify high use bicycle corridors
- Utilize the Miovision camera to collect bike/ped counts at various locations
- Local Planning Assistance – Regular coordination with nonprofit and advocacy groups to assist with the planning and development of trails, on-street bike facilities, and sidewalks
 - Encourage cities to adopt Complete Streets policies and ordinances
 - Assist municipalities with development of their own active transportation plans and facilities
- Education and Outreach Activities – Support ongoing programmatic activities and assist with outreach efforts. Coordinate regional events for Bike/Walk-to-Work Day and provide support to CommuteSmart Birmingham.
- Safety — Collect and analyze safety data for trends and develop options to mitigate concerns

Products

- GIS database and maps illustrating bicycle and/or pedestrian projects
- Birmingham Regional Active Transportation Plan – Annual State of the Network Report
- Bike/ped traffic counts (Miovision)

- B-Active Plan and Red Rock Ridge and Valley Trail System GIS shapefiles and maps for municipalities to use in implementation efforts
- Documentation of annual Bike/Walk-to-Work Day events
- Education events, presentations, workshops, outreach, and webpage development

Staffing

RPCGB, direct contract labor and/or third-party contractors for activities, and organizations

Timeline for Proposed Work

Ongoing activities throughout the fiscal year

Financial Responsibility

FHWA PL and FTA 5303 planning funds have been consolidated into one PL category

| | |
|-------|-----------------|
| Total | <u>\$43,750</u> |
| PL | \$35,000 |
| Local | \$8,750 |

5.5 Logistics Systems Planning

Objectives

To develop a regional intermodal goods movement transportation strategy that will identify improvement for freight movements and address the federal Livability Principles.

Previous Work

- Created 4-page executive summary brochure that overviews the Birmingham Regional Freight Plan
- Coordinated with ALDOT to fulfill elements of Statewide Freight Plan and Freight Plan for the Birmingham Region
- Conducted stakeholder outreach and continued Freight Transportation Advisory Committee (FTAC)
- Adopted the ALDOT targets for freight-related performance measures for Truck Travel Time Reliability Index and congestion at truck freight bottlenecks
- Supported Tennessee DOT's Freight and Goods Movement and Truck Parking Study in the Chattanooga region
- Coordinated with ALDOT on setting goals, objectives, performance measures, and targets, as required by the FAST Act

Proposed Work

- Continuing coordination with ALDOT to fulfill the elements of Statewide Freight Plan and the Freight Plan for the Birmingham Region
- Stakeholder outreach and continuation of the FTAC
- Continuing support for TDOT's Freight and Goods Movement and Truck Parking Study in the Chattanooga Region. Find recommendations that can be applied to the Birmingham MPO area.
- Conduct studies with MPO partners along freight corridors to identify potential infrastructure improvements
- Coordinate with economic development partners to identify land suitable for industrial park development

Products

- Performance Measures
- Stakeholder Outreach and continuation of the Freight Advisory Committee
- Implementation of the recommendations in the Regional Freight Plan
- Data collection related to the Freight and Goods Movement and Truck Parking Study in Chattanooga, TN
- Data updates

Staffing

RPCGB, direct contract labor and/or third-party contractors for activities, and organizations

Timeline for Proposed Work

Ongoing activities throughout the fiscal year

Financial Responsibility

FHWA PL and FTA 5303 planning funds have been consolidated into one PL category

| | |
|-------|-----------------|
| Total | <u>\$28,125</u> |
| PL | \$22,500 |
| Local | \$5,625 |

5.6 Transportation System Performance Management and Monitoring

Objectives

To identify and/or develop appropriate measures to monitor the performance of the transportation system in accordance with the RTP goals and objectives, the Congestion Management Process (CMP), federal and state performance targets, and supporting/complementary planning functions; i.e., economic development or land use.

Previous Work

- Coordinate and manage CMP Committee
- Managed UAB contract
- Developed scope and tasks for interns
- Data monthly summary reports
- Bottleneck summary reports
- Initiated US-31 Traffic Operations Pelham/Alabaster Study

RPCGB coordinated with ALDOT on setting goals, objectives, performance measures, and targets, as required by the FAST Act concerning operations in the planning area.

Proposed Work

The CMP enables the Birmingham Metropolitan Planning Organization to comply with federal regulations for Transportation Management Areas having populations of 200,000 or more. It empowers the RPCGB, acting as the Birmingham MPO, to identify and/or develop performance metrics on which to monitoring and compare congested conditions year after year. The information gathered is also used to inform the transportation decision-making process.

Transportation System Performance Monitoring and Reporting - Building from previous work and following the guidance of the U.S. Department of Transportation, the Birmingham MPO will continue to identify performance measures including analyzing and summarizing HERE data. This will include an expansion of the ongoing coordination with ALDOT and their efforts with this work. The MPO will also endeavor to improve transportation system resiliency and reliability.

Trail Count Program - conduct bicycle and pedestrian counts along both regional and local off-road trails and on-street bicycle facilities. Data will be downloaded, tabulated, and assessed to evaluate usage and demand characteristics.

BJCTA will collect, maintain, and report on transit performance indicators to include metrics to support performance measures for use in benchmarking the system's performance and informing both the MPO's and BJCTA's decision-making process.

Products

- Update goals, objectives, performance measures, and targets that will be used to monitor the transportation system throughout the region
- Data monthly summary reports
- Bottleneck summary reports
- Data processing for MioVision
- US-31 Traffic Operations Pelham/Alabaster Report

Staffing

RPCGB, direct contract labor and/or third-party contractors for activities and organizations

Financial Responsibility

FHWA PL and FTA 5303 planning funds have been consolidated into one PL category

| | |
|-------|------------------|
| Total | <u>\$515,625</u> |
| PL | \$112,500 |
| STPBH | \$300,000 |
| Local | \$103,125 |

5.7 Transportation Safety Planning

Objectives

To incorporate transportation safety into the planning process and improve transportation safety in the community. To support ALDOT's efforts to improve safety on the transportation system for motorized and non-motorized users.

Previous Work

- Presented ALDOT's Safety Performance Targets to the MPO and ensured they were formally adopted
- Coordinated with ALDOT on setting goals, objectives, performance measures, and targets, as required by the FAST Act, concerning safety in the MPA
- Attended Safety Planning Workshop hosted by ALDOT
- Expanded the education and outreach efforts of the Translational Research for Injury Prevention (TRIP) Laboratory at the University of Alabama at Birmingham (Dr. Despina Stavrinos, Assistant Professor of Psychology). The TRIP Lab will further educate young drivers about the consequences of distracted driving.
- Coordinated with ALDOT on setting goals, objectives, performance measures, and targets, as required by the FAST Act, concerning safety in the MPA
- Initiated four different Safety Studies in four different municipalities in the region.

Proposed Work

- Present ALDOT's Safety Performance Targets to the MPO and ensure they are formally adopted
- Continue to support pedestrian and bicycle safety outreach campaigns, to include Public Service Announcements to educate non-motorists and motorists about behaviors impacting traveler safety
- Monitor the federal rulemaking on performance measures for safety
- Continue to expand the education and outreach efforts of the Translational Research for Injury Prevention (TRIP) Laboratory at the University of Alabama at Birmingham (Dr. Despina Stavrinos, Assistant Professor of Psychology). The TRIP Lab will further educate young drivers about the consequences of distracted driving
- Coordinate with ALDOT on setting goals, objectives, performance measures, and targets required by the FAST Act for inclusion in the RTP, TIP, and other necessary documentation required by ALDOT
- Establish method and funding for local municipalities to perform safety studies (see APPLE Program).
- Complete four different Safety Studies in four different municipalities in the region.

Products

- Set goals, objectives, performance measures, and targets; identify high accident locations; develop maps and reports concerning safety issues; and evaluate traffic, freight, bicycle, and pedestrian movements
- Progress reports from Translational Research for Injury Prevention (TRIP) Laboratory
- Safety Study reports

Staffing

RPCGB, direct contract labor and/or third-party contractors for activities, and organizations

Timeline for Proposed Work

Ongoing activities throughout the fiscal year

Financial Responsibility

FHWA PL and FTA 5303 planning funds have been consolidated into one PL category

| | |
|-------|------------------|
| Total | <u>\$106,250</u> |
| PL | \$85,000 |
| Local | \$21,250 |

5.8 Technical Assistance for Local Communities and Agencies

Objectives

To provide technical assistance, and/or support to local entities (governmental and non-governmental), and the public for any planning-related issues and requests that are either too small in scope or too short-lived to rise to the level of requiring a formal scope and budget.

To account for staff time spent addressing technical assistance and support requests as described above may include:

- Staff time to participate in technical review committees and task forces
- Developing monthly progress and budgetary reports
- Technical quality control
- Minor mapping updates
- Data/document request fulfillment
- Local government planning and zoning opinions

Previous Work

- Meeting attendance
- Assistance to local governments
- Data mining and report processing
- Document printing and delivery
- Printing maps
- Meeting facilitation/organization
- Local government planning and mapping assistance

Proposed Work

The RPCGB will assist local governments, small project sponsors, and non-governmental organizations by providing general planning support and technical assistance on an as-requested basis, and when financially and technically feasible. This includes:

- Attending City Council, local Planning Commission, neighborhood association, and other community and/or organizational meetings as requested
- Providing comments/input to reports, correspondence, and discussions on transportation related topics on specific transportation issues or items
- Local government planning and mapping assistance
- Data assistance

Products

- Assistance with project management and implementation as necessary
- Analyses, mapping, and planning assistance as requested
- Reports and memoranda related to local assistance as required.
- Attendance at meetings as requested.
- Attendance, if available, at workshops, conferences, and training to improve efficiency and skills under this work program task

Staffing

RPCGB

Timeline for Proposed Work

Ongoing activities throughout the fiscal year

Financial Responsibility

FHWA PL and FTA 5303 planning funds have been consolidated into one PL category

| | |
|-------|-----------|
| Total | \$112,500 |
| PL | \$90,000 |
| Local | \$22,500 |

TASK 6.0: PROGRAMS and TECHNICAL ASSISTANCE

6.1 CommuteSmart Program (Rideshare)

Objectives

To improve air quality and reduce traffic congestion by working with individuals and employers to reduce the number of drive-alone commutes.

Previous Work

Ongoing activities have been conducted for employer-based outreach programs, vanpool operations services, and park-and-ride lot development. An annual report documenting accomplishments was prepared and printed.

Proposed Work

- Outreach and Marketing Activities - Designed to increase the number of employers who encourage use of commuting alternatives and the number of participants in the program
- Turn-Key Vanpool Operations Services
- Study the establishment of a regional bikeshare cooperative

Products

- Document emissions reduction estimates – March 2021
- Outreach and marketing of vanpool and rideshare programs - Ongoing
- Customer service support to program participants - Ongoing
- Commuter incentive programs such as GetGreen and CommuterClub - Ongoing
- Partner with companies with 150 or more employees - Ongoing
- Annual Report – March 2021

Staffing

RPCGB, direct contract labor and/or third-party contractors for activities, and other organizations

Timeline for Proposed Work

- Document emissions reduction estimates – March 2021
- Annual Report – March 2021

Financial Responsibility

| | |
|-------|--------------------|
| Total | <u>\$1,200,000</u> |
| STPBH | \$1,200,000 |
| Local | \$0 |

6.2 Building Communities Program

Objectives

To provide grants to local communities within the Birmingham MPA for projects, strategies, and services that support the Scope of the Planning Factors and meet the federal Livability Principles, including transportation and land use integration, economic vitality, safety and security, accessibility and mobility, environmental/air quality, and system preservation.

Previous Work

The following projects were completed in FY 2020:

- City of Homewood Central Business District Zoning Update
- City of Pelham Zoning Updates
- Birmingham City Center Master Plan
- City of Birmingham Built Environment and Health Extension Project (for 79 of the 99 City of Birmingham Neighborhoods)
- City of Montevallo Comprehensive Plan
- City of Chelsea Comprehensive Plan

Proposed Work

A negotiated process between the RPCGB and MPO governments is used to develop Building Communities projects consistent with eligible transportation and land use activities. Land use and transportation needs are identified, a determination is made for consistency with Building Communities' goals, a project scope of work and budget are developed, and a cost sharing agreement is made. The MPO will document projects in the semi-annual report.

Projects currently in progress in FY 2020 and scheduled to be completed in FY 2021 include:

- City of Birmingham Northside Southside Framework Plan
- City of Pelham Mixed-Use Zoning Districts
- City of Birmingham Southern Area Framework Plan
- City of Calera Comprehensive Plan
- City of Calera State Route 25 Corridor Overlay District

Projects anticipated to begin in FY 2021 and be completed during FY 2021 or FY 2022:

- City of Birmingham Bus Rapid Transit Station Area Development Study

Products

Plans and programs suitable for implementation

Staffing

RPCGB, direct contract labor and/or third-party contractors for activities, and organizations

Timeline for Proposed Work

Ongoing activities throughout the fiscal year

Financial Responsibility

| | |
|-------|------------------|
| Total | <u>\$812,500</u> |
| STPBH | \$650,000 |
| Local | \$162,500 |

6.3 Federal Transit Administration 5310 Grant Program

Objectives

To competitively award grant funding for capital equipment for the purpose of improving mobility for seniors and individuals with disabilities. Administer and distribute federally allocated funding and ensure subrecipients' compliance with regulations. Oversee and assist with procurement of capital over the amount of \$2,000.

Previous Work

In the past, BJCTA has administered the distribution of funding and compliance. RPCGB was responsible for the application process and some procurement.

Proposed Work

- Draft and release a request for projects
- Assemble a committee to review requests and develop a list of recommendations
- Present recommendations to MPO for approval
- Ensure projects are included in the TIP and STIP
- Contract with subrecipients and oversee procurement
- Administer project funding and ensure compliance

Products

List of awards for grant funding

Staffing

RPCGB

Timeline for Proposed Work

Ongoing activities throughout the fiscal year

Financial Responsibility

FHWA PL and FTA 5303 planning funds have been consolidated into one PL category

| | |
|----------|--------------------|
| Total | <u>\$1,422,009</u> |
| FTA 5310 | \$1,422,009 |
| Local | \$0 |

TASK 7.0: ADA

7.1 Compliance

Objectives

The RPCGB, on behalf of the Birmingham Metropolitan Planning Organization (MPO), will continue to provide technical assistance to various cities and counties within the MPA to perform ADA Self Evaluations, ADA Transition, or ADA Access Plans in accordance with the Americans with Disabilities Act of 1990 and Section 504 of the Rehabilitation Act of 1973.

Previous Work

- Documented the status of the municipalities and ADA Coordinators on a tracking table
- Assisted municipalities with their Self Evaluations, Transition Plans, or Access Plans (only assistance will be provided; no plan development)
- Performed field reviews as necessary to provide research and recommendations the municipalities
- Drafted ADA Plan for MPO

Proposed Work

- Continue to document the status of the municipalities and ADA Coordinators on tracking table
- Continue to make recommendations for those municipalities that do not have a Self-Evaluation or Transition Plan
- Continue to assist municipalities with their Self Evaluations, Transition Plans, or Access Plans (only assistance will be provided; no plan development)
- Continue to perform field reviews as necessary to provide research and recommendations
- Coordinate with ALDOT and FHWA on ADA efforts

Products

- ADA Tracking Table including status

Staffing

RPCGB, direct contract labor, and/or third-party contractors for activities, and organizations

Timeline for Proposed Work

Ongoing activities throughout the fiscal year

Financial Responsibility

FHWA PL and FTA 5303 planning funds have been consolidated into one PL category

| | |
|-------|-----------------|
| Total | <u>\$18,750</u> |
| PL | \$15,000 |
| Local | \$3,750 |

APPENDICES

LIST OF ACRONYMS

| | |
|------------|---|
| ADEM | Alabama Department of Environmental Management |
| ALDOT | Alabama Department of Transportation |
| APCA | Alabama Partners for Clean Air |
| BJCTA | Birmingham Jefferson County Transit Authority |
| CMAQ | Congestion Mitigation Air Quality |
| CPG | FHWA and FTA Consolidation of Planning Fund |
| CTP | Comprehensive Transportation Plan |
| EPA | Environmental Protection Agency |
| FAST Act | Fixing America's Surface Transportation Act |
| FHWA | Federal Highway Administration |
| FTA | Federal Transit Administration |
| GHG | Greenhouse Gases |
| GIS | Geographic Information System |
| HSCTP | Human Services Coordinated Transportation Plan |
| IAC | Interagency Consultation |
| JCDH | Jefferson County Department of Health |
| LAP | Language Assistance Plan |
| LEP | Limited English Proficiency |
| L RTP | Long Range Transportation Plan |
| MAP-21 | Moving Ahead for Progress in the 21 st Century Act |
| MOVES2014a | Motor Vehicle Emissions Simulator |
| MPA | Metropolitan Planning Area |
| MPO | Metropolitan Planning Organization |
| NEPA | National Environmental Policy Act of 1969 |
| PL | Federal Highway Administration Planning Funds |
| RTP | Regional Transportation Plan |
| SLS | State or Local Share |
| SRTS | Safe Routes to School |
| STIP | State Transportation Improvement Program |
| STP | Surface Transportation Program |
| STPBH | Surface Transportation Program for Birmingham |
| TAP | Transportation Alternatives Program |
| TAZ | Traffic Analysis Zones |
| TIP | Transportation Improvement Program |
| USDOT | U.S. Department of Transportation |
| VMT | Vehicle Miles Traveled |

**TABLE 1
UNIFIED PLANNING WORK PROGRAM
FY 2021
(Organizational Responsibility)
Federal Dollars Only**

| TASKS | PL-FHWA/FTA | RPC | STATE PLANNING AND RESEARCH FUNDING (SPR) | FTA 5310 | CONTRACTOR | TOTAL FEDERAL | |
|---|-------------|-----------|---|----------|--|---|----------|
| 1.0 ADMINISTRATION | | | | | | | |
| 1.1 MPO Administration | \$224,328 | \$224,328 | | | | \$224,328 | |
| 1.2 Unified Planning Work Program | \$18,000 | \$18,000 | | | | \$18,000 | |
| 1.3 Capital and Operating Purchases | \$74,532 | | | | \$500 3D Analyst \$8,000 Adobe Creative Cloud \$9,900 ArcEditor CU/SU \$5,000 ArcGIS Online/ArcGIS Pro \$3,000 ArcInfo CU \$5,000 ArcServer Enterprise \$2,700 ArcView CU \$700 ArcView SU \$1,400 CommunityViz \$3,500 Equipment for Planning \$1,000 ESRI Community Analyst \$8,000 InfoGroup \$2,500 LRS Data Acquisitions \$30,000 Aerial Imagery, LIDAR, & Data \$1,100 Maxwell Render Full Suite \$3,000 MicroVision Data Processing \$500 Network Analyst \$1,100 SketchUp Pro \$5,000 Southern Exposure Information \$500 Spatial Analyst \$500 Woods and Poole \$265 X Tools Pro \$74,532 (Total x 8) | 2.3 2.2 2.3 2.3 2.3 2.3 2.3 2.3 2.2 2.3 2.3 2.1 2.2 2.3 6.2 5.6 2.3 6.2 2.2 2.3 2.2 2.2 2.3 | \$74,532 |
| 1.4 Education and Training | \$70,000 | \$70,000 | | | | \$70,000 | |
| 2.0 PLANNING INFORMATION | | | | | | | |
| 2.1 Data Collection and Management | \$40,000 | \$10,000 | | | \$30,000 Third Party Contractor | \$40,000 | |
| 2.2 Data Analysis and Forecasting | \$30,000 | \$30,000 | | | | \$30,000 | |
| 2.3 Geographic Information Systems | \$65,000 | \$65,000 | | | \$20,000 Third Party Contractor | \$85,000 | |
| 2.4 Model Development Program | \$140,000 | \$60,000 | | | \$80,000 Third Party Contractor | \$140,000 | |
| 3.0 PUBLIC INVOLVEMENT | | | | | | | |
| 3.1 Public Involvement and Outreach | \$30,000 | \$15,000 | | | \$15,000 Technical workshops; topics to be determined | \$30,000 | |
| 4.0 ENVIRONMENTAL PROCESS PLANNING | | | | | | | |
| 4.1 Air Quality Planning | | \$100,000 | | | \$550,000 Alabama Partners for Clean Air | \$650,000 | |
| 4.2 Environmental Consultation Process | \$1,800 | \$1,800 | | | | \$1,800 | |
| 4.3 Advanced Planning, Programming, and Logical Engineering (APPLE) | | \$25,000 | | | \$375,000 Third Party Contractor | \$400,000 | |
| 4.4 Climate Change | \$2,500 | \$2,500 | | | | \$2,500 | |
| 5.0 TRANSPORTATION SYSTEMS | | | | | | | |

TABLE 1
UNIFIED PLANNING WORK PROGRAM
FY 2021
(Organizational Responsibility)
Federal Dollars Only

| TASKS | PL-FHWA/FTA | RPC | STATE PLANNING AND RESEARCH FUNDING (SPR) | FTA 5310 | CONTRACTOR | TOTAL FEDERAL |
|---|--------------------|--------------------|---|-----------------|---|--------------------|
| 5.1 Regional Transportation Plan | \$50,000 | \$50,000 | | | | \$50,000 |
| 5.1.1 Air Quality Conformity Analysis and Reporting | \$28,000 | \$28,000 | | | | \$28,000 |
| 5.1.2 Regional Transportation Plan Project Listing for Air Quality Conformity | \$1,700 | \$1,700 | | | | \$1,700 |
| 5.2 Transportation Improvement Program (TIP) | \$133,000 | \$133,000 | | | | \$133,000 |
| 5.2.1 Amend TIP Project Listings for Air Quality Conformity | \$2,000 | \$2,000 | | | | \$2,000 |
| 5.3 Public Transportation Planning | \$32,400 | \$32,400 | | \$95,000 | | \$32,400 |
| 5.3.1 Federal Transit Administration 5310 Grant | | | | \$95,000 | | \$95,000 |
| 5.4 Active Transportation Planning | \$35,000 | \$35,000 | | | | \$35,000 |
| 5.5 Logistics Systems Planning | \$22,500 | \$22,500 | | | | \$22,500 |
| 5.6 Transportation System Performance Management and Monitoring | \$112,500 | \$32,500 | | | \$380,000 Third Party Contractor | \$412,500 |
| 5.7 Transportation Safety and Security Planning | \$85,000 | \$5,000 | | | \$80,000 Third Party Contractor | \$85,000 |
| 5.8 Technical Assistance for Local Communities and Agencies | \$90,000 | \$30,000 | | | \$60,000 Third Party Contractor | \$90,000 |
| 6.0 PROGRAMS AND TECHNICAL ASSISTANCE | | | | | | |
| 6.1 CommuteSmart Program (Rideshare) | | \$585,000 | | | \$400,000 Enterprise \$150,000 Marketing/Media | \$1,200,000 |
| 6.2 Building Communities Program | | \$650,000 | | | \$65,000 Third party contractor | \$650,000 |
| 7.0 ADA COMPLIANCE | | | | | | |
| 7.1 ADA Compliance | \$15,000 | \$6,000 | | | \$9,000 Third party contractor | \$15,000 |
| STATE PLANNING AND RESEARCH FUNDING (SPR) | | | | | | |
| | | | \$108,000 | | | \$108,000 |
| TOTALS | \$1,303,260 | \$2,234,728 | \$108,000 | \$95,000 | \$2,288,532 | \$4,726,260 |

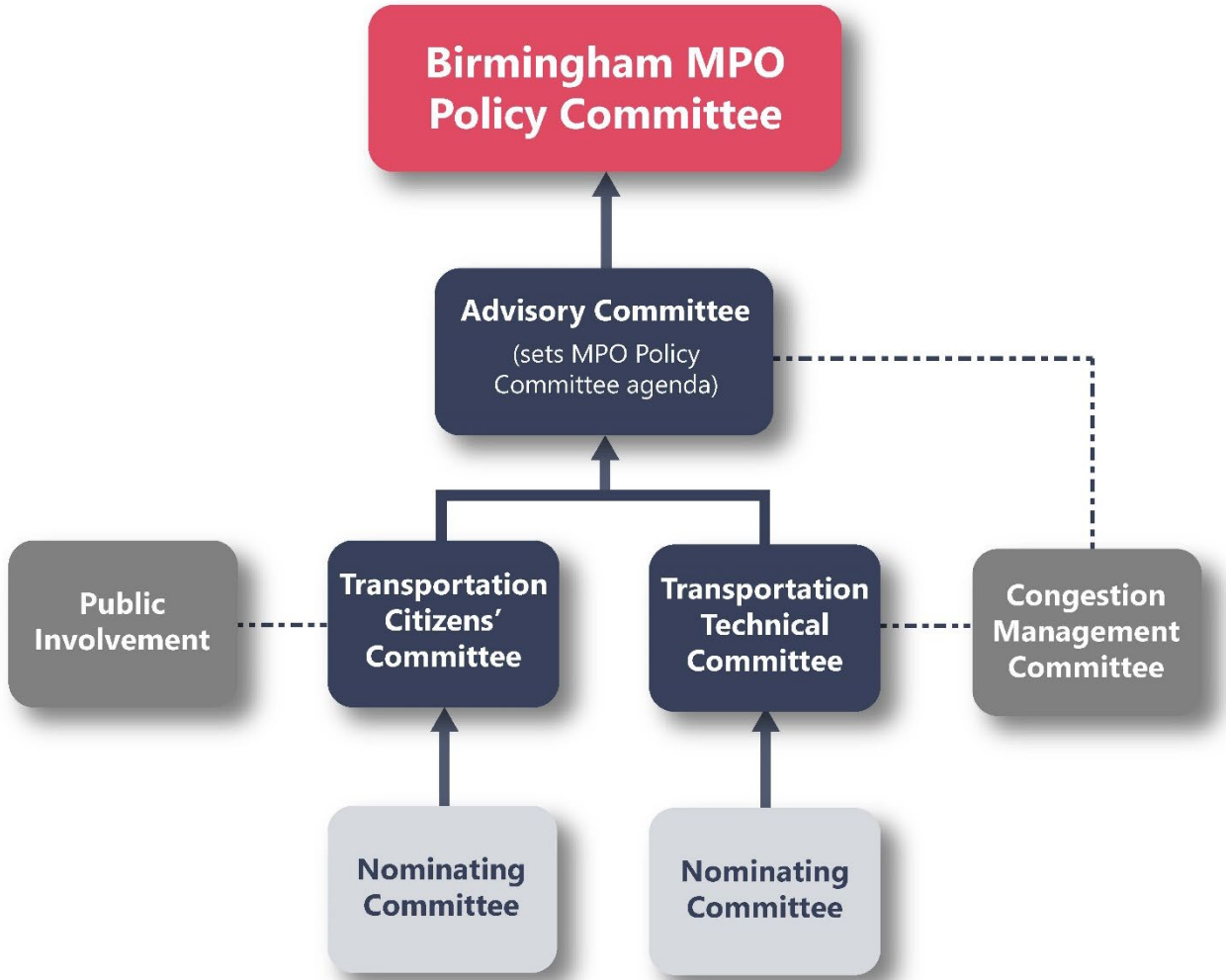
PL = \$953,260 (annual FY 2021 mark) + \$350,000 projected carryover from FY 2020 = \$1,303,260
FHWA PL and FTA 5303 planning funds have been consolidated into the PL-FWA/FTA category

**TABLE 2
UNIFIED PLANNING WORK PROGRAM
FY 2021
(Funding Sources)**

| TASKS | PL-FHWA/FTA:SL | STP:SL | FTA 5310:SL | CMAQ: SL | ALDOT SUPPORT:SL | TOTAL FEDERAL:SL |
|---|--------------------|------------------|-----------------|------------------|------------------|--------------------|
| 1.0 ADMINISTRATION | | | | | | |
| 1.1 MPO Administration | \$224,328 | \$56,082 | | | | \$224,328 |
| 1.2 Unified Planning Work Program | \$18,000 | \$4,500 | | | | \$18,000 |
| 1.3 Capital and Operating Purchases | \$74,532 | \$18,633 | | | | \$74,532 |
| 1.4 Education and Training | \$70,000 | \$17,500 | | | | \$70,000 |
| 2.0 PLANNING INFORMATION | | | | | | |
| 2.1 Data Collection and Management (\$30,000)** | \$40,000 | \$10,000 | | | | \$40,000 |
| 2.2 Data Analysis and Forecasting | \$30,000 | \$7,500 | | | | \$30,000 |
| 2.3 Geographic Information Systems (\$20,000**) | \$65,000 | \$16,250 | \$5,000 | | | \$85,000 |
| 2.4 Model Development Program (\$80,000**) | \$140,000 | \$35,000 | | | | \$140,000 |
| 3.0 PUBLIC INVOLVEMENT | | | | | | |
| 3.1 Public Involvement and Outreach | \$30,000 | \$7,500 | | | | \$30,000 |
| 4.0 ENVIRONMENTAL PROCESS PLANNING | | | | | | |
| 4.1 Air Quality Planning | | | | \$650,000 | \$162,500 | \$650,000 |
| 4.2 Environmental Consultation Process | \$1,800 | \$450 | | | | \$1,800 |
| 4.3 Advanced Planning, Programming, and Logical Engineering (APPLE) | | \$400,000 | \$100,000 | | | \$400,000 |
| 4.4 Climate Change | \$2,500 | \$625 | | | | \$2,500 |
| 5.0 TRANSPORTATION SYSTEMS | | | | | | |
| 5.1 Regional Transportation Plan | \$50,000 | \$12,500 | | | | \$50,000 |
| 5.1.1 Air Quality Conformity Analysis and Reporting | \$28,000 | \$7,000 | | | | \$28,000 |
| 5.1.2 Regional Transportation Plan Project Listing for Air Quality Conformity | \$1,700 | \$425 | | | | \$1,700 |
| 5.2 Transportation Improvement Program (TIP) | \$133,000 | \$33,250 | | | | \$133,000 |
| 5.2.1 Amend TIP Project Listings for Air Quality Conformity | \$2,000 | \$500 | | | | \$2,000 |
| 5.3 Public Transportation Planning | \$32,400 | \$8,100 | | | | \$32,400 |
| 5.3.1 Federal Transit Administration Section 5310 Grant | | | \$95,000 | | | \$95,000 |
| 5.4 Active Transportation Planning | \$35,000 | \$8,750 | | | | \$35,000 |
| 5.5 Logistics Systems Planning | \$22,500 | \$5,625 | | | | \$22,500 |
| 5.6 Transportation System Performance Management and Monitoring (\$80,000**) | \$112,500 | \$28,125 | \$300,000 | \$75,000 | | \$412,500 |
| 5.7 Transportation Safety and Security Planning (\$80,000**) | \$85,000 | \$21,250 | | | | \$85,000 |
| 5.8 Technical Assistance for Local Communities and Agencies (\$60,000**) | \$90,000 | \$22,500 | | | | \$90,000 |
| 6.0 PROGRAMS AND TECHNICAL ASSISTANCE | | | | | | |
| 6.1 CommuteSmart Program (Rideshare) | | \$1,200,000 | \$0 | | | \$1,200,000 |
| 6.2 Building Communities Program | | \$650,000 | \$162,500 | | | \$650,000 |
| 7.0 ADA COMPLIANCE | | | | | | |
| 7.1 ADA Compliance | \$15,000 | \$3,750 | | | | \$15,000 |
| STATE PLANNING AND RESEARCH FUNDING (SPR) | | | | | | |
| | | | \$108,000 | | \$27,000 | \$108,000 |
| TOTALS | \$1,303,260 | \$325,815 | \$95,000 | \$650,000 | \$108,000 | \$4,726,260 |

PL = \$953,260 (annual FY 2021 mark) + \$350,000 projected carryover from FY 2020= \$1,303,260
 ** Indicates carryover funding by task from FY 2020. All carryover is for contracts with consultants from FY 2020
 FHWA PL and FTA 5303 planning funds have been consolidated into the PL-FHWA/FTA category
 MPOs may carry over funds for 3 years. The oldest unexpended funds will be returned to the funding pool for reallocation.

STRUCTURE OF THE BIRMINGHAM MPO



The staff of the Regional Planning Commission of Greater Birmingham also serves as staff to the Birmingham MPO.

- Decision Makers
- Voting Committees
- Formal Subcommittees
- Ad Hoc Advisory Committees
- Formal Connections
- Ad Hoc Connections

METROPOLITAN PLANNING AREA/TRANSPORATION MANAGEMENT AREA MAP

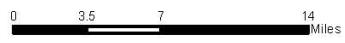
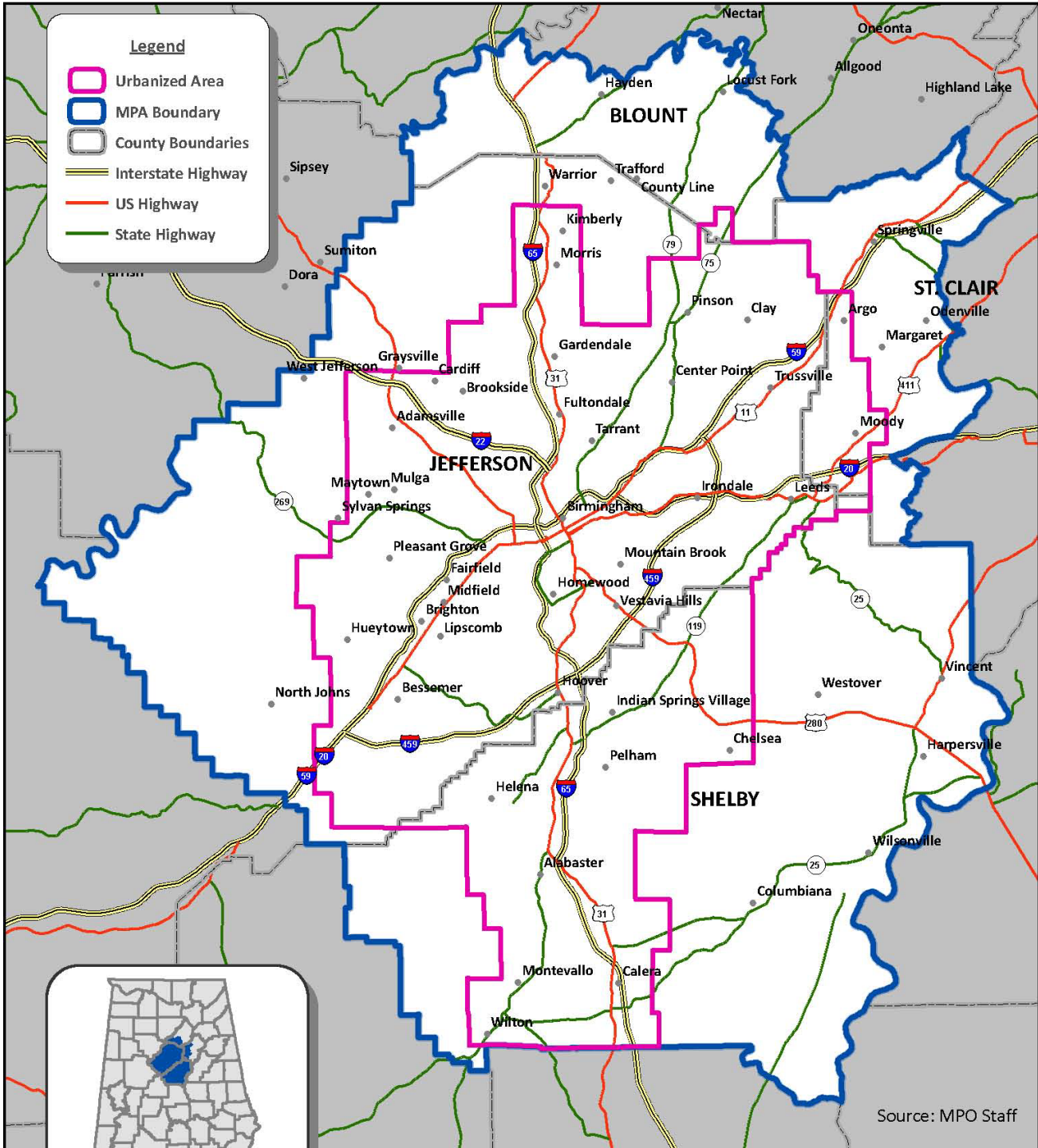
BIRMINGHAM MPO AREA

METROPOLITAN PLANNING AREA AND URBANIZED AREA BOUNDARY



Legend

- Urbanized Area
- MPA Boundary
- County Boundaries
- Interstate Highway
- US Highway
- State Highway



*Based on 2010 Census data.
May, 2013 - G:\ProjectData\MPO\MPA
2010MPA0411.mxd

Source: MPO Staff

PLANNING FACTORS

1. Support the economic vitality of the metropolitan area, especially by enabling global competitiveness, productivity, and efficiency
2. Increase the safety of the transportation system for motorized and nonmotorized users
3. Increase the security of the transportation system for motorized and nonmotorized users
4. Increase accessibility and mobility of people and freight
5. Protect and enhance the environment, promote energy conservation, improve the quality of life, and promote consistency between transportation improvements and state and local planned growth and economic development patterns
6. Enhance the integration and connectivity of the transportation system across and between modes for people and freight
7. Promote efficient system management and operation
8. Emphasize the preservation of the existing transportation system
9. Improve the resiliency and reliability of the transportation system and reduce or mitigate storm-water impacts of surface transportation
10. Enhance travel and tourism

LIVABILITY INDICATORS

1. Provide more transportation choices

Develop safe, reliable, and economical transportation choices to decrease household transportation costs, reduce our nation's dependence on foreign oil, improve air quality, reduce greenhouse gas emissions, and promote public health.

Performance Indicator: **Mode Share**

2. Promote equitable, affordable housing

Expand location- and energy-efficient housing choices for people of all ages, incomes, races, and ethnicities to increase mobility and lower the combined cost of housing and transportation.

Performance Indicator: **Jobs/Housing Balance**

3. Enhance economic competitiveness

Improve economic competitiveness through reliable and timely access to employment centers, educational opportunities, services, and other basic needs by workers, as well as expanded business access to markets.

Performance Indicator: **Travel Time Index**

4. Support existing communities

Target federal funding toward existing communities—through strategies like transit-oriented, mixed-use development and land recycling—to increase community revitalization and the efficiency of public works investments and to safeguard rural landscapes.

Performance Indicator: **Percentage of Projects that Include Air Quality Mitigation**

5. Coordinate and leverage federal policies and investment

Align federal policies and funding to remove barriers to collaboration, leverage funding, and increase the accountability and effectiveness of all levels of government to plan for future growth, including making smart energy choices such as locally generated renewable energy.

Performance Indicator: **Project Funding Diversity**

6. Value communities and neighborhoods

Enhance the unique characteristics of all communities by investing in healthy, safe, and walkable neighborhoods—rural, urban, or suburban.

Performance Indicator: **Partnerships and Public Involvement**

CURRENT AND POTENTIAL PLANNING STUDIES

Completed and Ongoing Studies since October 2014 (sorted by sponsor then by title)

| Sponsor | Title |
|------------------|--|
| ALDOT | Lakeshore Extension - completed April 2020 |
| Alabaster | Alabaster Comprehensive Plan - completed March 2016 |
| Alabaster | State Route 119 Overlay District and Design Guidelines - completed March 2017 |
| Argo | Argo Traffic Study - completed April 2018 |
| Birmingham | 20th Street Pedestrian Mall - completed January 2018 |
| Birmingham | Avenue F Bridge Study - completed November 2019 |
| Birmingham | Birmingham City Center Master Plan - completed March 2020 |
| Birmingham | Built Environmental & Health Project (SHAPE BHAM) - completed November 2017 |
| Birmingham | Built Environment and Health Expansion Project (SHAPE BHAM EXPANSION PROJECT) - completed Dec 2019 |
| Birmingham | Crestwood Blvd Corridor Study - ongoing |
| Birmingham | Eastern Area Framework Plan - completed August 2018 |
| Birmingham | Grants Mill Road Extension Study - ongoing |
| Birmingham | Citywide Transportaton Plan - ongoing |
| Birmingham | North Birmingham Framework Plan - March 2015 |
| Birmingham | Northeastern Area Framework Plan - completed July 2017 |
| Birmingham | Northside / Southside Framework Plan - ongoing |
| Birmingham | Pavement Management Plan - ongoing |
| Birmingham | Pratt - Ensley Framework Plan - completed September 2018 |
| Birmingham | Southern Area Framework Plan - ongoing |
| Birmingham | Southwest Area Framework Plan - completed July 2017 |
| Birmingham | Titusville Framework Plan - completed February 2015 |
| Birmingham | Western Area Framework Plan - completed May 2015 |
| Birmingham | Vulcan Greenway Study - completed March 2018 |
| BJCTA | Commuter Rail Study - completed August 2019 |
| BJCTA | Route Optimization Plan - onging |
| Calera | State Route 25 Relocation Study - completed September 2019 |
| Calera | State Route 25 Corridor Overlay District - ongoing |
| Calera | Calera Comprehensive Plan - ongoing |
| Center Point | Center Point Comprehensive Plan - completed April 2017 |
| Center Point | Zoning Ordinance and Sign Ordinance Updates - completed July 2019 |
| Chelsea | City of Chelsea Highway 280 Overlay District - completed February 2019 |
| Chelsea | Chelsea Comprehensive Plan - completed July 2020 |
| Chelsea | Chesser Drive Study - ongoing |
| Gardendale | Gardendale Comprehensive Plan - completed October 2014 |
| Gardendale | Gardendale New Road Study - completed February 2018 |
| Helena | School Intersections - completed August 2017 |
| Homewood | Downtown Master Plan and Zoning Update - Master Plan completed Oct 2018; zoning ongoing |
| Homewood | Citywide Sign Code Update - completed December 2019 |
| Homewood | Central Avenue Study - completed May 2020 |
| Homewood | Hollywood Blvd/US-280 Intersection Study - completed July 2018 |
| Hoover | Hoover Comprehensive Plan - completed July 2019 |
| Hoover | Bicycle/Pedestrian Plan - completed July 2019 |
| Irondale | Irondale Comprehensive Plan - completed April 2016 |
| Jefferson County | Acton Road Corridor Study - completed May 2017 |
| Jefferson County | Bicycle/Pedestrian Plan - ongoing |
| Jefferson County | Cahaba River Road Study - completed April 2019 |
| Jefferson County | Crosshaven Drive Corridor Study - completed January 2019 |
| Montevallo | Montevallo Comprehensive Plan - ongoing |
| Mountain Brook | Mountain Brook Sidewalks Study - completed August 2017 |

| | |
|---------------------|---|
| Mountain Brook | Mountain Brook Traffic Study - completed August 2018 |
| Mountain Brook | Overton Road Corridor Study - ongoing |
| Pelham | Pelham Comprehensive Plan - completed February 2020 |
| Pelham | Mixed-Use Zoning Districts - ongoing |
| Pelham | New Roads Study - ongoing |
| Pelham | Pelham Greenway - completed April 2016 |
| RPCGB | Active Transportation Plan - completed March 2019 |
| RPCGB | Regional Freight Plan - completed March 2019 |
| RPCGB | US-31 Operations Analysis from Amphitheater Rd. in Pelham to S. Colonial Pkwy. in Alabaster - ongoing |
| RPCGB | Roadway Ownership/Maintenance Study - ongoing |
| RPCGB | Travel Demand Model Enhancement Study - ongoing |
| RPCGB | Safety Study - SR-119/Fulton Springs Road - ongoing |
| Shelby County | Bicycle/Pedestrian Plan - completed 2018 |
| Shelby County | CR-47 Intersection Improvements - completed September 2017 |
| Shelby County | Dunnavant Valley Trail - completed October 2017 |
| Shelby County/Colum | SR-70 Corridor Study - Columbiana - ongoing |
| St. Clair County | Springville Traffic Study - completed December 2018 |
| St. Clair County | US-411 Interchange Study - ongoing |
| Trussville | Chalkville Road/Chalkville Mtn. Rd Corridor Study - ongoing |
| UAB | UAB – North South Streets Study - completed March 2019 |
| UAB | UAB – Road Diets - completed September 2016 |
| Vestavia Hills | Traffic Study - completed July 2019 |

Potential Studies

| Sponsor | Title |
|------------------|--|
| Alabaster | US-31/SR-119/Railroad Crossing Study |
| Bessemer/BJCTA | Transit Station |
| Birmingham | Green Streets |
| Birmingham | 16th Street Study |
| Chelsea | Chesser Drive Study |
| Gardendale | Corridors Overlay District |
| Homewood | Edgewood Study |
| Odenville | Intersection Study |
| Pelham | Zoning Ordinance Updates |
| RPCGB | Intelligent Transportation Systems Inventory |
| RPCGB | Truck Parking Inventory |
| St. Clair County | St. Clair County Railroad Crossing Study |

Statewide Plans (www.dot.state.al.us)

| Sponsor | Title |
|---------|---------------------------------------|
| ALDOT | Alabama Rail Plan |
| ALDOT | Statewide Airport System Plan |
| ALDOT | Statewide Bicycle and Pedestrian Plan |
| ALDOT | Statewide Freight Plan |
| ALDOT | Statewide Management Plan |
| ALDOT | Statewide Transportation Plan |

Note: for more information on any of these studies, contact the project sponsor or the RPCGB