



Unified Planning Work Program

**for the
Birmingham Metropolitan
Planning Organization**

FY 2022

October 2021 – September 2022

This document is posted at
<http://www.rpcgb.org/upwp/>

For further information, please contact
Scott Tillman, Director of Planning and Operations
Regional Planning Commission of Greater Birmingham (RPCGB)
Two 20th Street North, Suite 1200
Birmingham, AL 35203

Email: stillman@RPCGB.org

Adopted: August 11, 2021
Amended: March 9, 2022

Regional Planning Commission of Greater Birmingham

Staff to the MPO

Charles Ball, Executive Director
Scott Tillman, Director of Planning and Operations
Michael Kaczorowski, Principal Planner
Lindsay Puckett, Principal Planner
Harry He, Transportation Engineer
Brett Isom, GIS Manager
Laurel Land, Senior Planner
Maria Hines, Community Planner
Hunter Garrison, Community Planner
Lisa Smith, CommuteSmart/APCA Program Manager

This UPWP was prepared as a cooperative effort of the U.S. Department of Transportation (USDOT), Federal Highway Administration (FHWA), Federal Transit Administration (FTA), Alabama Department of Transportation (ALDOT), and local governments in partial fulfillment of requirements in Title 23 USC 134 and 135, amended by the FAST Act, Sections 1201 and 1202, December 4, 2015. The contents of this document do not necessarily reflect the official views or policies of the U.S. Department of Transportation.

TRANSPORTATION CITIZENS COMMITTEE 2021

Chair: Phillip Wiedmeyer

Vice-Chair: Willie Osborne

Last Name	First Name	Membership District
Bivins	Tyrome	Shelby County
Brown	Anna	City of Birmingham
Dye	Jackie	Shelby County
Ferrell	Butch	City of Birmingham
Giddens	Harry	City of Birmingham
Ludwig	Bruce	South/Southeast Jefferson County
Osborne	Willie	City of Birmingham
Owen	Pittman	City of Birmingham
Parker	Ryan	South/Southeast Jefferson County
Richardson	Robert	Shelby County
Staley	Michael	South/Southeast Jefferson County
Stokes	Sarah	South/Southeast Jefferson County
Wiedmeyer	Phillip	South/Southeast Jefferson County

TRANSPORTATION TECHNICAL COMMITTEE 2021

Chair: Christie Hester
 Vice Chair: Christopher Brady

Last Name	First Name	Representing
Abel	Richard	ClasTran
Bailey	Clark	At-Large
Baldwin	Nan	Birmingham Business Alliance (BBA) (non-voting)
Boozer	Ken	Jefferson County Dept of Roads and Trans
Boyd	Geoffrey	UAB Campus Planning
Brady	Christopher	City of Vestavia Hills
Burgess	Matthew	At-Large
Caudle	Richard	At-Large
Dahlke	Dan	St. Clair County Engineer
Darden	Richard	At-Large
Davis	André	UAB Parking and Transportation Services
Dawkins	Greg	At-Large
Dawson	Aaron	Federal Highway Administration (FHWA) (non-voting)
Gambrel	Tim	City of Birmingham Chief Planner
Gore	Ron	ADEM Air Division Chief (non-voting)
Hale	Doug	Bicycle/Pedestrian
Hall	Alacyia	Traffic Safety
Haynes	Steve	ALDOT Birmingham Area
Hester	Christie	At-Large
Holladay	Scott	Shelby County Highway Dept
Howard	Darrell	At-Large
Jones	Steven	At-Large
Kuyrkendall	Bert	City of Birmingham Transportation
Lacke	Matt	Jefferson County Dept of Health
Lawlor	Elizabeth	Railroad Industry
Leonard	DeJarvis	ALDOT East Central Region
Lindsey	Brad	ALDOT Local Transportation Bureau (non-voting)
Lowe	Greg	At-Large
Murphy	J.T.	At-Large
Peak	Wytangy	BJCTA
Perry	Blair	At-Large
Peterson	Doug	At-Large
Proctor	Sherri	City of Alabaster
Reeves	Chris	City of Hoover
Rogers	Becky	At-Large
Seagle	Doug	At-Large
Smith	Cale	City of Homewood
Spivey	Nicole	Federal Transit Authority (FTA) (non-voting)
Stephenson	Jeff	At-Large
Stewart	Dustin	Blount County Engineer
Strickland	Keith	At-Large
Sullivan	Andrew	At-Large
Tucker	Brett	At-Large
Vermillion	Rob	At-Large
Wieseman	Ben	REV Birmingham
Willingham	David	Shelby County Development Services

MPO POLICY COMMITTEE 2021

Chair: Randy Cole
 Vice Chair: Stan Hogeland
 Secretary: Fred Hawkins

*Advisory Committee Member

Title	Last Name	First Name	Representing
Councilor	Abbott	Valerie	City of Birmingham
Mr.	Al-Dakka*	Jehad	Jefferson County - Hoover
Councilor	Alexander*	Wardine	City of Birmingham
Mr.	Ammons	Steve	Unincorporated Jefferson County
Mr.	Armstrong*	Allen	Blount County Public Transportation
Mr.	Bartlett*	Mark	Federal Highway Administration (non-voting)
Mayor	Brasseale	Jerry	Jefferson County Municipalities - Pleasant Grove
Mayor	Brocato	Frank	Jefferson County Municipalities - Hoover
Ms.	Carter*	Heather	Unincorporated Jefferson County
Mayor	Choat*	Buddy	Jefferson County Municipalities - Trussville
Mr.	Cole*	Randy	Shelby County
Mayor	Curry	Ashley	Jefferson County Municipalities – Vestavia Hills
Mayor	Davis	Julio	Jefferson County Municipalities - Graysville
Mr.	Eddington	Mike	City of Birmingham
Mr.	Fowler	James	City of Birmingham
Mr.	Hanner	Gary	St. Clair County
Mr.	Hatcher*	Chris	City of Birmingham
Mr.	Hawkins	Fred	Shelby County - Alabaster
Ms.	Hester*	Christie	Shelby County
Mayor	Hogeland*	Stan	Jefferson County Municipalities – Gardendale
Mr.	Holladay*	Scott	Shelby County
Mr.	Jacks*	Tim	St. Clair County Public Transportation
Commissioner	Knight*	Joe	Unincorporated Jefferson County
Mr.	Leonard*	DeJarvis	ALDOT East Central Region
Mr.	Lindsey*	Brad	Alabama Department of Transportation (non-voting)
Mr.	Markert*	Cal	Unincorporated Jefferson County
Mr.	Martin	Mac	Jefferson County - Hoover
Mayor	McClusky	Patrick	Jefferson County Municipalities - Homewood
Mayor	McCondichie	Roger	Jefferson County Municipalities - Brookside
Mr.	Mitchell	Chaz	City of Birmingham
Mayor	Nix	Charles	Jefferson County Municipalities – West Jefferson
Ms.	Nolen*	Maranda	St. Clair County
Councilor	O'Quinn	Darrell	City of Birmingham
Mayor	Parsons	Steve	Jefferson County Municipalities – Sylvan Springs
Mayor	Perkins	Theoangelo	Shelby County - Harpersville
Mayor	Ragland	Johnny	Jefferson County Municipalities - Warrior
Mr.	Reeves	Chris	Shelby County - Hoover
Mr.	Revell	Edwin	City of Birmingham
Mayor	Richardson*	Gary	Jefferson County Municipalities - Midfield
Senator	Roberts	Dan	State of Alabama – State Senator (non-voting)
Commissioner	Shepherd	Rick	Shelby County Commission
Mr.	Smith*	Theodore	Birmingham-Jefferson County Transit Authority
Commissioner	Stephens	Jimmie	Unincorporated Jefferson County
Mr.	Washburn*	Nick	Blount County
Mayor	Waters	Gary	Shelby County - Pelham
Mayor	Welch	Stewart	Jefferson County Municipalities - Mountain Brook
Mayor	Woodfin*	Randall	City of Birmingham

RESOLUTION 2021-2

FY 2022 Unified Planning Work Program Birmingham Metropolitan Planning Organization (MPO)

WHEREAS, the Birmingham Metropolitan Planning Organization (MPO) is the organization designated by the Governor of the State of Alabama as being responsible, together with the State of Alabama, for implementing the applicable provisions of 23 USC 134 and 135 (amended by the FAST Act, Sections 1201 and 1202, December 2015); 42 U.S.C. 2000d-1, 7401; 23 CFR 450 and 500; 40 CFR 51 and 93; and

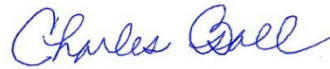
WHEREAS, the U.S. Department of Transportation requires all urbanized areas, as established by the U.S. Bureau of the Census, doing area-wide urban transportation planning that involves more than one Department of Transportation operating administration, to submit a Unified Planning Work Program as a condition for meeting the provisions of 23 U.S.C. § 134; and

WHEREAS, consistent with the declaration of these provision, the staff of the Birmingham MPO, in cooperation with the Alabama Department of Transportation, has prepared a Unified Planning Work Program for Fiscal Year 2022.

NOW THEREFORE, BE IT RESOLVED that the Birmingham Metropolitan Planning Organization (MPO) adopts the Unified Planning Work Program for FY 2022 this 11th day of August, 2021.



Birmingham MPO Chair, Vice Chair, or Secretary



Charles Ball, Executive Director, RPCGB

TABLE OF CONTENTS

The Transportation Planning Process	1
Task 1.0 Administration	5
1.1 MPO Administration	5
1.2 Unified Planning Work Program	6
1.3 Capital and Operating Purchases.....	7
1.4 Education and Training	9
Task 2.0 Planning Information	10
2.1 Data Collection and Management.....	10
2.2 Data Analysis and Forecasting	12
2.3 Geographic Information Systems	14
2.4 Model Development Program	16
Task 3.0 Public Involvement.....	18
3.1 Public Involvement and Outreach	18
Task 4.0 Environmental Process Planning.....	20
4.1 Air Quality Planning	20
4.2 Environmental Consultation Process.....	21
4.3 Advance Planning, Programming, and Logical Engineering (APPLE)	23
4.4 Climate Change.....	25
Task 5.0 Transportation Systems	27
5.1 Regional Transportation Plan	27
5.1.1 Air Quality Conformity Analysis and Reporting.....	29
5.1.2 Regional Transportation Plan Project Listing for Air Quality Conformity	30
5.2 Transportation Improvement Program (TIP).....	31
5.2.1 Amend TIP Project Listings for Air Quality Conformity	32
5.3 Public Transportation Planning	33
5.4 Active Transportation Planning	34
5.5 Logistics Systems Planning	36
5.6 Transportation System Performance Management and Monitoring.....	37
5.7 Transportation Safety Planning	39
5.8 Technical Assistance for Local Communities and Agencies.....	41
Task 6.0 Programs and Technical Assistance	43
6.1 CommuteSmart Program (Rideshare)	43
6.2 Building Communities Program	44
6.3 5310 Grant Program	46
Task 7.0 ADA	47
7.1 Compliance	47

APPENDICES

List of Acronyms..... A-1

Table 1: FY 2022 Organizational Responsibility, Federal A-2

Table 2: FY 2022 Funding Sources..... A-4

Structure of the Birmingham MPO A-5

Metropolitan Planning Area/Transportation Management Area Map..... A-6

Planning Factors A-7

Livability Indicators A-8

Current and Potential Planning Studies A-9

THE TRANSPORTATION PLANNING PROCESS

OVERVIEW

As a condition to the receipt of federal highway and transit capital and operating assistance, each Metropolitan Planning Organization (MPO) is required to have a transportation planning process. This process includes the development of a long-range or regional transportation plan, short-range Transportation Improvement Program (TIP), a plan to promote attainment of air quality standards, human services coordinated transportation plan, and a work program that identifies planning and project development activities.

Certification of the transportation planning process is conducted every four years by the Federal Highway Administration (FHWA) and the Federal Transit Administration (FTA) and is necessary to receive surface transportation program, air quality, national highway system, interstate maintenance, state bridge replacement, and transit capital and operating funds. The Birmingham Metropolitan Planning Organization (MPO) membership is geographically representative of the Metropolitan Planning Area (MPA), the entire boundaries of Jefferson and Shelby counties, and portions of Blount and St. Clair Counties, based upon the most recent (2010) decennial U.S. census.

The Regional Planning Commission of Greater Birmingham (RPCGB) is the designated recipient of U.S. Department of Transportation (USDOT) planning funds used to assist the MPO in the performance of its responsibilities. These funds are designated by the State of Alabama, in agreement with the RPCGB.

Work tasks described in this report are conducted on a continual basis. An agreement among the Alabama Department of Environmental Management (ADEM), Alabama Department of Transportation (ALDOT), Birmingham-Jefferson County Transit Authority (BJCTA), RPCGB, Jefferson County Department of Health (JCDH), and the MPO outlines the responsibility of each organization in the transportation planning process.

PURPOSE

The Unified Planning Work Program (UPWP) is the document that guides the MPO in fulfilling its planning responsibilities for the upcoming year. The primary objective of the UPWP is the development of an integrated planning program that considers planning activities and coordinates these activities to produce a total transportation plan that serves everyone. The UPWP presents the budget and work tasks necessary to accomplish and maintain the transportation planning process within the Birmingham MPA.

VISION

Following is the vision statement for the Birmingham metropolitan area:

Transportation has become the connective tissue of the region. By foot, by bike, by car, or by public transportation, residents experience reduced congestion and higher mobility, both of which are the result of four important decisions:

- 1. Preserving and improving the existing local and interstate highways;*
- 2. Developing a responsive, efficient, and effective public transportation system;*
- 3. Supporting the use of alternative transportation modes; and*
- 4. Encouraging sustainable development patterns.*

This UPWP contains work tasks necessary for the RPCGB, BJCTA, and ALDOT to conduct transportation planning activities for the Birmingham MPA.

TITLE VI IN THE DEVELOPMENT OF THE UPWP

It is the policy of the Birmingham MPO to provide open public input in the preparation of plans and programs, consistent with the requirements under the current transportation legislation:

1. **Open Process:** To have an open planning process that encourages early and continued public participation.
2. **Information Access:** To provide complete and timely information to interested parties and the public regarding the plans, programs, procedures, policies, and technical data produced or used during the planning process.
3. **Notice of Activities:** To provide timely and adequate public notice of meetings, reviews, and major document availability.
4. **Public Input and Organization Response:** To demonstrate consideration and recognition of public input and to provide appropriate responses thereto.
5. **Inclusive Process:** To protect low income and minority communities/citizens from disproportionate adverse impacts based on planning and implementation of projects and programs identified in the RTP and TIP. The MPO provides considerable opportunities for participation, both formal and informal, for citizens to share ideas and concerns throughout the planning and decision-making process.

Additionally, the Birmingham MPO is and will be compliant with and will follow all Title VI laws, processes, and programs to include the following:

- Civil Rights Act of 1964, 42 USC 2000d, et seq. which prohibits exclusion from participation in any federal program on the basis of race, color, or national origin.
- 23 USC 324 which prohibits discrimination on the basis of sexual orientation, adding to the landmark significance of 2000d. This requirement is found in 23 CFR 450.334(1).
- Rehabilitation Act of 1973, 29 USC 701 Section 504, which prohibits discrimination on the basis of a disability, and in terms of access to the transportation planning process.
- Americans with Disabilities Act of 1990 which prohibits discrimination based solely on disability. ADA encourages participation of people with disabilities in the development of transportation and para-transit plans and services. All meetings conducted by the MPO will take place in locations which are accessible by persons with mobility limitations or other impairments.
- Executive Order 12898 or referred to as Environmental Justice, which requires that federal programs, policies and activities affecting human health or the environment will identify and avoid disproportionately high and adverse effects on minority or low-income populations. The intent is to ensure that no racial, ethnic, or socioeconomic group bears a disproportionate share of negative environmental consequences resulting from government programs and policies.
- A Limited English Proficiency (LEP) Plan is required by Title VI of the Civil Rights Act of 1964, Executive Order 13166, and FTA Circular C 4702.1B, October 2012. The Birmingham MPO has completed a Four Factor Analysis of the Birmingham MPA to determine requirements for compliance with the Limited English Proficiency (LEP) provisions. An LEP Plan has been developed and can be accessed as part of the Public Participation Plan at <http://www.rpcgb.org/transportation-planning/public-involvement/>

The UPWP is developed annually and is available on the RPCGB website prior to being introduced for discussion at committee meetings. All committee meetings of the MPO are preceded by notices (containing the agenda, date, time, and location of the meeting) and supporting documentation. Notice is provided at least one week prior to meetings or as designated in committee bylaws. Notice is also provided to local media representatives and groups and individuals representing disadvantaged communities. All notices ask that

individuals needing special accommodations notify the RPCGB at least three business days prior to the date of the meeting, so necessary arrangements can be made. Notices are posted on the internet and the bulletin board outside RPCGB offices. The public has an opportunity to participate in discussions held at the committee meetings. Detailed public participation procedures are outlined in the 2014 Public Participation Plan (PPP) which can be found at <http://www.rpcgb.org/transportation-planning/public-involvement/>

SCOPE OF THE PLANNING PROCESS

Planning tasks reflect the planning factors in the Fixing America's Surface Transportation (FAST) Act, listed on A-7. The committee process is the basis for conducting UPWP tasks. Meetings of the Transportation Citizens Committee, Transportation Technical Committee, MPO Advisory Committee, and the MPO Policy Committee are held monthly or as needed. In addition to the four transportation committees, subcommittees and joint committees are regularly used for the development of the Transportation Improvement Program (TIP), Regional Transportation Plan (RTP), congestion management activities, and major transit projects.

Most traditional tasks are funded with planning funds (PL). Specialized tasks related to ridesharing, air quality, and local land use/transportation, utilize supplemental funds from the Congestion Mitigation Air Quality Program (CMAQ) and Surface Transportation Block Grant (STBG). Large-scale transit planning projects are funded through the FTA.

Livability Principles and Indicators

Federal and state agencies are using performance measures as a way of ensuring greater accountability for expenditure of public funds. ALDOT has adopted the Livability Principles and Indicators on A-8 as a sustainability measurement against future actions. These indicators will be used to develop the Birmingham RTP, TIP, Public Participation Plan, Congestion Management Plan, and the Air Quality Conformity Report.

Transportation Performance Management

MAP-21 and the FAST Act created a performance-based surface transportation program with requirements for ALDOT, the Birmingham MPO, and BJCTA. MPOs are required to adopt targets or accept ALDOT's targets for the following categories:

Injuries and Fatalities

- Serious injuries per vehicle miles traveled
- Fatalities per vehicle miles traveled
- Total serious injuries, total fatalities
- Non-motorized fatalities
- Serious injuries

Pavement

- Percentage of pavement on the interstate in good condition
- Percentage of pavement on the interstate in poor condition
- Percentage of pavement on the non-interstate NHS in good condition
- Percentage of pavement on the non-interstate NHS in poor condition
- Percentage of bridge decks on the non-interstate NHS in good condition
- Percentage of bridge decks on the non-interstate NHS in poor condition

Travel

- Percentage of person-miles traveled on the interstate that are reliable
- Percentage of person-miles traveled on the non-interstate NHS that are reliable
- Truck travel time reliability index

- Annual hours of peak excessive delay per capita
- Percent of non-single occupancy vehicle (SOV) travel
- Total emissions reduction

FTA's final rule defined the term "state of good repair" (SGR) and established a minimum federal requirement for transit asset management. This requirement applies to all recipients and subrecipients who own, operate, or manage public transportation capital assets. SGR performance measures include:

- Rolling stock (revenue vehicles): percentage by type that exceed useful life benchmark (ULB)
- Equipment (over \$50,000): percentage of non-revenue service vehicles by type that exceed ULB
- Facilities (FTA sponsored): percentage rated less than 3.0 on the TERM scale

On July 19, 2018, FTA published the Public Transportation Agency Safety Plan (PTSASP) Final Rule, which requires certain operators of public transportation systems that receive federal funds under FTA's Urbanized Area Formula Grants to develop safety plans that include the processes and procedures to implement Safety Management Systems (SMS). THE PTASP Final Rule requires that all public transportation providers develop safety performance measures. The below measures must be reflected in MPO transportation plans and TIPS updated or amended after July 20, 2021:

- Fatalities and rate of fatalities
- Injuries and rate of injuries
- Safety events and rate of safety events
- Mean distance between major mechanical failures

TASK 1.0: ADMINISTRATION

1.1 MPO Administration

Objectives

To provide transportation committees, agencies, governments, and the public with transportation-related information, education, and training, to support transportation operations, and federal, state, and local transportation initiatives.

Previous Work

- Prepared for and participated in monthly committee meetings
- Attended RPCGB Board meetings
- Prepared and submitted invoices to ALDOT and reviewed RPCGB financial statements
- Provided information to the RPCGB auditors and reviewed audit report
- Reviewed all agreements for consistency with bylaws
- Reviewed all funding agreements
- Prepared for and participated in TMA certification review
- Provided information and assistance to individuals, businesses, organizations, and committees
- Participated in cooperative efforts with agencies and organizations outlined in the C3 agreement

Proposed Work

- Monthly business and committee meetings (Citizens, Technical, Advisory, and Policy)
- Ad hoc committee meetings (Congestion Management)
- Attend RPCGB Board, Finance, Program Budget, and annual meetings
- Prepare and submit monthly invoices to ALDOT and review monthly financial statements
- Provide information to the RPCGB auditors and review draft and final audit reports
- Review agreements for consistency with regulations and bylaws
- Prepare scopes of work for programs and projects
- Provide information and assistance to individuals, businesses, organizations, and committees
- Participate in cooperative efforts with governments, agencies, and organizations

Products

- Committee notices, agendas, minutes, resolutions, and supporting documentation
- Invoices to ALDOT
- Staff services necessary to ensure certification of the transportation planning process

Staffing

RPCGB

Timeline for Proposed Work

Ongoing activities throughout the fiscal year

Financial Responsibility

FHWA PL and FTA 5303 planning funds have been consolidated into one PL category

Total	\$278,896
PL	\$223,117
Local	\$55,779

1.2 Unified Planning Work Program

Objectives

To produce a document that outlines work and identifies planning priorities and activities to be carried out within the Birmingham MPA.

Previous Work

- Adopted a UPWP that identified tasks and funding sources
- Annual report of activities to ALDOT
- Prepared FY 2022 UPWP

Proposed Work

- Priorities for funding projects in the TIP are determined from the National Planning Goals, federal planning factors, and the interests of the transportation committees
- Draft and submit annual report to ALDOT
- Prepare a FY 2023 UPWP

Products

- UPWP for FY 2023
- FY 2022 annual report

Staffing

RPCGB

Timeline for Proposed Work

- FY 2023 UPWP - Summer 2022
- FY 2022 annual report - September 2022

Financial Responsibility

FHWA PL and FTA 5303 planning funds have been consolidated into one PL category

Total	<u>\$18,750</u>
PL	\$15,000
Local	\$3,750

1.3 Capital and Operating Purchases

Objectives

To maintain, upgrade, and purchase software and hardware for gathering information, simplifying tasks, and articulating data to support transportation planning functions.

Previous Work

Purchased demographic information

Proposed Work

- Software purchases, including license/maintenance fees and upgrades, are regularly made for geographic information systems, surveys, databases and spreadsheets, graphics, and operating systems
- Capital purchases to include servers, personal computers and peripherals, and hardware/software for field data collection
- Analyze existing and potential transit routes and evaluate demographic information
- Monitor and contextualize capacity utilization, operational performance, and finance data

As outlined in the *Agreement for Administering U.S. Department of Transportation for Financial Assistance for Transportation Planning between the State of Alabama and the Regional Planning Commission of Greater Birmingham*, Article 21 states, in part, “All purchases over \$1,500 must be approved by the State, in advance, in writing, to be eligible for reimbursement.” Further, ALDOT requires anticipated purchases more than \$5,000 to have a line item entry in the UPWP.

The following capital and operating equipment are programmed:

Product	Total Cost	UPWP Task	Purpose
3D Analyst	\$500	2.3	Desktop extension license for GIS analysis
Adobe Creative Cloud/Pro	\$8,000	2.2	Software subscription for online map publishing and document production
ArcEditor CU/SU	\$9,900	2.3	Desktop software licenses for GIS analysis and mapping
ArcGIS Online/ ArcGIS Pro	\$5,000	2.3	GIS subscription service for cloud-based mapping
ArcInfo CU	\$3,000	2.3	Desktop software licenses for GIS analysis and mapping
ArcServer Enterprise	\$5,000	2.3	GIS server software application
ArcView CU	\$2,700	2.3	Desktop software licenses for GIS analysis and mapping
ArcView SU	\$700	2.3	Desktop software licenses for GIS analysis and mapping
Community Viz	\$1,400	2.2	Desktop software license for GIS data analysis and modeling
Equipment for Planning	\$3,500	2.3	Tablets, Projectors, kiosk mounts for public input, etc.
ESRI Community Analyst	\$1,000	2.3	GIS subscription service for data profiles and analysis
HP DesignJet Printer/Plotter	\$15,000	2.3	New printer/plotter hardware
InfoGroup	\$8,000	2.1	Employment data purchase for GIS analysis
Linear Referencing System (LRS) Data Acquisitions	\$2,500	2.2	Transportation data purchases for LRS event table production, GIS analysis, and model forecasting
Aerial Imagery, LiDAR, & Planimetric Data	\$30,000	2.3	Provide spatial data resources in support of agency operations for program management and project analysis
Maxwell Render Full Suite	\$1,100	6.2	Advanced 3D rendering software
MioVision Data Processing	\$3,000	5.6	Traffic cameras data collection and processing

Product	Total Cost	UPWP Task	Purpose
Network Analyst	\$500	2.3	Desktop extension license for GIS analysis
SketchUp Pro	\$1,100	6.2	3D modeling software upgrade
Southern Exposure Information	\$5,000	2.2	Construction Permits and Housing Market Data for socioeconomic and economic forecasting/analysis
Spatial Analyst	\$500	2.3	Desktop extension license for GIS analysis
Woods and Poole	\$500	2.2	Demographic and socioeconomic data purchase for analysis and forecasting.
X Tools Pro	\$265	2.3	Desktop software licenses for GIS analysis and mapping
TOTAL ANNUAL COSTS	\$93,165		

Products

- Software and upgrades
- Hardware and servers
- Data and data products
- License and maintenance fees

Staffing

RPCGB and third-party suppliers

Timeline for Proposed Work

Ongoing activities throughout the fiscal year

Financial Responsibility

FHWA PL and FTA 5303 planning funds have been consolidated into one PL category

Total	<u>\$108,165</u>
PL	\$86,532
Local	\$21,633

1.4 Education and Training

Objectives

To develop and maintain technical proficiency of staff to enable proper guidance and development of the planning process.

Previous Work

Staff members attended, made presentations, hosted, and assisted with workshops, conferences, and trainings; subscribed to and read relevant professional publications.

Proposed Work

- Attend, make presentations, host, and/or assist with workshops, conferences, and trainings
- Subscribe to and read relevant professional publications

Products

- Annual transportation/planning conferences
- Training for elected officials, municipal staff, and consultants
- Other workshops, conferences, and trainings

Staffing

RPCGB

Timeline for Proposed Work

Ongoing activities throughout the fiscal year

Financial Responsibility

FHWA PL and FTA 5303 planning funds have been consolidated into one PL category

Total	<u>\$75,000</u>
PL	\$60,000
Local	\$15,000

TASK 2.0: PLANNING INFORMATION

2.1 Data Collection and Management

Objective

To collect, create, and maintain data in support of local and regional transportation and community planning projects.

Previous Work

The RPCGB has purchased data and data subscriptions from vendors including ESRI, InfoGroup, Southern Exposure, Geolytics, and other supplementary data services such as Strava and Inrix transportation data. The RPCGB expanded its existing GIS data inventory to include additional economic, transportation, property, environmental, and demographic data. Data collection activities have focused on population and socioeconomic datasets, local developments, transportation, and employment characteristics.

The maintenance and expansion of event tables for use in the regional LRS is necessary to better manage and analyze transportation issues. The RPCGB has continued to collect and build transportation data to improve the capabilities of the LRS. Event tables specific to transit routes, the Inrix (travel time and freight) datasets, the TIP, and functionally classified roadways have been evaluated for incorporation into the LRS.

RPCGB continues to expand its GIS resources. Through the sustained production and maintenance of demographic, socioeconomic and transportation data, RPCGB has advanced its GIS data inventory and has added cloud-based mapping resources, geo-applications, and open data resources to its GIS assets. Mobile GIS resources have additionally been utilized.

Proposed Work

The RPCGB will purchase data from vendors such as ESRI, InfoGroup, Geolytics, Southern Exposure, Woods and Poole Economics, and other supplemental data services including origin and destination data, and Inrix (to support travel time data collection efforts for functionally classified non-National Highway System roadways), and Strava to support non-motorized transportation. Reports generated will address demographic/socioeconomic trends, county profiles, comparison reports, socioeconomic datasets, transportation system inventories, travel characteristics, and infographics. Additional data collection activities may include, but are not limited to, physical data collection, market data, industry subscriptions, online data purchases, and data services.

The RPCGB will work with the Alabama Department of Transportation (ALDOT) to coordinate and align the RPCGB's LRS with ALDOT's LRS to create a near seamless data flow between the two systems. The RPCGB also will maintain and expand event tables for use in these LRS as it is necessary to better identify, analyze, and manage transportation issues. The RPCGB will continue to collect and build transportation data to improve the capabilities of the LRS. Event tables specific to transit routes, roadway ownership and maintenance, the TIP, and functionally classified roadways will be incorporated into the LRS. The maintenance and expansion of event tables for use in the regional LRS is necessary to better manage and analyze transportation issues. The RPCGB will continue to collect and build transportation data to improve the capabilities of the LRS.

The RPCGB will continue to expand its web presence through cloud-based mapping functionalities and open data resources. This web enhancement provides easier public access to tabular and spatial data to better facilitate data sharing and decision making. In addition to the provision of maps, map services, downloadable

spatial data, traffic counts, and associated reports, this portal is intended to provide a single-source point for information to the public, elected officials, and the development community.

The MPO will collect, maintain, and report on performance indicators, to include metrics to support the federal Planning Factors, for use in benchmarking transportation system performance and informing the decision-making process. This would include project prioritization and project selection as directed by Congress and regulated by the FHWA, and in support of other tasks within this document.

Products

- Update of the spatial data inventory and spatial data assets
- Spatial data expansion and maintenance through necessary development, purchases, and partnerships
- Production of demographic, socioeconomic, economic, transportation and other planning-related data files
- Produce regional reports that compare selected data and regional development characteristics. These products will include demographic and socioeconomic regional trends, regional population and employment projections, county and local profiles, and both themed analytical data reports and maps.
- Reporting on local roadway facility traffic counts, transit ridership, non-motorized travel information, and other transportation and planning statistics for incorporation into the LRS. Other information collected includes, but is not limited to: freight/goods movement, incident management, travel times, congestion by travel mode, TSMO, and regional roadway characteristics.
- Addition and update of static maps to the RPCGB website
- Expansion of the online map gallery to make selected thematic maps readily available for public use through the RPCGB website and project websites
- Expand public domain spatial datasets to the Open Data portal

Staffing

RPCGB, direct contract labor, and/or third-party contractors for activities, and organizations

Timeline for Proposed Work

Ongoing activities throughout the fiscal year

Financial Responsibility

FHWA PL and FTA 5303 planning funds have been consolidated into one PL category

Total	<u>\$125,000</u>
PL	\$100,000
Local	\$25,000

2.2 Data Analysis and Forecasting

Objectives

To collect, create, and maintain current and forecasted demographic and socioeconomic data used for the transportation demand model and other planning activities.

Previous Work

The RPCGB has continued to develop and refine demographic and socioeconomic data in support of its transportation and community planning efforts. In addition to the development of traffic analysis zone (TAZ) datasets, several intermediate year datasets have been developed. This data was developed for multiple census geographies, including TAZ, Block Group, Census Tract, Planning District, and County levels, and has been utilized for travel demand evaluations, as well as local area projects and publications. Continued refinement and maintenance of these forecasts has included data purchases, such as those from Data Axle, ESRI, and Woods & Poole Economics. The data has been used in projects and publications, including the Regional Transportation Plan (RTP) and in support of other agency planning objectives.

The RPCGB has continued to collect a variety of data, such as Census, Economic, Natural Resources, Transportation, Transit, and related demographic and socioeconomic data, for use within the overall local and regional planning environment.

The RPCGB developed and maintained a regional transportation demand model for the Birmingham MPA, which is a primary screening tool used to identify deficiencies in the future transportation system. The Cube Voyager (Avenue) modeling software was used for travel demand modeling and all other applicable processes, up to and including air quality conformity analysis in support of budget-based estimate reporting.

Proposed Work

Proposed work includes the continued refinement and maintenance of forecast datasets. Proposed work also includes the development, maintenance, and reporting of regional planning factors. Toward this effort, additional data may be purchased from selected vendors for use in the development of the forecasts, and may include, but not be limited to, such vendors as: ESRI, Data Axle, Woods and Poole, Southern Exposure, Geolytics, and/or other appropriate economic and/or forecasting tools and models.

In support of broader regional planning efforts, the proposed forecasting will consider data and projections outside the MPO boundaries. The RPCGB will also coordinate with appropriate agencies beyond the MPO boundaries in this effort.

Products

- Socioeconomic, demographic, and economic datasets (base year and forecast) by TAZ, planning district, census tract, county, and region
- Regional Projections Report
- Special Reports
- Support of other agency reports and studies

Staffing

RPCGB, direct contract labor, and/or third-party contractors for activities, and organizations

Timeline for Proposed Work

Ongoing activities throughout the fiscal year

Financial Responsibility

FHWA PL and FTA 5303 planning funds have been consolidated into one PL category

Total	<u>\$25,000</u>
PL	\$20,000
Local	\$5,000

2.3 Geographic Information Systems

Objectives

To provide spatial data resources, including software, hardware, and data, to support agency operations for both program management and project analysis.

Previous Work

The RPCGB has been successful in developing and expanding its GIS capabilities, including ESRI cloud-based mapping services. This mapping service has enabled the RPCGB to publish interactive thematic maps in a public domain gallery. In addition to the visual dissemination of regional data, users can query data and incorporate published features into their own maps. The RPCGB has additionally added the functionality of geospatial applications, enhanced map viewing applications, and launched an Open Data portal for the dissemination of public domain geospatial data.

RPCGB has continued to expand its library of GIS datasets, including county parcel updates, street centerlines, building footprints, and aerial imagery. Continued utilization of the ESRI geospatial platform has been critical to the success of the planning staff through improved project analysis. RPCGB upgraded to ArcMap 10.8 and has remained current on maintenance through its participation in the state Enterprise License Agreement (ELA) program. The RPCGB has also continued to utilize mobile GIS technology to enhance data collection efforts.

Proposed Work

- Develop and expand GIS capabilities specific to the ESRI cloud-based map service platform and geospatial/mobile application needs
- Build inventory of GIS datasets, including both raster and vector datasets
- Acquire routine imagery and/or LiDAR updates to support its planning efforts
- Acquisition, development, and maintenance of GIS-related data for use in the spatial analysis and visual display components of transportation and community planning projects
- Advance the development of an online GIS open data portal site in cooperation with participating agencies to enable public access to selected GIS datasets (public domain) to promote data sharing and use of common datasets
- Additional training and/or GIS-related software or hardware, applications, extensions, or licenses may be acquired once evaluated and determined to be necessary and appropriate to fulfill project or staff expectations
- Map Services

Products

- Hardware/software acquisition
- Derivative products and analyses
- Partnerships and collaborations
- Updated orthophotographic imagery
- Updated LiDAR
- Continuation of data collection, development, and maintenance
- Expansion of the GIS system including the cloud-based platform environment
- Expansion of GIS capabilities through training, conferences, workshops, and product evaluations
- Local government hardware and software assistance
- ESRI maintenance of the GIS system, map services and analysis tools (ESRI ArcMap, ArcGIS Online, ArcGIS Pro, and ESRI Community Analyst)

- The identification and acquisition of additional GIS visualization and analytical tools such as ArcGlobe, ArcScene, City Engine, and ArcGIS Pro

Staffing

RPCGB, direct contract labor and/or third-party contractors for activities, and organizations

Timeline for Proposed Work

Ongoing activities throughout the fiscal year

Financial Responsibility

FHWA PL and FTA 5303 planning funds have been consolidated into one PL category

Total	<u>\$62,500</u>
PL	\$50,000
Local	\$12,500

2.4 Model Development Program

Objectives

To develop and maintain traffic models, air quality emission models, and traffic simulation model for the transportation planning process.

Previous Work

Cube Voyager is the primary travel demand modeling software in use by the Birmingham MPO. It is used to analyze travel demands within the Census 2010 Birmingham MPA, network travel demand modeling, and in support of air quality conformity estimate preparation using the Motor Vehicle Emission Simulator (MOVES) software. RPCGB reviewed OD data sets by Streetlytics and incorporated some of it into the module to improve the travel demand output. The highway network was expanded by including portions of Blount and St. Clair Counties based on the Census 2010. Within the Birmingham MPA, both Cube Voyager and MOVES2010b are used for the 2045 RTP and for Air Quality Transportation Conformity Determination, respectively. In early of FY2019, both travel demand model runs and air quality model runs for the 1997 ground level Ozone 1-hour standard for the 2040RTP by FHWA/EPA were completed. With new base year 2015, highway networks were coded for years 2017, 2024, 2034, 2040, and 2045 for the 2045RTP. Travel demand model runs and air quality model runs were completed for the 2045RTP.

The MOVES2010b has been updated to the MOVES2014b, used as the regional transportation conformity air model for the new FY 2020-2023 TIP and 2045RTP in 2019. The MOVES2014b is used for the regional emission rate estimates and CMAQ project emission calculations in 2018, 2019, and 2020. Traffic projection and OD analysis based on travel demand model are conducted in various studied and projects in 2018. The transit network updates based on 2015-2016 are completed.

In FY 2011, Cube Avenue was purchased and has been successfully tested for subarea traffic simulation. The Cube Avenue model was successfully expanded and applied at the regional level, enabling the Birmingham MPO to evaluate the specific impacts of projects at a larger geographic scale, as well as the ability to conduct before and after studies.

In FY 2015, Synchro Studio was purchased and has been installed successfully for corridor traffic simulation.

Proposed Work

The RPCGB will maintain the Cube Voyager and Air Model for the short and long range transportation plans. In recognizing the changes affecting the Greater Birmingham region, and the changing needs of the MPA as it relates to transportation planning, the RPCGB will continue to review the OD data sets generated from prob data sets. The transit network and future transit development plan will be merged to model. The model will be modified to address regional travel demands, congestion situation, and performance measures. The more local data sets will be compiled as inputs for Air Model.

Specific work tasks include:

- Development and maintenance of the regional travel demand model for the Birmingham MPA, as needed for RTP and TIP updates
- Network and social economic modifications to fit in the new Census 2020 requirements
- Training of staff to utilize the best modeling practices
- Work with contractor to improve travel demand model in network expansion GIS based, transit, walking/biking mode, truck assignment, and calibration/validation
- Utilization of the model in support of existing projects and scenario planning

- Development, update, and maintenance of Air Quality Emission Model. Update MOVES input files with all local data sets and validate speed profiles based on local observations. Emissions factors will be developed in accordance with MOVES3 to meet the requirements set forth in 40 CFR 51 and 93.
- Cooperate with ALDOT, ADEM, FHWA, FTA, EPA, and other agencies to oversee/share the data collections, methodologies of data development, documentations, and modeling practices
- Project level analysis air quality models will be developed
- Will add scripts into models to address performance measures related to congestion mitigation and air quality
- Modify the model/factors in order to merge the new OD data sets to the cube voyager
- Use Synchro Studio to enhance analyses of existing traffic conditions and if necessary, operational and scenario planning in the corridor studies and the transportation sectors of the Comprehensive Plan

Products

- New base year 2020-2021 with OD data sets and New Census 2020
- Travel demand model updates
- Update Air Quality Models to the latest version, MOVES3 for regional emission rate data sets
- Project Level Analysis Model Runs for CMAQ projects
- Congestion and Air Quality Analysis related to Performance Measures

Staffing

RPCGB, direct contract labor, and/or third-party contractors for activities, and organizations

Timeline for Proposed Work

Ongoing activities throughout the fiscal year

Financial Responsibility

FHWA PL and FTA 5303 planning funds have been consolidated into one PL category

Total	<u>\$125,000</u>
PL	\$100,000
Local	\$25,000

TASK 3.0: PUBLIC INVOLVEMENT

3.1 Public Involvement and Outreach

Objectives

To maintain a process for providing opportunities for everyone to be involved in the transportation planning process, with attention to individuals who are disadvantaged and/or vulnerable.

Previous Work

- Announcements for all meetings, trainings, and public involvement were posted on the RPCGB/MPO website and emailed to parties of record. Notices and supporting documentation were provided to committee members.
- Maintained and updated website with links to documentation
- All public involvement procedures were followed; social media was used to communicate with the public; online participation for all planning activities was encouraged.
- Completed DBE and Title VI report and submitted to ALDOT

Proposed Work

- Coordinate with ALDOT on setting goals, objectives, performance measures, and targets, as required by the FAST Act, for inclusion into the operational plans (Regional Transportation Plan, Transportation Improvement Program, Congestion Management Plan, and Conformity Report)
- Maintain MPO website with updates and links to meeting and project documentation
- Update and maintain MPO participant database
- Indicator data collection, processing, and presentation
- Meetings and meeting announcements, including monthly committee meetings, public involvement meetings, project meetings, and community outreach, as needed
- Newsletters
- Direct mailings, email announcements, press releases, flyers, notices, and fact sheets
- Facilitate technical workshops. Costs to include, but are not limited to, speakers, logistics, and handouts.
- Develop interactive online surveys and other web-based outreach activities
- Prepare and distribute comment forms and surveys
- Revise the Public Involvement Plan
- Title VI and DBE Activities:
 - Documentation of minority and DBE representation
 - Documentation of third-party DBE activities conducted for projects funded by FHWA and FTA

Products

- Documentation of public involvement meetings/outreach activities
- Documentation and reporting of public involvement outreach
- Title VI/DBE Report
- Transportation planning/project web pages
- MPO member training and education events/courses
- Public Involvement Plan

Staffing

RPCGB, direct contract labor and/or third-party contractors

Timeline for Proposed Work

- Title VI Report – October 2021
- DBE Report – October 2021
- Public Involvement Plan – Winter 2021

Financial Responsibility

FHWA PL and FTA 5303 planning funds have been consolidated into one PL category

Total	<u>\$11,875</u>
PL	\$9,500
Local	\$2,375

TASK 4.0: ENVIRONMENTAL PROCESS PLANNING

4.1 Air Quality Planning

Objectives

To achieve and maintain compliance with national air quality standards, to protect and improve public health, to minimize the economic impacts on existing businesses and support economic growth consistent with clean air goals in Jefferson and Shelby counties.

Previous Work

Alabama Partners for Clean Air (APCA) worked many outreach events throughout the year, particularly in the business and civic community. APCA conducted voluntary emission testing, promoted idle-free zones, and facilitated a Car Care program. A report documenting the program and funding activities of APCA was completed for the period October 1, 2020 – September 30, 2021. Coordinated with ALDOT on setting goals, objectives, performance measures, and targets, as required by the FAST Act.

Proposed Work

The following activities will be conducted by the APCA, with assistance provided by the RPCGB:

- Marketing and Public Outreach educates the public about air quality issues and the consequences that individual choices have on air quality
- Employer and employee outreach to get major employers involved in air quality issues and encourage employees to travel to work by modes other than single-occupant vehicles
- Science and Environmental Education teaches children about air pollution, its health impacts, and how it can be prevented
- Clean Cities and Alternative Fuels program to reduce emissions from fleet vehicles through hybrid technology and alternative fuels. The Alabama Clean Fuels Coalition is lead partner
- Air Quality Forecasting program is to produce and issue daily forecasts of particle pollution levels in Jefferson and Shelby counties. The lead partner for this activity is the Jefferson County Department of Health.
- Voluntary Emissions Testing and Vehicle Repair provides a free emissions check for vehicle owners and encourages owners of high emitters to have their vehicles serviced
- Program Administration includes managing all air quality contracts, processing invoices, producing an annual report, monitoring performance and execution of contracts, and providing support to APCA
- Coordinate with ALDOT requirements of the FAST Act

Products

Annual Report documenting contract performance of organizations, including emissions reductions for the previous fiscal year

Staffing

RPCGB, direct contract labor and/or third-party contractors for activities, and organizations

Timeline for Proposed Work

Annual Report – April 2022

Financial Responsibility

Total	<u>\$975,000</u>
CMAQ	\$780,000
Local	\$195,000

4.2 Environmental Consultation Process

Objectives

To link the transportation planning and environmental assessment processes early in the project development phase. To inform the project development and NEPA processes with the results of the environmental consultation process. To establish inter-agency, cross-disciplinary communication, and education. To identify and pursue collaborative, cross-disciplinary environmental mitigation strategies and funding opportunities.

Previous Work

- Collected a Brownfields database for the Voluntary Cleanup Program and Targeted Assessment locations
- Participated in the Brownfield Task Force
- Consulted with federal and state resource agencies regarding the development and advancement of federal-aid, and state/locally funded transportation projects
- Environmental data collected to catalog and update information specific to:
 - Hazardous Waste Air Release (FRS sites)
 - Superfund Sites
 - Toxic Release Inventory
 - Brownfields
 - Environmental Hazards

Proposed Work

- Environmental Mapping - continuous updates and refinements to the environmental maps and data including cultural resources
- Participate in and provide support to Brownfield planning efforts
- Promote consistency between the RTP and state and local land use plans and plans for conservation and development
- Encourage the reduction or mitigation of stormwater impacts on surface transportation
- Outreach and Education Activities - Provide educational opportunities and training to state and municipal governments environmental planning topics

Notes:

1. The Alabama Department of Transportation – Environmental Technical Section (ALDOT ETS) shall remain the sole arbiter of environmental issues on state and federal projects in Alabama and must be consulted in all instances. ALDOT may seek consultation with the Federal Highway Administration (FHWA) on certain matters and will seek federal approval on a project only when all issues have been addressed.
2. Except for certain duties and responsibilities extended to the Birmingham MPO in writing and specific to a particular project and/or a consultant representing an MPO for a specific project, all other actions are the province of ALDOT ETS.
3. Early or initial environmental coordination relating to a specific project with state and federal resource agencies shall only be carried out by the ALDOT ETS.

Products

- Environmental data acquisition and mapping
- Outreach and Education Activities

Staffing

RPCGB, direct contract labor and/or third-party contractors for activities, and organizations

Timeline for Proposed Work

Ongoing activities throughout the fiscal year

Financial Responsibility

FHWA PL and FTA 5303 planning funds have been consolidated into one PL category

Total	<u>\$1,875</u>
PL	\$1,500
Local	\$ 375

4.3 Advanced Planning, Programming, and Logical Engineering (APPLE)

Objectives

To improve the quality and timelines of the overall project development process by:

- Assisting local governments in determining project feasibility in advance of entering an expensive and extended project development process
- Assisting project sponsors in better articulating project scope and understanding both the planning considerations and potential costs
- Assisting the project development process by educating local governments about the ALDOT project development process
- Providing information to the Birmingham MPO to better manage uncertainties in program funding

Previous Work

Completed and Ongoing APPLE Projects include:

- City of Vestavia Hills - Cahaba Liberty Trail Project (complete)
- Homewood Intersection and Corridor Traffic Operational Study (complete)
- St. Clair County US 411 from CR 10 (Park Avenue) to Kerr Road (complete)
- Mountain Brook Traffic Study (complete)
- Pelham Trails and Greenways Study (complete)
- Mountain Brook Bridges Study (complete)
- Pelham New Roads Study (complete)
- Helena School Intersections Study (complete)
- Jefferson County Acton Road Study (complete)
- UAB Complete Streets/Road Diet Study (complete)
- Dunnington Valley Greenway Study (complete)
- Mountain Brook Sidewalks Study (complete)
- Lakeshore Extension Study (complete)
- CR-47/CR-39 Intersection Study (complete)
- Vulcan Greenway Study (complete)
- Crosshaven Drive Study (complete)
- Hollywood Blvd/US-280 Study (complete)
- 20th Street Study (complete)
- Avenue F Bridge Study (complete)
- Argo Intersections Study (complete)
- Gardendale New Road Study (complete)
- Cahaba River Road Study (complete)
- UAB North-South Streets Study (complete)
- Springville SR-174/Murphrees Valley Road Study (complete)
- US-411 Interchange Study (complete)
- Commuter Rail Study (complete)
- Crestwood Blvd Corridor Study (complete)
- Calera - State Route 25 Realignment Study (complete)
- Vestavia Hills Traffic Operations Study Phase 1 (complete)
- Mountain Brook Overton Road Traffic Study
- Homewood Central Avenue Connector Study (complete)
- Chelsea Chesser Drive Study (complete)
- Trussville Chalkville Road Study
- Helena Old Town Pedestrian Study

- Alabaster New Trails and Sidewalks Study
- Chelsea US-280 Traffic Operations Study

Proposed Work

The RPCGB will continue to assist local governments and small project sponsors in assessing a project’s feasibility. The feasibility assessment will better inform the local governments and small project decision-making process and aid them in determining their level of commitment for advancing the project. The goals of the APPLE program will be accomplished in several ways, including:

- Funding consultant/contractor work activities that directly develop of APPLE reports
- Managing the feasibility assessment process for small municipalities/local governments
- Support consultant/contractor activities as related to the development of APPLE reports
- Educating project sponsors and contractors about the ALDOT project development process

Products

- Project Specific Reports documenting feasibility analysis
- Status reports

Staffing

RPCGB, ALDOT, direct contract labor and/or third party contractors for activities, and organizations

Timeline for Proposed Work

Ongoing activities throughout the fiscal year

Financial Responsibility

Total	<u>\$500,000</u>
STPBH	\$400,000
Local	\$100,000

4.4 Climate Change

Objectives

- Develop Climate Change evaluation metrics
- Evaluate the RTP's impact on climate change
- Evaluate planned and programmed transportation projects' impact on climate change
- Provide guidance about regional strategies for air quality and congestion mitigation, as well as energy efficiency to reduce the Birmingham MPA's carbon footprint

Previous Work

Greenhouse Gas (GHG) emissions are set up as an option in the air quality model in FY 2018, 2019, and 2020. Previous work produced a report titled *Climate Change Considerations and On-Road Greenhouse Gas Emissions in the Birmingham Metropolitan Planning Area*.

Proposed Work

The Birmingham MPO has reassessed its approach to climate change, and how it will incorporate climate change into the metropolitan planning process. As such, the Birmingham MPO has chosen to narrow its focus, and will address road infrastructure vulnerability. The RPCGB will conduct a Vulnerability and Risk Assessment of transportation infrastructure by performing a thorough inventory and analysis of current road culverts/road crossings and report on the status and conditions of these assets. An element of this assessment will include the evaluation the impact of storm events and future climate change scenarios on the assets. The process for completing this project is to emulate, or follow, FHWA's current Vulnerability and Risk Assessment Conceptual Model and to utilize other studies that have taken place in the region to promote consistency of data.

Other climate change evaluation activities will consider:

- Update GHG inventory, and specifically the contribution of mobile source emissions
- Evaluate and monitor mobile source energy consumption
- Develop Climate Change Performance Measures - Establish GHG emission and mobile source energy consumption baseline measures
- Integrate Performance Measures - Incorporate GHG and mobile source energy consumption measures into the MPO's transportation system performance metrics
- Develop GHG and Energy Consumption Targets - Develop a recommended GHG emissions and mobile source energy consumption targets
- Identify a menu of potential climate change adaptation strategies

Products

- Vulnerability analysis of transportation infrastructure to climate change and weather hazards
- Set up GHG emissions inventory in MOVES3 model run
- Baseline climate change performance measures

Staffing

RPCGB, direct contract labor and/or third-party contractors, and organizations

Timeline for Proposed Work

Ongoing activities throughout the fiscal year.

Financial Responsibility

FHWA PL and FTA 5303 planning funds have been consolidated into one PL category

Total	<u>\$1,875</u>
PL	\$1,500
Local	\$ 375

TASK 5.0: TRANSPORTATION SYSTEMS

5.1 Regional Transportation Plan

Objectives

To ensure that the MPO maintains a long-range transportation plan for the Birmingham MPA that is:

- Technically based on the latest available data for land use, demographics, and travel patterns
- Comprehensive in nature and supports the development of a multimodal transportation system
- Philosophically based on regional goals and values, and are informed by the federal Planning Factors and Livability Principles
- Financially based on predictable, reliable funding sources

To ensure that the Regional Transportation Plan (RTP) promotes a performance-based planning approach, is consistent with local comprehensive plans and goals, and supports the federal Planning Factors and Livability Principles.

Previous Work

- Coordination with ALDOT to fulfill federal requirements related to performance measures for performance-based planning including the setting and tracking of targets
 - Reviewed ALDOT's recommendations for 2-Year targets for PM2 and PM3 performance measures
 - Presented PM1 targets to MPO Committees and sent resolution to ALDOT
- Discussed potential changes to various capacity projects with ALDOT and local sponsors and informed them of impacts to the 2045 RTP and Air Quality Conformity Analysis
- Coordination with IAC, ALDOT, FHWA and MPO committees

Proposed Work

- If required, amend the 2045 RTP Capacity Project List and maps as appropriate to be consistent with the FY 2020-2023 Transportation Improvement Program
- Partner or participate in regional transportation planning efforts conducted by ALDOT, other state and federal partners, member municipalities, or other agencies
- Coordinate with ALDOT and municipalities to develop a comprehensive process that would enable the MPO staff to track the status of all projects within the MPA
- Monitor the system performance report and make subsequent updates to evaluate the condition and performance of the transportation system in the Birmingham urbanized area with respect to the performance targets
- Data collection for use in RTP reports and analysis of proposed project and policy recommendations
- Update the Transportation System Management and Operations Plan
- Coordination with IAC, ALDOT, FHWA and MPO committees

Products

- Amend the 2045 RTP Capacity Project list and maps as needed
- Updated TSMO Plan and related data and materials

Staffing

RPCGB and direct contract labor and/or third-party contractors for activities, and organizations

Timeline for Proposed Work

Ongoing activities throughout the fiscal year

Financial Responsibility

FHWA PL and FTA 5303 planning funds have been consolidated into one PL category

Total	<u>\$181,250</u>
PL	\$145,000
Local	\$36,250

5.1.1 Air Quality Conformity Analysis and Reporting (RTP)

Objectives

To demonstrate that the RTP, and the funded projects and programs contained within it and the TIP, conform to the approved regional air quality standards as determined by the Statewide Implementation Plan (SIP), and are consistent with the Clean Air Act of 1990.

Previous Work:

- The RPCGB worked with the IAC to review proposals related to air quality and to recommend ways to reduce emissions and congestion. A new set of analysis years for air quality conformity has been set.
- Air quality model runs via MOVES2014b were conducted for the Ground Level Ozone standards and the PM2.5 standards in FY 2019. Project level analysis for CMAQ projects are completed in FY 2018, FY 2019, and FY 2020.
- Complete the 2018 and 2019 emission rate runs for Jefferson and Shelby Counties
- Complete 2019 Air Quality Conformity Determination Report for the 2045 Regional Transportation Plan and the FY 2020-2023 Transportation Improvement Program.
- Complete 2020 Annual CMAQ obligated project emission report

Proposed Work

- Involvement and cooperation with IAC to monitor air quality for the MPA
- Based on MOVES3, continue the air quality conformity analysis and the air quality conformity determination reporting to comply with changes in the regulations governing air quality and transportation planning
- Update input files of MOVES3 with local data collections when they become available
- Review and Development of CMAQ project emissions estimate methodologies
- Climate Change will be supported (see Task 4.4 for details)

Products

- Emission analysis updates
- An Amended Report that demonstrates the total projected emissions are within the allowable limits for any changes of the 2045 RTP and FY 2020-2023 TIP or other changes required.
- Emission rate data sets for Jefferson and Shelby Counties
- The Annual CMAQ obligated project emission report

Staffing

RPCGB, direct contract labor, and/or third-party contractors for activities, and organizations

Timeline for Proposed Work

- Ongoing activities throughout the fiscal year
- Annual CMAQ obligated project emission report – February 2022

Financial Responsibility

FHWA PL and FTA 5303 planning funds have been consolidated into one PL category

Total	<u>\$37,500</u>
PL	\$30,000
Local	\$7,500

5.1.2 Regional Transportation Plan Project Listings for Air Quality Conformity

Objectives

To amend the RTP as required, using additions and deletions to the program listings, and modifications to existing scopes of work and budgets.

Previous Work

- Monitor the proposed projects and changes of project scopes of work
- Identify capacity projects to be included in the conformity analysis
- Select capacity project based on the air quality conformity analysis years

Proposed Work

- Monitor capacity project changes
- Identify new highway capacity projects to be added to the 2045 RTP/TIP
- Monitor highway capacity project schedule changes crossing the conformity analysis years
- Review and document proposed new highway capacity projects constituting a Plan amendment that are subject to assignment to an air quality conformity year and a system level conformity determination

Products

- Capacity Project map updates
- Capacity Project Listing updates if there is any required change of 2045 RTP and FY 2020-2023 TIP

Staffing

RPCGB

Timeline for Proposed Work

Updated capacity project listing table when needed

Financial Responsibility

FHWA PL and FTA 5303 planning funds have been consolidated into one PL category

Total	<u>\$2,125</u>
PL	\$1,700
Local	\$ 425

5.2 Transportation Improvement Program (TIP)

Objectives

To develop a list of federally funded transportation projects to be completed by the ALDOT, the BJCTA, local governments, and other project sponsors. Monitor the Financial Constraint, the status of projects programmed (to include advancement) under the STPBH, and the CMAQ, and achievement of the federal Livability Principles and Indicators. Administer TIP amendment requests and ensure that the Transportation Improvement Program is advancing the goals, objectives, and priorities of the RTP.

Previous Work

- Coordinated TIP modifications and amendments with ALDOT and project sponsors
- Processed TIP amendments as needed
- Maintained TIP financial constraint
- Published a list of obligated projects for the previous fiscal year
- Monitored the status of CMAQ and STPBH projects
- Updated and refined on-line interactive TIP map
- Coordinated with ALDOT on setting goals, objectives, performance measures, and targets, as required by the FAST Act, for inclusion into the TIP

Proposed Work

- Process TIP amendments as needed
- Maintain TIP financial constraint
- Publish a list of obligated projects for previous fiscal year
- Monitor status of TAP, CMAQ and STPBH projects
- Identify and contact sponsors of inactive projects with a focus on projects over 10 years old
- Update and refine online interactive TIP map
- Coordinate with ALDOT on requirements from the FAST Act, for inclusion into the TIP
- Monitor the system performance report and make subsequent updates to evaluate the condition and performance of the transportation system in the Birmingham urbanized area with respect to the performance targets

Products

Annual Listing of Previous Year Obligated (Authorized) Projects
TIP Amendment resolutions

Staffing

RPCGB

Timeline for Proposed Work

Annual Obligations Listing – Fall 2021

Financial Responsibility

FHWA PL and FTA 5303 planning funds have been consolidated into one PL category

Total	<u>\$187,500</u>
PL	\$150,000
Local	\$37,500

5.2.1 Amend TIP Project Listings for Air Quality Conformity

Objectives

To amend the TIP, both annually and as required, in accordance with additions and deletions to the RTP project and program listings and modifications to existing scopes of work and budgets.

Previous Work

- Complete the CMAQ project emissions estimates
- Select existing and committed projects for plan updates

Proposed Work

- Calculate project emissions, if needed
- Monitor capacity project changes
- Identify new highway capacity projects to be added to the 2045 RTP/TIP
- Monitor highway capacity project schedule changes crossing the conformity analysis years
- Review and document proposed new highway capacity projects constituting a Plan amendment that are subject to assignment to an air quality conformity year and a system level conformity determination

Products

- Project listings
- Project location map updates
- Project emission benefit worksheets

Staffing

RPCGB

Timeline for Proposed Work

Ongoing activities throughout the fiscal year based on needs

Financial Responsibility

FHWA PL and FTA 5303 planning funds have been consolidated into one PL category

Total	<u>\$2,500</u>
PL	\$2,000
Local	\$ 500

5.3 Public Transportation Planning

Objectives

To promote a public transportation system that connects people to activities and services while encouraging economic development, especially in distressed and/or gap areas. Assist existing and potential public transportation providers with planning, service delivery, financing strategies, and evaluation of multimodal needs, deficiencies, and opportunities.

Previous Work

- Assisted City of Homewood with potential on-demand transportation
- Assisted City of Birmingham with implementation of BRT
- Coordinated with ALDOT and BJCTA on setting goals, objectives, performance measures, and targets required by the FAST Act
- Supported BJCTA with transit planning guidance and assistance
- Provided technical assistance to agencies, governments, and transportation providers

Proposed Work

- Coordinate with ALDOT and BJCTA on setting goals, objectives, performance measures, and targets required by the FAST Act
- Provide technical assistance to agencies, governments, and transportation providers
- Assist City of Birmingham with implementation of BRT
- Identify and evaluate local bus and paratransit needs
- Assist BJCTA with maintaining and modifying transit system and route maps
- Assist with coordination of elderly and disabled transportation

Products

- Data collection and analysis
- Route and system maps (as requested)

Staffing

RPCGB, transportation providers, contract labor and/or third-party contractors

Timeline for Proposed Work

Ongoing activities throughout the fiscal year

Financial Responsibility

FHWA PL and FTA 5303 planning funds have been consolidated into one PL category

Total	\$37,500
PL	\$30,000
Local	\$7,500

5.4 Active Transportation Planning

Objectives

To support regional connectivity and active transportation networks utilizing multimodal streets, greenways, parks, and other public greenspace by establishing short-term and long-term implementation strategies that address the federal Livability Principles.

Previous Work

- Updated B-ACTIVE website to reflect new trails and bike facilities within the region
- Created and published the 3rd Annual State of the Network Report
- Updated and maintained a GIS database of all federally funded bicycle and pedestrian facilities (existing and funded/proposed)
- Coordinated with Freshwater Land Trust to implement Red Rock Ridge and Valley Trail System in area plans
- Assisted Freshwater Land Trust in writing a RFP, reviewing response packages and selecting a planning consultant for a new priority trail implementation plan
- Utilized Strava data to map the most popular routes in the region
- Coordinated with and provided data to the City of Birmingham for bike and pedestrian projects
- Utilized Miovision camera for bike/ped counts on corridors with high activity
- Assisted member municipalities by providing active transportation facility GIS data when requested
- Provided technical assistance and data to consultant for Jefferson County Bike and Pedestrian Plan
- Provided active transportation data and mapping assistance to local municipalities
- Assisted the City of Birmingham in determining potential locations for micro-mobility corrals
- Participated in the local ULI Transportation Committee meetings

Proposed Work

- General Bicycle/Pedestrian Planning - respond to requests from member governments for assistance in planning bicycle and pedestrian facilities. Encourage cities to select projects from the B-Active Plan, the Red Rock Ridge and Valley Trail System or other local bike/ped plans when submitting projects for the Transportation Alternative Program (TAP) or CMAQ funding.
- Maintain the GIS database of federally funded pedestrian and bicycle facilities
- Birmingham Regional Active Transportation Plan (B-Active Plan) – Publish the Annual State of the Network Report; promote, support, and assist with implementation of the Plan
- Utilize Strava data to identify high use bicycle corridors
- Utilize the Miovision camera to collect bike/ped counts at various locations
- Local Planning Assistance – Regular coordination with nonprofit and advocacy groups to assist with the planning and development of trails, on-street bike facilities, and sidewalks:
 - Encourage cities to adopt Complete Streets policies and ordinances.
 - Assist municipalities with development of their own active transportation plans and facilities
- Education and Outreach Activities – Support ongoing programmatic activities and assist with outreach efforts. Coordinate regional events for Bike/Walk-to-Work Day and provide support to CommuteSmart Birmingham.
- Safety — Collect and analyze safety data for trends and develop options to mitigate concerns.

Products

- GIS database and maps illustrating bicycle and/or pedestrian projects
- Birmingham Regional Active Transportation Plan – Annual State of the Network Report
- Bike/ped traffic counts (using Miovision camera)

- B-Active Plan and Red Rock Ridge and Valley Trail System GIS shapefiles and maps for municipalities to use in implementation efforts
- Promotional materials and media interviews for annual Bike/Walk-to-Work Day events
- Education events, presentations, workshops, media outreach / interviews, and B-Active Plan website maintenance

Staffing

RPCGB, direct contract labor and/or third-party contractors for activities, and organizations

Timeline for Proposed Work

Ongoing activities throughout the fiscal year

Financial Responsibility

FHWA PL and FTA 5303 planning funds have been consolidated into one PL category

Total	<u>\$43,750</u>
PL	\$35,000
Local	\$8,750

5.5 Logistics Systems Planning

Objectives

To develop a regional intermodal goods movement transportation strategy that will identify improvement for freight movements and address the federal Livability Principles.

Previous Work

- Coordinated with ALDOT to fulfill the elements of the Statewide Freight Plan and the Freight Plan for the Birmingham region.
- Coordinated with ALDOT on setting goals, objectives, performance measures, and targets, as required by the FAST Act
- Completed supporting TDOT’s Freight and Goods Movement and Truck Parking Study in the greater Chattanooga Region. In January 2021, FHWA approved TDOT’s Final Report for Freight Movement along Freight Alley – The Greater Chattanooga Region. The report can be found at the following link: <https://www.tn.gov/content/dam/tn/tdot/freight-and-logistics/Consolidated%20NEP%20Final%20Report%20with%20Appendices.pdf>

Proposed Work

- Coordinate with ALDOT on setting goals, objectives, performance measures, and targets, as required by the FAST Act
- Stakeholder outreach and continuation of the Freight Transportation Advisory Committee (FTAC) composed of public and private sector representatives.
- Conduct studies with MPO partners along freight corridors to identify potential infrastructure improvements.
- Coordinate with economic development partners to identify land suitable for industrial park development.

Products

- Stakeholder outreach and continuation of the Freight Advisory Committee.
- Implementation of the recommendations in the Regional Freight Plan.
- Data updates.

Staffing

RPCGB, direct contract labor and/or third-party contractors for activities, and organizations

Timeline for Proposed Work

Ongoing activities throughout the fiscal year

Financial Responsibility

FHWA PL and FTA 5303 planning funds have been consolidated into one PL category

Total	<u>\$18,750</u>
PL	\$15,000
Local	\$3,750

5.6 Transportation System Performance Management and Monitoring

Objectives

To identify and/or develop appropriate measures to monitor the performance of the transportation system in accordance with the RTP goals and objectives, the Congestion Management Process (CMP), federal and state performance targets, and supporting/complementary planning functions; i.e., economic development or land use.

Previous Work

- Analyzed, summarized, and presented Impact of Covid-19 Shutdown on Traffic and Crashes
- Coordinate and manage CMP Committee
- Managed UAB contract
- Developed scope and tasks for interns
- Data monthly summary reports
- Bottleneck summary reports
- Completed US-31 Traffic Operations Pelham/Alabaster Study
- Coordinated with ALDOT on setting goals, objectives, performance measures, and targets, as required by the FAST Act concerning operations in the planning area.

Proposed Work

The CMP enables the Birmingham Metropolitan Planning Organization to comply with federal regulations for Transportation Management Areas having populations of 200,000 or more. It empowers the RPCGB, acting as the Birmingham MPO, to identify and/or develop performance metrics on which to monitor and compare congested conditions year after year. The information gathered is also used to inform the transportation decision-making process.

Transportation System Performance Monitoring and Reporting - Building from previous work and following the guidance of the U.S. Department of Transportation, the Birmingham MPO will continue to identify performance measures including analyzing and summarizing INRIX data. This will include an expansion of the ongoing coordination with ALDOT and their efforts with this work. The MPO will also endeavor to improve transportation system resiliency and reliability and continue to coordinate with ALDOT on setting goals, objectives, performance measures, and targets required by the FAST Act.

Trail Count Program - conduct bicycle and pedestrian counts along both regional and local off-road trails and on-street bicycle facilities. Data will be downloaded, tabulated, and assessed to evaluate usage and demand characteristics.

BJCTA will collect, maintain, and report on transit performance indicators to include metrics to support the performance measures for use in benchmarking the system's performance and informing both the MPO's and BJCTA's decision-making process.

Products

- Summaries of Covid-19 Impacts
- Data monthly summary reports
- Bottleneck summary reports
- Data processing for MioVision

Staffing

RPCGB, direct contract labor and/or third-party contractors for activities and organizations

Timeline for Proposed Work

Ongoing activities throughout the fiscal year

Financial Responsibility

FHWA PL and FTA 5303 planning funds have been consolidated into one PL category

Total	<u>\$394,250</u>
PL	\$85,000
STPBH	\$230,400
Local	\$78,850

5.7 Transportation Safety Planning

Objectives

To incorporate transportation safety into the planning process and improve transportation safety in the community. To support ALDOT's efforts to improve safety on the transportation system for motorized and non-motorized users.

Previous Work

- Presented ALDOT's Safety Performance Targets to the MPO and ensured they were formally adopted
- Coordinated with ALDOT on setting goals, objectives, performance measures, and targets, as required by the FAST Act, concerning safety in the MPA
- Complete four different Safety Studies in four different municipalities in the region.
- Expanded the education and outreach efforts of the Translational Research for Injury Prevention (TRIP) Laboratory at the University of Alabama at Birmingham (Dr. Despina Stavrinou, Assistant Professor of Psychology). The TRIP Lab will further educate young drivers about the consequences of distracted driving.
- Initiated four different Safety Studies in four different municipalities in the region.

Proposed Work

- Present ALDOT's Safety Performance Targets to the MPO and ensure they are formally adopted
- Support pedestrian and bicycle safety outreach campaigns, to include Public Service Announcements to educate non-motorists and motorists about behaviors impacting traveler safety
- Monitor the federal rulemaking on performance measures for safety
- Expand the education and outreach efforts of the Translational Research for Injury Prevention (TRIP) Laboratory at the University of Alabama at Birmingham (Dr. Despina Stavrinou, Assistant Professor of Psychology). The TRIP Lab will further educate young drivers about the consequences of distracted driving
- Coordinate with ALDOT on setting goals, objectives, performance measures, and targets required by the FAST Act for inclusion in the RTP, TIP, and other necessary documentation required by ALDOT
- Initiate Technical Assistance for Safety Project Planning (TASP) – see description below

Technical Assistance for Safety Project Planning (TASP)

In addition to the various efforts under the Safety Planning task, the RPCGB will assist local governments to identify and analyze roadways and intersections that have safety concerns. The following is list of tasks to be performed during the study:

Task 1: Assessment of Safety Data

- A. Assist the RPCGB with assessing safety conditions within the region by evaluating 5 years of data from the Alabama Critical Analysis Reporting Environment (CARE) for all municipalities within RPCGB.
- B. Assist the RPCGB with identifying data-driven hotspots and regional/local crash trends and prepare summary mapping and tables
- C. Contact MPA jurisdictions to share assessment information and discuss local safety conditions and concerns

Task 2: Outreach and Education

- A. Prepare content and conduct a group training session for MPA jurisdictions
- B. Core elements and benefits of data-driven safety planning
- C. Diagnosis: selecting sites and countermeasures

- D. Safety-APPLE program and HSIP
- E. Evaluating effectiveness of countermeasures
- F. Follow up with individual jurisdictions and document status/needs

Task 3: Provide Technical Assistance to jurisdictions on an as needed basis and maintain a contact log

- A. Site selection and application process for Safety-APPLE
- B. HSIP application process

The reports will not publish specific crash data and they will contain the appropriate clause as per ALDOT’s document titled *The Alabama Transportation Planner’s Guide to Safety Data Access and Documentation*, June 2016.

Notes:

1. The Alabama Department of Transportation – Environmental Technical Section (ALDOT ETS) shall remain the sole arbiter of environmental issues on state and federal projects in Alabama and must be consulted in all instances. ALDOT may seek consultation with the Federal Highway Administration (FHWA) on certain matters and will seek federal approval on a project only when all issues have been addressed.
2. Except for certain duties and responsibilities extended to the Birmingham MPO in writing and for a specific project and/or a consultant representing an MPO for a specific project, all other actions are the province of ALDOT ETS.

Products

- Set goals, objectives, performance measures, and targets; identify high accident locations; develop maps and reports concerning safety issues; and evaluate traffic, freight, bicycle, and pedestrian movements
- Progress reports from Translational Research for Injury Prevention (TRIP) Laboratory
- Safety Study reports and Technical Memoranda from the Technical Assistance for Safety Project Planning (TASP)

Staffing

RPCGB, direct contract labor and/or third-party contractors for activities, and organizations

Timeline for Proposed Work

Ongoing activities throughout the fiscal year

Financial Responsibility

FHWA PL and FTA 5303 planning funds have been consolidated into one PL category

Total	<u>\$212,500</u>
CRRSAA	\$175,000
PL	\$30,000
Local	\$7,500

5.8 Technical Assistance for Local Communities and Agencies

Objectives

To provide technical assistance, and/or support to local entities (governmental and non-governmental), and the public for any planning-related issues and requests that are either too small in scope or too short-lived to rise to the level of requiring a formal scope and budget.

To account for staff time spent addressing technical assistance and support requests as described above may include:

- Staff time to participate in technical review committees and task forces
- Developing monthly progress and budgetary reports
- Technical quality control
- Minor mapping updates
- Data/document request fulfillment
- Local government planning and zoning opinions

Previous Work

- Meeting attendance
- Assistance to local governments
- Data mining and report processing
- Document printing and delivery
- Printing maps
- Meeting facilitation/organization
- Local government planning and mapping assistance

Proposed Work

The RPCGB will assist local governments, small project sponsors, and non-governmental organizations by providing general planning support and technical assistance on an as-requested basis, and when financially and technically feasible. This includes:

- Attending City Council, local Planning Commission, neighborhood association, and other community and/or organizational meetings as requested
- Providing comments/input to reports, correspondence, and discussions on transportation related topics on specific transportation issues or items
- Local government planning and mapping assistance
- Data assistance

Products

- Assistance with project management and implementation as necessary
- Analyses, mapping, and planning assistance as requested
- Reports and memoranda related to local assistance as required.
- Attendance at meetings as requested.
- Attendance, if available, at workshops, conferences, and training to improve efficiency and skills under this work program task

Staffing

RPCGB

Timeline for Proposed Work

Ongoing activities throughout the fiscal year

Financial Responsibility

FHWA PL and FTA 5303 planning funds have been consolidated into one PL category

Total	<u>\$87,500</u>
PL	\$70,000
Local	\$17,500

TASK 6.0: PROGRAMS and TECHNICAL ASSISTANCE

6.1 CommuteSmart Program (Rideshare)

Objectives

To improve air quality and reduce traffic congestion by working with individuals and employers to reduce the number of drive-alone commutes.

Previous Work

Ongoing activities have been conducted for employer-based outreach programs, vanpool operations services, and park-and-ride lot development. An annual report documenting accomplishments was prepared and printed.

Proposed Work

- Outreach and Marketing Activities - Designed to increase the number of employers who encourage use of commuting alternatives and the number of participants in the program
- Turn-Key Vanpool Operations Services

Products

- Document emissions reduction estimates – March 2022
- Outreach and marketing of vanpool and rideshare programs - Ongoing
- Customer service support to program participants - Ongoing
- Commuter incentive programs such as GetGreen and CommuterClub - Ongoing
- Partner with companies with 150 or more employees - Ongoing
- Annual Report – March 2022

Staffing

RPCGB, direct contract labor and/or third-party contractors for activities, and other organizations

Timeline for Proposed Work

- Document emissions reduction estimates – March 2022
- Annual Report – March 2022

Financial Responsibility

Total	<u>\$1,300,000</u>
STPBH	\$1,300,000
Local	\$0

6.2 Building Communities Program

Objectives

To provide grants to local communities within the Birmingham MPA for projects, strategies, and services that support the Scope of the Planning Factors and meet the federal Livability Principles, including transportation and land use integration, economic vitality, safety and security, accessibility and mobility, environmental/air quality, and system preservation.

Previous Work

The following projects were completed in FY 2021:

- Birmingham Northside Southside Framework Plan
- Pelham Mixed-Use Zoning Districts
- Calera Comprehensive Plan
- Calera State Route 25 Corridor Overlay District
- Birmingham Southern Area Framework Plan

In February 2021, the RPCGB issued a RFQ and selected 6 consultant teams for On-call Planning Assistance to support the Building Communities Program. This assistance was needed after receiving a record number of requests from new Mayors for new Comprehensive Plan and Master Plan projects after municipal elections in the Fall of 2020.

Proposed Work

A negotiated process between the RPCGB and MPO governments is used to develop Building Communities projects consistent with eligible transportation and land use activities. Land use and transportation needs are identified, a determination is made for consistency with Building Communities' goals, a project scope of work and budget are developed, and a cost sharing agreement is made. The MPO will document projects in the semi-annual report.

Projects currently in progress in FY 2021 and scheduled to be completed in FY 2022 include:

- Harpersville Master Plan
- Mulga Master Plan, Zoning Ordinance and Zoning Map
- Irondale Comprehensive Plan Update
- Morris Comprehensive Plan
- Helena Comprehensive Plan (on-call consultant team will develop)
- Fairfield Master Plan Update (on-call consultant team will develop)

Projects anticipated to begin in FY 2022:

- Shelby County Comprehensive Plan
- Argo Comprehensive Plan

Products

Plans and programs suitable for implementation

Staffing

RPCGB, direct contract labor and/or third-party contractors for activities, and organizations

Timeline for Proposed Work

Ongoing activities throughout the fiscal year

Financial Responsibility

Total	<u>\$1,000,000</u>
STPBH	\$800,000
Local	\$200,000

6.3 5310 Grant Program

Objectives

To competitively award and distribute Federal Transit Administration (FTA) grant funding for the purpose of improving mobility for seniors and individuals with disabilities and ensure subrecipients' compliance with regulations.

Previous Work

- Created applications for funding in TrAMS
- Drafted and secured contracts with subrecipients
- Assisted subrecipients with procurement and distributed funding
- Drafted RFPs for regular 5310 apportionments and special funding under CRRSAA and ARP
- Presented funding recommendations to MPO and ensured projects were included in TIP and STIP
- Drafted Program of Projects (POP) and Program Management Plan (PMP)

Proposed Work

- Draft and publish a request for projects
- Present funding recommendations to MPO and ensure projects are included in TIP and STIP
- Create applications for funding in TrAMS
- Contract with subrecipients, oversee procurement, distribute funding, and ensure compliance with regulations
- Draft POP and Update PMP as needed

Products

List of awards for grant funding
Program of Projects

Staffing

RPCGB

Timeline for Proposed Work

Ongoing activities throughout the fiscal year

Financial Responsibility

FHWA PL and FTA 5303 planning funds have been consolidated into one PL category

Total	<u>\$110,000</u>
FTA 5310	\$110,000
Local	\$0

TASK 7.0: ADA

7.1 Compliance

Objectives

The RPCGB, on behalf of the Birmingham Metropolitan Planning Organization (MPO), will continue to provide technical assistance to various cities and counties within the MPA to perform ADA Self Evaluations, ADA Transition, or ADA Access Plans in accordance with the Americans with Disabilities Act of 1990 and Section 504 of the Rehabilitation Act of 1973.

Previous Work

- Documented the status of the municipalities and ADA Coordinators on a tracking table
- Assisted municipalities with their Self Evaluations, Transition Plans, or Access Plans (only assistance will be provided; no plan development)
- Performed field reviews as necessary to provide research and recommendations the municipalities
- ADA Plan for MPO
- Sent letters to all municipalities that had not shown progress on their ADA plan
- Coordinated with ALDOT and FHWA on ADA efforts

Proposed Work

- Assist municipalities including a new RFP and consultant selection process
- Document the status of the municipalities and ADA Coordinators on tracking table
- Make recommendations for those municipalities that do not have a Self-Evaluation or Transition Plan
- Assist municipalities with their Self Evaluations, Transition Plans, or Access Plans (only assistance will be provided; no plan development)
- Perform field reviews as necessary to provide research and recommendations
- Coordinate with ALDOT and FHWA

Products

- ADA Tracking Table including status

Staffing

RPCGB, direct contract labor, and/or third-party contractors for activities, and organizations

Timeline for Proposed Work

Ongoing activities throughout the fiscal year

Financial Responsibility

FHWA PL and FTA 5303 planning funds have been consolidated into one PL category

Total	<u>\$26,250</u>
PL	\$21,000
Local	\$5,250

APPENDICES

LIST OF ACRONYMS

ADEM	Alabama Department of Environmental Management
ALDOT	Alabama Department of Transportation
APCA	Alabama Partners for Clean Air
BJCTA	Birmingham Jefferson County Transit Authority
CMAQ	Congestion Mitigation Air Quality
CPG	FHWA and FTA Consolidation of Planning Fund
CTP	Comprehensive Transportation Plan
EPA	Environmental Protection Agency
FAST Act	Fixing America's Surface Transportation Act
FHWA	Federal Highway Administration
FTA	Federal Transit Administration
GHG	Greenhouse Gases
GIS	Geographic Information System
HSCTP	Human Services Coordinated Transportation Plan
IAC	Interagency Consultation
JCDH	Jefferson County Department of Health
LAP	Language Assistance Plan
LEP	Limited English Proficiency
LRTP	Long Range Transportation Plan
MAP-21	Moving Ahead for Progress in the 21 st Century Act
MOVES2014a	Motor Vehicle Emissions Simulator
MPA	Metropolitan Planning Area
MPO	Metropolitan Planning Organization
NEPA	National Environmental Policy Act of 1969
PL	Federal Highway Administration Planning Funds
RTP	Regional Transportation Plan
SLS	State or Local Share
SRTS	Safe Routes to School
STIP	State Transportation Improvement Program
STP	Surface Transportation Program
STPBH	Surface Transportation Program for Birmingham
TAP	Transportation Alternatives Program
TAZ	Traffic Analysis Zones
TIP	Transportation Improvement Program
USDOT	U.S. Department of Transportation
VMT	Vehicle Miles Traveled

**TABLE 1
UNIFIED PLANNING WORK PROGRAM FY 2022
(Organizational Responsibility) - Federal Dollars Only**

TASKS		PL-FHWA/FTA	RPC	STATE PLANNING & RESEARCH (SPR)	CRRSAA	FTA 5310	CONTRACTOR		TOTAL FEDERAL
1.0 ADMINISTRATION									
1.1	MPO Administration	\$223,117	\$223,117						\$223,117
1.2	Unified Planning Work Program	\$15,000	\$15,000						\$15,000
1.3	Capital and Operating Purchases	\$86,532					\$500	3D Analyst 2.3	\$86,532
							\$8,000	Adobe Creative Cloud 2.2	
							\$9,900	ArcEditor CU/SU 2.3	
							\$5,000	ArcGIS Online/ArcGIS Pro 2.3	
							\$3,000	ArcInfo CU 2.3	
							\$5,000	ArcServer Enterprise 2.3	
							\$2,700	ArcView CU 2.3	
							\$700	ArcView SU 2.3	
							\$1,400	CommunityViz 2.2	
							\$3,500	Equipment for Planning 2.3	
							\$1,000	ESRI Community Analyst 2.3	
							\$15,000	HP DesignJet Printer/Plotter 2.3	
							\$8,000	InfoGroup 2.1	
							\$2,500	LRS Data Acquisitions 2.2	
							\$30,000	Aerial Imagery, LiDAR, & Data 2.3	
							\$1,100	Maxwell Render Full Suite 6.2	
							\$3,000	MioVision Data Processing 5.6	
							\$500	Network Analyst 2.3	
							\$1,100	SketchUp Pro 6.2	
							\$5,000	Southern Exposure Information 2.2	
							\$500	Spatial Analyst 2.3	
							\$500	Woods and Poole 2.2	
							\$265	X Tools Pro 2.3	
							\$86,532	(Total x .8)	
1.4	Education and Training	\$60,000	\$60,000						\$60,000
2.0 PLANNING INFORMATION									
2.1	Data Collection and Management	\$100,000	\$70,000				\$30,000	Third Party Contractor	\$100,000
2.2	Data Analysis and Forecasting	\$20,000	\$20,000						\$20,000
2.3	Geographic Information Systems	\$50,000	\$30,000				\$20,000	Third Party Contractor	\$50,000
2.4	Model Development Program	\$100,000	\$20,000				\$80,000	Third Party Contractor	\$100,000
3.0 PUBLIC INVOLVEMENT									
3.1	Public Involvement and Outreach	\$9,500	\$9,500						\$9,500
4.0 ENVIRONMENTAL PROCESS PLANNING									
4.1	Air Quality Planning		\$150,000				\$630,000	Alabama Partners for Clean Air	\$780,000
4.2	Environmental Consultation Process	\$1,500	\$1,500						\$1,500
4.3	Advanced Planning, Programming, and Logical Engineering (APPLE)		\$25,000				\$375,000	Third Party Contractor	\$400,000
4.4	Climate Change	\$1,500	\$1,500						\$1,500

**TABLE 1
UNIFIED PLANNING WORK PROGRAM FY 2022
(Organizational Responsibility) - Federal Dollars Only**

TASKS	PL-FHWA/FTA	RPC	STATE PLANNING & RESEARCH (SPR)	CRRSAA	FTA 5310	CONTRACTOR	TOTAL FEDERAL
5.0 TRANSPORTATION SYSTEMS							
5.1 Regional Transportation Plan	\$145,000	\$130,000				\$15,000 Third Party Contractor	\$145,000
5.1.1 Air Quality Conformity Analysis and Reporting	\$30,000	\$30,000					\$30,000
5.1.2 Regional Transportation Plan Project Listing for Air Quality Conformity	\$1,700	\$1,700					\$1,700
5.2 Transportation Improvement Program (TIP)	\$150,000	\$150,000					\$150,000
5.2.1 Amend TIP Project Listings for Air Quality Conformity	\$2,000	\$2,000					\$2,000
5.3 Public Transportation Planning	\$30,000	\$30,000					\$30,000
5.4 Active Transportation Planning	\$35,000	\$35,000					\$35,000
5.5 Logistics Systems Planning	\$15,000	\$15,000					\$15,000
5.6 Transportation System Performance Management and Monitoring	\$85,000	\$195,400				\$120,000 Third Party Contractor	\$315,400
5.7 Transportation Safety and Security Planning	\$30,000	\$20,000		\$175,000		\$185,000 Third Party Contractor	\$205,000
5.8 Technical Assistance for Local Communities and Agencies	\$70,000	\$20,000				\$50,000 Third Party Contractor	\$70,000
6.0 PROGRAMS AND TECHNICAL ASSISTANCE							
6.1 CommuteSmart Program (Rideshare)		\$685,000				\$400,000 Enterprise \$150,000 Marketing/Media \$65,000 Third party contractor	\$1,300,000
6.2 Building Communities Program		\$500,000				\$300,000 Third party contractor	\$800,000
6.3 FTA Section 5310 Grant Administration					\$110,000		\$110,000
7.0 ADA COMPLIANCE							
7.1 ADA Compliance	\$21,000	\$6,000				\$15,000 Third party contractor	\$21,000
TOTALS	\$1,281,849	\$2,445,717	\$0	\$175,000	\$110,000	\$2,521,532	\$5,077,249
PL = \$964,521 (annual FY 2022 mark) + \$317,328 carryover from FY 2020 and FY 2021 = \$1,281,849							
FHWA PL and FTA 5303 planning funds have been consolidated into the PL-FWA/FTA category							

**TABLE 2
UNIFIED PLANNING WORK PROGRAM
FY 2022
(Funding Sources)**

TASKS		PL-FHWA/FTA:SLS	STP/CRRSAA:SLS	FTA 5310:SLS	CMAQ: SLS	ALDOT SUPPORT:SLS	TOTAL FEDERAL:SLS
1.0 ADMINISTRATION							
1.1	MPO Administration	\$223,117	\$55,779				\$223,117 \$55,779
1.2	Unified Planning Work Program	\$15,000	\$3,750				\$15,000 \$3,750
1.3	Capital and Operating Purchases	\$86,532	\$21,633				\$86,532 \$21,633
1.4	Education and Training	\$60,000	\$15,000				\$60,000 \$15,000
2.0 PLANNING INFORMATION							
2.1	Data Collection and Management (\$27,328**)	\$100,000	\$25,000				\$100,000 \$25,000
2.2	Data Analysis and Forecasting	\$20,000	\$5,000				\$20,000 \$5,000
2.3	Geographic Information Systems (\$15,000**)	\$50,000	\$12,500				\$50,000 \$12,500
2.4	Model Development Program (\$55,000**)	\$100,000	\$25,000				\$100,000 \$25,000
3.0 PUBLIC INVOLVEMENT							
3.1	Public Involvement and Outreach	\$9,500	\$2,375				\$9,500 \$2,375
4.0 ENVIRONMENTAL PROCESS PLANNING							
4.1	Air Quality Planning				\$780,000	\$195,000	\$780,000 \$195,000
4.2	Environmental Consultation Process	\$1,500	\$375				\$1,500 \$375
4.3	Advanced Planning, Programming, and Logical Engineering (APPLE)			\$400,000	\$100,000		\$400,000 \$100,000
4.4	Climate Change	\$1,500	\$375				\$1,500 \$375
5.0 TRANSPORTATION SYSTEMS							
5.1	Regional Transportation Plan	\$145,000	\$36,250				\$145,000 \$36,250
5.1.1	Air Quality Conformity Analysis and Reporting	\$30,000	\$7,500				\$30,000 \$7,500
5.1.2	Regional Transportation Plan Project Listing for Air Quality Conformity	\$1,700	\$425				\$1,700 \$425
5.2	Transportation Improvement Program (TIP)	\$150,000	\$37,500				\$150,000 \$37,500
5.2.1	Amend TIP Project Listings for Air Quality Conformity	\$2,000	\$500				\$2,000 \$500
5.3	Public Transportation Planning	\$30,000	\$7,500				\$30,000 \$7,500
5.4	Active Transportation Planning	\$35,000	\$8,750				\$35,000 \$8,750
5.5	Logistics Systems Planning	\$15,000	\$3,750				\$15,000 \$3,750
5.6	Transportation System Performance Management and Monitoring (\$130,000**)	\$85,000	\$21,250	\$230,400	\$57,600		\$315,400 \$78,850
5.7	Transportation Safety and Security Planning (\$50,000**)	\$30,000	\$7,500	\$175,000	\$0		\$205,000 \$7,500
5.8	Technical Assistance for Local Communities and Agencies (\$40,000**)	\$70,000	\$17,500				\$70,000 \$17,500
6.0 PROGRAMS AND TECHNICAL ASSISTANCE							
6.1	CommuteSmart Program (Rideshare)			\$1,300,000	\$0		\$1,300,000 \$0
6.2	Building Communities Program			\$800,000	\$200,000		\$800,000 \$200,000
6.3	FTA Section 5310 Administration			\$110,000	\$0		\$110,000 \$0
7.0 ADA COMPLIANCE							
7.1	ADA Compliance	\$21,000	\$5,250				\$21,000 \$5,250
STATE PLANNING AND RESEARCH FUNDING (SPR)							
						\$108,000 \$27,000	\$108,000 \$27,000
TOTALS		\$1,281,849	\$320,462	\$2,905,400	\$357,600	\$110,000 \$0	\$780,000 \$195,000 \$108,000 \$27,000 \$5,185,249 \$900,062

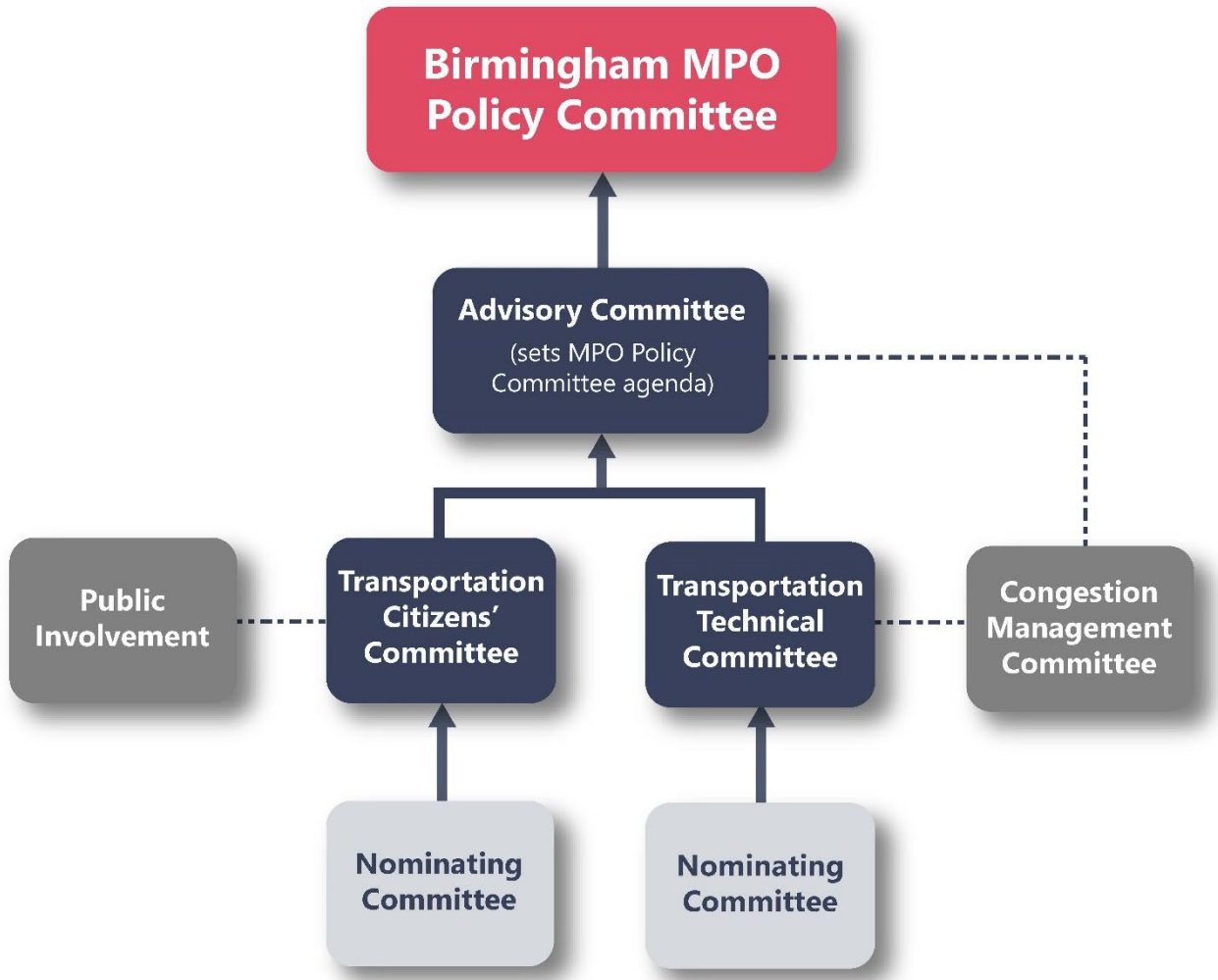
PL = \$964,521 (annual FY 2022 mark) + \$317,328 carryover from FY 2020 and FY 2021 = \$1,281,849

** Indicates carryover funding by task from FY 2021. All carryover is for contracts with consultants from FY 2021.

FHWA PL and FTA 5303 planning funds have been consolidated into the PL-FHWA/FTA category

MPOs may carry over funds for 3 years. The oldest unexpended funds will be returned to the funding pool for reallocation.

STRUCTURE OF THE BIRMINGHAM MPO



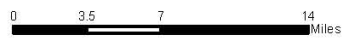
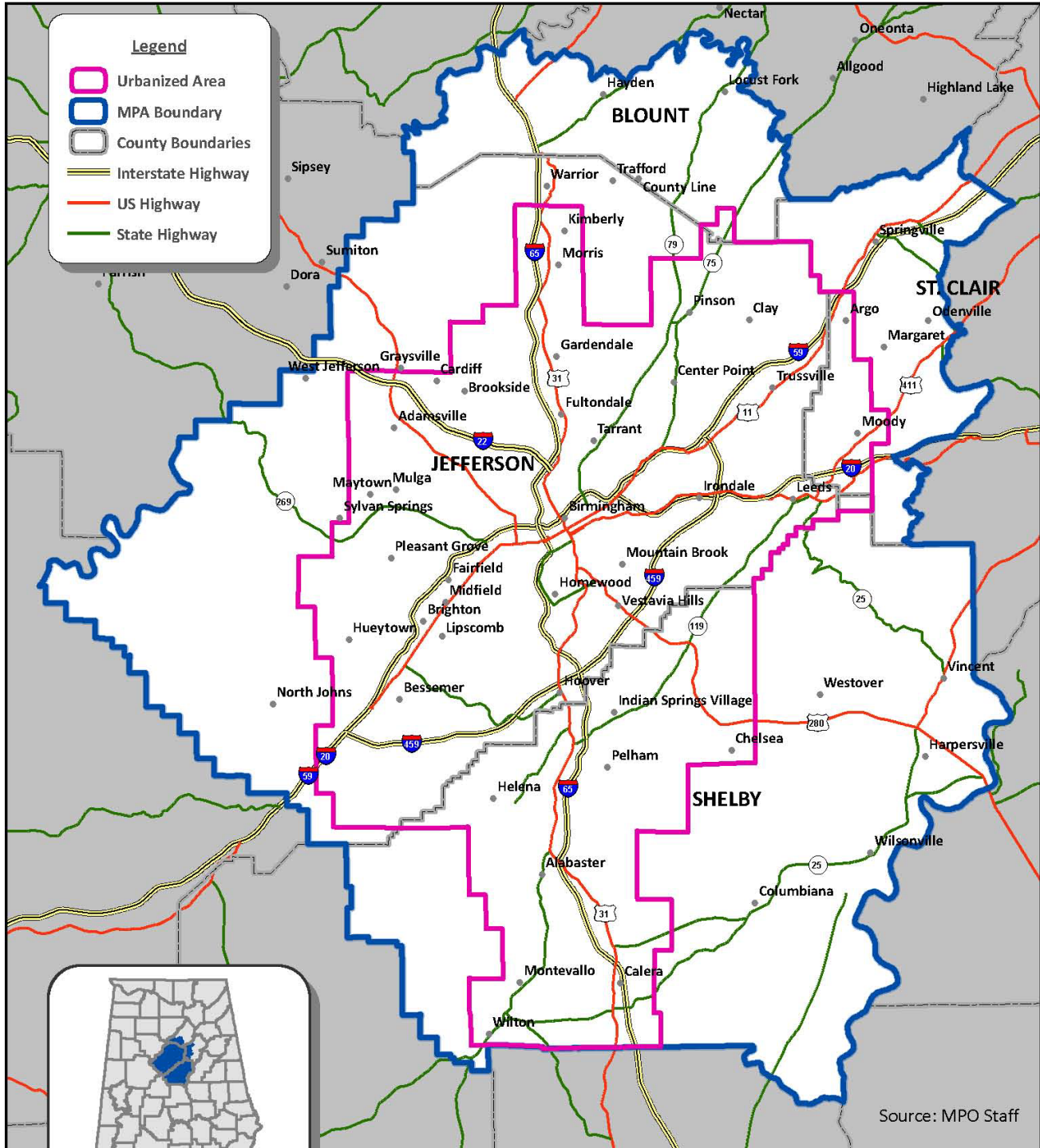
The staff of the Regional Planning Commission of Greater Birmingham also serves as staff to the Birmingham MPO.

- Decision Makers
- Voting Committees
- Formal Subcommittees
- Ad Hoc Advisory Committees
- Formal Connections
- Ad Hoc Connections

METROPOLITAN PLANNING AREA/TRANSPORATION MANAGEMENT AREA MAP

BIRMINGHAM MPO AREA

METROPOLITAN PLANNING AREA AND URBANIZED AREA BOUNDARY



*Based on 2010 Census data.
May, 2013 - G:\ProjectData\MPO\MPA
2010MPA0411.mxd

PLANNING FACTORS

1. Support the economic vitality of the metropolitan area, especially by enabling global competitiveness, productivity, and efficiency
2. Increase the safety of the transportation system for motorized and nonmotorized users
3. Increase the security of the transportation system for motorized and nonmotorized users
4. Increase accessibility and mobility of people and freight
5. Protect and enhance the environment, promote energy conservation, improve the quality of life, and promote consistency between transportation improvements and state and local planned growth and economic development patterns
6. Enhance the integration and connectivity of the transportation system across and between modes for people and freight
7. Promote efficient system management and operation
8. Emphasize the preservation of the existing transportation system
9. Improve the resiliency and reliability of the transportation system and reduce or mitigate stormwater impacts of surface transportation
10. Enhance travel and tourism

LIVABILITY INDICATORS

1. Provide more transportation choices

Develop safe, reliable, and economical transportation choices to decrease household transportation costs, reduce our nation's dependence on foreign oil, improve air quality, reduce greenhouse gas emissions, and promote public health.

Performance Indicator: **Mode Share** – percent of travelers using different travel modes

2. Promote equitable, affordable housing

Expand location- and energy-efficient housing choices for people of all ages, incomes, races, and ethnicities to increase mobility and lower the combined cost of housing and transportation.

Performance Indicator: **Jobs/Housing Balance** – total number of jobs/total housing by area

3. Enhance economic competitiveness

Improve economic competitiveness through reliable and timely access to employment centers, educational opportunities, services, and other basic needs by workers, as well as expanded business access to markets.

Performance Indicator: **Travel Time Index** – congested versus free-flow travel time

4. Support existing communities

Target federal funding toward existing communities—through strategies like transit-oriented, mixed-use development and land recycling—to increase community revitalization and the efficiency of public works investments and to safeguard rural landscapes.

Performance Indicator: **Percentage of Projects that Include Air Quality Mitigation** -

5. Coordinate and leverage federal policies and investment

Align federal policies and funding to remove barriers to collaboration, leverage funding, and increase the accountability and effectiveness of all levels of government to plan for future growth, including making smart energy choices such as locally generated renewable energy.

Performance Indicator: **Project Funding Diversity** – percent of transportation projects utilizing multiple funding sources (federal, state, local)

6. Value communities and neighborhoods

Enhance the unique characteristics of all communities by investing in healthy, safe, and walkable neighborhoods—rural, urban, or suburban.

Performance Indicator: **Partnerships and Public Involvement** – number of partnerships and documentation of public involvement activities

CURRENT AND POTENTIAL PLANNING STUDIES

Completed and Ongoing Studies since October 2014 (sorted by sponsor then by title)

Sponsor	Title
ALDOT	Lakeshore Extension - completed April 2020
Alabaster	Alabaster Comprehensive Plan - completed March 2016
Alabaster	New Trails and Sidewalks Study - ongoing
Alabaster	SR 119 Overlay District and Design Guidelines - completed March 2017
Argo	Argo Traffic Study - completed April 2018
Birmingham	20th Street Pedestrian Mall - completed January 2018
Birmingham	Avenue F Bridge Study - completed November 2019
Birmingham	Birmingham City Center Master Plan - completed March 2020
Birmingham	Built Environmental & Health Project (SHAPE BHAM) - completed November 2017
Birmingham	Built Environment and Health Expansion Project (SHAPE BHAM EXPANSION PROJECT) - completed Dec 2019
Birmingham	Citywide Transportaton Plan - completed 2021
Birmingham	Crestwood Blvd Corridor Study - ongoing
Birmingham	Eastern Area Framework Plan - completed August 2018
Birmingham	Grants Mill Road Extension Study - ongoing
Birmingham	North Birmingham Framework Plan - March 2015
Birmingham	Northeastern Area Framework Plan - completed July 2017
Birmingham	Northside / Southside Framework Plan - completed early 2021
Birmingham	Pavement Management Plan - ongoing
Birmingham	Pratt - Ensley Framework Plan - completed September 2018
Birmingham	Southern Area Framework Plan - completed September 2021
Birmingham	Southwest Area Framework Plan - completed July 2017
Birmingham	Titusville Framework Plan - completed February 2015
Birmingham	Vulcan Greenway Study - completed March 2018
Birmingham	Western Area Framework Plan - completed May 2015
BJCTA	Commuter Rail Study - completed August 2019
BJCTA	Route Optimization Plan - ongoing
Calera	Calera Comprehensive Plan - completed June 2021
Calera	SR 25 Corridor Overlay District - completed April 2021
Calera	SR 25 Relocation Study - completed September 2019
Center Point	Center Point Comprehensive Plan - completed April 2017
Center Point	Zoning Ordinance and Sign Ordinance Updates - completed July 2019
Chelsea	Chelsea Comprehensive Plan - completed July 2020
Chelsea	Chelsea Highway 280 Overlay District - completed February 2019
Chelsea	Chesser Drive Study - completed March 2021
Chelsea	US 280 Traffic Operations Study - ongoing
Gardendale	Gardendale Comprehensive Plan - completed October 2014
Gardendale	Gardendale New Road Study - completed February 2018
Harpersville	Harpersville Town Master Plan - ongoing
Helena	Helena Comprehensive Plan - ongoing
Helena	Old Town Pedestrian Improvements Study - ongoing
Helena	School Intersections - completed August 2017
Homewood	Citywide Sign Code Update - completed December 2019
Homewood	Central Avenue Study - completed May 2020
Homewood	Downtown Master Plan and Zoning Update - Master Plan completed Oct 2018; zoning ongoing
Homewood	Hollywood Blvd/US-280 Intersection Study - completed July 2018
Hoover	Bicycle/Pedestrian Plan - completed July 2019
Hoover	Hoover Comprehensive Plan - completed July 2019
Irondale	Irondale Comprehensive Plan - completed April 2016
Irondale	Irondale Comprehensive Plan Update - ongoing
Jefferson County	Acton Road Corridor Study - completed May 2017
Jefferson County	Bicycle/Pedestrian Plan - ongoing
Jefferson County	Cahaba River Road Study - completed April 2019

Sponsor	Title
Jefferson County	Crosshaven Drive Corridor Study - completed January 2019
Montevallo	Montevallo Comprehensive Plan - completed July 2020
Morris	Morris Comprehensive Plan - ongoing
Mountain Brook	Mountain Brook Sidewalks Study - completed August 2017
Mountain Brook	Mountain Brook Traffic Study - completed August 2018
Mountain Brook	Overton Road Corridor Study - ongoing
Mulga	Mulga Town Master Plan and new Zoning Ordinance - ongoing
Pelham	Mixed-Use Zoning Districts - completed December 2020
Pelham	New Roads Study - ongoing
Pelham	Pelham Comprehensive Plan - completed February 2020
Pelham	Pelham Greenway - completed April 2016
RPCGB	Active Transportation Plan - completed March 2019
RPCGB	Regional Freight Plan - completed March 2019
RPCGB	Roadway Ownership/Maintenance Study - ongoing
RPCGB	Safety Study - SR-119/Fulton Springs Road - completed November 2020
RPCGB	Travel Demand Model Enhancement Study - ongoing
RPCGB	US-31 Operations Analysis from Amphitheater Rd. in Pelham to S. Colonial Pkwy. in Alabaster - completed 2021
Shelby County	Bicycle/Pedestrian Plan - completed 2018
Shelby County	CR-47 Intersection Improvements - completed September 2017
Shelby County	Dunnivant Valley Trail - completed October 2017
Shelby County	Shelby County Comprehensive Plan - ongoing
Shelby County/Columbiana	SR-70 Corridor Study - Columbiana - ongoing
St. Clair County	Springville Traffic Study - completed December 2018
St. Clair County	US-411 Interchange Study - ongoing
Trussville	Chalkville Road/Chalkville Mtn. Rd Corridor Study - ongoing
UAB	UAB – North South Streets Study - completed March 2019
UAB	UAB – Road Diets - completed September 2016
Vestavia Hills	Traffic Study - completed July 2019

Potential Studies

Sponsor	Title
Alabaster	US-31/SR-119/Railroad Crossing Study
Argo	Argo Comprehensive Plan
Bessemer/BJCTA	Transit Station
Birmingham	16th Street Study
Birmingham	Green Streets
Homewood	Edgewood Study
Odenville	Intersection Study
RPCGB	Intelligent Transportation Systems Inventory
RPCGB	Transportation Systems Management and Operations (TSMO) Plan Update
St. Clair County	St. Clair County Railroad Crossing Study

Statewide Plans (www.dot.state.al.us)

Sponsor	Title
ALDOT	Updated Alabama Rail Plan
ALDOT	Statewide Airport System Plan
ALDOT	Statewide Bicycle and Pedestrian Plan
ALDOT	Statewide Freight Plan
ALDOT	Statewide Management Plan
ALDOT	Statewide Transportation Plan
ALDOT	Statewide Public Involvement Plan
ALDOT	Transportation Asset Management Plan
ALDOT	Transit Asset Management Plan

Note: for more information on any of these studies, contact the project sponsor or the RPCGB