

# **Unified Planning Work Program**

**for the  
Birmingham Metropolitan  
Planning Organization**

**FY 2024**

**October 2023 – September 2024**

This document is posted at  
<http://www.rpcgb.org/upwp/>

For further information, please contact  
Scott Tillman, Director of Planning and Operations  
Regional Planning Commission of Greater Birmingham (RPCGB)  
Two 20<sup>th</sup> Street North, Suite 1200  
Birmingham, AL 35203

Email: [stillman@RPCGB.org](mailto:stillman@RPCGB.org)

Adopted: August 9, 2023

## **Regional Planning Commission of Greater Birmingham**

### *Staff to the MPO*

Charles Ball, Executive Director  
Scott Tillman, Director of Planning and Operations  
Michael Kaczorowski, Principal Planner  
Lindsay Puckett, Principal Planner  
Harry He, Transportation Engineer  
Ricky Pan, Transportation Engineer  
Brett Isom, GIS Manager  
Laurel Land, Senior Planner  
Lisa Smith, CommuteSmart/APCA Program Manager

This UPWP was prepared as a cooperative effort of the U.S. Department of Transportation (USDOT), Federal Highway Administration (FHWA), Federal Transit Administration (FTA), Alabama Department of Transportation (ALDOT), and local governments in partial fulfillment of requirements in Title 23 USC 134 and 135, and the Infrastructure Investment and Jobs Act (IIJA), Section 11201, November 2021. The contents of this document do not necessarily reflect the official views or policies of the U.S. Department of Transportation.

The Regional Planning Commission of Greater Birmingham (RPCGB) operates its programs and services without regard to race, color, and/or national origin in accordance with Title VI of the Civil Rights Act.

## TRANSPORTATION CITIZENS COMMITTEE 2023

*Chair:* Phillip Wiedmeyer

*Vice-Chair:* Willie Osborne

Last Name	First Name	Membership District
Bivins	Tyrome	Shelby County
Brown	Anna	City of Birmingham
Cassaday	Bill	North/Northwest Jefferson County
Davis	Michael	South/Southeast Jefferson County
Dye	Jackie	Shelby County
Ferrell	Butch	City of Birmingham
Giddens	Harry	City of Birmingham
Grey	Beatrice	South/Southeast Jefferson County
Ludwig	Bruce	South/Southeast Jefferson County
Northrop	John	South/Southeast Jefferson County
Osborne	Willie	City of Birmingham
Owen	Pittman	City of Birmingham
Parker	Ryan	South/Southeast Jefferson County
Richardson	Robert	Shelby County
Staley	Michael	South/Southeast Jefferson County
Stokes	Sarah	South/Southeast Jefferson County
Truss	Ronald	City of Birmingham
Wiedmeyer	Phillip	South/Southeast Jefferson County

## TRANSPORTATION TECHNICAL COMMITTEE 2023

Chair: Scott Holladay  
 Vice Chair: Christopher Brady

Last Name	First Name	Representing
Abel	Richard	ClasTran
Alexander	Colin	City of Birmingham Traffic Engineering
Atkinson	Brian	UAB Parking and Transportation Services
Bailey	Clark	At-Large
Baldwin	Nan	Birmingham Business Alliance (BBA) (non-voting)
Brady	Christopher	City of Vestavia Hills
Burgess	Matthew	At-Large
Caudle	Richard	At-Large
Cavusoglu	Ozge	At-Large
Coggin	David	At-Large
Dahlke	Dan	St. Clair County Engineer
Darden	Richard	At-Large
Dawkins	Greg	At-Large
Dawson	Aaron	Federal Highway Administration (FHWA) (non-voting)
Finley	Nicole	Federal Transit Authority (FTA) (non-voting)
Fleming	David	REV Birmingham
Gambrel	Tim	City of Birmingham Chief Planner
Gore	Ron	ADEM Air Division Chief (non-voting)
Hale	Doug	Bicycle/Pedestrian
Hall	Alacyia	Traffic Safety
Haynes	Steve	ALDOT Birmingham Area
Hester	Christie	Shelby County Development Services
Holladay	Scott	Shelby County Highway Dept
Howard	Darrell	At-Large
Jones	Steven	At-Large
Lacke	Matt	Jefferson County Dept of Health
Lawlor	Elizabeth	Railroad Industry
Leonard	DeJarvis	ALDOT East Central Region
Lindsey	Brad	ALDOT Local Transportation Bureau (non-voting)
Lowe	Greg	At-Large
Murphy	J.T.	At-Large
Nicholson	Chris	Jefferson County Dept of Roads and Trans
Peak	Wytangy	BJCTA
Perry	Blair	At-Large
Peterson	Doug	At-Large
Proctor	Sherri	City of Alabaster
Reeves	Chris	City of Hoover
Rogers	Becky	At-Large
Seagle	Doug	At-Large
Smith	Cale	City of Homewood
Stewart	Dustin	Blount County Engineer
Strickland	Keith	At-Large
Sullivan	Andrew	At-Large
Templeton	Brian	UAB Campus Planning
Tucker	Brett	At-Large
Vermillion	Rob	At-Large

## MPO POLICY COMMITTEE 2023

Chair: Stan Hogeland  
 Vice Chair: Fred Hawkins  
 Secretary: Bobby Scott

\*Advisory Committee Member

Title	Last Name	First Name	Representing
Mr.	Al-Dakka*	Jehad	Jefferson County - Hoover
Councilor	Alexander*	Wardine	City of Birmingham
Mr.	Ammons	Steve	Unincorporated Jefferson County
Mr.	Armstrong*	Allen	Blount County Public Transportation
Mr.	Bartlett*	Mark	Federal Highway Administration (non-voting)
Mr.	Bittas	Andrè	Shelby County - Pelham
Mayor	Brasseale	Jerry	Jefferson County Municipalities - Pleasant Grove
Mayor	Brocato	Frank	Jefferson County Municipalities - Hoover
Ms.	Carter*	Heather	Unincorporated Jefferson County
Mayor	Choat*	Buddy	Jefferson County Municipalities - Trussville
Mayor	Cochran	Joe	Jefferson County Municipalities - Pinson
Mayor	Curry*	Ashley	Jefferson County Municipalities – Vestavia Hills
Mayor	Davis	Julio	Jefferson County Municipalities - Graysville
Mr.	Eddington	Mike	City of Birmingham
Mr.	Fowler	James	City of Birmingham
Mr.	Graham*	Stephen	St. Clair County
Mr.	Hanner	Gary	St. Clair County
Mr.	Hatcher	Chris	City of Birmingham
Mr.	Hawkins	Fred	Shelby County - Alabaster
Ms.	Hester*	Christie	Shelby County
Mayor	Hogeland*	Stan	Jefferson County Municipalities – Gardendale
Mayor	Holcomb	Larry	Jefferson County Municipalities - Fultondale
Mr.	Holladay*	Scott	Shelby County
Mr.	Jacks*	Tim	St. Clair County Public Transportation
Commissioner	Knight*	Joe	Unincorporated Jefferson County
Mr.	Leonard*	DeJarvis	ALDOT East Central Region
Mr.	Lindsey*	Brad	Alabama Department of Transportation (non-voting)
Mr.	Markert*	Cal	Unincorporated Jefferson County
Mr.	Martin	Mac	Jefferson County - Hoover
Mr.	Mitchell	Chaz	City of Birmingham
Councilor	O'Quinn*	Darrell	City of Birmingham
Mayor	Perkins	Theoangelo	Shelby County - Harpersville
Mayor	Ragland	Johnny	Jefferson County Municipalities - Warrior
Mr.	Reeves	Chris	Shelby County - Hoover
Mayor	Richardson	Gary	Jefferson County Municipalities - Midfield
Senator	Roberts	Dan	State of Alabama – State Senator (non-voting)
Mayor	Scott	Bobby	Jefferson County Municipalities – Center Point
Commissioner	Shepherd	Rick	Shelby County Commission
Mr.	Smith*	Theodore	Birmingham-Jefferson County Transit Authority
Councilor	Smitherman	Crystal	City of Birmingham
Commissioner	Stephens	Jimmie	Unincorporated Jefferson County
Ms.	Thomas	Katrina	City of Birmingham
Mayor	Ware	Steve	Jefferson County Municipalities - Hueytown
Mr.	Washburn*	Nick	Blount County
Mayor	Webster	Charles	Jefferson County Municipalities - Clay
Mr.	Willingham*	David	Shelby County
Mayor	Woodfin*	Randall	City of Birmingham

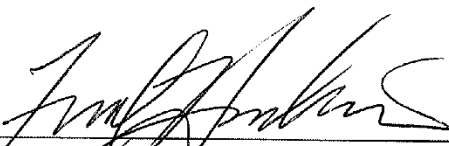
**RESOLUTION 2022-4**  
**FY 2024 UNIFIED PLANNING WORK PROGRAM**


WHEREAS, the Birmingham Metropolitan Planning Organization (MPO) is the organization designated by the Governor of the State of Alabama as being responsible, together with the State of Alabama, for implementing the applicable provisions of 23 USC 134 and 135 (amended by the Infrastructure Investment and Jobs Act, Section 11201, November 2021); 42 U.S.C. 2000d-1, 7401; 23 CFR 450 and 500; 40 CFR 51 and 93; and

WHEREAS, the U.S. Department of Transportation requires all urbanized areas, as established by the U.S. Bureau of the Census, and doing areawide urban transportation planning that involves more than one Department of Transportation operating administration, to submit a Unified Planning Work Program as a condition for meeting the provisions of 23 U.S.C. § 134; and

WHEREAS, consistent with the declaration of these provisions, the staff of the Birmingham MPO, in cooperation with the Alabama Department of Transportation, has prepared a Unified Planning Work Program for Fiscal Year 2024.

NOW THEREFORE, BE IT RESOLVED that the Birmingham Metropolitan Planning Organization (MPO) adopts the Unified Planning Work Program for FY 2024 this 9th day of August 2023.

  
\_\_\_\_\_  
Birmingham MPO Chair, Vice Chair, or Secretary

  
\_\_\_\_\_  
Charles Ball, Executive Director, RPCGB

# TABLE OF CONTENTS

The Transportation Planning Process .....	1
Task 1.0 Administration .....	5
1.1 MPO Administration .....	5
1.2 Unified Planning Work Program .....	6
1.3 Capital and Operating Purchases.....	7
1.4 Education and Training .....	9
Task 2.0 Planning Information .....	10
2.1 Data Collection and Management.....	10
2.2 Data Analysis and Forecasting .....	12
2.3 Geographic Information Systems .....	14
2.4 Model Development Program .....	16
Task 3.0 Public Involvement.....	18
3.1 Public Involvement and Outreach .....	18
Task 4.0 Environmental Process Planning.....	20
4.1 Air Quality Planning .....	20
4.2 Environmental Consultation Process.....	22
4.3 Advance Planning, Programming, and Logical Engineering (APPLE) .....	24
4.4 Climate Change.....	26
Task 5.0 Transportation Systems .....	28
5.1 Regional Transportation Plan .....	28
5.1.1 Air Quality Conformity Analysis and Reporting .....	30
5.1.2 Regional Transportation Plan Project Listing for Air Quality Conformity .....	31
5.2 Transportation Improvement Program (TIP).....	32
5.2.1 Amend TIP Project Listings for Air Quality Conformity .....	34
5.3 Public Transportation Planning .....	35
5.4 Freight Planning.....	36
5.5 Transportation System Performance Management and Monitoring.....	38
5.6 Transportation Safety Planning .....	40
5.7 Technical Assistance for Local Communities and Agencies.....	42
5.8 Complete Streets .....	43
Task 6.0 Programs and Technical Assistance .....	45
6.1 CommuteSmart Program (Rideshare) .....	45
6.2 Building Communities Program .....	46
Task 7.0 ADA .....	47
7.1 Compliance .....	47

Task 8.0	Grants .....	48
8.1	FTA Section 5310 Grant Program .....	48
8.2	Areas of Persistent Poverty (AoPP) .....	49
8.3	Safe Streets and Roads for All (SS4A) .....	50
8.4	Strengthening Mobility and Revolutionizing Transportation (SMART) .....	51
8.5	Distracted Driving Outreach and Education – UAB TRIP Lab .....	52
8.6	Technical Assistance Safety Project Planning .....	53

APPENDICES

List of Acronyms .....	A-1
Table 1: FY 2024 Organizational Responsibility, Federal .....	A-3
Table 2: FY 2024 Funding Sources .....	A-5
Structure of the Birmingham MPO .....	A-7
Metropolitan Planning Area/Transportation Management Area Map .....	A-8
Planning Factors .....	A-9
Livability Indicators .....	A-10
Current and Potential Planning Studies .....	A-11
Indirect Cost Summary .....	A-14



# THE TRANSPORTATION PLANNING PROCESS

## OVERVIEW

As a condition to the receipt of federal highway and transit capital and operating assistance, each Metropolitan Planning Organization (MPO) is required to have a transportation planning process. This process includes the development of a long-range or Regional Transportation Plan (RTP), short-range Transportation Improvement Program (TIP), a plan to promote attainment of air quality standards, human services coordinated transportation plan, and a work program that identifies planning and project development activities.

Certification of the transportation planning process is conducted every four years by the Federal Highway Administration (FHWA) and the Federal Transit Administration (FTA) and is necessary to receive surface transportation program, air quality, national highway system, interstate maintenance, state bridge replacement, and transit capital and operating funds. The Birmingham Metropolitan Planning Organization (MPO) membership is geographically representative of the Metropolitan Planning Area (MPA), the entire boundaries of Jefferson and Shelby counties, and portions of Blount and St. Clair Counties, based upon the most recent (2010) decennial U.S. census.

The Regional Planning Commission of Greater Birmingham (RPCGB) is the designated recipient of U.S. Department of Transportation (USDOT) planning funds used to assist the MPO in the performance of its responsibilities. These funds are designated by the State of Alabama, in agreement with the RPCGB.

Work tasks described in this report are conducted on a continual basis. An agreement among the Alabama Department of Environmental Management (ADEM), Alabama Department of Transportation (ALDOT), Birmingham-Jefferson County Transit Authority (BJCTA), RPCGB, Jefferson County Department of Health (JCDH), and the MPO outlines the responsibility of each organization in the transportation planning process.

## PURPOSE

The Unified Planning Work Program (UPWP) is the document that guides the MPO in fulfilling its planning responsibilities for the upcoming year. The primary objective of the UPWP is the development of an integrated planning program that considers planning activities and coordinates these activities to produce a total transportation plan that serves everyone. The UPWP presents the budget and work tasks necessary to accomplish and maintain the transportation planning process within the Birmingham MPA.

## VISION

Following is the vision statement for the Birmingham metropolitan area:

*Transportation has become the connective tissue of the region. By foot, by bike, by car, or by public transportation, residents experience reduced congestion and higher mobility, both of which are the result of four important decisions:*

- 1. Preserving and improving the existing local and interstate highways;*
- 2. Developing a responsive, efficient, and effective public transportation system;*
- 3. Supporting the use of alternative transportation modes; and*
- 4. Encouraging sustainable development patterns.*

This UPWP contains work tasks necessary for the RPCGB, BJCTA, and ALDOT to conduct transportation planning activities for the Birmingham MPA.

## **TITLE VI IN THE DEVELOPMENT OF THE UPWP**

It is the policy of the Birmingham MPO to provide open public input in the preparation of plans and programs, consistent with the requirements under the current transportation legislation:

1. **Open Process:** To have an open planning process that encourages early and continued public participation.
2. **Information Access:** To provide complete and timely information to interested parties and the public regarding the plans, programs, procedures, policies, and technical data produced or used during the planning process.
3. **Notice of Activities:** To provide timely and adequate public notice of meetings, reviews, and major document availability.
4. **Public Input and Organization Response:** To demonstrate consideration and recognition of public input and to provide appropriate responses thereto.
5. **Inclusive Process:** To protect low income and minority communities/citizens from disproportionate adverse impacts based on planning and implementation of projects and programs identified in the RTP and TIP. The MPO provides considerable opportunities for participation, both formal and informal, for citizens to share ideas and concerns throughout the planning and decision-making process.

Additionally, the Birmingham MPO is and will be compliant with and will follow all laws regarding discrimination, including:

- Civil Rights Act of 1964, 42 USC 2000d, et seq. which prohibits exclusion from participation in any federal program on the basis of race, color, or national origin.
- 23 USC 324 which prohibits discrimination on the basis of sexual orientation, adding to the landmark significance of 2000d. This requirement is found in 23 CFR 450.334(1).
- Rehabilitation Act of 1973, 29 USC 701 Section 504, which prohibits discrimination on the basis of a disability, and in terms of access to the transportation planning process.
- Americans with Disabilities Act of 1990 (ADA) which prohibits discrimination based solely on disability. ADA encourages participation of people with disabilities in the development of transportation and paratransit plans and services. All meetings conducted by the MPO will take place in locations that are accessible by persons with mobility limitations or other impairments.
- Executive Order 12898, referred to as Environmental Justice, requires that federal programs, policies, and activities affecting human health or the environment will identify and avoid disproportionately high and adverse effects on minority or low-income populations. The intent is to ensure that no racial, ethnic, or socioeconomic group bears a disproportionate share of negative environmental consequences resulting from government programs and policies.

As required under Title VI, the Birmingham MPO has completed an LEP Plan as part of its Public Involvement Plan, which can be accessed at: <https://www.rpcgb.org/public-involvement>.

The UPWP is developed annually and is available on the RPCGB website prior to being introduced for discussion at committee meetings. All committee meetings of the MPO are preceded by notices (containing the agenda, date, time, and location of the meeting) and supporting documentation. Notice is provided at least one week prior to meetings or as designated in committee bylaws. Notice is also provided to local media representatives and groups and individuals representing disadvantaged communities. All notices ask that individuals needing special accommodations notify the RPCGB at least three business days prior to the date of the meeting, so necessary arrangements can be made. Notices are posted on the internet and on the bulletin board outside RPCGB offices. The public has an opportunity to participate in discussions held at the committee meetings.

Detailed public involvement procedures are outlined in the 2022 Public Involvement Plan (PIP), which can be found at <https://www.rpcgb.org/public-involvement>.

### **SCOPE OF THE PLANNING PROCESS**

The planning process shall provide for consideration of projects and strategies of the planning factors listed on A-7.

The committee process is the basis for conducting UPWP tasks. Meetings of the Transportation Citizens Committee, Transportation Technical Committee, MPO Advisory Committee, and MPO Policy Committee are held monthly or as needed. In addition to the four transportation committees, subcommittees and joint committees are regularly used for the development of the TIP, Regional Transportation Plan (RTP), congestion management activities, and major transit projects.

Most traditional tasks are funded with planning funds (PL). Specialized tasks related to ridesharing, air quality, and local land use/transportation, utilize supplemental funds from the Congestion Mitigation Air Quality Program (CMAQ), Surface Transportation Block Grant (STBG), and Carbon Reduction Program. Large-scale transit planning projects are funded through the FTA.

### **Livability Principles and Indicators**

Federal and state agencies are using performance measures as a way of ensuring greater accountability for expenditure of public funds. ALDOT has adopted the Livability Principles and Indicators on A-8 as a sustainability measurement against future actions. These indicators will be used to develop the Birmingham RTP, TIP, Public Involvement Plan, Congestion Management Plan, and the Air Quality Conformity Report.

### **Transportation Performance Management**

A performance-based surface transportation program has been created with requirements for ALDOT, the Birmingham MPO, and BJCTA. MPOs are required to adopt targets or accept ALDOT's targets for the following categories:

#### **Injuries and Fatalities**

- Serious injuries per vehicle miles traveled
- Fatalities per vehicle miles traveled
- Total serious injuries, total fatalities
- Non-motorized fatalities
- Serious injuries

#### **PM3 Emissions Reduction**

- PM2.5
- NOx
- VOC

#### **Pavement**

- Percentage of pavement on the interstate in good condition
- Percentage of pavement on the interstate in poor condition
- Percentage of pavement on the non-interstate NHS in good condition
- Percentage of pavement on the non-interstate NHS in poor condition
- Percentage of bridge decks on the non-interstate NHS in good condition
- Percentage of bridge decks on the non-interstate NHS in poor condition

## Travel

- Percentage of person-miles traveled on the interstate that is reliable
- Percentage of person-miles traveled on the non-interstate NHS that is reliable
- Truck travel time reliability index
- Annual hours of peak excessive delay per capita
- Percent of non-single occupancy vehicle (SOV) travel
- Total emissions reduction

FTA's final rule defined the term "state of good repair" (SGR) and established a minimum federal requirement for transit asset management. This requirement applies to all recipients and subrecipients who own, operate, or manage public transportation capital assets. SGR performance measures include:

- Rolling stock (revenue vehicles): percentage by type that exceeds useful life benchmark (ULB)
- Equipment (over \$50,000): percentage of non-revenue service vehicles by type that exceeds ULB
- Facilities (FTA sponsored): percentage rated less than 3.0 on the TERM scale

On July 19, 2018, FTA published the Public Transportation Agency Safety Plan (PTSASP) Final Rule, which requires certain operators of public transportation systems that receive federal funds under FTA's Urbanized Area Formula Grants to develop safety plans that include the processes and procedures to implement Safety Management Systems (SMS). THE PTASP Final Rule requires that all public transportation providers develop safety performance measures. The below measures must be reflected in MPO transportation plans and TIPs updated or amended after July 20, 2021:

- Fatalities and rate of fatalities
- Injuries and rate of injuries
- Safety events and rate of safety events
- Mean distance between major mechanical failures

## TASK 1.0: ADMINISTRATION

### 1.1 MPO Administration

#### Objectives

To provide transportation committees, agencies, governments, and the public with transportation-related information, education, and training, and support transportation operations and initiatives

#### Previous Work

- Prepared for and participated in regular committee meetings with the public and local, regional, and state organizations
- Attended RPCGB Board meetings
- Prepared and submitted invoices to ALDOT and reviewed RPCGB financial statements
- Provided information to the RPCGB auditors and reviewed audit report
- Reviewed agreements for consistency with bylaws
- Reviewed funding agreements
- Provided information and assistance to individuals, businesses, organizations, and committees
- Participated in cooperative efforts with agencies and organizations outlined in the C3 agreement

#### Proposed Work

- Regular business and committee meetings (Citizens, Technical, Advisory, and Policy)
- Ad hoc committee meetings (i.e., Congestion Management, 5310 review committee)
- Attend RPCGB Board, Finance, Program Budget, and annual meetings
- Prepare and submit monthly invoices to ALDOT and review monthly financial statements
- Provide information to the RPCGB auditors and review draft and final audit reports
- Review agreements for consistency with regulations and bylaws
- Prepare scopes of work for programs and projects
- Provide information and assistance to individuals, businesses, organizations, and committees
- Join in cooperative efforts with governments, agencies, and organizations
- Develop and publish RFP for on-call services as needed
- AMPO annual membership dues of \$5,800

#### Products

- Committee notices, agendas, minutes, resolutions, and supporting documentation
- Invoices to ALDOT
- Staff services necessary to ensure certification of the transportation planning process

#### Staffing

RPCGB

#### Timeline for Proposed Work

Ongoing activities throughout the fiscal year

#### Financial Responsibility

FHWA PL and FTA 5303 planning funds have been consolidated into one PL category

Total	<u>\$300,829</u>
PL	\$240,663
Local	\$60,166

## **1.2 Unified Planning Work Program**

### **Objectives**

To produce a document that outlines work and identifies planning priorities and activities to be carried out within the Birmingham MPA

### **Previous Work**

- Prepared and Adopted FY 2024 UPWP that identified tasks and funding sources
- Submitted annual report of activities

### **Proposed Work**

- Priorities for funding projects in the TIP are determined from the National Planning Goals, federal planning factors, and the interests of the transportation committees
- Amend FY 2024 UPWP as needed
- Submit annual report to ALDOT
- Prepare FY 2025 UPWP

### **Products**

- UPWP for FY 2025
- FY 2024 annual report

### **Staffing**

RPCGB

### **Timeline for Proposed Work**

FY 2025 UPWP - Summer 2024

FY 2024 annual report - September 2024

### **Financial Responsibility**

FHWA PL and FTA 5303 planning funds have been consolidated into one PL category

Total	<u>\$25,000</u>
PL	\$20,000
Local	\$5,000

### 1.3 Capital and Operating Purchases

#### Objectives

To maintain, upgrade, and purchase software and hardware for gathering information, simplifying tasks, and articulating data to support transportation planning functions

#### Previous Work

Purchased demographic information

#### Proposed Work

- Software purchases, including license/maintenance fees and upgrades, are regularly made for geographic information systems, surveys, databases and spreadsheets, graphics, and operating systems
- Capital purchases to include servers, personal computers and peripherals, applications and services, and hardware/software for field data collection
- Analyze existing and potential transit routes and evaluate demographic information
- Monitor and contextualize capacity utilization, operational performance and finance data

As outlined in the 2022 *Agreement for Administering U.S. Department of Transportation for Financial Assistance for Transportation Planning between the State of Alabama and the Regional Planning Commission of Greater Birmingham*, Part 3 section F states, in part, “All purchases over Fifteen Hundred Dollars (\$1,500.00) must be approved by the STATE, in advance, in writing, to be eligible for reimbursement, unless it is detailed in the current UPWP and final cost is within 20% of the cost specified in that UPWP. All purchases over Five Thousand Dollars (\$5,000) must be approved by the FHWA, in advance, in writing, to be eligible for reimbursement, unless it is detailed in the current UPWP and final cost is within 20% of the cost specified in that UPWP.” Further, ALDOT requires anticipated purchases of more than \$5,000 to have a line-item entry in the UPWP.

The following capital and operating equipment are programmed:

Product	Total Cost	UPWP Task	Purpose
3D Analyst	\$500	2.3	Extension license for GIS analysis
Adobe Creative Cloud	\$3,500	2.2	Software subscription for online map publishing and document production
Aerial Imagery, LiDAR, & Planimetric Data	\$45,000	2.3	To provide spatial data resources in support of agency operations for both program management and project analysis
ArcMap Standard/ ArcGIS Pro Standard	\$9,000	2.3	Application licenses for GIS analysis and mapping
ArcMap Basic/ ArcGIS Pro Basic	\$1,200	2.3	Application licenses for GIS analysis and mapping
ArcGIS Online/ ArcGIS Pro	\$5,000	2.3	GIS subscription service for cloud-based mapping
ArcGIS Urban	\$5,000	2.3	Application licenses for GIS analysis and mapping
ArcServer Enterprise	\$5,000	2.3	GIS server software application
Community Viz	\$1,400	2.2	Desktop software license for GIS data analysis and modeling
Data Axle	\$8,000	2.1	Employment data purchase for GIS analysis
Equipment for Planning	\$5,500	2.3	Tablets, Projectors, kiosk mounts for public input, etc.

<b>Product</b>	<b>Total Cost</b>	<b>UPWP Task</b>	<b>Purpose</b>
ESRI Community Analyst	\$1,000	2.3	GIS subscription service for data profiles and analysis
Geostatistical Analyst	\$500	2.3	Extension license for GIS analysis
Linear Referencing System (LRS) Data Acquisitions	\$2,500	2.2	Transportation data purchases for LRS event table production, GIS analysis, and model forecasting
Maxwell Render Full Suite	\$1,100	6.2	Advanced 3D rendering software
MioVision Data Processing	\$3,000	5.6	Traffic cameras data collection and processing
Network Analyst	\$500	2.3	Extension license for GIS analysis
SketchUp Pro	\$1,100	6.2	3D modeling software upgrade
Southern Exposure Information	\$5,000	2.2	Construction Permits and Housing Market Data for socioeconomic and economic forecasting/analysis
Spatial Analyst	\$500	2.3	Extension license for GIS analysis
Strava Metro	\$5,000	5.4	Additional/updated aggregated bicycling data for bicycle planning - upgrade
Tableau Analytics	\$1,000	2.2	Data visualization application
Woods and Poole	\$800	2.2	Demographic and socioeconomic data purchase for analysis and forecasting.
X Tools Pro	\$265	2.3	Desktop software licenses for GIS analysis and mapping
<b>TOTAL ANNUAL COSTS</b>	<b>\$111,365</b>		

**Products**

- Software and upgrades
- Hardware and servers
- Data and data products
- License and maintenance fees

**Staffing**

RPCGB and third-party suppliers

**Timeline for Proposed Work**

Ongoing activities throughout the fiscal year

**Financial Responsibility**

FHWA PL and FTA 5303 planning funds have been consolidated into one PL category

Total	<u>\$111,365</u>
PL	\$89,092
Local	\$22,273



## **1.4 Education and Training**

### **Objectives**

To develop and maintain technical proficiency of staff for proper guidance and development of the planning process

### **Previous Work**

Staff members attended, made presentations, hosted, and assisted with workshops, conferences, and training; subscribed to and read relevant professional publications.

### **Proposed Work**

- Attend, make presentations, host, and/or assist with workshops, conferences, and training
- Subscribe to and read relevant professional publications
- Maintain certifications

### **Products**

- Annual transportation/planning conferences
- Training for elected officials, municipal staff, and consultants
- Other workshops, conferences, and training

### **Staffing**

RPCGB

### **Timeline for Proposed Work**

Ongoing activities throughout the fiscal year

### **Financial Responsibility**

FHWA PL and FTA 5303 planning funds have been consolidated into one PL category

Total	<u>\$125,000</u>
PL	\$100,000
Local	\$25,000

## **TASK 2.0: PLANNING INFORMATION**

### **2.1 Data Collection and Management**

#### **Objective**

To collect, create, and maintain data in support of local and regional transportation and community planning projects

#### **Previous Work**

- Purchased economic, transportation, property, environmental, and demographic data focused on population, socioeconomic, census, local developments, transportation, and employment characteristics
- Collected and built transportation data to improve the capabilities of the LRS
- Continued to advance GIS data inventory, cloud-based mapping, geo-applications, and open data resources to GIS. Mobile GIS resources and mapping features that enable public input have also been utilized.

#### **Proposed Work**

- Purchase data from ESRI, DataAxle, Geolytics, Southern Exposure, Woods and Poole Economics, and other supplemental data services including origin and destination data, Inrix (to support travel time data collection efforts for functionally classified non-National Highway System roadways), and Strava to support non-motorized transportation
- Generate reports that address demographic/socioeconomic trends, county profiles, comparison reports, socioeconomic datasets, transportation system inventories, travel characteristics, and infographics
- Data collection activities may include, but are not limited to, physical data collection, market data, industry subscriptions, online data purchases, and data services
- Work with ALDOT to coordinate and align LRSs to create a seamless data flow between the two systems
- Maintain and expand event tables for use in LRSs to better identify, analyze, and manage transportation issues
- Collect and build transportation data to improve the capabilities of the LRS. Event tables specific to transit routes, roadway ownership and maintenance, the TIP, and functionally classified roadways will be incorporated
- Expand web presence through cloud-based mapping functionalities and open data resources to provide easier public access to data for sharing, decision-making, and the collection of public input; provide a single-source point for information to the public, elected officials, and the development community
- Collect, maintain, and report on performance indicators, including metrics to support the federal Planning Factors, for use in benchmarking transportation system performance and informing the decision-making process

#### **Products**

- Spatial data inventory and assets
- Demographic, socioeconomic, economic, transportation, and other planning-related data files
- Regional reports that compare selected data and regional development characteristics, including demographic and socioeconomic regional trends, regional population and employment projections, county and local profiles, and themed analytical data reports and maps
- Report on local roadway facility traffic counts, transit ridership, non-motorized travel information, and other transportation and planning statistics for incorporation into the LRS. Other information collected

may include freight/goods movement, incident management, travel times, congestion by travel mode, TSMO, and regional roadway characteristics

- Static maps on the RPCGB website
- Online map gallery to make selected thematic maps readily available for public use through the RPCGB and project websites
- Public domain spatial datasets to the Open Data portal

**Staffing**

RPCGB, direct contract labor, and/or third-party contractors for activities, and organizations

**Timeline for Proposed Work**

Ongoing activities throughout the fiscal year

**Financial Responsibility**

FHWA PL and FTA 5303 planning funds have been consolidated into one PL category

Total	<u>\$218,750</u>
PL	\$175,000
Local	\$43,750

## **2.2 Data Analysis and Forecasting**

### **Objectives**

To collect, create, and maintain current and forecasted demographic and socioeconomic data used for the transportation demand model and other planning activities

### **Previous Work**

- Developed and refined demographic and socioeconomic data in support of its transportation and community planning efforts
- Developed traffic analysis zone (TAZ) geographies consistent with 2020 Census statistical geographies
- Developed updated Urbanized Area (UZA) geography consistent with 2020 Census statistical geographies
- Developed demographic and socioeconomic attributes for multiple census geographies, including TAZ, Block Group, Census Tract, Planning District, and County levels, utilized for travel demand evaluations, as well as local area projects and publications
- Continued to refine and maintain forecasts by purchasing data from Data Axle, ESRI, and Woods & Poole Economics for use in projects and publications, including the Regional Transportation Plan (RTP) and in support of other agency planning objectives
- Data collection such as census, economic, natural resources, transportation, transit, and related demographic and socioeconomic data, for use within the overall local and regional planning environment

### **Proposed Work**

- Continue to develop, refine, and maintain base year and forecast datasets
- Develop, maintain, and report on regional planning factors
- Purchase data from selected vendors for use in the development of forecasts, from such vendors as ESRI, Data Axle, Woods and Poole, Southern Exposure, Geolytics, Tableau and/or other appropriate economic and/or forecasting tools and models
- Develop a regional transportation demand model for the Birmingham MPA, used to identify deficiencies in the future transportation system. Cube Voyager (Avenue) modeling software is used for travel demand modeling and all other applicable processes, up to and including air quality conformity analysis in support of budget-based estimate reporting
- Coordinate with appropriate agencies for consideration of data projections outside the MPO boundaries to support broader regional planning efforts

### **Products**

- Socioeconomic, demographic, and economic datasets (base year and forecast) by TAZ, planning district, census tract, county, and region
- Regional Projections Report
- Special Reports
- Support of other agency reports and studies

### **Staffing**

RPCGB, direct contract labor, and/or third-party contractors for activities, and organizations

### **Timeline for Proposed Work**

Ongoing activities throughout the fiscal year

**Financial Responsibility**

FHWA PL and FTA 5303 planning funds have been consolidated into one PL category

Total	<u>\$62,500</u>
PL	\$50,000
Local	\$12,500

## **2.3 Geographic Information Systems**

### **Objectives**

To provide spatial data resources, including software, hardware, and data, to support agency operations for both program management and project analysis

### **Previous Work**

- Expanded GIS capabilities, including ESRI cloud-based mapping services, to enable the RPCGB to publish interactive thematic maps in a public domain gallery. Users can query data and incorporate published features into their own maps
- Continued to expand library of GIS datasets, including county parcel updates, street centerlines, building footprints, and aerial imagery
- Utilized ESRI geospatial platform for improved project analysis; upgraded GIS applications and remained current on maintenance through participation in the state Enterprise License Agreement (ELA) program
- Utilized GIS technology to enhance data collection efforts and public involvement

### **Proposed Work**

- Expand GIS capabilities specific to the ESRI cloud-based map service platform and geospatial/mobile application needs
- Build inventory of GIS datasets, including both raster and vector datasets
- Acquire routine imagery and/or LiDAR updates to support its planning efforts
- Acquire, develop, and maintain GIS-related data for use in the spatial analysis and visual display components of transportation and community planning projects
- Advance the development of an online GIS open data portal site in cooperation with participating agencies to enable public access to selected GIS datasets (public domain) to promote data sharing and use of common datasets
- Acquisition and training of GIS-related software or hardware, applications, extensions, or licenses
- Mapping Services

### **Products**

- Hardware/software acquisition
- Derivative products and analyses
- Partnerships and collaborations
- Updated orthophotography and planimetric data
- Updated LiDAR
- ESRI maintenance of the GIS system, map services, and analysis tools (ESRI ArcMap, ArcGIS Online, ArcGIS Pro, and ESRI Community Analyst)
- Identification and acquisition of GIS visualization and analytical tools such as ArcGIS Urban, City Engine, ArcGIS Pro, Dashboards, and Digital Twin applications

### **Staffing**

RPCGB, direct contract labor and/or third-party contractors for activities, and organizations

### **Timeline for Proposed Work**

Ongoing activities throughout the fiscal year

**Financial Responsibility**

FHWA PL and FTA 5303 planning funds have been consolidated into one PL category

Total	<u>\$62,500</u>
PL	\$50,000
Local	\$12,500

## **2.4 Model Development Program**

### **Objectives**

To develop and maintain traffic models, air quality emission models, and traffic simulation models for the transportation planning process

### **Previous Work**

Cube Voyager is the primary travel demand modeling software in use by the Birmingham MPO. It is used to analyze travel demands within the Census 2010 Birmingham MPA, network travel demand modeling, and in support of air quality conformity estimate preparation using the Motor Vehicle Emission Simulator (MOVES) software. RPCGB reviewed OD data sets by Streetlytics and incorporated some of it into the module to improve the travel demand output. The highway network expanded by including portions of Blount and St. Clair Counties based on the Census 2010. Within the Birmingham MPA, both Cube Voyager and MOVES2014b are used for the 2045 RTP and for Air Quality Transportation Conformity Determination, respectively. In early FY 2019, completed both travel demand model runs and air quality model runs for the 1997 ground level Ozone 1-hour standard for the 2040 RTP by FHWA/EPA. With new base year 2015, highway networks were coded for years 2017, 2024, 2034, 2040, and 2045 for the 2045 RTP. In September of FY 2019, the travel demand model runs and air quality model runs were completed for the 2045 RTP. In November 2022, RPCGB kicked off the travel demand model runs for the 2050 RTP and the FY 2024-2027 TIP.

The MOVES2010b has been updated to the MOVES2014b, used as the regional transportation conformity air model for the new FY 2020-2023 TIP and 2045 RTP in 2019. The MOVES2014b is used for the regional emission rate estimates and CMAQ project emission calculations in 2018, 2019, and 2020. MOVES2014b has been updated to MOVES3 in FY 2022. In January 2023, MOVES3 version 3 has been used for the 2050 RTP and the FY 2024-2027 TIP. The conformity analysis years of MOVES3 model runs are 2024, 2034, 2044, and 2050. Traffic projection and OD analysis based on travel demand model are conducted in various studies and projects in 2018. The transit network updates based on 2015-2016 are completed.

In FY 2011, Cube Avenue was purchased and has been successfully tested for subarea traffic simulation. The Cube Avenue model was successfully expanded and applied at the regional level, enabling the Birmingham MPO to evaluate the specific impacts of projects at a larger geographic scale, as well as the ability to conduct before and after studies.

Synchro Studio is used for corridor traffic simulation.

### **Proposed Work**

While the RPCGB will maintain the Cube Voyager of travel demand model for the short and long-range transportation plans, the travel demand model will be converted to TransCAD by Caliper to strengthen the GIS capabilities in model applications and keep consistent with ALDOT. RPCGB will continue to maintain and update Air model MOVES for the short and long-range transportation plans. Based on Census 2020 and new urbanized areas for Birmingham MPA, the model network will be updated with changes of urbanized areas and MPA accordingly. In recognizing the changes affecting the Greater Birmingham region, and the changing needs of the MPA and urbanized areas as it relates to transportation planning, the RPCGB will continue to review the OD data sets generated from prob datasets. The transit network and future transit development plan will be merged into a model. The model will be modified to address regional travel demands, congestion situations, and performance measures. More local datasets will be compiled as inputs for the Air Model.



Specific work tasks include:

- Development and maintenance of the regional travel demand model for the Birmingham MPA, as needed for RTP and TIP updates
- New roadway network based on Census 2020 and new urbanized areas
- Use MOVES3 for regional air quality conformity analysis accordingly
- Training of staff to utilize the best modeling practices
- Work with contractor to improve travel demand model and to convert to TransCAD in roadway network, transit, walking/biking mode, truck assignment, and calibration/validation
- Utilization of the model in support of existing projects and scenario planning
- Development, update, and maintenance of Air Quality Emission Model. Update MOVES input files with all local data sets and validate speed profiles based on local observations. Emissions factors will be developed in accordance with MOVES3 to meet the requirements set forth in 40 CFR 51 & 93.
- Cooperate with ALDOT, ADEM, FHWA, FTA, EPA, and other agencies to oversee/share the data collections, methodologies of data development, documentation, and modeling practices
- Project level analysis air quality models will be developed
- Will add scripts into models to address performance measures related to congestion mitigation and air quality
- Modify the model/factors to merge the new OD data sets to the Cube Voyager
- Use Synchro Studio to enhance analyses of existing traffic conditions and if necessary, operational and scenario planning in the corridor studies and the transportation sectors of the comprehensive plan

**Products**

- Base year 2021 with OD datasets based on new Census 2020 and new urbanized areas
- Travel demand model test runs by TransCAD for 2050 RTP
- Update Air Quality Models to the latest version and MOVES3 runs for regional emission analysis
- Project Level Analysis Model Runs via FHWA Emissions Calculation Toolkit/MOVES3 for CMAQ projects
- Congestion and Air Quality Analysis related to Performance Measures

**Staffing**

RPCGB, direct contract labor, and/or third-party contractors for activities, and organizations

**Timeline for Proposed Work**

Ongoing activities throughout the fiscal year

**Financial Responsibility**

FHWA PL and FTA 5303 planning funds have been consolidated into one PL category

Total	<u>\$156,250</u>
PL	\$125,000
Local	\$31,250

## **TASK 3.0: PUBLIC INVOLVEMENT**

### **3.1 Public Involvement and Outreach**

#### **Objectives**

To maintain a process for providing opportunities for everyone to be involved in the transportation planning process, with attention to individuals who are disadvantaged and/or vulnerable

#### **Previous Work**

- Prepared and distributed announcements for all meetings, training, and public involvement and posted on the RPCGB/MPO website
- Prepared, distributed, and posted announcements with link to submit comments and held public meetings for the FY 2050 RTP
- Maintained and updated website with links to documentation
- All public involvement procedures were followed; social media was used to increase accessibility

#### **Proposed Work**

- Coordinate with ALDOT on setting goals, objectives, performance measures, and targets, as required, for inclusion in the operational plans (TRP, TIP, CMP, and Conformity Report)
- Maintain MPO website with updates and links to meetings and project documentation
- Update and maintain MPO databases
- Meetings and meeting announcements, including monthly committee meetings, public involvement meetings, project meetings, and community outreach, as needed
- Newsletters
- Direct mailings, email announcements, press releases, flyers, notices, and fact sheets
- Facilitate technical workshops. Costs include, but are not limited to, speakers, logistics, and handouts.
- Develop interactive online surveys and other web-based outreach activities
- Prepare and distribute comment forms and surveys
- Documentation of minority and DBE representation of third-party contracts for projects funded by FHWA and FTA

#### **Products**

- Documentation of meetings and outreach activities
- Documentation and reporting of public involvement
- Title VI/DBE Report
- Transportation planning/project web pages
- MPO member training and education events/courses

#### **Staffing**

RPCGB, direct contract labor, and/or third-party contractors

#### **Timeline for Proposed Work**

Notices of meetings –Ongoing

Title VI/DBE Report – September 2024

**Financial Responsibility**

FHWA PL and FTA 5303 planning funds have been consolidated into one PL category

Total	<u>\$37,500</u>
PL	\$30,000
Local	\$7,500

## **TASK 4.0: ENVIRONMENTAL PROCESS PLANNING**

### **4.1 Air Quality Planning**

#### **Objectives**

- Achieve and maintain compliance with national air quality standards
- Protect and improve public health
- Minimize the economic impacts on existing businesses, and support economic growth consistent with clean air goals in Jefferson and Shelby counties

#### **Previous Work**

Alabama Partners for Clean Air (APCA) worked many outreach events throughout the year, particularly in the business and civic community. APCA conducted voluntary emission testing, promoted idle-free zones, and facilitated a Car Care program. A report documenting the program and funding activities of APCA was completed for the period October 1, 2022 – September 30, 2023.

#### **Proposed Work**

The following activities will be conducted by the APCA, with assistance provided by the RPCGB:

- Marketing and Public Outreach to educate the public about air quality issues and the consequences that individual choices have on air quality
- Employer and employee outreach to get major employers involved in air quality issues and encourage employees to travel to work by modes other than single-occupant vehicles
- Science and Environmental Education to teach children about air pollution, its health impacts, and how it can be prevented. The program also works with schools and parents on idle-free zones around schools.
- Clean Cities and Alternative Fuels program to reduce emissions from fleet vehicles through hybrid technology and alternative fuels. The program also helps fund electric vehicle charging infrastructure. The Alabama Clean Fuels Coalition is lead partner.
- Air Quality Forecasting program to produce and issue daily forecasts of particle pollution levels in Jefferson and Shelby counties. The lead partner for this activity is the Jefferson County Department of Health.
- Program Administration to include managing all air quality contracts, processing invoices, producing the annual report, monitoring performance and execution of contracts, and providing support to APCA.
- Coordinate with ALDOT on setting goals, objectives, performance measures, and targets, as required by the Infrastructure Investment and Jobs Act

#### **Products**

Annual Report documenting contract performance of organizations, including emissions reductions for the previous fiscal year

#### **Staffing**

RPCGB, direct contract labor and/or third-party contractors for activities, and organizations

#### **Timeline for Proposed Work**

Annual Report – April 2024

**Financial Responsibility**

Total	<u>\$975,000</u>
CMAQ	\$780,000
Local	\$195,000

## 4.2 Environmental Consultation Process

### Objectives

- To link the transportation planning and environmental assessment processes early in the project development phase
- To inform the project development and NEPA processes with the results of the environmental consultation process
- To establish inter-agency, cross-disciplinary communication, and education
- To identify and pursue collaborative, cross-disciplinary environmental mitigation strategies and funding opportunities

### Previous Work

- Participated in the Brownfield project site assessment and grant development
- Consulted with federal and state resource agencies regarding the development and advancement of federal, state, and locally funded transportation projects
- Environmental data collected to catalog and update information specific to:
  - Hazardous Waste Air Release (FRS sites)
  - Superfund Sites
  - Toxic Release Inventory
  - Brownfields
  - Environmental Hazards
  - Impervious Surfaces

### Proposed Work

- Environmental mapping - continuous updates and refinements to the environmental maps and data including cultural resources
- Update the Brownfields database for the Voluntary Cleanup Program and Targeted Assessment locations
- Continue to participate in and provide support to Brownfield planning efforts
- Promote consistency between the RTP and state and local land use plans and plans for conservation and development
- Encourage the reduction or mitigation of stormwater impacts on surface transportation
- Outreach and Education Activities - Provide educational opportunities and training to state and municipal governments on environmental planning topics

### Notes:

1. ALDOT ETS shall remain the sole arbiter of environmental issues on state and federal projects in Alabama and must be consulted in all instances. ALDOT may seek consultation with the FHWA on certain matters and will seek federal approval on a project only when all issues have been addressed.
2. Except for certain duties and responsibilities extended to the Birmingham MPO in writing and specific to a particular project and/or a consultant representing an MPO for a specific project, all actions are the province of ALDOT ETS.
3. Early or initial environmental coordination relating to a specific project with state and federal resource agencies shall only be carried out by the ALDOT ETS.

**Products**

- Environmental data acquisition and mapping
- Outreach and Education Activities

**Staffing**

RPCGB, direct contract labor and/or third-party contractors for activities, and organizations

**Timeline for Proposed Work**

Ongoing activities throughout the fiscal year

**Financial Responsibility**

FHWA PL and FTA 5303 planning funds have been consolidated into one PL category

Total	<u>\$1,250</u>
PL	\$1,000
Local	\$ 250

### **4.3 Advanced Planning, Programming, and Logical Engineering (APPLE)**

#### **Objectives**

To improve the quality and timelines of the overall project development process by:

- Assisting local governments in determining project feasibility in advance of entering an expensive and extended project development process
- Assisting project sponsors in better articulating project scope and understanding both the planning considerations and potential costs
- Assisting the project development process by educating local governments about the ALDOT project development process
- Providing information to the Birmingham MPO to better manage uncertainties in program funding

#### **Previous Work**

Completed and Ongoing APPLE Projects include:

- Trussville Chalkville Road Study (complete)
- Helena Old Town Pedestrian Study (complete)
- Chelsea US-280 Traffic Operations Study (complete)
- 16th Street North Pedestrian Improvements Study (complete)
- Pelham-Helena Connector Trail Study (complete)
- Shades Creek to Eastwood Trail Study (complete)
- US-411 Intersections Study (complete)
- Pinchgut Creek Trail Study (complete)
- US-31 Pedestrian Improvement, Access Management, and Operations Study
- Embracing Shades Creek – A Trail Study - Irondale
- New Road and Railroad Overpass Study – Chelsea
- Fultondale-Gardendale New Road Study – Jefferson County
- New Service Feasibility Study – BJCTA
- Buck Creek Trail Extension – Alabaster

#### **Proposed Work**

The RPCGB will continue to assist local governments and small project sponsors in assessing a project's feasibility. The feasibility assessment will better inform the local governments and small project decision-making process and aid them in determining their level of commitment for advancing the project. The goals of the APPLE program will be accomplished in several ways, including:

- Funding consultant/contractor work activities that directly develop APPLE reports
- Managing the feasibility assessment process for small municipalities/local governments
- Support consultant/contractor activities as related to the development of APPLE reports
- Educating project sponsors and contractors about the ALDOT project development process

#### **Products**

- Project Specific Reports documenting feasibility analysis
- Status reports

#### **Staffing**

RPCGB, ALDOT, direct contract labor, and/or third-party contractors for activities, and organizations

#### **Timeline for Proposed Work**

Ongoing activities throughout the fiscal year



**Financial Responsibility**

Total	<u>\$500,000</u>
STPBH	\$400,000
Local	\$100,000

## 4.4 Climate Change

### Objectives

- Develop Climate Change evaluation metrics
- Evaluate the RTP's impact on climate change
- Evaluate planned and programmed transportation projects' impact on climate change
- Provide guidance about regional strategies for air quality and congestion mitigation, as well as energy efficiency to reduce the Birmingham MPA's carbon footprint

### Previous Work

Greenhouse Gas (GHG) emissions are set up as an option in the air quality model in FY 2018, 2019, 2020, and 2021. Previous work produced a report titled *Climate Change Considerations and On-Road Greenhouse Gas Emissions in the Birmingham Metropolitan Planning Area*.

### Proposed Work

The Birmingham MPO has reassessed its approach to climate change, and how it will incorporate climate change into the metropolitan planning process. As such, the Birmingham MPO has chosen to narrow its focus, and will address road infrastructure vulnerability. The RPCGB will conduct a Vulnerability and Risk Assessment of transportation infrastructure by performing a thorough inventory and analysis of current road culverts/road crossings and report on the status and conditions of these assets. An element of this assessment will include the evaluation of the impact of storm events and future climate change scenarios on the assets. The process for completing this project is to emulate, or follow, FHWA's current Vulnerability and Risk Assessment Conceptual Model and to utilize other studies that have taken place in the region to promote consistency of data.

Other climate change evaluation activities will consider:

- Update GHG inventory, and specifically the contribution of mobile source emissions
- Evaluate and monitor mobile source energy consumption
- Develop Climate Change Performance Measures - Establish GHG emission and mobile source energy consumption baseline measures
- Integrate Performance Measures - Incorporate GHG and mobile source energy consumption measures into the MPO's transportation system performance metrics
- Develop GHG and Energy Consumption Targets - Develop a recommended GHG emissions and mobile source energy consumption targets
- Identify a menu of potential climate change adaptation strategies

### Products

- Vulnerability analysis of transportation infrastructure to climate change and weather hazards
- Set up GHG emissions inventory in MOVES3 model run
- Baseline climate change performance measures

### Staffing

RPCGB, direct contract labor and/or third-party contractors, and organizations

### Timeline for Proposed Work

Ongoing activities throughout the fiscal year.

**Financial Responsibility**

FHWA PL and FTA 5303 planning funds have been consolidated into one PL category

Total	<u>\$1,250</u>
PL	\$1,000
Local	\$ 250

## **TASK 5.0: TRANSPORTATION SYSTEMS**

### **5.1 Regional Transportation Plan**

#### **Objectives**

To ensure that the MPO maintains a long-range transportation plan for the Birmingham MPA that is:

- Technically based on the latest available data for land use, demographics, and travel patterns
- Comprehensive in nature and supports the development of a multimodal transportation system
- Philosophically based on regional goals and values, that are informed by public input and the 10 Federal Planning Factors
- Financially based on predictable, reliable funding sources
- In compliance with the latest federal transportation legislation and complies with federal requirements as set forth in 23 CFR § 450.324
- Developed through a performance-driven, outcome-based approach to planning

#### **Previous Work**

- Continued coordination with ALDOT to fulfill federal requirements related to performance measures. The RPCGB assisted ALDOT's Performance Measures consultant and continued to monitor progress with FHWA and ALDOT
- Developed, finalized, and adopted the 2050 Regional Transportation Plan
- Created a Systems Performance Report
- Coordination with ALDOT and local project sponsors to review and discuss changes to their roadway capacity project lists and discuss future funding
- Financial analysis and update to the Financially Constrained Plan - Assessment of existing and expected expenditures and revenue sources to support and advance transportation projects; update description of funding programs according to the IIJA
- Conducted two in-person public participation meetings held on April 19, 2023 followed by a 21-day public comment period; recorded overview presentation to post on website; responded to public comments and published public involvement report
- Coordination with IAC, ALDOT, FHWA and MPO committees
- Ran Travel Demand Model and made enhancements
- Monitored best practices for implementing BIL/IIJA requirements and included in the development of the 2050 RTP

#### **Proposed Work**

- Amend the 2050 RTP Capacity Project List and maps as appropriate to be consistent with the FY2024-2027 Transportation Improvement Program
- Continue to coordinate with ALDOT on setting goals, objectives, performance measures, and the adoption of targets required by the BIL/IIJA, as well as the tracking of targets
- Partner or participate in regional transportation planning efforts conducted by ALDOT, other state and federal partners, member municipalities, or other agencies
- Continuation of data collection for use in the next major RTP update
- Monitor best practices for implementing federal legislation requirements in advance of next major RTP update

#### **Products**

- Amend the 2050 RTP Capacity Project list and maps
- Performance Measures updates

**Staffing**

RPCGB and direct contract labor and/or third-party contractors for activities, and organizations

**Timeline for Proposed Work**

Ongoing activities throughout the fiscal year

**Financial Responsibility**

FHWA PL and FTA 5303 planning funds have been consolidated into one PL category

Total	<u>\$75,000</u>
PL	\$60,000
Local	\$15,000

### 5.1.1 Air Quality Conformity Analysis and Reporting for TIP and RTP

#### Objectives

To demonstrate that the RTP, and the funded projects and programs contained within it and the TIP, conform to the approved regional air quality standards as determined by the Statewide Implementation Plan (SIP), and are consistent with the Clean Air Act of 1990

#### Previous Work

- The RPCGB worked with the IAC to review proposals related to air quality and to recommend ways to reduce emissions and congestion. A new set of analysis years for air quality conformity has been set.
- Air quality model runs via MOVES2014b were conducted for the Ground Level Ozone standards and the PM2.5 standards in FY 2019. MOVES3 was used for 2050 RTP and FY 2024-2027 TIP in January 2023. The draft 2023 Air Quality Conformity Analysis Report go through reviews in May of 2023.
- Project level analysis for CMAQ projects was completed in FY 2018, FY 2019, FY2020, FY2021, and FY 2022.
- Completed draft 2023 Air Quality Conformity Determination Report for the 2050 RTP and the FY 2024-2027 TIP
- Complete 2022 Annual CMAQ obligated project emission report

#### Proposed Work

- Continue the involvement and cooperation with IAC to monitor air quality for the MPA
- Based on MOVES3, continue the air quality conformity analysis and the air quality conformity determination reporting to comply with changes in the regulations governing air quality and transportation planning
- Continue to update input files of MOVES3 with local data collections when they become available
- Review and Development of CMAQ project emissions estimate methodologies
- Climate Change will be supported (see Task 4.4 for details)

#### Products

- Emission analysis updates
- An Amended Report that demonstrates the total projected emissions are within the allowable limits for any changes of the 2050 RTP and FY 2024-2027 TIP or other changes required.
- Emission rate data sets for Jefferson and Shelby Counties
- The Annual CMAQ obligated project emission report

#### Staffing

RPCGB, direct contract labor, and/or third-party contractors for activities, and organizations

#### Timeline for Proposed Work

Ongoing activities throughout the fiscal year

Annual CMAQ obligated project emission report – February 2022

#### Financial Responsibility

FHWA PL and FTA 5303 planning funds have been consolidated into one PL category

Total	<u>\$43,750</u>
PL	\$35,000
Local	\$8,750

## 5.1.2 Regional Transportation Plan Project Listings for Air Quality Conformity

### Objectives

To amend the RTP as required, using additions and deletions to the program listings, and modifications to existing scopes of work and budgets.

### Previous Work

- Monitor the proposed projects and changes of project scopes of work
- Identify capacity projects to be included in the conformity analysis
- Select capacity project based on the air quality conformity analysis years

### Proposed Work

- Continue monitoring the capacity project changes
- Identify new highway capacity projects to be added to the 2050 RTP/ FY2024-2027 TIP
- Monitor highway capacity project schedule changes crossing the conformity analysis years
- Review and document proposed new highway capacity projects constituting a Plan amendment that is subject to assignment to an air quality conformity year and a system level conformity determination

### Products

- Capacity Project map updates
- Capacity Project Listing updates if there is any required change of 2050 RTP and FY 2024-2027 TIP

### Staffing

RPCGB

### Timeline for Proposed Work

Updated capacity project listing table when needed

### Financial Responsibility

FHWA PL and FTA 5303 planning funds have been consolidated into one PL category

Total	<u>\$12,500</u>
PL	\$10,000
Local	\$2,500

## **5.2 Transportation Improvement Program (TIP)**

### **Objectives**

- Develop a list of federally funded transportation projects to be completed by the ALDOT, the BJCTA, local governments, and other project sponsors
- Monitor the Financial Constraint, the status of projects programmed (to include advancement) under the STPBH, and the CMAQ, and achievement of the federal Livability Principles and Indicators
- Administer TIP amendment requests and ensure that the program is advancing the goals, objectives, and priorities of the RTP

### **Previous Work**

- Coordinate TIP modifications and amendments with ALDOT and project sponsors
- TIP Amendments - the RPCGB processed TIP amendments as needed
- Continued to maintain TIP financial constraint
- Annual Obligations Listing - Published a list of obligated projects for the previous fiscal year
- Continued to monitor the status of CMAQ and STPBH projects
- Updated and refined online interactive TIP map
- Coordinated with ALDOT on setting goals, objectives, performance measures, and targets
- Developed the FY 2024 to 2027 Draft TIP
- Submitted Draft TIP to ALDOT and IAC for review
- Solicited public comments for the Draft TIP
- Presented Draft TIP and public comments to MPO Committees for review and approval
- Post Final TIP on website

### **Proposed Work**

- TIP Amendments - the RPCGB will process TIP amendments as needed
- Continue to maintain TIP financial constraint
- Annual Obligations Listing - RPCGB will publish a list of obligated projects for previous fiscal year
- Continue to monitor status of TAP, CMAQ, Carbon Reduction Program, and STPBH projects
- Identify and contact sponsors of inactive projects with a focus on projects over 10 years old
- Update and refine online interactive TIP map
- Continue to coordinate with ALDOT on requirements

### **Products**

- Annual Listing of Previous Year Obligated (Authorized) Projects
- TIP Amendment resolutions

### **Staffing**

RPCGB

### **Timeline for Proposed Work**

Annual Obligations Listing – Fall 2023

Draft FY 2024 to 2027 TIP – Winter 2024

Final FY 2024 to 2027 TIP – Summer 2024



**Financial Responsibility**

FHWA PL and FTA 5303 planning funds have been consolidated into one PL category

Total	<u>\$187,500</u>
PL	\$150,000
Local	\$37,500

## 5.2.1 Amend TIP Project Listings for Air Quality Conformity

### Objectives

To amend the TIP, both annually and as required, in accordance with additions and deletions to the RTP project and program listings and modifications to existing scopes of work and budgets

### Previous Work

- Complete the CMAQ project emissions estimates
- Select existing and committed projects for plan updates

### Proposed Work

- Continue to calculate project emissions if needed
- Continue monitoring the capacity project changes
- Identify new highway capacity projects to be added to the FY 2024-2027 TIP
- Monitor highway capacity project schedule changes crossing the conformity analysis years
- Review and document proposed new highway capacity projects constituting a Plan amendment that is subject to assignment to an air quality conformity year and a system level conformity determination

### Products

- Project listings
- Project location map updates
- Project emission benefit worksheets

### Staffing

RPCGB

### Timeline for Proposed Work

Ongoing activities throughout the fiscal year based on needs

### Financial Responsibility

FHWA PL and FTA 5303 planning funds have been consolidated into one PL category

Total	<u>\$1,875</u>
PL	\$1,500
Local	\$ 375

### 5.3 Public Transportation Planning

#### Objectives

- Promote a public transportation system that connects people to activities and services, while encouraging economic development, especially in distressed and/or gap areas
- Assist existing and potential public transportation providers with planning, service delivery, financing strategies, and evaluation of multimodal needs, deficiencies, and opportunities

#### Previous Work

- Supported BJCTA with transit planning guidance and assistance
- Assist BJCTA with performance measures data
- Provided technical assistance to agencies, governments, and transportation providers

#### Proposed Work

- Coordinate with ALDOT and BJCTA on setting goals, objectives, performance measures, and targets
- Provide technical assistance to agencies, governments, and transportation providers
- Identify and evaluate local bus and paratransit needs
- Assist BJCTA with maintaining and modifying transit system routes
- Assist with coordination of elderly and disabled transportation

#### Products

- Data collection and analysis
- Mapping

#### Staffing

RPCGB, transportation providers, contract labor, and/or third-party contractors

#### Timeline for Proposed Work

Ongoing activities throughout the fiscal year

#### Financial Responsibility

FHWA PL and FTA 5303 planning funds have been consolidated into one PL category

Total	<u>\$50,000</u>
PL	\$40,000
Local	\$10,000

## **5.4 Freight Planning**

### **Objectives**

Support the ALDOT Statewide Freight Plan, collect and utilize freight data to improve the transportation planning process, identify improvements for freight movements, and support the Federal Planning Factors

### **Previous Work**

- Coordinated with ALDOT on setting goals, objectives, performance measures, and targets required by the BIL / IJJA
- Participated on the ALDOT Freight Advisory Committee as part of the ALDOT Statewide Freight Plan update
- Wrote and published the Freight Chapter of the Birmingham MPO's 2050 Regional Transportation Plan that included the following sections: regional freight system profile, freight and commodity flows, economic impacts of the freight industry, current and ongoing plans and studies, freight trends and freight-related capacity projects
- Identified, collected, and evaluated available updated freight system data for use in the development of the 2050 RTP Freight Chapter, including IMPLAN data and FHWA's Freight Analysis Framework (FAF5.3) dataset
- Conducted a 4-question freight survey as part of the development of the 2050 Regional Transportation. The questions were aimed at understanding the three greatest strengths and challenges of the current freight system in the Birmingham region

### **Proposed Work**

- Coordinate with ALDOT on setting goals, objectives, performance measures, and targets required by the BIL / IJJA
- Continue to support ALDOT's Statewide Freight Plan update and provide supporting data as necessary
- Compile and analyze data to support regional freight planning
- Participate in any ALDOT Statewide Freight Advisory Committee meetings
- Continue to promote the implementation of the recommendations listed in the 2019 Birmingham Regional Freight Plan
- Support local freight partners and help facilitate discussions between local municipalities and freight partners on issues such as the elimination of at-grade rail crossings
- Attend training webinars or workshops on freight planning

### **Products**

- Performance Measures
- Data updates

### **Staffing**

RPCGB, direct contract labor and/or third-party contractors for activities, and organizations

### **Timeline for Proposed Work**

Ongoing activities throughout the fiscal year

**Financial Responsibility**

FHWA PL and FTA 5303 planning funds have been consolidated into one PL category

Total	<u>\$11,875</u>
PL	\$9,500
Local	\$2,375

## **5.5 Transportation System Performance Management and Monitoring**

### **Objectives**

To identify and/or develop appropriate measures to monitor the performance of the transportation system in accordance with the RTP goals and objectives, the Congestion Management Process (CMP), federal and state performance targets, and supporting/complementary planning functions, i.e., economic development or land use

### **Previous Work**

- Analyzed, summarized, and presented Impact of Covid-19 Shutdown on Traffic and Crashes
- Coordinate and manage CMP Committee
- Managed UAB contract
- Developed scope and tasks for interns
- Data monthly summary reports
- Bottleneck summary reports
- Collected turn movement data at congested intersections
- Coordinated with ALDOT on setting goals, objectives, performance measures, and targets as required
- Assisted ALDOT with some of its efforts on the Regional Traffic Operations Program (RTOP)

### **Proposed Work**

The CMP enables the Birmingham Metropolitan Planning Organization to comply with federal regulations for Transportation Management Areas having populations of 200,000 or more. It empowers the RPCGB, acting as the Birmingham MPO, to identify and/or develop performance metrics on which to monitor and compare congested conditions year after year. The information gathered is also used to inform the transportation decision-making process.

Transportation System Performance Monitoring and Reporting - Building from previous work and following the guidance of the U.S. Department of Transportation, the Birmingham MPO will continue to identify performance measures including analyzing and summarizing NPMRDS data. This will include an expansion of the ongoing coordination with ALDOT and their efforts with this work. The following is a list of proposed work:

- Continue to Analyze, summarize, and present Impact of Covid-19 Shutdown on Traffic and Crashes
- Coordinate and manage CMP Committee
- Manage UAB contract
- Develop scope and tasks for interns
- Data monthly summary reports
- Bottleneck summary reports
- Continue to assist DOT with the Regional Traffic Operations Program (RTOP)
- Continue to collect trail count data
- Continue to collect turn movement data

BJCTA will collect, maintain, and report on transit performance indicators to include metrics to support the performance measures for use in benchmarking the system's performance and informing both the MPO's and BJCTA's decision-making process.

### **Products**

- Data monthly summary reports
- Bottleneck summary reports
- Data processing for MioVision

**Staffing**

RPCGB, direct contract labor and/or third-party contractors for activities and organizations

**Timeline for Proposed Work**

Ongoing activities throughout the fiscal year

**Financial Responsibility**

FHWA PL and FTA 5303 planning funds have been consolidated into one PL category

Total	<u>\$375,500</u>
PL	\$70,000
STPBH	\$230,400
Local	\$75,100

## 5.6 Transportation Safety Planning

### Objectives

To incorporate transportation safety into the planning process and improve transportation safety in the community. To support ALDOT's efforts to improve safety of the transportation system for motorized and non-motorized users

### Previous Work

- Presented ALDOT's Safety Performance Targets to the MPO and ensured they were formally adopted
- Expanded the education and outreach efforts of the Translational Research for Injury Prevention (TRIP) Laboratory at the University of Alabama at Birmingham. The TRIP Lab will further educate young drivers about the consequences of distracted driving.
- Coordinated with ALDOT on setting goals, objectives, performance measures, and targets
- Managed and provided assistance to the Technical Assistance for Safety Project Planning (TASPP)

### Proposed Work

- Present ALDOT's Safety Performance Targets to the MPO and ensure they are formally adopted
- Continue to support pedestrian and bicycle safety outreach campaigns, to include Public Service Announcements to educate non-motorists and motorists about behaviors impacting traveler safety
- Monitor the federal rulemaking on performance measures for safety
- Continue to expand the education and outreach efforts of the TRIP Laboratory at the University of Alabama at Birmingham. The TRIP Lab will further educate young drivers about the consequences of distracted driving
- Coordinate with ALDOT on setting goals, objectives, performance measures, and targets
- Manage and provide assistance to the TASPP

### TASPP

In addition to the various efforts under the Safety Planning task, the RPCGB will assist local governments to identify and analyze roadways and intersections that have safety concerns. The following is list of tasks to be performed during the study:

#### Task 1: Assessment of Safety Data

- A. Assist the RPCGB with assessing safety conditions within the region by evaluating 5 years of data from the Alabama Critical Analysis Reporting Environment (CARE) for all municipalities within RPCGB.
- B. Assist the RPCGB with identifying data-driven hotspots and regional/local crash trends and prepare summary mapping and tables
- C. Contact MPA jurisdictions to share assessment information and discuss local safety conditions and concerns

#### Task 2: Outreach and Education

- A. Prepare content and conduct a group training session for MPA jurisdictions
- B. Core elements and benefits of data-driven safety planning
- C. Diagnosis: selecting sites and countermeasures
- D. Safety-APPLE program and HSIP
- E. Evaluating effectiveness of countermeasures
- F. Follow up with individual jurisdictions and document status/needs



- Task 3: Provide Technical Assistance to jurisdictions on an as needed basis and maintain a contact log
- A. Site selection and application process for Safety-APPLE
  - B. HSIP application process

The reports will not publish specific crash data and they will contain the appropriate clause as per ALDOT's document titled *The Alabama Transportation Planner's Guide to Safety Data Access and Documentation*, June 2016.

**Notes:**

1. ALDOT ETS shall remain the sole arbiter of environmental issues on state and federal projects in Alabama and must be consulted in all instances. ALDOT may seek consultation with the FHWA on certain matters and will seek federal approval on a project only when all issues have been addressed.
2. Except for certain duties and responsibilities extended to the Birmingham MPO in writing and for a specific project and/or a consultant representing an MPO for a specific project, all other actions are the province of ALDOT ETS.

**Products**

- Set goals, objectives, performance measures, and targets; identify high accident locations; develop maps and reports concerning safety issues; and evaluate traffic, freight, bicycle, and pedestrian movements
- Progress reports from TRIP Laboratory
- Presentations, analysis summaries, and Technical Memoranda from the TASPP

**Staffing**

RPCGB, direct contract labor and/or third-party contractors for activities, and organizations

**Timeline for Proposed Work**

Ongoing activities throughout the fiscal year

**Financial Responsibility**

FHWA PL and STPBH Funds

Total	<u>\$62,500</u>
PL	\$50,000
Local	\$12,500

## 5.7 Technical Assistance for Local Communities, Agencies, and the MPO

### Objectives

To provide technical assistance, and/or support to local entities (governmental and non-governmental), and the public for any planning-related issues and requests that are either too small in scope or too short-lived to rise to the level of requiring a formal scope and budget

### Previous Work

- Meeting attendance
- Assistance to local governments
- Data mining and report processing
- Document printing and delivery
- Printing maps
- Meeting facilitation/organization
- Local government planning and mapping assistance

### Proposed Work

The RPCGB will assist local governments, small project sponsors, and non-governmental organizations by providing general planning support and technical assistance on an as-requested basis, and when financially and technically feasible. This includes:

- Develop draft and finalize grant applications for federal discretionary funding programs
- Attend City Council, local Planning Commission, neighborhood association, and other community and/or organizational meetings as requested
- Provide comments/input to reports, correspondence, and discussions on transportation-related topics on specific transportation issues or items
- Local government planning and mapping assistance
- Data assistance

### Products

- Assistance with project management and implementation as necessary
- Analyses, mapping, and planning assistance as requested
- Reports and memoranda related to local assistance as required.
- Attendance of meetings as requested.
- Attendance, if available, at workshops, conferences, and training to improve efficiency and skills under this work program task

### Staffing

RPCGB, direct contract labor and/or third-party contractors for activities, and organizations

### Timeline for Proposed Work

Ongoing activities throughout the fiscal year.

### Financial Responsibility

FHWA PL and FTA 5303 planning funds have been consolidated into one PL category

Total	<u>\$43,750</u>
PL	\$35,000
Local	\$8,750

## 5.8 Complete Streets

### Objectives

To support the development of a regional network of active transportation facilities, including sidewalks, bikeways, and pedestrian and bicycle trails, to connect neighborhoods with destinations such as workplaces, schools, residences, businesses, recreation areas, healthcare and childcare services, or other community activity centers

### Previous Work

- Made updates to the [www.B-ActivePlan.com](http://www.B-ActivePlan.com) website, including an updated online interactive map to show existing trail and bike facilities throughout the region
- Birmingham Regional Active Transportation Plan (B-Active Plan) – Published the 5th Annual State of the Network Report in June 2023
- Updated the regional GIS database of existing bicycle and trail facilities with information provided by Shelby County, City of Birmingham and the Freshwater Land Trust (Red Rock Trail System additions)
- Assisted municipalities and the Freshwater Land Trust by providing active transportation facility GIS data when requested
- Wrote and published the Active Transportation chapter that was included as part of the Birmingham MPO's 2050 Regional Transportation Plan
- CommuteSmart promoted the National Bike League's celebration of Bike Month by posting digital bike tips and videos on [www.b2wbham.com](http://www.b2wbham.com). CommuteSmart also hosted energizer stations at Domestique Coffee locations, Revelator Coffee and Redemptive Cycles on Bike-to-Work Day
- Participated on the Freshwater Land Trust's Red Rock Action Committee to guide implementation of the new Red Rock Priority Plan
- Participated in the local Urban Land Institute Transportation Committee meetings
- Participated in meetings with the Red Mountain Cut Foundation to identify potential federal grants for pedestrian and bicycle improvements to 21<sup>st</sup> Avenue South and the Red Mountain Expressway Cut

### Proposed Work

All work under this task will comply with the following FHWA guidelines:

1. Adoption of Complete Streets standards or policies
2. Development of a Complete Streets prioritization plan that identifies a specific list of Complete Streets projects to improve the safety, mobility, or accessibility of a street
3. Development of transportation plans to:
  - A. Create a network of active transportation facilities, including sidewalks, bikeways, or pedestrian and bicycle trails, to connect neighborhoods with destinations such as workplaces, schools, residences, businesses, recreation areas, healthcare and childcare services, or other community activity centers
  - B. Integrate active transportation facilities with public transportation service or improve access to public transportation
  - C. Create multiuse active transportation infrastructure facilities, including bikeways or pedestrian and bicycle trails, that make connections within or between communities
  - D. Increase public transportation ridership
  - E. Improve the safety of bicyclists and pedestrians
4. Regional and megaregional planning (i.e., multi-jurisdictional transportation planning that extends beyond MPO and/or state boundaries) to address travel demand and capacity constraints through alternatives to new highway capacity, including through intercity passenger rail
5. Development of transportation plans and policies that support transit-oriented development

Specifically, work by RPCGB will include:

- Local Planning Assistance – Respond to requests from municipalities, nonprofits, and advocacy groups to assist with the planning and development of trails, bicycle and pedestrian facilities
- Provide educational opportunities and technical assistance on implementation of Complete Streets
- Evaluate projects that might incorporate Complete Streets design
- Work with ALDOT and partner agencies to expand connection of the transportation system through the implementation of Complete Streets
- Work with Birmingham-Jefferson County Transit Authority to identify areas that could improve transit accessibility through Complete Streets enhancements
- Birmingham Regional Active Transportation Plan (B-Active Plan) – Publish the Annual State of the Network Report; promote, support, and assist with implementation of the Plan
- Update and maintain regional GIS database of existing active transportation facilities
- Utilize the Miovision camera to collect bike/ped counts at various locations
- Local Planning Assistance – Regular coordination with municipalities, nonprofits, and advocacy groups to assist with the planning and development of trails, on-street bike facilities, and sidewalks:
- Education and Outreach Activities – Support ongoing programmatic activities and assist with outreach efforts. Coordinate regional events for Bike-to-Work Day and provide support to CommuteSmart Birmingham
- Participate in the various group meetings that are intended to help promote the coordination of efforts related to bicycle/pedestrian/park improvements throughout the region

### **Products**

- Promotion of Complete Streets, including educational and technical assistance
- Incorporate Complete Streets in comprehensive plans, corridor studies, and general planning activities
- Provide active transportation data and mapping assistance – in the form of GIS data, maps, and online interactive maps
- Birmingham Regional Active Transportation Plan (B-Active Plan) – publish the Annual State of the Network Report
- Bike/ped traffic counts using the Miovision camera
- GIS-data driven bicycle and sidewalk demand analyses or suitability analyses
- Events, promotional materials, and media interviews for annual Bike-to-Work Day events
- Education events, presentations, workshops, media outreach/interviews, and website updates to [www.B-ActivePlan.com](http://www.B-ActivePlan.com) and [www.b2wbham.com](http://www.b2wbham.com) websites

### **Staffing**

RPCGB, direct contract labor and/or third-party contractors for activities, and organizations

### **Timeline for Proposed Work**

Ongoing activities throughout the fiscal year

### **Financial Responsibility**

Total	\$140,000
PL	\$112,000
Local	\$28,000

## TASK 6.0: PROGRAMS and TECHNICAL ASSISTANCE

### 6.1 CommuteSmart Program (Rideshare)

#### Objectives

To improve air quality and reduce traffic congestion by working with individuals and employers to reduce the number of drive-alone commutes

#### Previous Work

Ongoing activities have been conducted for employer-based outreach programs, vanpool operations services, and park-and-ride lot development. An annual report documenting accomplishments was prepared and printed.

#### Proposed Work

- Outreach and Marketing Activities designed to increase the number of employers who encourage use of commuting alternatives and the number of participants in the program
- Turn-Key Vanpool Operations Services
- Support Bike-to-Work Day outreach events

#### Products

- Document emissions reduction estimates
- Outreach and marketing of vanpool and rideshare programs - Ongoing
- Customer service support to program participants - Ongoing
- Commuter incentive programs such as GetGreen and CommuterClub - Ongoing
- Partner with companies with 150 or more employees - Ongoing
- Annual Report

#### Staffing

RPCGB, direct contract labor and/or third-party contractors for activities, and other organizations

#### Timeline for Proposed Work

Document emissions reduction estimates – March 2024

Annual Report – March 2024

#### Financial Responsibility

Total	<u>\$1,300,000</u>
STPBH	\$1,300,000
Local	\$0

## 6.2 Building Communities Program

### Objectives

To provide grants to local communities within the Birmingham MPA for projects, strategies, and services that support FHWA's 10 Federal Planning Factors and Planning Emphasis Areas, as well as the 10 Smart Growth Principles, including transportation and land use integration, economic vitality, safety and security, accessibility and mobility, environmental/air quality, system preservation, housing choice, green infrastructure, transportation choices, sustainable systems, and quality of life.

### Previous Work

- Argo Comprehensive Plan and Zoning Ordinance
- Helena Comprehensive Plan
- Moody Comprehensive Plan
- Shelby County Comprehensive Plan

### Proposed Work

A negotiated process between the RPCGB and local governments within the Birmingham MPA is used to develop Building Communities projects consistent with eligible transportation and land use activities. Land use and transportation needs are identified, a determination is made for consistency with Building Communities' goals, a project scope of work and budget are developed, and a cost-sharing agreement is made.

Projects currently in progress in FY 2023 and scheduled to be completed in FY 2024 include:

- Fultondale Comprehensive Plan
- Regional Toolkit for Creating More Resilient Communities

Projects anticipated to begin in FY 2024:

- Alabaster Comprehensive Plan
- Bessemer Comprehensive Plan
- Leeds Comprehensive Plan
- Margaret Comprehensive Pan

### Products

Plans and programs suitable for implementation

### Staffing

RPCGB, direct contract labor and/or third-party contractors for activities, and organizations

### Timeline for Proposed Work

Ongoing activities throughout the fiscal year

### Financial Responsibility

Total	<u>\$1,000,000</u>
STPBH	\$800,000
Local	\$200,000

## TASK 7.0: ADA

### 7.1 Compliance

#### Objectives

The RPCGB, on behalf of the Birmingham Metropolitan Planning Organization (MPO), will continue to provide technical assistance to various cities and counties within the MPA to perform ADA Self Evaluations, ADA Transition, or ADA Access Plans in accordance with the Americans with Disabilities Act of 1990 and Section 504 of the Rehabilitation Act of 1973.

#### Previous Work

- Documented the status of the municipalities and ADA Coordinators on a tracking table
- Assisted municipalities with their Self Evaluations, Transition Plans, or Access Plans (only assistance will be provided; no plan development)
- Performed field reviews as necessary to provide research and recommendations to municipalities
- ADA Plan for MPO
- Sent letters to all municipalities that had not shown progress on their ADA plan
- Coordinated with ALDOT and FHWA on ADA efforts
- Performed RFP, solicited and selected a new consultant for the ADA Assistance Program
- Initiated and managed ADA Assistance Program

#### Proposed Work

- Continue to assist municipalities
- Continue to track status of ADA plan for each municipality
- Continue to document the status of the municipalities and ADA Coordinators on tracking table
- Continue to make recommendations for those municipalities that do not have a Self-Evaluation or Transition Plan
- Continue to assist municipalities with their Self Evaluations, Transition Plans, or Access Plans (only assistance will be provided; no plan development)
- Continue to perform field reviews as necessary to provide research and recommendations
- Continue to coordinate with ALDOT and FHWA

#### Products

- ADA Tracking Table including status

#### Staffing

RPCGB, direct contract labor, and/or third-party contractors for activities, and organizations

#### Timeline for Proposed Work

Ongoing activities throughout the fiscal year

#### Financial Responsibility

FHWA PL and FTA 5303 planning funds have been consolidated into one PL category

Total	<u>\$25,000</u>
PL	\$20,000
Local	\$5,000

## TASK 8.0: PLANNING GRANTS

### 8.1 FTA Section 5310 Grant Program

#### Objectives

To competitively award and distribute Federal Transit Administration (FTA) grant funding for the purpose of improving mobility for seniors and individuals with disabilities and ensure subrecipients' compliance with regulations.

#### Previous Work

- Created TrAMS applications and amendments for funding
- Drafted and secured contracts with subrecipients
- Assisted subrecipients with procurement, paid invoices, and conducted program audits of subrecipients
- Drafted Request for Projects for 5310 apportionments
- Flexed funds from Carbon Reduction Program to 5310 program
- Presented funding recommendations to MPO and ensured projects were included in TIP and STIP
- Prepared Program of Projects (POP)

#### Proposed Work

- Draft and publish a Request for Projects
- Present funding recommendations to MPO and ensure projects are included in TIP and STIP
- Flex funds to 5310 program
- Create TrAMS applications and amendments for funding
- Program administration - contract with subrecipients, oversee procurement, pay invoices, ensure compliance with regulations, and conduct program audits of subrecipients
- Prepare POP and Update PMP as needed

#### Products

List of awards for grant funding  
Program of Projects

#### Staffing

RPCGB

#### Timeline for Proposed Work

Ongoing activities throughout the fiscal year

#### Financial Responsibility

Total	<u>\$2,541,004</u>
FTA 5310	\$2,052,803
Local	\$488,201



## 8.2 Areas of Persistent Poverty

### Objectives

Study three clusters in the Birmingham MPA and develop plans for improving transportation options and land use to connect residents of persistently impoverished areas to the BRT, jobs, healthcare, and services.

### Previous Work

- Project kickoff with public involvement and stakeholder meetings
- Demographic data collection and analysis
- Mapping
- Transit and microtransit data collection and analysis

### Proposed Work

- Grant administration
- Assess potential for Transit Oriented Development, Complete Streets, and accessibility of bus stops
- Review options for extending the BRT line and providing bicycle/pedestrian facilities
- Evaluate potential land use and economic development options to stimulate economic activity
- Develop opportunities for underutilized properties
- Create alternatives and recommendations for improvements

### Products

- Task reports
- Final report

### Staffing

RPCGB, direct contract labor, and/or third-party contractors for activities, and organizations

### Timeline for Proposed Work

Ongoing activities throughout the fiscal year

### Financial Responsibility

Total	<u>\$427,778</u>
FTA	\$385,000
Local	\$42,778

### **8.3 Safe Streets and Roads for All (SS4A)**

#### **Objectives**

To produce a Safety Action Plan that meets the USDOT criteria for 88 jurisdictions in a six-county region with a goal of vision zero.

#### **Previous Work**

- This project began in July 2023.

#### **Proposed Work**

- Convene an oversight committee
- Assess current policies and practices for opportunities to prioritize transportation safety
- Coordinate compilation, review, and adoption of a regional set of data-supported projects with emphasis on low-cost high-impact strategies and innovative technologies that promote safety and equity
- Establish a performance monitoring system
- Update previously conducted crash data analysis for all roadways including interstate highways
- Expand engagement and outreach to community groups
- Identify and collaborate with underserved communities and analyze equity impacts of proposed strategies and projects
- Grant administration

#### **Products**

- Task reports
- Final report

#### **Staffing**

RPCGB, direct contract labor, and/or third-party contractors for activities, and organizations

#### **Timeline for Proposed Work**

Ongoing activities throughout the fiscal year

#### **Financial Responsibility**

Total	<u>\$387,500</u>
FHWA	\$310,000
Local	\$77,500

## 8.4 Strengthening Mobility and Revolutionizing Transportation (SMART)

### Objectives

To build a community and data-driven platform to revitalize regional public transportation services with a goal to convert existing public transportation systems in Central Alabama into a fully integrated mobility system consisting of Bus Rapid Transit (BRT), fixed-route transit, on-demand shuttles, and demand response services

### Previous Work

- This project began in June 2023

### Proposed Work

- Grant administration
- Community engagement
- Hardware preparation
- Cyberinfrastructure development
- Data collection and analysis
- System planning and validation
- Customize high-fidelity simulator

### Products

- Task reports
- Final product

### Staffing

RPCGB, direct contract labor, and/or third-party contractors for activities, and organizations

### Timeline for Proposed Work

Ongoing activities throughout the fiscal year

### Financial Responsibility

Total	<u>\$1,492,204</u>
FHWA	\$1,492,204
Local	\$0

## 8.5 Distracted Driving Outreach and Education – UAB TRIP Lab

### Objective

To help the nation achieve a significant reduction in the rate of transportation-related deaths, injuries, and resulting disabilities, particularly in the southeastern United States

### Previous Work

- Educate young drivers about the consequences of distracted driving

### Proposed Work

- Expand the education and outreach efforts of the TRIP Laboratory at the University of Alabama at Birmingham.

### Products

- Progress reports

### Staffing

RPCGB, direct contract labor, and/or third-party contractors for activities, and organizations

### Timeline for Proposed Work

Ongoing activities throughout the fiscal year

### Financial Responsibility

Total	<u>\$200,000</u>
CRRSAA	\$200,000
Local	0

## 8.6 Technical Assistance Safety Project Planning

### Objectives

To provide technical assistance to local governments for safety project planning

### Previous Work

- Managed and provided assistance to the Technical Assistance for Safety Project Planning (TASPP)

### Proposed Work

- Assist local governments to identify and analyze roadways and intersections that have safety concerns.
- Assessment of Safety Data
- Outreach and Education
- Provide Technical Assistance to jurisdictions on an as needed basis and maintain a contact log

### Products

- Analysis summaries
- Technical Memoranda

### Staffing

RPCGB, direct contract labor, and/or third-party contractors for activities, and organizations

### Timeline for Proposed Work

Ongoing activities throughout the fiscal year

### Financial Responsibility

Total	<u>\$275,000</u>
CRRSAA	\$275,000
Local	0



# APPENDICES

## LIST OF ACRONYMS

ADEM .....	Alabama Department of Environmental Management
ALDOT .....	Alabama Department of Transportation
APCA.....	Alabama Partners for Clean Air
BJCTA.....	Birmingham Jefferson County Transit Authority
CMAQ.....	Congestion Mitigation Air Quality
CPG.....	FHWA and FTA Consolidation of Planning Fund
CTP .....	Comprehensive Transportation Plan
EPA .....	Environmental Protection Agency
FAST Act .....	Fixing America's Surface Transportation Act
FHWA .....	Federal Highway Administration
FTA .....	Federal Transit Administration
GHG.....	Greenhouse Gases
GIS .....	Geographic Information System
HSCTP .....	Human Services Coordinated Transportation Plan
IAC.....	Interagency Consultation
IIJA.....	Infrastructure Investment and Jobs Act
JCDH .....	Jefferson County Department of Health
LAP .....	Language Assistance Plan
LEP.....	Limited English Proficiency
LRTP.....	Long Range Transportation Plan
MAP-21 .....	Moving Ahead for Progress in the 21 <sup>st</sup> Century Act
MOVES2014a .....	Motor Vehicle Emissions Simulator
MPA.....	Metropolitan Planning Area
MPO .....	Metropolitan Planning Organization
NEPA.....	National Environmental Policy Act of 1969
PL.....	Federal Highway Administration Planning Funds
RTP .....	Regional Transportation Plan
SLS .....	State or Local Share
SRTS.....	Safe Routes to School
STIP.....	State Transportation Improvement Program
STP.....	Surface Transportation Program
STPBH.....	Surface Transportation Program for Birmingham
TAP .....	Transportation Alternatives Program
TAZ .....	Traffic Analysis Zones
TIP .....	Transportation Improvement Program
USDOT .....	U.S. Department of Transportation
VMT.....	Vehicle Miles Traveled





**TABLE 1  
UNIFIED PLANNING WORK PROGRAM FY 2024  
(Organizational Responsibility) - Federal Dollars Only**

TASKS		PL-FHWA/ FTA/USDOT/ CRRSAA	RPC	STATE PLANNING & RESEARCH (SPR)	CONTRACTOR	TOTAL FEDERAL
<b>1.0 ADMINISTRATION</b>						
1.1	MPO Administration	\$240,663	\$240,663			\$240,663
1.2	Unified Planning Work Program	\$20,000	\$20,000			\$20,000
1.3	Capital and Operating Purchases	\$89,092			\$500 3D Analyst 2.3	\$89,092
					\$3,500 Adobe Creative Cloud/Pro 2.2	
					\$45,000 Aerial Imagery, LiDAR & Planimetric Data 2.3	
					\$9,000 ArcMap Std/ArcGIS Pro Std 2.3	
					\$1,200 ArcMap Basic/ArcGIS Pro Basic 2.3	
					\$5,000 ArcGIS Online/ArcGIS Pro 2.3	
					\$5,000 ArcGIS Urban 2.3	
					\$5,000 ArcServer Enterprise 2.3	
					\$1,400 CommunityViz 2.2	
					\$8,000 Data Axle 2.1	
					\$5,500 Equipment for Planning 2.3	
					\$1,000 ESRI Community Analyst 2.3	
					\$500 Geostatistical Analyst 2.3	
					\$2,500 LRS Data Acquisitions 2.2	
					\$1,100 Maxwell Render Full Suite 6.2	
					\$3,000 MioVision Data Processing 5.6	
					\$500 Network Analyst 2.3	
					\$1,100 SketchUp Pro 6.2	
					\$5,000 Southern Exposure Information 2.2	
					\$500 Spatial Analyst 2.3	
					\$5,000 Strava Metro 5.4	
					\$1,000 Tableau Analytics 2.2	
					\$800 Woods and Poole 2.2	
					\$265 X Tools Pro 2.3	
					\$89,092 (Total x .8)	
1.4	Education and Training	\$100,000	\$100,000			\$100,000
<b>2.0 PLANNING INFORMATION</b>						
2.1	Data Collection and Management	\$175,000	\$120,000		\$55,000 Third Party Contractor	\$175,000
2.2	Data Analysis and Forecasting	\$50,000	\$50,000			\$50,000
2.3	Geographic Information Systems	\$50,000	\$50,000			\$50,000
2.4	Model Development Program	\$125,000	\$85,000		\$40,000 Third Party Contractor	\$125,000
<b>3.0 PUBLIC INVOLVEMENT</b>						
3.1	Public Involvement and Outreach	\$30,000	\$30,000			\$30,000

**TABLE 1 (continued)**

TASKS		PL-FHWA/ FTA/USDOT/ CRRSAA	RPC	STATE PLANNING & RESEARCH (SPR)	CONTRACTOR			TOTAL FEDERAL
<b>4.0 ENVIRONMENTAL PROCESS PLANNING</b>								
4.1	Air Quality Planning		\$150,000		\$630,000	Alabama Partners for Clean Air		\$780,000
4.2	Environmental Consultation Process	\$1,000	\$1,000					\$1,000
4.3	Advanced Planning, Programming, and Logical Engineering (APPLE)		\$25,000		\$375,000	Third Party Contractor		\$400,000
4.4	Climate Change	\$1,000	\$1,000					\$1,000
<b>5.0 TRANSPORTATION SYSTEMS</b>								
5.1	Regional Transportation Plan	\$60,000	\$60,000					\$60,000
5.1.1	Air Quality Conformity Analysis and Reporting	\$35,000	\$35,000					\$35,000
5.1.2	Regional Transportation Plan Project Listing for Air Quality Conformity	\$10,000	\$10,000					\$10,000
5.2	Transportation Improvement Program (TIP)	\$150,000	\$150,000					\$150,000
5.2.1	Amend TIP Project Listings for Air Quality Conformity	\$1,500	\$1,500					\$1,500
5.3	Public Transportation Planning	\$40,000	\$40,000					\$40,000
5.4	Freight Planning	\$9,500	\$9,500					\$9,500
5.5	Transportation System Performance Management and Monitoring	\$70,000	\$70,000		\$230,400	Third Party Contractor		\$300,400
5.6	Transportation Safety Planning	\$50,000	\$50,000					\$50,000
5.7	Technical Assistance for Local Communities and Agencies	\$35,000	\$25,000		\$10,000	Third Party Contractor		\$35,000
5.8	Complete Streets	\$112,000	\$112,000					\$112,000
<b>6.0 PROGRAMS AND TECHNICAL ASSISTANCE</b>								
6.1	CommuteSmart Program (Rideshare)		\$685,000		\$400,000	Enterprise		\$1,300,000
					\$150,000	Marketing/Media		
					\$65,000	Third party contractor		
6.2	Building Communities Program		\$500,000		\$300,000	Third party contractor		\$800,000
<b>7.0 ADA COMPLIANCE</b>								
7.1	ADA Compliance	\$20,000	\$10,000		\$10,000	Third party contractor		\$20,000
<b>8.0 PLANNING GRANTS</b>								
8.1	FTA Section 5310 Grant Program	\$2,052,803	\$100,000		\$1,952,803	Subrecipient capital projects		\$2,052,803
8.2	Areas of Persistent Poverty	\$385,000	\$20,000		\$365,000	Third party contractor		\$385,000
8.3	Safe Streets and Roads for All (SS4A)	\$310,000	\$30,000		\$280,000	Third party contractor		\$310,000
8.4	Strengthening Mobility and Revolutionizing Transportation (SMART)	\$1,492,204	\$169,000		\$1,323,204	Third party contractors		\$1,492,204
8.5	Distracted Driving Outreach & Education - UAB TRIP Lab	\$200,000			\$200,000	Third party contractor		\$200,000
8.6	Technical Assistance Safety Project Planning	\$275,000			\$275,000	Third party contractor		\$275,000
<b>STATE PLANNING AND RESEARCH FUNDING (SPR)</b>								
	SPR			\$108,000				\$108,000
<b>TOTALS</b>		<b>\$6,189,762</b>	<b>\$2,949,663</b>	<b>\$108,000</b>	<b>\$6,750,499</b>			<b>\$9,808,162</b>

PL = \$1,193,562 (annual FY 2024 mark) + \$281,193 carryover from FY 2022  
 FHWA PL and FTA 5303 planning funds have been consolidated into the PL-FHWA/FTA category

**TABLE 2  
UNIFIED PLANNING WORK PROGRAM FY 2024  
(Funding Sources)**

TASKS		PL-FHWA/FTA/USDOT/ CRRSAA:SLS	STP:SLS	CMAQ: SLS	ALDOT SUPPORT:SLS	TOTAL FEDERAL:SLS
<b>1.0 ADMINISTRATION</b>						
1.1	MPO Administration	\$240,663	\$60,166			\$240,663 \$60,166
1.2	Unified Planning Work Program	\$20,000	\$5,000			\$20,000 \$5,000
1.3	Capital and Operating Purchases	\$89,092	\$22,273			\$89,092 \$22,273
1.4	Education and Training	\$100,000	\$25,000			\$100,000 \$25,000
<b>2.0 PLANNING INFORMATION</b>						
2.1	Data Collection and Management	\$175,000	\$43,750			\$175,000 \$43,750
2.2	Data Analysis and Forecasting	\$50,000	\$12,500			\$50,000 \$12,500
2.3	Geographic Information Systems	\$50,000	\$12,500			\$50,000 \$12,500
2.4	Model Development Program	\$125,000	\$31,250			\$125,000 \$31,250
<b>3.0 PUBLIC INVOLVEMENT</b>						
3.1	Public Involvement and Outreach	\$30,000	\$7,500			\$30,000 \$7,500
<b>4.0 ENVIRONMENTAL PROCESS PLANNING</b>						
4.1	Air Quality Planning				\$780,000 \$195,000	\$780,000 \$195,000
4.2	Environmental Consultation Process	\$1,000	\$250			\$1,000 \$250
4.3	Advanced Planning, Programming, and Logical Engineering (APPLE)			\$400,000 \$100,000		\$400,000 \$100,000
4.4	Climate Change	\$1,000	\$250			\$1,000 \$250
<b>5.0 TRANSPORTATION SYSTEMS</b>						
5.1	Regional Transportation Plan	\$60,000	\$15,000			\$60,000 \$15,000
5.1.1	Air Quality Conformity Analysis and Reporting	\$35,000	\$8,750			\$35,000 \$8,750
5.1.2	Regional Transportation Plan Project Listing for Air Quality Conformity	\$10,000	\$2,500			\$10,000 \$2,500
5.2	Transportation Improvement Program (TIP)	\$150,000	\$37,500			\$150,000 \$37,500
5.2.1	Amend TIP Project Listings for Air Quality Conformity	\$1,500	\$375			\$1,500 \$375
5.3	Public Transportation Planning	\$40,000	\$10,000			\$40,000 \$10,000
5.4	Freight Planning	\$9,500	\$2,375			\$9,500 \$2,375
5.5	Transportation System Performance Management and Monitoring	\$70,000	\$17,500	\$230,400 \$57,600		\$300,400 \$75,100
5.6	Transportation Safety and Security Planning	\$50,000	\$12,500			\$50,000 \$12,500
5.7	Technical Assistance for Local Communities and Agencies	\$35,000	\$8,750			\$35,000 \$8,750
5.8	Complete Streets	\$112,000	\$28,000			\$112,000 \$28,000
<b>6.0 PROGRAMS AND TECHNICAL ASSISTANCE</b>						
6.1	CommuterSmart Program (Rideshare)			\$1,300,000 \$0		\$1,300,000 \$0
6.2	Building Communities Program			\$800,000 \$200,000		\$800,000 \$200,000
<b>7.0 ADA COMPLIANCE</b>						
7.1	ADA Compliance	\$20,000	\$5,000			\$20,000 \$5,000
<b>8.0 PLANNING GRANTS</b>						
8.1	FTA Section 5310 Grant Program	\$2,052,803	\$488,201			\$2,052,803 \$488,201
8.2	Areas of Persistent Poverty (AoPP)	\$385,000	\$42,778			\$385,000 \$42,778
8.3	Safe Streets and Roads for All (SS4A)	\$310,000	\$77,500			\$310,000 \$77,500
8.4	Strengthening Mobility and Revolutionizing Transportation (SMART)	\$1,492,204	\$0			\$1,492,204 \$0
8.5	Distracted Driving Outreach & Education - UAB TRIP Lab	\$200,000	\$0			\$200,000 \$0
8.6	Technical Assistance Safety Project Planning	\$275,000	\$0			\$275,000 \$0
<b>STATE PLANNING AND RESEARCH FUNDING (SPR)</b>						
					\$108,000 \$27,000	\$108,000 \$27,000
<b>TOTALS</b>		<b>\$6,189,762</b>	<b>\$977,168</b>	<b>\$2,730,400</b>	<b>\$357,600</b>	<b>\$780,000 \$195,000 \$108,000 \$27,000 \$9,808,162 \$1,556,768</b>

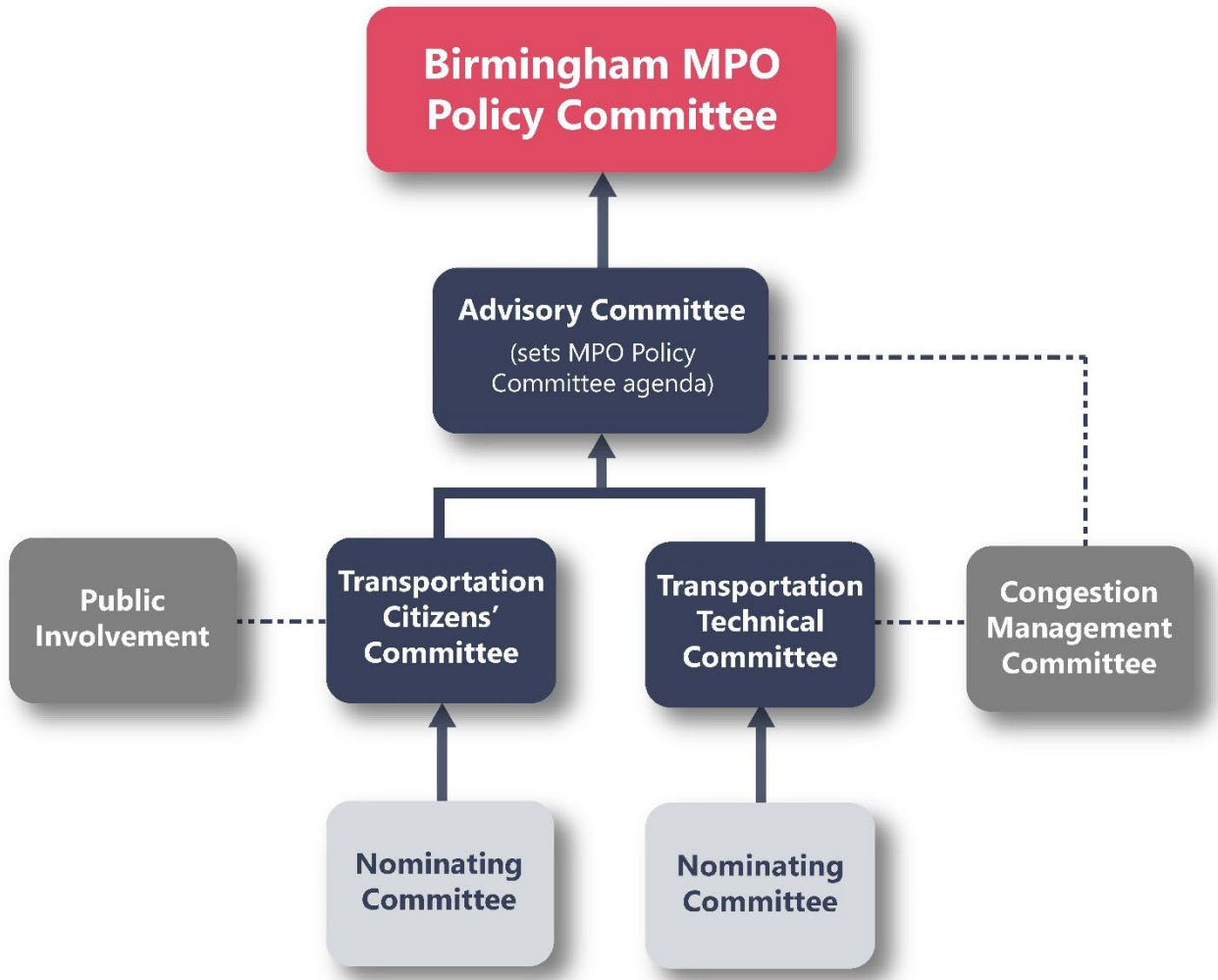
PL = \$1,193,562 (annual FY 2024 mark) + \$281,193 carryover from FY 2022

FHWA PL and FTA 5303 planning funds have been consolidated into the PL-FHWA/FTA category

MPOs may carry over funds for 3 years. The oldest unexpended funds will be returned to the funding pool for reallocation.



## STRUCTURE OF THE BIRMINGHAM MPO



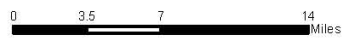
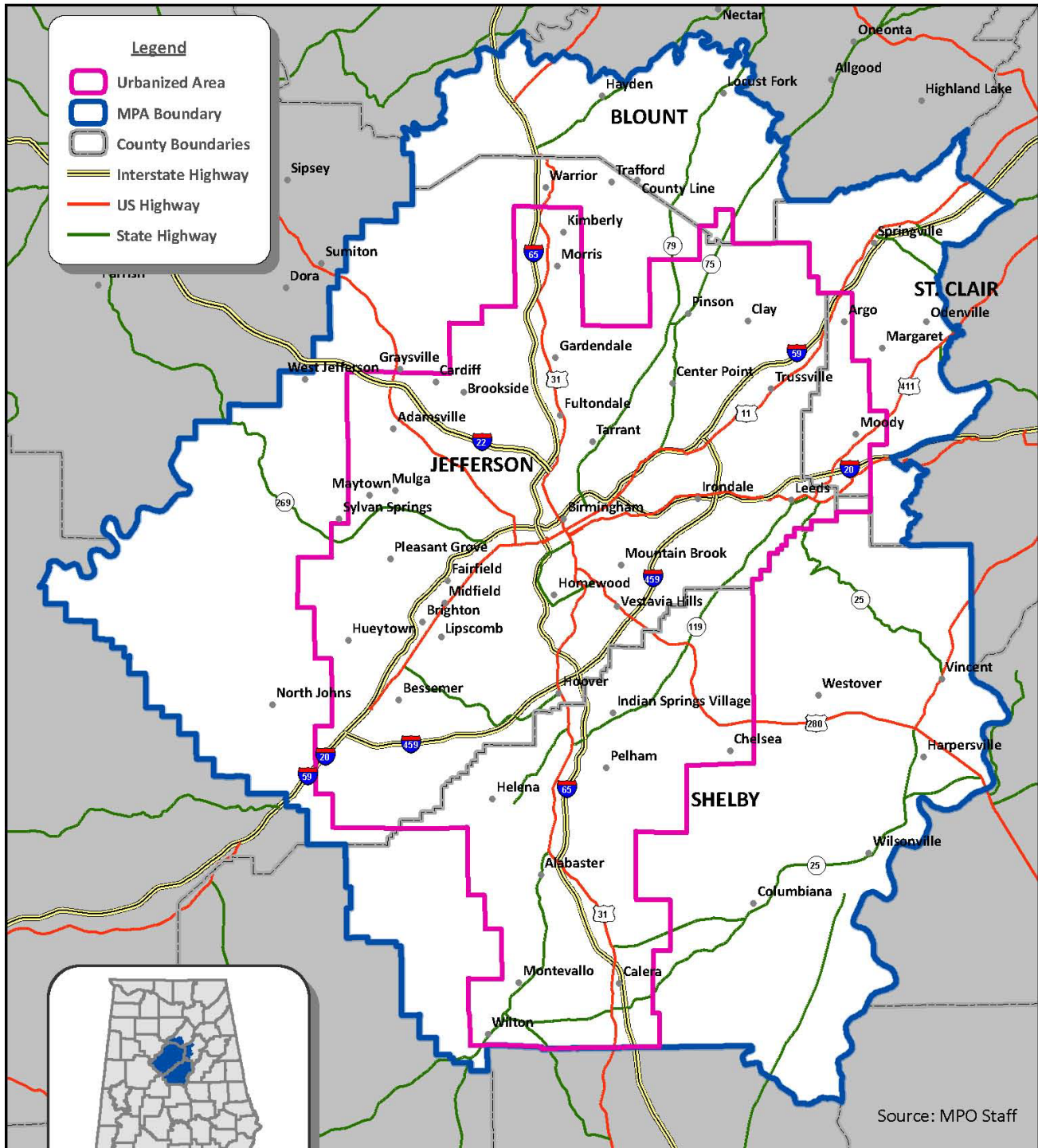
The staff of the Regional Planning Commission of Greater Birmingham also serves as staff to the Birmingham MPO.

- Decision Makers
- Voting Committees
- Formal Subcommittees
- Ad Hoc Advisory Committees
- Formal Connections
- Ad Hoc Connections

# METROPOLITAN PLANNING AREA/TRANSPORATION MANAGEMENT AREA MAP

## BIRMINGHAM MPO AREA

### METROPOLITAN PLANNING AREA AND URBANIZED AREA BOUNDARY



\*Based on 2010 Census data.  
May, 2013 - G:\ProjectData\MPO\MPA  
2010MPA0411.mxd

## **PLANNING FACTORS**

1. Support the economic vitality of the metropolitan area, especially by enabling global competitiveness, productivity, and efficiency
2. Increase the safety of the transportation system for motorized and nonmotorized users
3. Increase the security of the transportation system for motorized and nonmotorized users
4. Increase accessibility and mobility of people and freight
5. Protect and enhance the environment, promote energy conservation, improve the quality of life, and promote consistency between transportation improvements and state and local planned growth, housing, and economic development patterns
6. Enhance the integration and connectivity of the transportation system across and between modes for people and freight
7. Promote efficient system management and operation
8. Emphasize the preservation of the existing transportation system
9. Improve the resiliency and reliability of the transportation system and reduce or mitigate stormwater impacts of surface transportation
10. Enhance travel and tourism

## LIVABILITY INDICATORS

### 1. Provide more transportation choices

Develop safe, reliable, and economical transportation choices to decrease household transportation costs, reduce our nation's dependence on foreign oil, improve air quality, reduce greenhouse gas emissions, and promote public health.

Performance Indicator: **Mode Share** – percent of travelers using different travel modes

### 2. Promote equitable, affordable housing

Expand location- and energy-efficient housing choices for people of all ages, incomes, races, and ethnicities to increase mobility and lower the combined cost of housing and transportation.

Performance Indicator: **Jobs/Housing Balance** – total number of jobs/total housing by area

### 3. Enhance economic competitiveness

Improve economic competitiveness through reliable and timely access to employment centers, educational opportunities, services, and other basic needs by workers, as well as expanded business access to markets.

Performance Indicator: **Travel Time Index** – congested versus free-flow travel time

### 4. Support existing communities

Target federal funding toward existing communities—through strategies like transit-oriented, mixed-use development, and land recycling—to increase community revitalization and the efficiency of public works investments and to safeguard rural landscapes.

Performance Indicator: **Percentage of Projects that Include Air Quality Mitigation** -

### 5. Coordinate and leverage federal policies and investment

Align federal policies and funding to remove barriers to collaboration, leverage funding, and increase the accountability and effectiveness of all levels of government to plan for future growth, including making smart energy choices such as locally generated renewable energy.

Performance Indicator: **Project Funding Diversity** – percent of transportation projects utilizing multiple funding sources (federal, state, local)

### 6. Value communities and neighborhoods

Enhance the unique characteristics of all communities by investing in healthy, safe, and walkable neighborhoods—rural, urban, or suburban.

Performance Indicator: **Partnerships and Public Involvement** – number of partnerships and documentation of public involvement activities



## CURRENT AND POTENTIAL PLANNING STUDIES

Completed and Ongoing Studies since October 2014 (sorted by sponsor then by title)

Sponsor	Title
ALDOT	Lakeshore Extension - completed April 2020
Alabaster	Alabaster Comprehensive Plan - completed March 2016
Alabaster	New Trails and Sidewalks Study - completed February 2022
Alabaster	SR 119 Overlay District and Design Guidelines - completed March 2017
Argo	Argo Traffic Study - completed April 2018
Argo	Argo Comprehensive Plan and Zoning Ordinance - completed Sept 2023
Bessemer	Bessemer Comprehensive Plan - ongoing
Birmingham	16th Street Pedestrian Study - 2023
Birmingham	20th Street Pedestrian Mall - completed January 2018
Birmingham	Avenue F Bridge Study - completed November 2019
Birmingham	Birmingham City Center Master Plan - completed March 2020
Birmingham	Birmingham Sidewalk Master Plan - completed 2016
Birmingham	Built Environmental & Health Project (SHAPE BHAM) - completed November 2017
Birmingham	Built Environment and Health Expansion Project (SHAPE BHAM EXPANSION PROJECT) - completed Dec 2019
Birmingham	Citywide Transportaton Plan - completed 2021
Birmingham	Crestwood Blvd Corridor Study - completed October 2021
Birmingham	Eastern Area Framework Plan - completed August 2018
Birmingham	Grants Mill Road Extension Study - ongoing
Birmingham	North Birmingham Framework Plan - March 2015
Birmingham	Northeastern Area Framework Plan - completed July 2017
Birmingham	Northside / Southside Framework Plan - completed early 2021
Birmingham	Pavement Management Plan - completed 2021
Birmingham	Pratt - Ensley Framework Plan - completed September 2018
Birmingham	Shades Creek to Eastwood Trail Study - 2023
Birmingham	Southern Area Framework Plan - completed April 2023
Birmingham	Southwest Area Framework Plan - completed July 2017
Birmingham	Titusville Framework Plan - completed February 2015
Birmingham	Transportation Capital Investment Plan, Reconnecting Communities Program - ongoing
Birmingham	Vulcan Greenway Study - completed March 2018
Birmingham	Western Area Framework Plan - completed May 2015
BJCTA	Commuter Rail Study - completed August 2019
BJCTA	New Seervice Study - ongoing
BJCTA	Transit Development Plan - completed May 2017
BJCTA	Transit Oriented Development Pilot Program – ongoing
Calera	Calera Comprehensive Plan - completed June 2021
Calera	Downtwon Calera Rezoning Project - completed April 2021
Calera	SR 25 Relocation Study - completed September 2019
Center Point	Center Point Comprehensive Plan - completed April 2017
Center Point	Zoning Ordinance and Sign Ordinance Updates - completed July 2019
Chelsea	Chelsea Comprehensive Plan - completed July 2020
Chelsea	Chelsea Highway 280 Overlay District - completed February 2019
Chelsea	Chesser Drive Study - completed March 2021
Chelsea	New Road and Railroad Overpass Study - 2023
Chelsea	US 280 Traffic Operations Study - completed July 2022
Fairfield	Fairfield Master Plan - completed March 2022
Fultondale	Fultondale Comprehensive Plan - completed September 2023
Gardendale	Gardendale Comprehensive Plan - completed October 2014
Gardendale	Gardendale New Road Study - completed February 2018
Harpersville	Harpersville Town Master Plan - completed September 2021
Harpersville	Harpersville Town Center Overlay District - completed September 2023
Helena	Helena Comprehensive Plan - completed September 2023
Helena	Old Town Pedestrian Improvements Study - completed August 2022
Helena	School Intersections - completed August 2017

Sponsor	Title
Homewood	Citywide Sign Code Update - completed December 2019
Homewood	Central Avenue Study - completed May 2020
Homewood	Downtown Master Plan and Zoning Update - Master Plan completed Oct 2018; zoning completed August 2021
Homewood	Hollywood Blvd/US-280 Intersection Study - completed July 2018
Homewood	US-31 Pedestrian Improvement, Access Management and Operations Study - 2023
Hoover	Bicycle/Pedestrian Plan - completed July 2019
Hoover	Hoover Comprehensive Plan - completed July 2019
Irondale	Irondale Comprehensive Plan - completed April 2016
Irondale	Irondale Comprehensive Plan Update - completed December 2021
Irondale	Shades Creek Trail Study - 2023
Jefferson County	Acton Road Corridor Study - completed May 2017
Jefferson County	Bicycle/Pedestrian Plan - ongoing
Jefferson County	Cahaba River Road Study - completed April 2019
Jefferson County	Jefferson County Comprehensive Plan - ongoing
Jefferson County	Crosshaven Drive Corridor Study - completed January 2019
Jefferson County	Fultondale to Gardendale New Road Study - 2023
Leeds	US-78 Traffic Operations Study - ongoing
Leeds	Leeds Comprehensive Plan - ongoing
Montevallo	Montevallo Comprehensive Plan - completed July 2020
Moody	Moody Comprehensive Plan - completed September 2023
Moody	US-411 Intersections Study - 2023
Morris	Morris Comprehensive Plan - completed June 2022
Mountain Brook	Mountain Brook Sidewalks Study - completed August 2017
Mountain Brook	Mountain Brook Traffic Study - completed August 2018
Mountain Brook	Overton Road Corridor Study - ongoing
Mulga	Mulga Town Master Plan - completed May 2022
Pelham	Mixed-Use Zoning Districts - completed December 2020
Pelham	New Roads Study - completed 2021
Pelham	Pelham Comprehensive Plan - completed February 2020
Pelham	Pelham -Helena Connector Trail Study - 2023
Pelham	Pelham Greenway - completed April 2016
RPCGB	Active Transportation Plan - completed March 2019
RPCGB	Regional Freight Plan - completed March 2019
RPCGB	Roadway Ownership/Maintenance Study - ongoing
RPCGB	Safety Study - SR-119/Fulton Springs Road - completed November 2020
RPCGB	Travel Demand Model Enhancement Study - ongoing
RPCGB	US-31 Operations Analysis from Amphitheater Rd. in Pelham to S. Colonial Pkwy. in Alabaster - completed 2021
RPCGB	Technical Assistance Safety Project Planning - ongoing
Shelby County	Bicycle/Pedestrian Plan - completed 2018
Shelby County	CR-47 Intersection Improvements - completed September 2017
Shelby County	Dunnavant Valley Trail - completed October 2017
Shelby County	Shelby County Comprehensive Plan - completed April 2023
Shelby County/Columbiana	SR-70 Corridor Study - Columbiana - 2022
St. Clair County	Kelly Creek Road Interchange Study - ongoing
St. Clair County	Springville Traffic Study - completed December 2018
St. Clair County	US-411 Interchange Study - ongoing
Trussville	Chalkville Road/Chalkville Mtn. Rd Corridor Study - 2023
Trussville	Pinchgut Creek Trail Study - 2023
UAB	UAB – North South Streets Study - completed March 2019
UAB	UAB – Road Diets - completed September 2016
Vestavia Hills	Traffic Study - completed July 2019
Vincent	Vincent Comprehensive Plan - ongoing

## Potential Studies

Sponsor	Title
Alabaster	US-31/SR-119/Railroad Crossing Study
Alabaster	Alabaster Comprehensive Plan Update
Bessemer	Bessemer Zoning Ordinance Updates
Bessemer/BJCTA	Transit Station
Birmingham	Eastwood to Mountain Brook Shades Creek Trail Study
Homewood	Edgewood Study
Homewood	Homewood Zoning Ordinance Updates
Margaret	Margaret Comprehensive Plan
Odenville	Intersection Study
RPCGB	Transportation Systems Management and Operations (TSMO) Plan Update
St. Clair County	St. Clair County Railroad Crossing Study

## Statewide Plans ([www.dot.state.al.us](http://www.dot.state.al.us))

Sponsor	Title
ALDOT	Alabama Public Involvement Plan
ALDOT	Public Transportation Agency Safety Plan
ALDOT	Alabama Rail Plan
ALDOT	Transportation Asset Management Plan (TAM)
ALDOT	Statewide Airport System Plan
ALDOT	Statewide Bicycle and Pedestrian Plan
ALDOT	Statewide Freight Plan
ALDOT	Statewide Highway Safety Plan
ALDOT	Statewide Management Plan
ALDOT	Statewide Transportation Plan

Note: for more information on any of these studies, contact the project sponsor or the RPCGB

**CERTIFICATE OF INDIRECT COSTS**

This is to certify that I have reviewed the indirect cost rate proposal prepared and maintained herewith and to the best of my knowledge and belief:

(1) All costs included in this proposal dated 08/30/2023 [identify date indirect cost rate proposal was finalized] to establish indirect costs rate(s) for Fiscal Year 2024 [identify start/end dates for the fiscal year covered by the indirect cost rate] are allowable in accordance with the requirements of the Federal award(s) to which they apply and OMB Uniform Administrative Requirements, Cost Principles, and Audit Requirements for Federal Awards (codified at 2 C.F.R. Part 200) Unallowable costs have been adjusted for in allocating costs as indicated in the cost allocation plan.

(2) All costs included in this proposal are properly allocable to Federal awards on the basis of a beneficial or causal relationship between the expenses incurred and the agreements to which they are allocated in accordance with applicable requirements. Further, the same costs that have been treated as indirect costs have not been claimed as direct costs. Similar types of costs have been accounted for consistently and the Federal Government will be notified of any accounting changes that would affect the predetermined rate.

(3) The indirect cost rate calculated within the proposal is 78% [identify rate(s)], which was calculated using a direct cost base type of Salary-Fringe [identify type of direct cost base – Salary & Fringe, MTDC, etc.]. The calculations were based on actual costs from fiscal year 2023 to obtain a federal indirect cost billing rate for fiscal year 2024.

(4) All documentation supporting the indirect cost rate identified above must be retained by the Recipient. This rate should be reviewed and validated as part of the Recipient’s annual financial audit.

Subject to the provisions of the Program Fraud Civil Remedies Act of 1986, (31 USC 3801 et seq.), the False Claims Act (18 USC 287 and 31 USC 3729); and the False Statement Act (18 USC 1001), I declare to the best of my knowledge that the foregoing is true and correct.

Organization Name: Regional Planning Commission of Greater Birmingham  
Signature: Allison McGuire  
Name of Authorized Official: Allison McGuire  
Title: Deputy Executive Director  
Email Address and Phone: amcguire@rpcgb.org  
Date of Execution: 12/13/2023

**RPCGB FY 2024  
INDIRECT (ADMINISTRATIVE) & FRINGE COST CALCULATION**

<u>STATEMENT OF FRINGE BENEFIT RATE</u>	<b>0.5875</b>
Release Time (Agency Totals):	
Vacation Leave	\$ 335,150
Sick Leave	\$ 235,116
Holidays	\$ 297,419
Other Leave	<u>\$ 50,000</u>
Total Release Time	\$ 917,685
Benefits Paid	
Matching FICA	\$ 377,010
Health Insurance	\$ 792,036
Retirement	\$ 390,254
Life	\$ 25,084
Unemployment	\$ 5,000
Workman's Comp	<u>\$ 12,000</u>
Total Benefits Paid	\$ 1,601,383
Total Release Time and Benefits	\$ 2,519,068
Fringe Benefit Rate	
Total Release & Benefits	\$ 2,519,068
Total Agency Salaries	\$ 4,287,581
	divided by
	equals <u><b>58.753%</b></u>

**INDIRECT SALARIES & FRINGE**

	Planning	Aging	Other (g&a)	Total
Indirect salaries, from timesheets	A 39,990.41	182,546.34	650,671.84	873,208.59
Fringe rate	B 58.753%	58.753%	58.753%	
Fringe [A*B]	C 23,495.43	107,250.84	382,287.05	513,033.32
Indirect personnel costs [A+C]	D <u>63,485.85</u>	<u>289,797.17</u>	<u>1,032,958.89</u>	<u>1,386,241.91</u>
RPC indirect expenses, allocated by man-hours:				
Staff development	E 107,307.69	-	47,692.31	155,000.00
Repair, maintenance, utilities	F 31,153.85	-	13,846.15	45,000.00
Contractual services	G 383,223.71	-	170,321.65	553,545.36
Commodities	H 20,769.23	-	9,230.77	30,000.00
Contract labor	I 31,153.85	-	13,846.15	45,000.00
Less Sabre	I2 -	-	-	-
Net indirect expenses	J <u>573,608.33</u>	<u>-</u>	<u>254,937.03</u>	<u>828,545.36</u>
Indirect personnel costs [from D]	K 715,125.38		317,833.50	1,032,958.89
Indirect personnel costs from timesheets [from L	63,485.85	289,797.17		353,283.02
Total indirect expenses [J+K+L]	M <u>1,352,219.56</u>	<u>289,797.17</u>	<u>572,770.54</u>	<u>2,214,787.27</u>
Direct salaries, from timesheets	N 1,275,331.58	2,139,040.48		3,414,372.06
Fringe rate [same as B]	O 0.59	0.59		0.59
Fringe [N*O]	P 749,291.30	1,256,743.29		2,006,034.59
Total direct & fringe [N+P]	Q <u>2,024,622.88</u>	<u>3,395,783.77</u>		<u>5,420,406.64</u>
Percent of Line [Q] to total	R 37.35%	62.65%		100.00%
Allocation of g&a [M] based on [R]	S 213,940.47	358,830.07		572,770.54
Total indirect expenses [M+S]	T <u>1,566,160.03</u>	<u>648,627.24</u>		<u>2,214,787.27</u>
Indirect allocation rate [T/Q]	<u>77.36%</u>	<u>19.10%</u>		