



List of Authorized Projects FY2020

Birmingham Metropolitan Planning Area

Prepared by the Regional Planning Commission of
Greater Birmingham (RPCGB)
Staff to the MPO

December 2020

Purpose of this Report

The federal metropolitan transportation planning statute states:

“In metropolitan planning areas, on an annual basis, no later than 90 calendar days following the end of the program year, the State, public transportation operator(s), and the MPO(s) shall cooperatively develop a listing of projects (including investments in pedestrian walkways and bicycle transportation facilities) for which funds under 23 U.S.C. or 49 U.S.C. Chapter 53 were obligated in the preceding program year.”

The Federal Highway Administration defines obligation as the federal government’s legal commitment (promise) to pay or reimburse states or other entities for the federal share of a project’s eligible costs. Thus, an obligated project is one that has been approved by the federal government for reimbursement, though not necessarily reimbursed yet. Obligated projects were not necessarily initiated or completed during this year. The obligated cost reflected in this report also may not equal final project cost. This report responds to the directive set forth in statute. It lists all federally-funded transportation projects in the Birmingham Metropolitan Planning Area (MPA) that were obligated (also referred to as "authorized") in federal fiscal year 2020 (October 1, 2019 to September 30, 2020).

Background

The Birmingham Metropolitan Planning Organization (MPO) is an association of 53 local governments in the Birmingham metro area, promotes a regional perspective towards the metropolitan area’s transportation issues and addresses those issues through cooperative local government action. The MPO boundary includes all of Jefferson and Shelby Counties and portions of Blount and St. Clair Counties (see map on following page). Federal transportation legislation requires, as a condition for spending federal highway or transit funds in urbanized areas, the designation of an MPO. The MPO has responsibility for planning, programming, and coordinating federal investments. The MPO process creates a partnership among state, local government, and transit operators in the region.

Transportation Improvement Program (TIP)

The Transportation Improvement Program (TIP) is a document which provides a list of projects to be initiated within a four year period. The TIP only includes projects for which funding has been identified using current available or anticipated revenues. The plan is developed by the Birmingham Metropolitan Planning Organization (MPO) in conjunction with local transit providers, jurisdictions, and agencies that are recognized as members of the MPO. The TIP is a direct subset of the 2045 Regional Transportation Plan (for the rest of the document referenced as the RTP), which is the MPO’s Long Range Transportation Plan. The TIP must be approved by the MPO, the Alabama Department of Transportation (ALDOT), and the Federal Highway Administration

(FHWA). Once approved locally, the TIP is forwarded to the Alabama Department of Transportation where it becomes a part of the Statewide Transportation Improvement Program (STIP).

MPO Organization, History and Boundaries

A Metropolitan Planning Organization is an organization created to carry out the transportation planning activities in the MPA. Each urbanized area in the United States with a population of 50,000 or more is required by the Federal Highway Act of 1962 to establish a Metropolitan Planning Organization. The Birmingham MPO was established soon after in 1963.

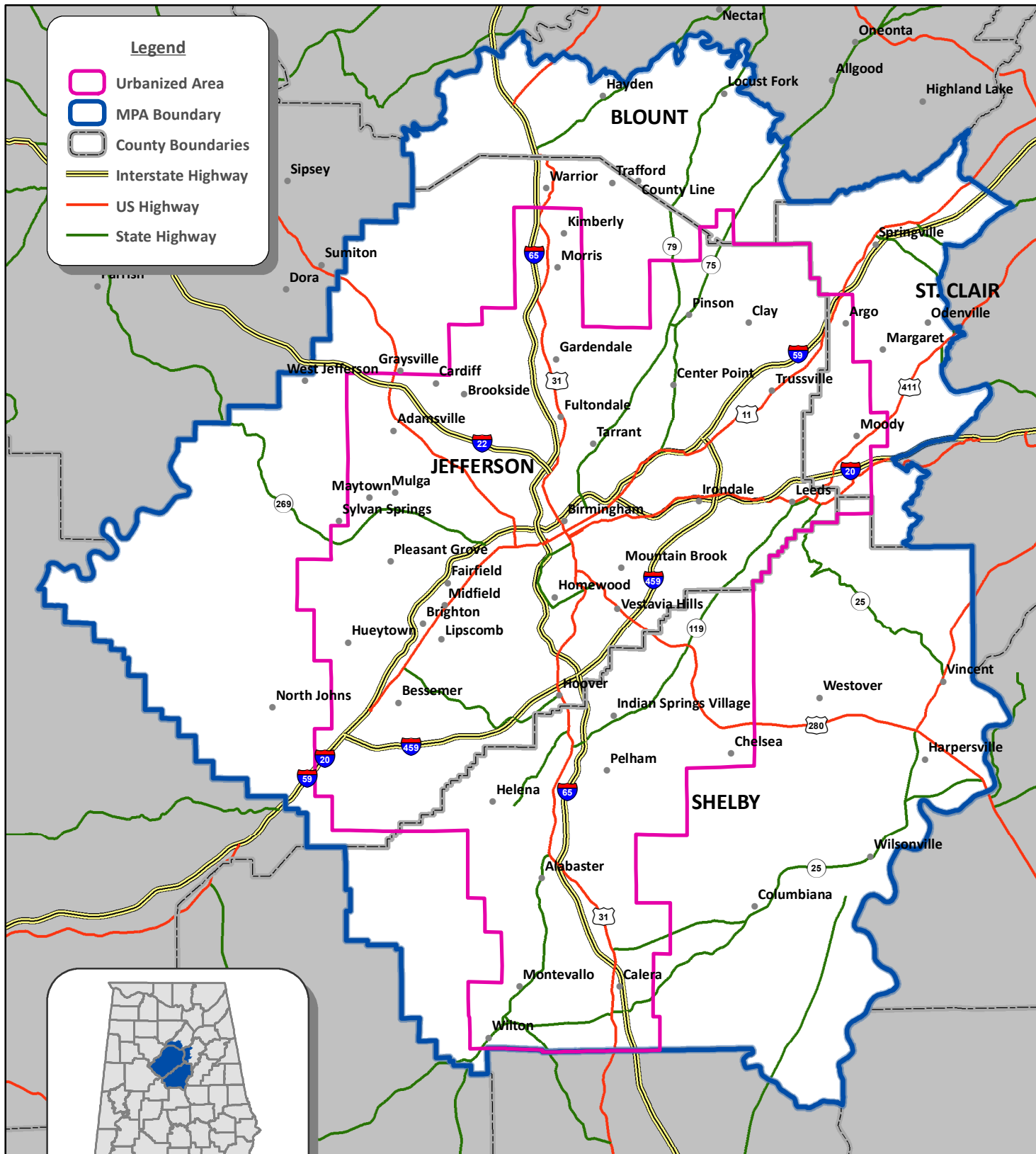
The goal of the Federal Highway Act of 1962 is to ensure that the transportation planning process and resulting transportation network are cohesive and functional for urban areas that have grown together. In other words, transportation planning needs to be regional in scope because transportation systems cut across governmental boundaries. Urbanized Areas are designated decennially by the United States Census Bureau and are a reflection of urban growth based on population density, not political boundaries. For this reason, MPOs are responsible for the transportation planning process in Urbanized Areas and not single political entities.

On January 13, 1992, the boundaries of the Birmingham metropolitan planning area were expanded to include the geographic areas of Jefferson and Shelby Counties in accordance with the Clean Air Act Amendments of 1990 (CAAA). The boundaries did not change again until the data from the 2010 Census was analyzed. In 2012 the metropolitan planning area boundaries officially expanded to include portions of Blount and St. Clair Counties. These boundaries are based on the expected growth over the next 25 years and are formally reviewed by ALDOT and FHWA. The Birmingham Metropolitan Planning Organization (MPO) serves this planning area and is comprised of local government officials and representatives. Additionally, representatives from transportation authorities, such as the Birmingham - Jefferson County Transit Authority and the Alabama Department of Transportation, are included on this regional transportation policy board. They are joined by any member of the Blount, Jefferson, Shelby, or St. Clair County delegations serving on the legislature's Joint Highway Committee. There are currently forty-five voting members on the MPO.

FHWA and the Federal Transit Administration (FTA) have designated the Birmingham Urbanized Area as a Transportation Management Area (TMA). Federal Regulations (23 CFR 450.320) under the U.S. Department of Transportation require TMAs to develop and update a Congestion Management Process (CPM).

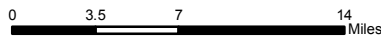
BIRMINGHAM MPO AREA

METROPOLITAN PLANNING AREA & URBANIZED AREA BOUNDARY



Legend

- Urbanized Area
- MPA Boundary
- County Boundaries
- Interstate Highway
- US Highway
- State Highway



*Based on 2010 Census data.
 May, 2013 - G:/ProjectData/MPO/MPA
 2010MPA8x11.mxd

Annual Listing of Obligated Projects

Sponsor: ALABASTER

Program	Table No.	FA Nbr.	Project Number	Scope	Length (miles)	Start Date	Type of Work	% Engineer Estimate	Fed. Obligated	Fed. Expenditure	Balance
ULBH	1	STPBH 0119(510)	100061286	RW	1.694	02/01/2020	ADDITIONAL ROADWAY LANES	\$2,954,400	\$2,954,400	\$772,987	\$2,181,413

Project Description: ADDITIONAL LANES ON SR-119 FROM MEADOWLARK PL TO CR-12 (WEST SIDE ONLY) THEN CONTINUING TO CR-26 (EAST AND WEST SIDES) - PHASE 1

Sponsor: ALDOT

Program	Table No.	FA Nbr.	Project Number	Scope	Length (miles)	Start Date	Type of Work	% Engineer Estimate	Fed. Obligated	Fed. Expenditure	Balance
BRN	3	BR 0005(517)	100002809	CN	0.681	02/28/2020	BRIDGE REPLACEMENT	\$8,842,584	\$7,924,001	\$1,097,887	\$6,826,114

Project Description: BRIDGE REPLACEMENT (BIN 007627) ON SR-5 OVER LOCUST FORK OF BLACK WARRIOR RIVER

COBR	2	BRZ 0518(251)	100068195	CN	0.000	02/28/2020	BRIDGE REPLACEMENT	\$1,368,379	\$1,727,239	\$226,411	\$1,500,828
------	---	------------------	-----------	----	-------	------------	--------------------	-------------	-------------	-----------	-------------

Project Description: BRIDGE REPLACEMENT ON CR-22 (DEANS FERRY ROAD) OVER CSX RAILROAD BIN 012072 - BCP 05-163-17

COBR1	2	BRZ 0518(251)	100068195	CN	0.000	02/28/2020	BRIDGE REPLACEMENT	\$1,368,379	\$130,000	\$326	\$129,674
-------	---	------------------	-----------	----	-------	------------	--------------------	-------------	-----------	-------	-----------

Project Description: BRIDGE REPLACEMENT ON CR-22 (DEANS FERRY ROAD) OVER CSX RAILROAD BIN 012072 - BCP 05-163-17

CORA	2	RABR 5819(251)	100069883	CN	0.000	07/31/2020	BRIDGE REHABILITATION	\$366,376	\$418,977	\$1,116	\$417,862
------	---	-------------------	-----------	----	-------	------------	-----------------------	-----------	-----------	---------	-----------

Project Description: HYDRO DEMOLISH AND REHABILITATE THE DECKS ON FOLLOWING BRIDGES: ON CR-10 (BIN 005311) OVER BIG BLACK CREEK (SITE 1); ON KELLY CREEK ROAD (BIN 008064) OVER KELLY CREEK (SITE 2) - SCCP 58-38-19

APD8E	4	APDF 1602(563)	100063385	SP	0.000	02/01/2020	UNCLASSIFIED	\$1,880,000	\$1,880,000	\$0	\$1,880,000
-------	---	-------------------	-----------	----	-------	------------	--------------	-------------	-------------	-----	-------------

Project Description: FY 2020 AND 2021 BIRMINGHAM NORTHERN BELTLINE WETLAND AND STREAM MITIGATION CREDITS

AQCM	13	CMAQ 0003(630)	100064506	PE	1.598	09/01/2020	STREETSCAPE	\$83,248	\$83,248	\$0	\$83,248
------	----	-------------------	-----------	----	-------	------------	-------------	----------	----------	-----	----------

Project Description: AUXILIARY LANES ON SR-3(US-31/RED MOUNTAIN EXPRESSWAY) BETWEEN HIGHLAND AVE AND 21ST AVE.

RACR	12	RACR-037-I59-010-PE ()	100064600	PE	2.800	08/01/2020	ADDITIONAL ROADWAY LANES	\$0	\$0	\$0	\$0
------	----	----------------------------	-----------	----	-------	------------	--------------------------	-----	-----	-----	-----

Project Description: RECONSTRUCTION AND LANE ADDITION ON I-59 FROM I-459 TO CR-10 (CHALKVILLE MOUNTAIN ROAD)

S130	11	RHPD RR17(909)	100066434	CN	0.000	07/15/2020	RR CROSSING IMPROVEMENTS	\$317,472	\$317,472	\$0	\$317,472
------	----	-------------------	-----------	----	-------	------------	--------------------------	-----------	-----------	-----	-----------

Project Description: INSTALL RAILROAD CROSSING DEVICES ON PILGREEN DRIVE IN CALERA DOT NO. 727 400E REF1323 (XVI-R) TO INCLUDE STANDARD MAST MOUNTED SIGNAL GATE BELL GCPS SIGNS

IM	3	IM I020(356)	100068066	CN	2.800	08/28/2020	PAVEMENT MINOR REHABILITATION	\$6,256,634	\$6,256,634	\$4,771	\$6,251,863
----	---	-----------------	-----------	----	-------	------------	-------------------------------	-------------	-------------	---------	-------------

Project Description: PAVEMENT REHABILITATION ON I-20 FROM EXIT 140 TO THE ST. CLAIR COUNTY LINE

IM	3	IM I020(357)	100068218	CN	4.983	08/28/2020	PAVEMENT MINOR REHABILITATION	\$12,035,899	\$12,035,899	\$833	\$12,035,066
----	---	-----------------	-----------	----	-------	------------	-------------------------------	--------------	--------------	-------	--------------

Project Description: PAVEMENT REHABILITATION ON I-20 FROM THE JEFFERSON COUNTY LINE TO 0.87 MILE EAST OF KELLY CREEK ROAD

Annual Listing of Obligated Projects

IM	3	IM-IMGR I022(315)	100068229	CN	13.085	04/24/2020	PREVENTATIVE MAINTENANCE LEVEL 1	\$10,123,277	\$8,631,153	\$4,072,811	\$4,558,342
Project Description: PAVEMENT REHABILITATION ON I-22 FROM THE WALKER COUNTY LINE TO COALBURG ROAD											
NH	3	NH 0038(541)	100068641	FM	7.308	01/31/2020	PREVENTATIVE MAINTENANCE LEVEL 2	\$5,555,963	\$5,943,294	\$5,751,872	\$191,423
Project Description: RESURFACING MICRO-MILLING PLANING STRIPING LEVELING AND PATCHING ON SR-38 (US-280) FROM A JOINT 686 FT WEST OF CR-62 TO THE TALLADEGA COUNTY LINE											
ST	2	STPAA 0004(548)	100068636	FM	3.541	01/31/2020	PREVENTATIVE MAINTENANCE LEVEL 2	\$1,971,980	\$2,417,766	\$2,508,028	(\$90,262)
Project Description: RESURFACING PLANING STRIPING LEVELING AND PATCHING ON SR-4 (US-78) FROM A SPOT 86 FEET WEST OF 46TH ALLEY SOUTH TO ST. PATRICK CIRCLE											
HSIP	11	RP-NH-HSIP 0075 (535)	100068643	FM	3.934	12/06/2019	PREVENTATIVE MAINTENANCE LEVEL 2 W/ SAFETY WIDEN	\$3,034,425	\$39,653	\$2,870	\$36,783
Project Description: RESURFACING PLANING STRIPING LEVELING PATCHING AND 2FT SAFETY WIDENING ON SR-75 FROM A JOINT 116FT SOUTH OF FOX HILL DR. TO 240FT SOUTH OF INNSBROOKE PARKWAY											
NH	3	RP-NH-HSIP 0075 (535)	100068643	FM	3.934	12/06/2019	PREVENTATIVE MAINTENANCE LEVEL 2 W/ SAFETY WIDEN	\$2,697,267	\$2,270,447	\$2,133,584	\$136,863
Project Description: RESURFACING PLANING STRIPING LEVELING PATCHING AND 2FT SAFETY WIDENING ON SR-75 FROM A JOINT 116FT SOUTH OF FOX HILL DR. TO 240FT SOUTH OF INNSBROOKE PARKWAY											
RP80	12	RP-NH-HSIP 0075 (535)	100068643	FM	3.934	12/06/2019	PREVENTATIVE MAINTENANCE LEVEL 2 W/ SAFETY WIDEN	\$2,697,267	\$309,057	\$309,057	\$0
Project Description: RESURFACING PLANING STRIPING LEVELING PATCHING AND 2FT SAFETY WIDENING ON SR-75 FROM A JOINT 116FT SOUTH OF FOX HILL DR. TO 240FT SOUTH OF INNSBROOKE PARKWAY											
RP801	12	RP-NH-HSIP 0075 (535)	100068643	FM	3.934	12/06/2019	PREVENTATIVE MAINTENANCE LEVEL 2 W/ SAFETY WIDEN	\$2,697,267	\$1,882	\$1,882	\$0
Project Description: RESURFACING PLANING STRIPING LEVELING PATCHING AND 2FT SAFETY WIDENING ON SR-75 FROM A JOINT 116FT SOUTH OF FOX HILL DR. TO 240FT SOUTH OF INNSBROOKE PARKWAY											
NH	3	NH 0005(557)	100068644	FM	3.983	04/24/2020	PREVENTATIVE MAINTENANCE LEVEL 2	\$2,956,612	\$2,403,248	\$1,273	\$2,401,975
Project Description: RESURFACING PLANING STRIPING LEVELING AND PATCHING ON SR-5 (US-11) FROM 31 FEET NORTH OF ACADEMY DRIVE TO 111 FEET NORTH OF 22ND STREET NORTH											
NH	3	NH 0149(503)	100070159	FM	1.150	02/28/2020	PREVENTATIVE MAINTENANCE LEVEL 2	\$2,076,010	\$1,591,195	\$1,243,991	\$347,204
Project Description: RESURFACING PLANING PATCHING STRIPING AND LEVELING ON SR-149 FROM COLUMBIANA ROAD TO WILDWOOD CIRCLE											
SAF	11	STPAA-HSIP 0003 (620)	100070151	FM	2.325	04/24/2020	PREVENTATIVE MAINTENANCE LEVEL 2 W/ SAFETY WIDEN	\$2,615,498	\$47,510	\$12,370	\$35,140
Project Description: RESURFACING PLANING STRIPING LEVELING PATCHING AND 2FT SAFETY WIDENING ON SR-3(US-31) FROM .2 MILE NORTH OF FINLEY BLVD TO A JOINT AT 52ND AVE NORTH											
ST	2	STPAA-HSIP 0003 (620)	100070151	FM	2.325	04/24/2020	PREVENTATIVE MAINTENANCE LEVEL 2 W/ SAFETY WIDEN	\$2,324,887	\$1,780,979	\$1,361,837	\$419,142
Project Description: RESURFACING PLANING STRIPING LEVELING PATCHING AND 2FT SAFETY WIDENING ON SR-3(US-31) FROM .2 MILE NORTH OF FINLEY BLVD TO A JOINT AT 52ND AVE NORTH											

Annual Listing of Obligated Projects

CMA	13	CMAQ NR20(909)	100069333	SP	0.000	02/01/2020	UNCLASSIFIED	\$242,400	\$242,400	\$0	\$242,400
-----	----	-------------------	-----------	----	-------	------------	--------------	-----------	-----------	-----	-----------

Project Description: PURCHASE OF 5 FULLY EQUIPPED (ASAP) VEHICLES FOR THE BIRMINGHAM AREA

STATE	7	ST-037-000- 017 ()	100070405	SP	0.000	01/01/2020	LIGHTING	\$0	\$0	\$0	\$0
-------	---	------------------------	-----------	----	-------	------------	----------	-----	-----	-----	-----

Project Description: AREA WIDE LIGHTING FOR JEFFERSON AND SHELBY COUNTIES INVENTORY ASSESS MAP AND ANALYSIS OF VARIOUS LIGHTING SYSTEMS IN THE BIRMINGHAM METROPOLITAIN AREA

Sponsor: BIRMINGHAM

Program	Table No.	FA Nbr.	Project Number	Scope	Length (miles)	Start Date	Type of Work	% Engineer Estimate	Fed. Obligated	Fed. Expenditure	Balance
ULBH	1	STPBH 3715(269)	100064225	CN	0.000	01/31/2020	PAVEMENT REHABILITATION	\$959,880	\$967,921	\$698,829	\$269,093

Project Description: PAVEMENT REHABILITATION ON LAKESHORE PARKWAY FROM LEAF LAKE DRIVE TO VENICE ROAD

TABH	5	TAPBH TA16(943)	100065573	CN	0.000	02/15/2020	STREETSCAPE	\$1,100,000	\$689,345	\$0	\$689,345
------	---	--------------------	-----------	----	-------	------------	-------------	-------------	-----------	-----	-----------

Project Description: 7TH AVENUE SOUTH STREETSCAPE AND IMPROVEMENTS PROJECT LOCATED ON 7TH AVENUE SOUTH AND OTHER VARIOUS STREETS IN THE CITY OF BIRMINGHAM.

TBHME	5	TAPBH TA16 (943)	100065573	CN	0.000	02/15/2020	STREETSCAPE	\$1,100,000	\$410,655	\$0	\$410,655
-------	---	------------------------	-----------	----	-------	------------	-------------	-------------	-----------	-----	-----------

Project Description: 7TH AVENUE SOUTH STREETSCAPE AND IMPROVEMENTS PROJECT LOCATED ON 7TH AVENUE SOUTH AND OTHER VARIOUS STREETS IN THE CITY OF BIRMINGHAM.

CMA	13	CMAQ 3718(252)	100068467	PE	0.000	03/01/2020	STREETSCAPE	\$240,000	\$240,000	\$9,693	\$230,307
-----	----	-------------------	-----------	----	-------	------------	-------------	-----------	-----------	---------	-----------

Project Description: GREENWAY AND ROAD DIET ON RICHARD ARRINGTON JR BOULEVARD FROM 15TH AVENUE SOUTH TO VALLEY AVENUE

Sponsor: GARDENDALE

Program	Table No.	FA Nbr.	Project Number	Scope	Length (miles)	Start Date	Type of Work	% Engineer Estimate	Fed. Obligated	Fed. Expenditure	Balance
CMA	13	CMAQ 3717(253)	100050724	CN	0.000	04/15/2020	UNCLASSIFIED	\$543,948	\$543,948	\$381	\$543,567

Project Description: SIDEWALK IMPROVEMENTS AND LIGHTING ALONG MAIN ST FROM MT OLIVE RD TO FIELDSTOWN RD ALONG BELL ST TO THE DEAD END AND A PEDESTRIAN TRAIL WITH 1 PED BRIDGE TRAVERSING ACROSS CITY OWNED PROPERTY

Sponsor: HOMEWOOD

Program	Table No.	FA Nbr.	Project Number	Scope	Length (miles)	Start Date	Type of Work	% Engineer Estimate	Fed. Obligated	Fed. Expenditure	Balance
CMA	13	CMAQ TA15(903)	100065219	RW	0.000	03/01/2020	STREETSCAPE	\$880,000	\$880,000	\$0	\$880,000

Project Description: 18TH STREET REVITALIZATION FROM 28TH AVENUE SOUTH TO A POINT APPROXIMATELY 1000 NORTH OF ROSEDALE DRIVE IN THE CITY OF HOMEWOOD

Annual Listing of Obligated Projects

Sponsor: HOOVER

Program	Table No.	FA Nbr.	Project Number	Scope	Length (miles)	Start Date	Type of Work	% Engineer Estimate	Fed. Obligated	Fed. Expenditure	Balance
TABH	5	TAPBH TA18(932)	100068449	CN	0.000	02/15/2020	SIDEWALK	\$583,022	\$583,022	\$0	\$583,022

Project Description: SIDEWALK LANDSCAPING AND LIGHTING AROUND THE HOOVER PUBLIC LIBRARY CORNER LOT BETWEEN MUNICIPAL LANE MONTGOMERY HIGHWAY AND MUNICIPAL DRIVE

Sponsor: JEFFERSON COUNTY

Program	Table No.	FA Nbr.	Project Number	Scope	Length (miles)	Start Date	Type of Work	% Engineer Estimate	Fed. Obligated	Fed. Expenditure	Balance
CMA	13	CMAQ NR18(918)	100068759	SP	0.000	07/01/2020	UNCLASSIFIED	\$120,000	\$120,000	\$0	\$120,000

Project Description: BICYCLE/PEDESTRIAN PLAN FOR JEFFERSON COUNTY SPONSOR IS JEFFERSON COUNTY

Sponsor: MIDFIELD

Program	Table No.	FA Nbr.	Project Number	Scope	Length (miles)	Start Date	Type of Work	% Engineer Estimate	Fed. Obligated	Fed. Expenditure	Balance
A2RDY	2	ACAA59488 ATRP (006)	100059488	CN	1.500	04/30/2021	DRAINAGE CORRECTION	\$633,183	\$633,183	\$840	\$632,343

Project Description: DRAINAGE IMPROVEMENTS FOR APPROXIMATELY 0.2 MILE ALONG RUTLEDGE DRIVE 0.25 MILES WEST OF WOODWARD ROAD

Sponsor: MOUNTAIN BROOK

Program	Table No.	FA Nbr.	Project Number	Scope	Length (miles)	Start Date	Type of Work	% Engineer Estimate	Fed. Obligated	Fed. Expenditure	Balance
TABH	5	TAPBH TA18(931)	100068450	CN	0.000	12/15/2019	SIDEWALK	\$548,992	\$548,992	\$324,886	\$224,106

Project Description: A SIDEWALK ALONG DUNBARTON DRIVE FROM NORTH WOODRIDGE ROAD TO LOCKSLEY DRIVE

Sponsor: RPCGB

Program	Table No.	FA Nbr.	Project Number	Scope	Length (miles)	Start Date	Type of Work	% Engineer Estimate	Fed. Obligated	Fed. Expenditure	Balance
CMA	13	CMAQ NR19(936)	100070047	SP	0.000	10/01/2020	UNCLASSIFIED	\$520,000	\$520,000	\$0	\$520,000

Project Description: OZONE AWARENESS PROGRAM FOR JEFFERSON AND SHELBY COUNTIES FY 2021

Sponsor: SHELBY COUNTY

Program	Table No.	FA Nbr.	Project Number	Scope	Length (miles)	Start Date	Type of Work	% Engineer Estimate	Fed. Obligated	Fed. Expenditure	Balance
CMA	13	CMAQ 5917(904)	100054519	CN	1.800	09/25/2020	UNCLASSIFIED	\$1,042,247	\$1,868,397	\$2,264	\$1,866,132

Project Description: INVERNESS COMMUNITY GREENWAY FROM INVERNESS FIRE STATION TO HOOVERS NATURE PARK

ULBH	1	STPBH 5914(250)	100056309	RW	0.300	12/01/2019	BRIDGES AND APPROACHES	\$476,960	\$476,960	\$5,127	\$471,833
------	---	--------------------	-----------	----	-------	------------	------------------------	-----------	-----------	---------	-----------

Project Description: BRIDGE REPLACEMENT ON CR-55 OVER NORFOLK SOUTHERN RAILROAD NEAR STERRETT BIN 10357

Annual Listing of Obligated Projects

A2BR	2	ACBR59502 ATRP (009)	100059502	CN	0.000	12/06/2019	BRIDGE REPLACEMENT	\$2,439,674	\$2,101,911	\$4,782	\$2,097,130
------	---	----------------------------	-----------	----	-------	------------	--------------------	-------------	-------------	---------	-------------

Project Description: BRIDGE REPLACEMENT OF CR-52 BIN 3267 OVER BUCK CREEK (AASHTO)

COBR	2	ACBR59502 ATRP (009)	100059502	CN	0.000	12/06/2019	BRIDGE REPLACEMENT	\$2,439,674	\$1,049,786	\$6,030	\$1,043,756
------	---	----------------------------	-----------	----	-------	------------	--------------------	-------------	-------------	---------	-------------

Project Description: BRIDGE REPLACEMENT OF CR-52 BIN 3267 OVER BUCK CREEK (AASHTO)

Sponsor: TBD

Program	Table No.	FA Nbr.	Project Number	Scope	Length (miles)	Start Date	Type of Work	% Engineer Estimate	Fed. Obligated	Fed. Expenditure	Balance
STATO	7	ST-037-999-025-CN ()	100071628	CN	0.000	06/25/2021	RESURFACING	\$0	\$0	\$0	\$0

Project Description: RESURFACING ON 16TH ST N 16TH CT N 13TH ST N 17TH ST N 16TH AVE N 11TH ST N 15TH CT N 12TH ST N 15TH AVE N 14TH AVE N 13TH CT N 12TH CT N 15TH ST N 12TH AVE N 11TH CT N 6TH ST N 4TH PL N 13TH AVE N AND 14TH ST N WITHIN FOUNTAIN HEIG

COBR	2	BR 5914(252)	100070892	UT	0.202	07/01/2020	UTILITY ADJUSTMENT	\$214,452	\$214,452	\$0	\$214,452
------	---	-----------------	-----------	----	-------	------------	--------------------	-----------	-----------	-----	-----------

Project Description: BRIDGE REPLACEMENT (BIN 015617) AND APPROACHES ON CR-24 OVER SPRING CREEK - SCP 59-810-12U

IM	3	IM I459(317)	100068226	PE	5.955	12/01/2019	PREVENTATIVE MAINTENANCE LEVEL 2	\$225,000	\$225,000	\$4,054	\$220,946
----	---	-----------------	-----------	----	-------	------------	----------------------------------	-----------	-----------	---------	-----------

Project Description: CONCRETE PAVEMENT PRESERVATION ON I-459 FROM SR-3 (US-31) TO LORNA ROAD (MP 13.866 TO MP 14.794) AND FROM A JOINT SOUTH OF SHADES CREEK TO THE PAVING JOINT SOUTH OF US-280 (MP 15.892 TO MP 19.821)

SAF	11	STPAA-HSIP 0025 (557)	100070152	FM	3.685	06/26/2020	PREVENTATIVE MAINTENANCE LEVEL 2 W/ SAFETY WIDEN	\$2,017,368	\$74,159	\$4,092	\$70,067
-----	----	-----------------------------	-----------	----	-------	------------	---	-------------	----------	---------	----------

Project Description: RESURFACING PLANING STRIPING LEVELING AND PATCHING AND 2 SAFETY WIDENING ON SR-25 FROM THE BIBB COUNTY LINE TO CR-73 IN MONTEVALLO

ST	2	STPAA-HSIP 0025 (557)	100070152	FM	3.685	06/26/2020	PREVENTATIVE MAINTENANCE LEVEL 2 W/ SAFETY WIDEN	\$1,793,216	\$772,633	\$1,630	\$771,002
----	---	-----------------------------	-----------	----	-------	------------	---	-------------	-----------	---------	-----------

Project Description: RESURFACING PLANING STRIPING LEVELING AND PATCHING AND 2 SAFETY WIDENING ON SR-25 FROM THE BIBB COUNTY LINE TO CR-73 IN MONTEVALLO

ST	2	STPAA 0139(504)	100070153	FM	0.320	06/26/2020	PREVENTATIVE MAINTENANCE LEVEL 2	\$114,820	\$114,820	\$632	\$114,188
----	---	--------------------	-----------	----	-------	------------	----------------------------------	-----------	-----------	-------	-----------

Project Description: RESURFACING PLANING STRIPING LEVELING AND PATCHING ON SR-139 FROM THE BIBB COUNTY LINE TO SR-25 IN WILTON

IM	3	IM I059(419)	100069286	CN	8.145	08/28/2020	PAVEMENT MINOR REHABILITATION	\$16,496,457	\$16,496,457	\$2,608	\$16,493,849
----	---	-----------------	-----------	----	-------	------------	-------------------------------	--------------	--------------	---------	--------------

Project Description: CONCRETE REHABILITATION SHOULDER RECONSTRUCTION BRIDGE RAIL RETROFIT AND RAMP IMPROVEMENTS ON I-59 FROM JUST SOUTH OF CR-10 TO JUST PAST THE ST. CLAIR COUNTY LINE

IM	3	IM I059(421)	100069855	PE	6.635	09/01/2020	PREVENTATIVE MAINTENANCE LEVEL 1	\$225,000	\$225,000	\$20,080	\$204,920
----	---	-----------------	-----------	----	-------	------------	----------------------------------	-----------	-----------	----------	-----------

Project Description: PAVEMENT PRESERVATION ON I-59 FROM THE PAVEMENT JOINT SOUTH OF ALABAMA ADVENTURE PKWY (EXIT 110) TO PAVEMENT JOINT SOUTH OF THE BRIDGES OVER FAIRFIELD BLVD (BINS 12318 AND 12319)

IM	3	IM I065(517)	100069858	PE	6.360	06/01/2020	PREVENTATIVE MAINTENANCE LEVEL 1	\$243,000	\$243,000	\$4,994	\$238,006
----	---	-----------------	-----------	----	-------	------------	----------------------------------	-----------	-----------	---------	-----------

Annual Listing of Obligated Projects

Project Description: NB ROADWAY: FROM JUST NORTH OF 47TH AVE OVERPASS (MP 265.20) TO JUST SOUTH OF MT. OLIVE RD (271.56) SB ROADWAY: FROM JUST SOUTH OF WALKER CHAPEL RD (266.906) TO JUST SOUTH OF MT OLIVE RD (MP 271.26)

IARA	7	IAR-059-000-002 ()	100070506	CN	0.000	07/15/2020	INTERSECTION IMPROVEMENTS	\$0	\$0	\$0	\$0
------	---	---------------------	-----------	----	-------	------------	---------------------------	-----	-----	-----	-----

Project Description: INTERSECTION IMPROVEMENTS AND ROUNDABOUT AT CR-87 AND WEATHER VANE ROAD TO BENEFIT UNITED PARCEL SERVICES

STATE	7	ST-037-003-012-PE ()	100070754	PE	0.216	05/01/2020	TURN LANES	\$0	\$0	\$0	\$0
-------	---	-----------------------	-----------	----	-------	------------	------------	-----	-----	-----	-----

Project Description: EXTENDING EXISTING RIGHT TURN LANE ADDING TURN LANES AND ACCELERATION LANES RELOCATING THE MERCEDES ENTRANCE AND WIDENING THE RIVERCHASE LORNA SHOPPING CENTER DRIVEWAY AT SR-3 (US-31) AND SR-150

STATE	7	ST-058-025-006-PE ()	100070779	PE	0.000	05/01/2020	TURN LANES	\$0	\$0	\$0	\$0
-------	---	-----------------------	-----------	----	-------	------------	------------	-----	-----	-----	-----

Project Description: WIDENING AND ADDING A CENTER LEFT TURN LANE FOR 1300 FT ON SR-25 (US-411) FROM COUNCIL DRIVE TO BURGESS DRIVE

RAA2	12	ATRP2-59-2020-059-PE ()	100070799	PE	0.153	02/01/2020	BRIDGE REPLACEMENT	\$0	\$0	\$0	\$0
------	----	--------------------------	-----------	----	-------	------------	--------------------	-----	-----	-----	-----

Project Description: BRIDGE REPLACEMENT AND APPROACHES (BIN 000519) ON SR-25 OVER WAXAHATCHEE CREEK

RAA2	12	ATRP2-58-2020-462-RW ()	100072217	RW	0.000	08/01/2020	INTERSECTION IMPROVEMENTS	\$0	\$0	\$0	\$0
------	----	--------------------------	-----------	----	-------	------------	---------------------------	-----	-----	-----	-----

Project Description: INTERSECTION IMPROVEMENTS AT SR-7 (US-11) SR-174 AND CR-9: INCLUDING A TRAFFIC SIGNAL AND TURN LANES ON ALL FOUR APPROACHES

STATE	7	ST-058-007-004-PE ()	100070800	PE	0.104	05/01/2020	INTERSECTION IMPROVEMENTS	\$0	\$0	\$0	\$0
-------	---	-----------------------	-----------	----	-------	------------	---------------------------	-----	-----	-----	-----

Project Description: INTERSECTION IMPROVEMENTS AT SR-7 (US-11) SR-174 AND CR-9; INCLUDING A TRAFFIC SIGNAL AND TURN LANES ON ALL FOUR APPROACHES

IM	3	IM-NH I065(510)	100070839	CN	6.698	05/29/2020	PREVENTATIVE MAINTENANCE LEVEL 1	\$6,881,267	\$4,238,798	\$2,533,956	\$1,704,842
----	---	-----------------	-----------	----	-------	------------	----------------------------------	-------------	-------------	-------------	-------------

Project Description: PLANING OVERLAY AND STRIPING ON I-65 FROM THE CR-52 OVERPASS TO THE SOUTH END OF THE CAHABA RIVER BRIDGE

NH	3	IM-NH I065(510)	100070839	CN	6.698	05/29/2020	PREVENTATIVE MAINTENANCE LEVEL 1	\$6,116,682	\$708,774	\$1,589	\$707,185
----	---	-----------------	-----------	----	-------	------------	----------------------------------	-------------	-----------	---------	-----------

Project Description: PLANING OVERLAY AND STRIPING ON I-65 FROM THE CR-52 OVERPASS TO THE SOUTH END OF THE CAHABA RIVER BRIDGE

IM	3	IM I065(510)	100070835	PE	6.698	12/01/2019	PREVENTATIVE MAINTENANCE LEVEL 1	\$272,700	\$99,000	\$94,754	\$4,246
----	---	--------------	-----------	----	-------	------------	----------------------------------	-----------	----------	----------	---------

Project Description: PLANING OVERLAY AND STRIPING ON I-65 FROM THE CR-52 OVERPASS TO THE SOUTH END OF THE CAHABA RIVER BRIDGE

ST	2	STPAA NR20(904)	100071054	SP	0.000	05/01/2020	UNCLASSIFIED	\$1,600,000	\$1,600,000	\$949,273	\$650,726
----	---	-----------------	-----------	----	-------	------------	--------------	-------------	-------------	-----------	-----------

Project Description: REGIONAL TRANSPORTATION MANAGEMENT CENTER AND ASAP PROGRAM FROM FY- 2020-2021.

STATE	7	ST-037-I59-009-PE ()	100071129	PE	0.000	12/15/2019	TRAFFIC STRIPING	\$0	\$0	\$0	\$0
-------	---	-----------------------	-----------	----	-------	------------	------------------	-----	-----	-----	-----

Project Description: GENERATE CONCEPT FOR RESTRIPIING WITH MINOR WIDENING AT I-59 AND I-20 SPLIT

STATE	7	ST-059-119-011-CN ()	100071130	CN	0.000	03/15/2020	TURN LANES	\$0	\$0	\$0	\$0
-------	---	-----------------------	-----------	----	-------	------------	------------	-----	-----	-----	-----

Annual Listing of Obligated Projects

Project Description: VETERANS PARK ENTRANCE RELOCATION TURN LANE ADDITIONS AND SAFETY IMPROVEMENTS APPROXIMATELY 500 FEET SOUTH OF THE EXISTING ENTRANCE ON SR 119 IN ALABASTER ALABAMA

RALG	12	RALG-59-2020-126 ()	100071235	CN	1.320	08/15/2020	RESURFACING	\$0	\$0	\$0	\$0
------	----	-------------------------	-----------	----	-------	------------	-------------	-----	-----	-----	-----

Project Description: RESURFACING ON GEORGE ROY PARKWAY FROM CR-22 TO CR-87

RPTO	9	RPTO TR20()	100071512	TR	0.000	03/01/2020	UNCLASSIFIED	\$48,392	\$78,392	\$51,730	\$26,662
------	---	--------------	-----------	----	-------	------------	--------------	----------	----------	----------	----------

Project Description: SECTION 5311 APPA TRANSIT BIRMINGHAM REG PARATRANSIT CONSORTIUM (CLAS TRAN) OPERATING FY 2020

RPTO	9	RPTO TR20()	100071513	TR	0.000	03/01/2020	UNCLASSIFIED	\$11,210	\$19,200	\$10,526	\$8,674
------	---	--------------	-----------	----	-------	------------	--------------	----------	----------	----------	---------

Project Description: SECTION 5311 APPA TRANSIT BIRMINGHAM REG PARATRANSIT CONSORTIUM (CLAS TRAN) ADMIN FY 2020

STATE	7	ST-037-999-024-CN ()	100071579	CN	0.000	03/15/2020	RESURFACING	\$0	\$0	\$0	\$0
-------	---	--------------------------	-----------	----	-------	------------	-------------	-----	-----	-----	-----

Project Description: RESURFACING ON GREENSPRINGS HIGHWAY (FORMERLY SR 149) FROM WEST LAKESHORE DRIVE/COLUMBIANA ROAD (MP 2.95) TO THE BIRMINGHAM CITY LIMITS (MP 4.54) IN THE CITY OF HOMEWOOD

99007	10	99-703-590-665-001 ()	100071615	MC	0.300	04/15/2020	UNCLASSIFIED	\$0	\$0	\$0	\$0
-------	----	---------------------------	-----------	----	-------	------------	--------------	-----	-----	-----	-----

Project Description: EMERGENCY REPLACEMENT 8 REINFORCED CONCRETE GIRDER ENDS ON I-65 (BIN 6832 AND BIN 6833)

UMTAC	9	UMTAC TR20()	100071757	TR	0.000	06/01/2020	UNCLASSIFIED	\$122,838	\$122,838	\$122,838	\$0
-------	---	---------------	-----------	----	-------	------------	--------------	-----------	-----------	-----------	-----

Project Description: SECTION 5310 TRANSIT (URBAN) THE ARC OF SHELBY COUNTY INC. CAPITAL ROLLING STOCK (4 MINI VANS) FY 2020

99007	10	99-703-370-459-001 ()	100071762	MC	0.000	05/15/2020	UNCLASSIFIED	\$0	\$0	\$0	\$0
-------	----	---------------------------	-----------	----	-------	------------	--------------	-----	-----	-----	-----

Project Description: EMERGENCY REPAIR TO BENT CAP BENT 5 BIN 12306 I-459 JEFFERSON COUNTY

24AC1	2	ER 9070(931)	100072008	CN	0.065	08/15/2020	UNCLASSIFIED	\$422,815	\$422,815	\$326,461	\$96,354
-------	---	--------------	-----------	----	-------	------------	--------------	-----------	-----------	-----------	----------

Project Description: EMERGENCY REPAIRS FOR BACK SLOPE FAILURE ON SR-75 FROM MP 14.382 TO MP 14.447 (FHWA DISASTER AL 2020-01 ALDOT EVENT 042 DDIR 042-03-05-01)

99003	10	99-303-690-000-001 ()	100072069	MP	0.000	09/01/2020	UNCLASSIFIED	\$0	\$0	\$0	\$0
-------	----	---------------------------	-----------	----	-------	------------	--------------	-----	-----	-----	-----

Project Description: MISC. PRELIMINARY ENGINEERING FOR VARIOUS ROUTES IN THE BIRMINGHAM AREA

RPTOC	9	RPTOC TR20()	100072235	TR	0.000	08/01/2020	UNCLASSIFIED	\$212,644	\$212,644	\$212,644	\$0
-------	---	---------------	-----------	----	-------	------------	--------------	-----------	-----------	-----------	-----

Project Description: SECTION 5311 APPA TRANSIT BHAM REG PARATRANSIT CONSORTSIUM (CLASTRAN) CAPITAL SUPPORT EQUIP FY2020

RPTO8	9	PDRPTO8 TR20()	100072236	TR	0.000	08/01/2020	UNCLASSIFIED	\$120,000	\$120,000	\$57,284	\$62,716
-------	---	-----------------	-----------	----	-------	------------	--------------	-----------	-----------	----------	----------

Project Description: SECTION 5311 TRANSIT CARES ACT BHAM REG PARATRANSIT CONSORTIUM (CLAS TRAN) OPERATING FY 2020

RPTO8	9	PDRPTO8 TR20()	100072237	TR	0.000	08/01/2020	UNCLASSIFIED	\$22,500	\$22,500	\$13,497	\$9,003
-------	---	-----------------	-----------	----	-------	------------	--------------	----------	----------	----------	---------

Annual Listing of Obligated Projects

Project Description: SECTION 5311 TRANSIT CARES ACT BHAM REG PARATRANSIT CONSORTIUM (CLAS TRAN) ADMIN FY 2020

99007	10	99-703-370-031-001 ()	100072529	MC	0.000	10/15/2020	UNCLASSIFIED	\$0	\$0	\$0	\$0
-------	----	---------------------------	-----------	----	-------	------------	--------------	-----	-----	-----	-----

Project Description: EMERGENCY REPAIRS TO A PIPE FAILURE ON US-31 AT MP 270.7 IN JEFFERSON COUNTY

Sponsor: VESTAVIA HILLS

Program	Table No.	FA Nbr.	Project Number	Scope	Length (miles)	Start Date	Type of Work	% Engineer Estimate	Fed. Obligated	Fed. Expenditure	Balance
CMA	13	CMAQ 7030(600)	100057172	RW	0.760	01/01/2020	SIDEWALK	\$316,000	\$316,000	\$0	\$316,000

Project Description: SIDEWALKS ALONG CR-42 (MASSEY ROAD) FROM SR-3 (US-31 MONTGOMERY HIGHWAY) TO CR-99 (COLUMBIANA ROAD) IN VESTAVIA HILLS