

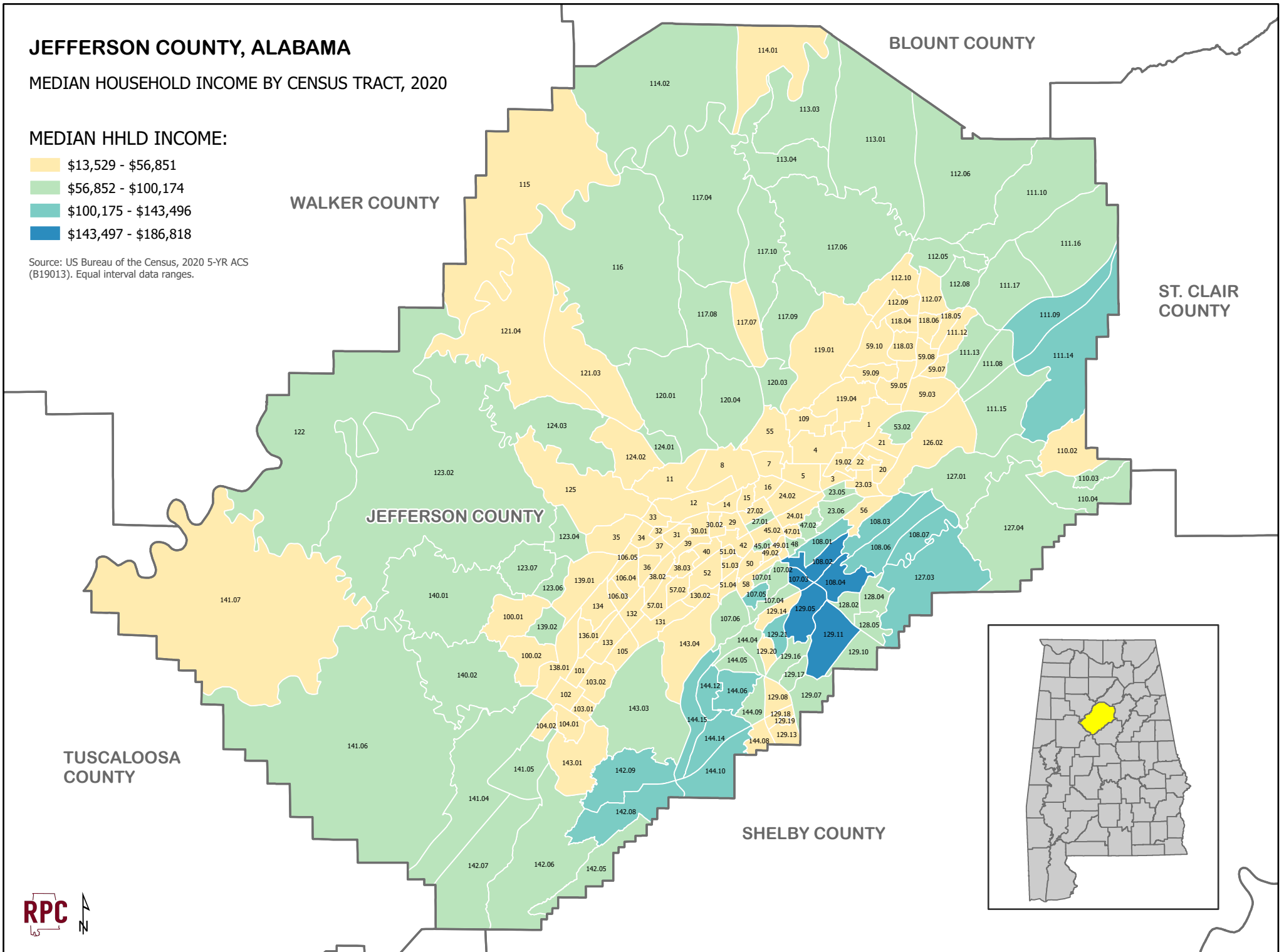
JEFFERSON COUNTY, ALABAMA

MEDIAN HOUSEHOLD INCOME BY CENSUS TRACT, 2020

MEDIAN HHLD INCOME:

- \$13,529 - \$56,851
- \$56,852 - \$100,174
- \$100,175 - \$143,496
- \$143,497 - \$186,818

Source: US Bureau of the Census, 2020 5-YR ACS (B19013). Equal interval data ranges.



WALKER COUNTY

BLOUNT COUNTY

ST. CLAIR COUNTY

JEFFERSON COUNTY

SHELBY COUNTY

TUSCALOOSA COUNTY

