

**UNIFIED PLANNING WORK PROGRAM**  
**for the**  
**Birmingham Metropolitan Planning Organization**

**FY 2012**  
**October 1, 2011 - September 30, 2012**

Prepared By The  
Regional Planning Commission of Greater Birmingham

September 2011





Birmingham Metropolitan Planning Organization

**Unified Planning Work Program (UPWP)**

**Fiscal Year 2012**

This document is posted at  
<http://www.bhammpo.org>

For further information, please contact  
Scott Tillman, Director of Planning and Operations  
Regional Planning Commission of Greater Birmingham (RPCGB)  
1731 1<sup>st</sup> Avenue North, Suite 200  
Birmingham, AL 35203  
Email: [stillman@RPCGB.org](mailto:stillman@RPCGB.org)

Date adopted: September 14, 2011

This document was a cooperative effort of the US Department of Transportation (USDOT), Federal Highway Administration, the Federal Transit Administration, the Alabama Department of Transportation, and prepared by the Regional Planning Commission of Greater Birmingham, as staff to the MPO, in partial fulfillment of Task 3.0 of the FY2011 UPWP and requirements set forth in amended Title 23 USC 134. The contents of this report do not necessarily reflect the official views or policy of the USDOT.

Birmingham Metropolitan Planning Organization  
**Unified Planning Work Program (UPWP)**

**Membership**

**Fiscal Year 2012**

**Metropolitan Planning Organization**

Chair: Mayor Doug Brewer, City of Graysville

Vice Chair: Mayor Thomas Henderson, City of Center Point

Secretary: Mr. Wayne Sullivan, Director, Jefferson County Roads and Transportation

**Transportation Citizens Committee**

Chair: Ms. Ouida Fritschi, South/Southeast Jefferson County

Vice Chair: Vacant

**Transportation Technical Committee**

Chair: Mr. David Hunke, Shelby County Planning Services Supervisor

Vice Chair: Mr. Greg Dawkins, Birmingham Traffic Engineer

**Regional Planning Commission of Greater Birmingham**

*Staff to the MPO*

Mr. Charles Ball, Executive Director

Mr. Scott Tillman, Director of Planning and Operations

Mr. Darrell Howard, Deputy Director of Planning

Ms. Lindsay Gray, Deputy Director of Operations

## TRANSPORTATION CITIZENS COMMITTEE (TCC)

May 2011

**Chair:** Ouida Fritschi, South/Southeast Jefferson County

**Vice Chair:** Vacant

Joanne Adcock, East/Northeast Jefferson County  
Anna Brown, City of Birmingham  
Lawrence Clark, Shelby County  
Nancy Clark, Shelby County  
Peggy Cochran, South/Southeast Jefferson County  
Jackie Dye, Shelby County  
Butch Ferrell, West/Southwest Jefferson County  
Harry Giddens, City of Birmingham  
Joel Gilbert, City of Birmingham  
Judy Gordon, South/Southeast Jefferson County  
Jim Gunnin, East/Northeast Jefferson County  
Pat Hall, East/Northeast Jefferson County  
Jeff Havercroft, Shelby County  
Gilbert Klein, City of Birmingham  
Bruce Ludwig, South/Southeast Jefferson County  
Barbara McKenna, East/Northeast Jefferson County  
Courtney Newton, West/Southwest Jefferson County  
Willie Osborne, City of Birmingham  
Pittman Owen, City of Birmingham  
Johnny Peebles, III, South/Southeast Jefferson County  
T. H. Robertson, East/Northeast Jefferson County  
Ruthie Royster, City of Birmingham  
Calvin Rumph, Shelby County  
David Russell, City of Birmingham  
Nichalaus Sims, West/Southwest Jefferson County  
Robert Smith, City of Birmingham  
John Springer, City of Birmingham  
Steffen Waendelin, South/Southeast Jefferson County  
Phillip Wiedmeyer, South/Southeast Jefferson County

## TRANSPORTATION TECHNICAL COMMITTEE (TTC)

May 2011

**Chair: David Hunke, At-Large**

**Vice-Chair: Greg Dawkins, City of Birmingham Traffic Engineer**

Alfedo Acoff, Environmental Coordinator, ALDOT Design Bureau - Montgomery  
Ken Boozer, Traffic Engineer, Jefferson County Dept. of Roads and Transportation  
Richard Caudle, At-Large  
Sheila Chaffin, Planner, UAB Executive Director Campus Planning  
Fenn Church, Trucking Representative  
Bob Portera, At-Large  
Matthew Cobb, Engineer, City of Homewood  
Scott Cothron, At-Large  
Richard Darden, At-Large  
Al Folcher, At-Large  
Doug Hale, Bicycle/Pedestrian Representative  
Chris Hatcher, Operation New Birmingham  
Fred Hawkins, At-Large  
George Henry, At-Large  
Scott Holladay, At-Large  
Denise Hornbuckle, Traffic Safety Representative  
Jason Howanitz, Air Pollution Control Engineer, Jefferson County Department of Health  
Randy Kemp, At-Large  
Rod Long, Engineer, City of Hoover  
Tom Magee, Planner, City of Birmingham  
Charles Malone, Maintenance Engineer, ALDOT Maintenance Representative, Birmingham  
Wallace McCord, At-Large  
Mary Margaret Nicholson, At-Large  
Emmanuel Oranika, Trans Metro Plan Admin, ALDOT Bureau of Trans Plan & Modal Prog - Montgomery  
Chris Reeves, At-Large  
Martin Edwards-Clark, Planning Manager, BJCTA  
Alicia Rudolph, At-Large  
Andrew Sullivan, At-Large  
John Tally, Assistant Director, ClasTran  
Lance Taylor, Preconstruction Engineer, ALDOT - Birmingham  
Virginia Williams, At-Large  
Eric Womack, Senior Planner, Shelby County Development Services  
Holly Peterson, Community Planner, Federal Transit Administration (Non-Voting Member)  
Nan Baldwin, Vice-President Regional Develop, Birmingham Business Alliance (Non-Voting Member)  
Ron Gore, Chief, ADEM Air Division (Non-Voting Member)  
Dave Harris, Planning Program Manager, Federal Highway Administration (Non-Voting Member)

*(All persons are voting members, except as otherwise noted)*

# METROPOLITAN PLANNING ORGANIZATION (MPO)

May 2011

**Chair:** \*Doug Brewer, Mayor of Graysville, Jefferson County Municipalities  
**Vice Chair:** \*Thomas Henderson, Mayor of Center Point, Jefferson County Municipalities  
**Secretary:** \*Wayne Sullivan, Director, Unincorporated Jefferson County

Valerie Abbott, Councilor, City of Birmingham

Tracey Adams, City of Birmingham

Tommy Alexander, Mayor of Irondale, Jefferson County Municipalities

\*Delor Baumann, Mayor of Hueytown, Jefferson County Municipalities

\*William Bell, Mayor, City of Birmingham

\*Andre Bittas, Director, City of Birmingham

Melanie Bouyer, Mayor of Lipscomb, Jefferson County Municipalities

George Bowman, Commissioner, Unincorporated Jefferson County

Jerry Brasseale, Mayor of Pleasant Grover, Jefferson County Municipalities

\*Sandra Little Brown, Commissioner, Unincorporated Jefferson County

Robert Caliento, Town of Helena, Shelby County

\*Randy Cole, Engineer, Shelby County

\*Brian Davis, 3<sup>rd</sup> Division Engineer, Alabama Department of Transportation

Greg Dawkins, Traffic Engineer, City of Birmingham

Larry Dillard, Commissioner, Shelby County

David Frings, Mayor of Alabaster, Shelby County

Kenneth Gulley, Mayor of Bessemer, Jefferson County Municipalities

\*Ray Hamilton, Manager, Shelby County

Tom Henderson, Sr., Councilor, Unincorporated Jefferson County

Harvey Henley, Unincorporated Jefferson County

\*Walter Jackson, Unincorporated Jefferson County

\*Jesse Jowers, Engineer, City of Pelham, Shelby County

Randall Kemp, Engineer, City of Birmingham

Renee Kemp-Rotan, Assistant, City of Birmingham

Joe Knight, Commissioner, Unincorporated Jefferson County

Rod Long, City of Hoover, Shelby County

Tom Magee, Chief Planner, City of Birmingham

Roger McCondichie, Mayor of Brookside, Jefferson County Municipalities

Gene Melton, Mayor of Trussville, Jefferson County Municipalities

Maxine Herring Parker, Councilor, City of Birmingham

Steve Parsons, Mayor of Sylvan Springs, Jefferson County Municipalities

Othell Phillips, Mayor of Gardendale, Jefferson County Municipalities

\*Kimberly Rafferty, Councilor, City of Birmingham

Gary Richardson, Mayor of Midfield, Jefferson County Municipalities

Jay Roberson, Councilor, City of Birmingham

\*Patrick Sellers, Board Member, BJCTA

Loxcil Tuck, Mayor of Tarrant, Jefferson County Municipalities

Virginia Williams, Executive Administrative Assistant, City of Birmingham

Alberto Zaragoza, Mayor of Vestavia Hills, Jefferson County Municipalities

Mark Bartlett, Division Administrator, Federal Highway Administration (Non-Voting Member)

Robert Jilla, Bureau Chief, Transportation Planning & Modal Programs, ALDOT (Non-Voting Member)

**\*Serves on MPO Subcommittee**

**RESOLUTION 9/14/2011**

**Birmingham Metropolitan Planning Organization (MPO)  
Adopting the FY2012 Unified Planning Work Program  
As prepared by the Regional Planning Commission of Greater Birmingham**

**WHEREAS**, the Birmingham Metropolitan Planning Organization (MPO) is the organization designated by the Governor of the State of Alabama as being responsible, together with the State of Alabama, for implementing the applicable provisions of amended 23 USC 134 and 135 (SAFETEA-LU Sec. 6001, August 2005); 23 CFR 450 and 500; 42 USC 7401 et al.; 40 CFR 51 and 93; and,


**WHEREAS**, the U. S. Department of Transportation requires all urbanized areas, as established by the U. S. Bureau of the Census, doing area-wide urban transportation planning that involves more than one Department of Transportation operating administration, to submit a Unified Planning Work Program as a condition for meeting the provisions of Title 23, U. S. Code, Section 134; and,

**WHEREAS**, consistent with the declaration of these provisions, the Regional Planning Commission of Greater Birmingham, in cooperation with the Alabama Department of Transportation, has prepared a Unified Planning Work Program for Fiscal Year 2012; and,

**WHEREAS**, pursuant to its duties, functions, and responsibilities, the Birmingham Metropolitan Planning Organization, in session this 14th day of September, 2011, did review and evaluate the aforementioned Unified Planning Work Program, summarized on the attached pages; now,

**THEREFORE, BE IT RESOLVED** by the Birmingham Metropolitan Planning Organization (MPO) that the same does hereby adopt said Unified Planning Work Program for FY2012.

ADOPTED, this the 14th day of September, 2011

 Date 9/14/2011  
Mayor Doug Brewer, Chairman  
Birmingham Metropolitan Planning Organization

ATTEST:

  
Date 9/14/11  
Charles Ball, Executive Director  
Regional Planning Commission of Greater Birmingham



## TABLE OF CONTENTS

The Transportation Planning Process .....	1
Task 1.0 Administration .....	3
1.1 MPO Administration .....	3
1.2 Unified Planning Work Program .....	4
1.3 Capital and Operating Purchases .....	5
1.4 Education and Training .....	6
1.5 Continuity of Operations Plan .....	7
Task 2.0 Planning Information .....	9
2.1 Data Collection and Forecasting .....	9
2.2 Socioeconomic Data Collection and Analysis .....	11
2.3 Travel Demand Modeling .....	12
2.4 Geographic Information Systems .....	14
2.5 Transportation Infrastructure and Operations .....	15
Task 3.0 Public Involvement .....	17
Task 4.0 Environmental Process Planning .....	19
4.1 Air Quality Planning .....	19
4.2 Environmental Consultation Process .....	21
4.3 Advance Planning, Programming and Logical Engineering (APPLE) .....	22
4.4 Climate Change .....	24
Task 5.0 Transportation Systems .....	25
5.1 Regional Transportation Plan .....	25
5.1.1 Air Quality Conformity Report Preparation .....	27
5.1.2 Amend Regional Plan Project Listings for Air Quality Conforming .....	29
5.2 Transportation Improvement Program (TIP) .....	30
5.2.1 Amended TIP Project Listings for Air Quality Conformity .....	31
5.3 Thoroughfare Planning .....	32
5.4 Public Transportation Planning .....	33
5.5 Active Transportation Planning .....	35
5.6 Logistics Systems Planning .....	37
5.7 Congestion Management Process .....	39
5.8 Transportation Safety Planning .....	41
Task 6.0 Program Planning .....	43
6.1 CommuteSmart (Rideshare) .....	43
6.2 Human Services Coordinated Transportation Planning .....	44
6.3 Building Communities Program .....	45

Task 7.0	Corridor Management Planning and Special Projects .....	47
7.1	U.S. 280 Corridor Alternatives Analysis .....	47
7.2	I-65/U.S. 31 Corridor Alternatives Analysis .....	48
7.3	U.S. 11 Southwest Corridor Alternative Analysis .....	49
7.4	U.S. 11 East /U.S. 78 East Corridor Alternatives Analysis .....	51
7.5	U.S. 78 West Corridor Plan .....	53

APPENDICES

List of Acronyms.....	A-1
Table 1: FY 2012 Organizational Responsibility, Federal \$ .....	A-2
Table 2: FY 2012 Funding Sources .....	A-4
MPO Organization Chart .....	A-5
Metropolitan Planning Area/Transportation Management Area Map .....	A-6

# **THE TRANSPORTATION PLANNING PROCESS**

## **For the Birmingham Metropolitan Planning Area**

### **Overview**

As a condition to the receipt of federal highway and transit capital or operating assistance, each metropolitan planning area (MPA) is required to have a transportation planning process. This process includes the development of a long-range transportation plan, a short-range transportation improvement program, a plan to promote attainment of air quality standards, a human services coordinated transportation plan, and a planning work program, which includes planning and project development activities to address other transportation issues.

Certification of the transportation planning process is conducted every four years by the Federal Highway Administration (FHWA) and the Federal Transit Administration (FTA) under the requirements of the Safe, Accountable, Flexible, and Efficient Transportation Equity Act: A Legacy for Users (SAFETEA-LU) and is necessary to receive surface transportation program, air quality, national highway system, interstate maintenance, state bridge replacement, and transit capital and operating funds. A decertified process would result in the loss of approximately \$50,000,000 per year. The Birmingham Metropolitan Planning Organization (MPO) membership is geographically representative of the metropolitan planning area, the entire boundaries of Jefferson and Shelby Counties, based upon the final decennial Census and is responsible for the development of the required products

The Regional Planning Commission of Greater Birmingham (RPCGB) is the designated recipient of U.S. Department of Transportation (USDOT) planning funds used to assist the MPO in the performance of its responsibilities. These funds are designated by the State in agreement with local governments. The MPO's multi-jurisdictional responsibility is provided by the RPCGB. Two additional committees provide information and recommendations to the MPO—the Transportation Citizens Committee and Transportation Technical Committee.

Work tasks described in this report are conducted on a continual basis. An agreement among the Alabama Department of Environmental Management (ADEM), Alabama Department of Transportation (ALDOT), Birmingham-Jefferson County Transit Authority (BJCTA), RPCGB, Jefferson County Department of Health (JCDH), and the MPO outlines the responsibility of each organization in the transportation planning process.

### **Purpose**

The Unified Planning Work Program (UPWP) is the document that guides the MPO in fulfilling its planning responsibilities for the upcoming year. The primary objective of the UPWP is the development of an integrated planning program that considers the planning activities of each modal group and coordinates these activities to produce a total transportation plan serving all segments of the population. The UPWP presents the budget and work tasks necessary to accomplish and maintain the transportation planning process within the Birmingham metropolitan planning area for FY 2012.

### **Status**

The planning tasks for FY 2012 reflect the eight planning factors under the Safe, Accountable, Flexible, Efficient, Transportation Equity Act: a Legacy for Users (SAFETEA-LU) regulations under Federal Highway Administration 23 CFR 450.316 adopted February 14, 2007 which requires the metropolitan planning process to be continuous, cooperative, comprehensive, and provide for consideration and implementation of projects, strategies, and services that will address the following factors:

1. Support the economic vitality of the metropolitan area, especially by enabling global competitiveness, productivity and efficiency;
2. Increase the safety of the transportation system for motorized and non-motorized users;
3. Increase the security of the transportation system for motorized and non-motorized users;
4. Increase accessibility and mobility of people and freight;
5. Protect and enhance the environment, promote energy conservation, improve quality of life and promote consistency between transportation improvements and State and local planned growth and economic development patterns;
6. Enhance the integration and connectivity of the transportation system, across and between modes for people and freight;
7. Promote efficient system management and operation; and
8. Emphasize the preservation of the existing transportation system.

The committee process is the basis for conducting UPWP tasks. Meetings of the Transportation Citizens Committee, Transportation Technical Committee, MPO Subcommittee, and the MPO are held monthly. In addition to the three transportation committees, subcommittees and joint committees are regularly used for the development of the Transportation Improvement Program (TIP), Regional Transportation Plan (RTP), congestion management activities, and major transit projects.

Most traditional tasks are funded with planning funds (PL). Specialized tasks related to ridesharing, air quality, and local land use/transportation utilizes supplemental funds from the Congestion Mitigation Air Quality Program (CMAQ) and Surface Transportation Program (STP). Large-scale transit planning projects are funded through the FTA and congressional earmark.

### **Vision**

Following is the vision statement for the Birmingham metropolitan area:

*Transportation has become the connective tissue of the region. By foot, by bike, by car, or by public transportation, residents experience reduced congestion and higher mobility, both of which are the result of four important decisions:*

1. *Preserving and improving the existing local and interstate highways;*
2. *Developing a responsive, efficient, and highly effective public transportation system;*
3. *Supporting the use of alternative transportation modes; and*
4. *Encouraging sustainable development patterns.*

The UPWP, as outlined in this document, contains work tasks necessary for the RPCGB, BJCTA, and the ALDOT to conduct transportation planning activities for the Birmingham Metropolitan Planning Area (MPA). The Birmingham Metropolitan Planning Organization (MPO) is a Transportation Management Area (TMA) according to 49 USC 5305.

## TASK 1.0: ADMINISTRATION

### 1.1 MPO Administration

#### Objectives

To provide transportation committees, agencies, governments, and the general public with transportation-related information, education, and training, to support emergency transportation operations, and to promote federal, state, and local transportation initiatives.

#### Previous Work

- Prepared for and attended monthly committee meetings; participated in meetings with various local, regional, and state organizations.
- Adopted the FY 2012-2015 Transportation Improvement Program (TIP), Rebalanced/Updated FY 2008-2011 TIP and Air Quality Conformity Determination Report.
- Adopted the Air Quality Conformity Determination Report for 24-hr PM2.5 Standard.
- Submitted a TIGER II grant to the USDOT.
- MPO also reviewed annual reports for the Alabama Partners for Clean Air (APCA) and the CommuteSmart/Rideshare Program.

#### Proposed Work

- MPO meetings, including monthly transportation citizens, technical, MPO Subcommittee, and MPO meetings, and periodic TIP Subcommittee meetings.
- Attend RPCGB Board Meetings and attend RPCGB Annual Meeting.
- Prepare and submit monthly invoices to ALDOT and review the RPCGB monthly financial statement.
- Provide information to the RPCGB auditors and review the draft and final audit report.
- Review agreements for consistency with bylaws.
- Provide information and assistance to individuals, businesses, organizations, and committee
- Participate in cooperative efforts with agencies and organizations. Some activities for FY 2012 include meetings and committee participation with various local, regional, and state organizations.

#### Products

- Committee agendas, notices, resolutions, and minutes
- Invoices to ALDOT
- Staff services necessary to ensure certification of the transportation planning process

#### Staffing

Regional Planning Commission of Greater Birmingham

#### Timeline for Proposed Work

None

#### Financial Responsibility

Total	\$234,091
PL (FHWA)	\$187,273
Local	\$ 46,818

## 1.2 Unified Planning Work Program

### Objectives

To produce a document that outlines work and identifies the planning priorities and activities to be carried out within the Birmingham MPA.

### Previous Work

- A UPWP, which identifies tasks and funding sources, was adopted by the Transportation Citizens Committee, Transportation Technical Committee, MPO Subcommittee, and MPO.
- Two Semi-Annual reports were produced for ALDOT review.

### Proposed Work

- **Task Development**

The UPWP activities are identified by using the planning emphasis areas for expenditure of planning (PL) funds and tasks programmed in the TIP. Priorities for funding are determined from the SAFETEA-LU Planning Goals, the interests of the transportation committees, and the RPCGB Strategic Plan.

- **Semi-Annual Reports**

Two semi-annual reports will be drafted, April 2012 and October 2012, noting the status of tasks and the Disadvantaged Business Enterprise (DBE) participation. Staff will complete the reports and submit to ALDOT for review.

### Products

- UPWP for FY 2013
- Semi-annual reports, with DBE participation

### Staffing

Regional Planning Commission of Greater Birmingham

### Timeline for Proposed Work

- FY 2013 UPWP - June 2012
- FY 2012 Semi-annual reports, with DBE participation - April and October 2012

### Financial Responsibility

Total	\$12,500
PL (FHWA)	\$10,000
Local	\$ 2,500

### 1.3 Capital and Operating Purchases

#### Objective

To maintain, upgrade, and purchase software and hardware for the purpose of gathering information, simplifying tasks, and articulating data to support transportation planning functions.

#### Previous Work

Purchased and installed the Cube Avenue and Cube Sugar Network Editor.

#### Proposed Work

Software purchases, including license/maintenance fees and upgrades, are regularly made for geographic information systems, surveys, databases and spreadsheets, graphics, and operating systems. Capital purchases to include servers, personal computers and peripherals, and hardware/software for field data collection.

As outlined in the “Agreement for Administering U.S. Department of Transportation Financial Assistance for Financial Assistance for Transportation Planning between the State of Alabama and the Regional Planning Commission of Greater Birmingham, “ Article 21 states, in part, “All nonexpendable purchases over \$1,500 must be approved by the State, in advance, in writing, to be eligible for reimbursement.” Further, ALDOT requires anticipated purchases in excess of \$5,000 to have a line item entry in the UPWP.

The following capital and operating equipment is programmed:

• Citilab – Cube Cargo (Task 2.1)	\$14,500
• Purchase dedicated transportation server for planning department	\$11,625
• Purchase computers for staff (4)	\$9,000
• Upgrade software and data capacity of the COOP system (Task 1.5)	\$4,975
• Upgrade Adobe CS (4) and add additional licenses for report	\$6,400
• Upgrade Adobe CS 5.5	\$1,500
• Purchase demographic information from Claritas (Task 2.2)	\$4,700
• Purchase demographic information from InfoUSA (Task 2.2)	\$7,000
• Purchase Sketch-up Pro visualization software from Google (Task 6.3)	\$1,980
• Purchase CityEngine visualization software licenses from Google (Task 6.3)	\$2,170
• GIS maintenance with ESRI (Task 2.4)	\$17,400

#### Products

- Software and upgrades
- Hardware and servers
- License and maintenance fees

#### Staffing

Regional Planning Commission of Greater Birmingham

#### Timeline for Proposed Work

None

#### Financial Responsibility

Total	\$81,250
PL (FHWA)	\$65,000
Local	\$16,250

## 1.4 Education and Training

### Objective

To develop and maintain technical proficiency of staff in order to enable proper guidance and development of the planning process.

### Previous Work

Staff members attended, made presentations at, hosted, and assisted with organization of workshops, conferences, and trainings. Subscribed to and read relevant professional publications.

### Proposed Work

Attend, make presentations, host, and/or assist with organization of workshops, conferences, and trainings. Subscribe to and read relevant professional publications.

### Products

- Knowledgeable staff
- Travel vouchers
- Workshops, conferences, and trainings

### Staffing

Regional Planning Commission of Greater Birmingham

### Timeline for Proposed Work

None

### Financial Responsibility

Total	<u>\$12,500</u>
PL (FHWA)	\$10,000
Local	\$ 2,500



## 1.5 Continuity of Operations Plan (COOP)

### Objective

To maintain and update the COOP for the Birmingham MPA, which will allow for rapid recovery from a disaster to resume the transportation planning process.

### Previous Work

Review responsibilities and procedures of COOP.

### Proposed Work

- Implement COOP activities, including procedures, activation, alternate operations, reconstitution and termination, and information technology.
- Upgrade software and data capacity of the COOP system.

### Products

- COOP implementation activities
- COOP training and exercises
- Upgrade software and data capacity of the COOP system

### Staffing

Regional Planning Commission of Greater Birmingham

### Timeline for Proposed Work

None

### Financial Responsibility

Total	\$ 6,250
PL (FHWA)	\$ 5,000
Local	\$ 1,250

This page left intentionally blank

## TASK 2.0: PLANNING INFORMATION

### 2.1 Data Collection and Forecasting

#### **Objectives**

To conduct data collection and forecasting activities that support local and regional transportation planning.

#### **Previous Work**

Continue to collect basic data such as land use and land development characteristics, school populations, site specific employment, and localized environmental conditions for use within the overall local and regional planning environment.

Development of a new website includes a transportation data/resource center, functional classification roadways, plan projects, and web-based maps. The transportation data/resource center also will continue to collect site transportation impact studies for new and/or expanded development, for specific corridors and/or study areas, and selective intersection turning movement counts on major roadways. In addition, an inventory of traffic control devices, signal timing plans, Synchro roadway networks, and pavement conditions will be collected from external sources.

Ongoing work includes hardware and software updates, data collection and mapping, including but not limited to, traffic counts, bicycle and trail facilities, freight and rail lines, land use, and census data.

#### **Proposed Work**

The RPCGB is responsible for developing and maintaining a regional transportation demand model for the Birmingham MPA, which is a primary screening tool used to identify deficiencies in the future transportation system. The RPCGB has converted its existing Cube TranPlan travel demand model to Citilabs Cube Voyager. The Cube Voyager modeling software will be used for travel demand modeling and all other applicable processes, up to and including air quality conformity analysis in support of budget-based estimate preparation using the MOVES2010a software. This protocol will be used in all future regional and project-specific conformity analyses, to include annual updates and amendments of the 2035 Regional Transportation Plan and existing TIP required through development of the annual Air Quality Conformity Report, and draft and final 2040 Regional Transportation Plan documentation. Cube Cargo, an add-in to Cube Voyager, will be purchased for use in the modeling of freight and goods movements.

#### **Products**

- Transportation Data Center
- Periodic and Area Specific Existing and Future Conditions Reports

#### **Staffing**

Regional Planning Commission of Greater Birmingham, direct contract labor and/or third-party contractors for activities, and organizations identified under Proposed Work.

**Timeline for Proposed Work**

- Transportation Data Center – Summer 2012
- Periodic and Area Specific Existing and Future Conditions Reports – Summer 2012

**Financial Responsibility**

Total	<u>\$7,750</u>
PL (FHWA)	\$6,200
Local	\$1,550

## 2.2 Socioeconomic Data Collection and Analysis

### Objectives

To collect and maintain socioeconomic data that is used for the transportation demand model and other planning activities.

### Previous Work

The RPCGB purchases annual updates of demographic and socioeconomic data from Nielsen-Claritas. Employment by place of work data was purchased from InfoUSA for 2010, to be consistent with the decennial census. Staff participated in Census-related programs and workshops. Traffic Analysis Zone (TAZ) boundaries are being redrawn to Census standards. Construction trends were monitored using the Housing Starts program estimates.

### Proposed Work

Demographic information concerning existing and projected year demographics for income, population, households and other variables will be purchased from groups such as Claritas, InfoUSA, Geolytics, Woods and Poole Economics and other supplemental data sources. The types of reports include demographic, comparison, and socioeconomic profiles. Staff is also participating in the traffic zone definition for the next release of products delineating results from the 2010 Census.

### Products

- Demographic, socioeconomic, and environmental data files
- Maps
- Socio-economic and Economic profile reports (geographic and industry sector specific)

### Staffing

Regional Planning Commission of Greater Birmingham

### Timeline for Proposed Work

None

### Financial Responsibility

Total	<u>\$11,250</u>
PL (FHWA)	\$ 9,000
Local	\$ 2,250

## 2.3 Travel Demand Modeling

### Objectives

To develop and maintain traffic models for the transportation planning process.

### Previous Work

Cube Voyager software was purchased and is in use as the primary development software for MPA network travel demand modeling and in support of air quality conformity estimate preparation using the MOVES2010a software. Analysis using both software packages has been specific to precursors for ground-level ozone (O<sub>3</sub>) and particulate matter (PM<sub>2.5</sub>) within the Birmingham MPA.

### Proposed Work

Continue the development and maintenance of the regional travel demand model for the Birmingham metropolitan planning area. This will include additional refinements to the Cube Voyager and Cube Avenue modeling system to further develop its capabilities to perform macroscopic and mesoscopic (subarea) forecasting of future traffic conditions. Refinements will also include development of capabilities to evaluate freight movement as well as strategies for forecasting transportation infrastructure needs for goods movements. Microsimulation modeling capabilities also will continue to be developed. Specifically the use of Synchro, ASIDRA, Traffix, and AutoTurn will be used to assist with corridor and small area specific transportation planning to assess intersection roadway capacity, turning movements, bicycle and pedestrian planning, and vehicle tracking.

INDEX Plan Builder software is used to establish baseline performance measures and to compare changes in land use conditions and associated demographic and socioeconomic variables. Demographic and socioeconomic data continues to be collected and attributed within INDEX for modeling and scenario development purposes. Additional data requirements for INDEX will be collected, attributed and loaded into the software for other UPWP tasks.

The transportation portion of early progress data activities includes the development of updated fleet age distributions, speeds, and vehicle miles traveled (VMT) from the travel demand model. Emissions factors will be developed in accordance with MOVES2010a to meet the requirements set forth in 40 CFR 51 and 93.

Maintenance for Cube Avenue.

### Products

- Transportation models
- Air quality models
- Area/System Performance Indicators

### Staffing

Regional Planning Commission of Greater Birmingham

### Timeline for Proposed Work

None

**Financial Responsibility**

Total	<u>\$16,000</u>
PL (FHWA)	\$12,800
Local	\$ 3,200

## 2.4 Geographic Information Systems

### Objectives

To provide detailed information to local, state, and federal agencies, as well as the public, regarding transportation facilities, transportation systems, operational and asset condition data, and supporting land uses.

### Previous Work

Revised study area base maps and develop interactive tools for the RPCGB website. Developed new population and employment forecasts. Mapped bicycle and trail facilities, freight facilities, rail lines, and logistics hubs. SDE transportation model has been designed and implemented.

### Proposed Work

The MPO is expanding its GIS to provide more detailed information related to transportation facilities, transportation systems, operational and asset condition data, as well as information about the supporting land uses.

A component of the GIS expansion will include the development of a brownfield database. In order to develop this database, an inventory of brownfield and greyfield sites along major transportation corridors that can be accessed during corridor planning projects for the purpose of evaluating strategies to reduce congestion and energy consumption through land use modifications must be conducted.

### Products

- Maps, data analysis, and models
- Implementation of the INDEX model
- Demographic profiles and reports
- Census 2010 Program activities
- The design and implementation of a transportation data model including, but not limited to, traffic counts, functionally classified roadways, transportation projects, roadway inventory, travel demand, congestion management, and air quality.
- Brownfield Database
- The expansion of the GIS system to include online interactive mapping capabilities.
- Local government planning assistance
- ESRI for maintenance of GIS programs

### Staffing

Regional Planning Commission of Greater Birmingham

### Timeline for Proposed Work

The design and implementation of a transportation data model – December 2011

### Financial Responsibility

Total	<u>\$25,000</u>
PL (FHWA)	\$20,000
Local	\$ 5,000



## 2.5 Transportation Infrastructure and Operations

### Objectives

To collect data for analysis and provide detailed information regarding the transportation system and its operations.

### Previous Work

Collected basic transportation data, such as traffic counts and travel times, inventory of traffic control devices, signal timing plans, and incident response.

### Proposed Work

Continue to collect basic transportation data such as traffic counts and travel times, inventory of traffic control devices, signal timing plans, and incident response, some of which will be collected from third-party and/or private sources such as traffic count firms and communications companies. Staff will also collect and/or assemble data about roadway pavement conditions and bridge decking and structural conditions of each functionally classified roadway within the Birmingham MPA and develop prioritized listings.

### Products

- Functional classification
- Travel demand
- Traffic Counts
- Roadway condition inventory and prioritization for maintenance
- Bridge condition inventory and prioritization for maintenance

### Staffing

Regional Planning Commission of Greater Birmingham

### Timeline for Proposed Work

- Roadway condition inventory and prioritization for maintenance – Spring 2012
- Bridge condition inventory and prioritization for maintenance – Spring 2012

### Financial Responsibility

Total	\$56,250
PL (FHWA)	\$45,000
Local	\$11,250

This page left intentionally blank

## TASK 3.0: PUBLIC INVOLVEMENT

### **Objectives**

To maintain a process for providing citizens, affected public agencies, representatives of public transportation employees, freight shippers, providers of freight transportation services, private providers of transportation, representatives of users of public transportation, representatives of users of pedestrian walkways and bicycle transportation facilities, representatives of the disabled and other interested parties, and any other interested parties with sufficient opportunities to be involved in the transportation planning process.

### **Previous Work**

The MPO website was incorporated into the redesign of the RPCGB website with links to specific projects. The Public Participation Plan continues to be implemented, including an updated, reprinted Transportation Public Contact List. Visualization and interactive exercises are used extensively with outreach activities for at least three projects.

The MPO facilitated, participated, and/or hosted several training opportunities, including the RPCGB Annual Conference, the Building Communities conference, CommuteSmart workshop, APCA workshop, and several opportunities for education regarding bicycles and pedestrians, including bicycle sharing.

The Latino community outreach included educational seminars and information translated in their local newspaper inviting them to participate in the committee process. The Title VI, Americans with Disabilities Act, and DBE policy was updated and posted on the MPO website. Regular reports were submitted to the ALDOT.

### **Proposed Work**

#### **A. Public Participation Activities**

1. MPO Website with links provided to project specific websites.
2. MPO Database.
3. Meetings and meeting announcements, including monthly committee meetings, public involvement meetings, project meetings, and community outreach, as needed.
4. Newsletters published monthly by the RPCGB and project specific newsletters.
5. Direct Mailings, e-mail announcements, press releases, flyers, notices, and fact sheets.
6. Workshops, Open Houses, trainings, visualization techniques, and speaker's bureau.  
Cost for 2 as yet to be determined additional workshops: \$20,000
7. Set up and facilitate the annual Building Communities Conference. Determine an appropriate thematic focus. Work with local partners to coordinate and co-host additional workshops.  
Cost for workshop: \$10,000
8. Comment forms and surveys.

#### **B. Title VI, Americans with Disabilities Act, and DBE**

1. Documentation of minority representation.
2. Documentation of third-party DBE activities conducted for FHWA and FTA funded projects.

**Products**

- Documentation of RTP and TIP public participation activities
- Project specific public involvement outreach activities and collateral materials
- Project specific public involvement documentation and reporting
- Title VI Report (provided with UPWP semi-annual report)
- DBE Report
- Transportation planning/project specific webpages
- MPO member training and education events/courses

**Staffing**

Regional Planning Commission of Greater Birmingham

**Timeline for Proposed Work**

- Title VI Report – April and November 2012
- DBE Report – November 2011

**Financial Responsibility**

Total	\$125,000
PL (FHWA)	\$ 80,000
STPBH	\$ 20,000
Local	\$ 25,000

## TASK 4.0: ENVIRONMENTAL PROCESS PLANNING

### 4.1 Air Quality Planning

#### Objectives

To achieve and maintain compliance with national air quality standards in the Birmingham nonattainment area of Jefferson and Shelby Counties, to protect and improve public health, to minimize the economic impacts on existing businesses, and to support economic growth consistent with clean air goals.

#### Previous Work

Twelve outreach events were conducted for dissemination and input regarding air quality conformity. CommuteSmart and Alabama Partners for Clean Air (APCA) have consolidated many outreach efforts, particularly in the business community. APCA continues to promote idle-free zones in school pick-up lines. A report documenting the program and funding activities of APCA for the period October 1, 2009 – September 30, 2010 was completed.

#### Proposed Work

The following activities will be conducted by the APCA, with assistance provided by the RPCGB:

- **Public Outreach and Marketing** educates the general public about air quality issues and the consequences that individual choices have on air quality.
- **Employer and Employee Outreach** gets major employers involved in air quality issues and encourages employees to travel to work by modes other than single-occupant vehicles.
- **Science and Environmental Education** teaches children about air pollution, its health impacts, and how it can be prevented.
- **Clean Cities and Alternative Fuels** program is to reduce emissions from fleet vehicles through the use of hybrid technology and alternative fuels. The Alabama Clean Fuels Coalition is lead partner.
- **Voluntary Emissions Testing and Vehicle Repair** provides a free emissions check for vehicle owners and encourages owners of high emitters to have their vehicles serviced.
- **Program Administration** includes managing all air quality contracts, processing invoices, monitoring performance and execution of contracts, and providing support to the APCA.

#### Products

Annual Report documenting contract performance of organizations, including emissions reductions for the previous fiscal year

#### Staffing

Regional Planning Commission of Greater Birmingham, direct contract labor and/or third-party contractors for activities, and organizations identified under Proposed Work.

#### Timeline for Proposed Work

Annual Report – March 2012

**Financial Responsibility**

Total	<u>\$1,500,000</u>
CMAQ (FHWA)	\$1,500,000
Local	\$ 0

## 4.2 Environmental Consultation Process

### Objectives

- To link the transportation planning and environmental assessment processes early in the project development phase.
- To inform the project development and NEPA processes with the results of the environmental consultation process.
- To establish inter-agency, cross-disciplinary communication and education.
- To identify and pursue collaborative, cross-disciplinary environmental mitigation strategies.

### Previous Work

- “Red Flag” environmental maps
- “Red Flag” analysis of Birmingham 2035 RTP Roadway Capacity Projects
- Solicitation of Federal and State resource agency comments on Birmingham 2035 RTP

### Proposed Work

- **Environmental Mapping** - continuous updates and refinements to the environmental “red flag” maps.
- **Project Development Consultation** - early coordination of planning and project development considerations, to include identification of “red flags” that could potentially affect a project’s feasibility.
- **Environmental Consultation Roundtable and Outreach Activities** - periodic meetings hosted with Federal and State resource agencies intended to solicit ideas within a collaborative environment about pooling limited mitigation resources in order to accomplish implementation of “meaningful mitigation” solutions that will result in greater net environmental benefits.

Outreach activities to State and municipal governments, transportation planning agencies/departments, land owners/developers, environmental interest groups, and non-traditional planning partners meant to provide educational opportunities and training about evaluation methodologies and advanced mitigation strategies.

### Products

- Environmental Maps
- Project Specific Corridor Feasibility Reports
- Environmental Consultation Roundtable Events and Topic Specific Outreach Activities

### Staffing

Regional Planning Commission of Greater Birmingham, direct contract labor and/or third-party contractors for activities, and organizations identified under Proposed Work.

### Timeline for Proposed Work

Environmental Maps – Spring 2012

### Financial Responsibility

Total	<u>\$112,500</u>
PL (FHWA)	\$ 15,000
STPBH	\$ 75,000
Local	\$ 22,500

### **4.3 Advanced Planning, Programming and Logical Engineering (APPLE)**

#### **Objective**

To improve the quality and timelines of the overall project development process by:

- Assisting local governments determine project feasibility specific to both non-motorized and multimodal travel corridors in advance of entering an expensive and extended project development process
- Assisting project sponsors better articulate project scope, and understand both the planning considerations and potential costs
- Assisting the project development process by educating local governments about the ALDOT project development process
- Providing information to the Birmingham MPO in order to better manage uncertainties in program funding

#### **Previous Work**

- American Recovery and Reinvestment Act project readiness development
- Building Communities (formerly Livable Communities) Corridor Plans

#### **Proposed Work**

The Regional Planning Commission of Greater Birmingham will assist local governments and small project sponsors to assess a project's feasibility. The feasibility assessment will better inform the local governments and small project sponsors' decision making process, and aid them in determining their level of commitment for advancing the project. The goals of the APPLE program will be accomplished in several ways, including:

- Funding the development of APPLE reports
- Managing the feasibility assessment process for small municipalities/local governments
- Directly conduct/develop APPLE reports for small municipalities/local governments
- Educating project sponsors and contractors about the ALDOT project development process, to include education of the NEPA process

Note:

- 1) The Alabama Department of Transportation – Environmental Technical Services (ALDOT ETS) shall remain the sole arbiter of environmental issues on state and federal projects in Alabama, and must be consulted in all instances. ALDOT may seek consultation the Federal Highway Administration (FHWA) on certain matters and will see federal approval on a project only when all issues have been addressed.
- 2) With the exception of certain duties and responsibilities extended to the Birmingham MPO in writing and specific to a particular project and/or a consultant representing an MPO for a specific project, all other actions are the province of ALDOT ETS.
- 3) Early or initial environmental coordination relating to a specific project with state and federal resource agencies shall only be carried out by the ALDOT ETS.

#### **Products**

- Project Specific Advanced Planning Reports
- Project Specific Owner's Manuals and Agreement/Decision History Summaries
- Project status Reports and/or Matrices
- Project Development Educational Workshops and Seminars



**Staffing**

Regional Planning Commission of Greater Birmingham, ALDOT, direct contract labor, and/or 3<sup>rd</sup> party contractors for activities, and organizations identified under Proposed Work.

**Timeline for Proposed Work**

None

**Financial Responsibility**

Total	\$ 131,250
STPBH (FHWA)	\$ 105,000
Local	\$ 26,250

## 4.4 Climate Change

### Objectives

To provide guidance about regional strategies to address climate change through air quality and congestion mitigation, as well as energy efficiency in order to reduce the Birmingham MPA's carbon footprint.

### Previous Work

A report titled "Climate Change Considerations and On-Road Greenhouse Gas Emissions in the Birmingham Metropolitan Planning Area" was completed in FY 2011.

### Proposed Work

The following describes how the MPO will assess existing greenhouse gas (GHG) and determine a methodology for incorporation into its planning process:

- **Develop a Climate Action Plan** - develop a set of recommendations to inform the actions of State and local governments, public and private agencies, specific industries, and transportation planning in order that actions might be taken to accomplish target reductions in GHG emissions.
- **Monitor Progress and Report Results** - monitor GHG emissions and the region's overall carbon footprint in context with federal air quality conformity monitoring activities.

### Products

Climate Action Plan

### Staffing

Regional Planning Commission of Greater Birmingham, direct contract labor and/or third-party contractors for activities, and organizations identified under Proposed Work.

### Timeline for Proposed Work

Climate Action Plan – September 2012

### Financial Responsibility

Total	\$6,250
PL (FHWA)	\$5,000
Local	\$1,250

## TASK 5.0: TRANSPORTATION SYSTEMS

### 5.1 Regional Transportation Plan

#### Objectives

To ensure that the MPO maintains a long range transportation plan for the Birmingham MPA that is:

- Technically based on the latest available data for land use, demographics, and travel patterns.
- Comprehensive in nature and supports the development of a multimodal transportation system.
- Philosophically based on regional goals and values.
- Financially based on predictable, reliable funding sources.

#### Previous Work

The 2040 Regional Transportation Plan (RTP) is under development with the 2010 Census data being collected and analyzed as it becomes available. The MPO is aware that its MPA boundaries will, mostly likely, be expanding.

An FHWA scenario planning workshop was conducted for use with the 2040 RTP.

#### Proposed Work

- **Data Preparation and Analysis** - Data will continue to be collected and/or assembled for use in the preparation of reports and analysis of proposed project and policy recommendations.
- **Infrastructure Cost Evaluation** - Regional and local data will be collected to inform the calibration of an infrastructure cost calculator so that project implementation, and ongoing operations and maintenance costs might be accurately developed for use in fiscal planning activities.
- **Continued development of functional components and policies** - Continued development of plan functional elements will be continued in order that the 2040 plan's project and program recommendations might be informed.
- **Stakeholder and public outreach** - Key plan stakeholders and the public will be engaged in order to define plan scenarios and provide input on recommended strategies and projects.
- **Scenario Planning** - Plan scenarios will be developed and analyzed in order to identify a preferred development scenario that will inform the regional transportation plan's proposed modal projects and programs, as well as MPO investment activities.
- **Project Evaluation and Prioritization** - Automation of the Birmingham MPO's project evaluation and prioritization methodology in order to provide faster and more accurate outputs in order to inform MPO project/program investments and future TIP development.

Decision support software will be purchased to assist in scenario planning and prioritization.

#### Products

##### A. Functional Plans

1. Regional Thoroughfare Plan (see Task 5.4 for details)
2. Comprehensive Transit Development Program (see Task 5.5 for details)
3. Active Transportation Plan (see Task 5.6 for details)
4. Regional Logistics Strategy (see Task 5.7 for details)
5. Congestion Management Process (includes ITS Architecture and deployment strategy and Incident Management Plan) (see Task 5.8 for details)

6. Transportation Safety Plan (see Task 5.9 for details)
7. Infrastructure Development and Ongoing Operations and Maintenance Cost Evaluations
8. Project Evaluation, Prioritization, Implementation Monitoring Tool(s)

**B. Regional Transportation Plan**

1. Air Quality Conformity Report
2. Regional Transportation Plan Development Process
3. Regional Transportation Plan Component Reports
4. Stakeholder and Public Outreach and Education i.e. speakers, workshops and conferences
5. Public Involvement Activities and Collateral Materials

**Staffing**

Regional Planning Commission of Greater Birmingham, direct contract labor and/or third-party contractors for activities, and organizations identified under Proposed Work.

**Timeline for Proposed Work**

Regional Transportation Plan Development Process - Spring 2012

Regional Transportation Plan Stakeholder and Public Outreach and Education – Fall/Winter 2012 and Spring/Summer 2013

**Financial Responsibility**

Total	<u>\$168,750</u>
PL (FHWA)	\$135,000
Local	\$ 33,750

## 5.1.1 Air Quality Conformity Analysis and Reporting (RTP)

### Objectives

To demonstrate that the Regional Transportation Plan, and the funded projects and programs contained within it i.e. the Transportation Improvement Program conform to the approved regional air quality standards as determined by the State Implementation Plan which is prescribed by the Clean Air Act of 1990.

### Previous Work:

**Motor Vehicle Emissions Simulator (MOVES) Implementation** - The RPCGB has completed its migration from MOBILE 6 to the Motor Vehicle Emissions Simulator (MOVES) model, and has been fully integrated into the regional travel demand modeling effort, as well as applied to the ongoing development and monitoring of the Regional Transportation Plan.

**Training Events** - The Birmingham MPO, in conjunction with the Alabama Department of Transportation, hosted the U.S. Environmental Protection Agency as they conducted MOVES training. RPCGB staff attended the training and learned how to apply MOVES to project level analysis, and will employ this more detailed process in the FY 2011 annual report.

**Annual Summary Report of Emissions Reductions** - A public involvement meeting for modifications to air quality conformity report was held in October 2010. Results were documented and approved by the MPO.

**Air Quality Conformity Analysis and Reporting** - A transportation conformity analysis for 24-hour PM2.5 standard was completed and approved in December 2010. The RPCGB is heavily involved in working with the IAC to review proposals related to air quality and to recommend means to reduce emissions and congestion.

An air quality conformity determination report for the amended 2035 Regional Transportation Plan (RTP) and the FY 2012-2015 Transportation Improvement Program (TIP) for Jefferson and Shelby Counties and a portion of Walker County in Alabama, was adopted by the Birmingham MPO September 2011.

### Proposed Work

- **Ongoing Air Quality Monitoring** - Annual Summary Report of Emissions Reductions is produced to document reductions achieved through projects funded with CMAQ funding. Additional monitoring is conducted in order to assess the impacts of changes to federal regulations on the Birmingham MPA.
- **System Level Conformity Determination** - A quantitative demonstration is conducted for the geographic area designated as nonattainment to determine if motor vehicle emissions exceed the established budget. Also supports Climate Change (see Task 4.4 for details). Project schedule changes for existing highway capacity projects can result in adjusted air quality conformity years (open to traffic). Such adjustments require modifications to the transportation network and an air quality conformity determination. Proposed new highway capacity projects constituting a Plan amendment are subject to assignment to an air quality conformity year and a system level conformity determination.

**Products**

- Annual Summary Report of Emissions for FHWA that documents total emissions achieved for projects funded with CMAQ monies
- An Air Quality Conformity Report that demonstrate that total projected emissions are within the allowable limits - Annually and As Needed based on Modifications to the RTP
- Hot Spot Analysis Comments and/or Documentation

**Staffing**

Regional Planning Commission of Greater Birmingham

**Timeline for Proposed Work**

- Air Quality Conformity Report for Amended 2035 RTP- January 2012
- Annual Summary Report of Emissions – February 2012
- Hot Spot Analysis Comments and/or Documentation - As Needed

**Financial Responsibility**

Total	\$ 25,000
PL (FHWA)	\$ 20,000
Local	\$ 5,000

## 5.1.2 Amended Regional Plan Project Listings for Air Quality Conformity

### **Objectives**

To amend the Regional Transportation Plan as necessitated by additions and deletions to the Regional Transportation Plan project and program listings, and modifications to existing project scopes of work and budgets.

### **Previous Work**

Plan modifications and updates

### **Proposed Work**

Project schedule changes for existing highway capacity projects can result in adjusted air quality conformity years (open to traffic). Such adjustments require modifications to the transportation network and an air quality conformity determination to ensure that emissions from transportation sources do not exceed established emissions budget for each conformity attainment year.

In addition, proposed new highway capacity projects constituting a Plan Amendment are subject to assignment to an air quality conformity year and a system level conformity determination.

### **Products**

- Project listing tables
- Project maps
- Revised financial tables

### **Staffing**

Regional Planning Commission of Greater Birmingham.

### **Timeline for Proposed Work**

None

### **Financial Responsibility**

Total	<u>\$ 12,500</u>
PL (FHWA)	\$ 10,000
Local	\$ 2,500

## 5.2 Transportation Improvement Program (TIP)

### Objectives

To develop a list of federally funded transportation projects to be completed by the ALDOT, the BJCTA, local government, and other project sponsors. Monitor the program balance and the status of projects programmed under the STPBH and the CMAQ. Administer TIP Amendment requests.

### Previous Work

Developed and adopted the FY 2012-2015 TIP. Current projects were reviewed and future phases identified. Available balance for new projects was calculated and input for new projects was solicited from cities, counties, ALDOT, and the BJCTA. The TIP Subcommittee developed a draft list which was sent to ALDOT and recommended for adoption by the MPO.

### Proposed Work

- Project Development to develop projects in a timely manner, assess eligibility for federal funding, and determine scopes of work prior to seeking federal funds through the TIP process.
- TIP Subcommittee Meetings and Reports to monitor program balance and project advancement.
- TIP Amendments will be made, as needed, as projects are monitored.
- Annual Progress Status Report documentation of status for all programmed projects, and particularly CMAQ and STPBH projects.
- Fund Re-Balancing pursuant to SAFETEA-LU requirements using TELUS Software.
- Communications between ALDOT and MPO staff on program.
- Regionally Significant Projects that are non-federally funded will be listed.
- Annual Obligations Listing of projects for the previous fiscal year will be printed and posted.
- TIP Development.

### Products

- Amendments to TIP
- TIP Project Status Report
- Annual Listing of Obligated Projects

### Staffing

Regional Planning Commission of Greater Birmingham

### Timeline for Proposed Work

Annual Listing of Obligated Projects – October 2011

### Financial Responsibility

Total	\$106,250
PL (FHWA)	\$ 85,000
Local	\$ 21,250



## 5.2.1 Amended TIP Project Listings for Air Quality Conformity

### **Objectives**

To amend the Transportation Improvement Plan both annually and as necessitated by additions and deletions to the Regional Transportation Plan project and program listings, and modifications to existing project scopes of work and budgets.

### **Previous Work**

Plan modifications and updates

### **Proposed Work**

Annual Rebalancing of Transportation Improvement Program  
Air Quality Conformity Determination

**Task Description** - The Regional Planning Commission of Greater Birmingham rebalances the Transportation Improvement Program annually. In addition, there are occasions when new highway capacity projects are requested to be added to the Transportation Improvement Program. These additions necessitate modifying the Regional Transportation Plan and are subject to assignment to an air quality conformity year and a system level conformity determination. In short, the amendment to the Transportation Improvement Program constitutes a Plan Amendment.

In addition, project schedule changes for existing highway capacity projects within the Transportation Improvement Program also result in adjusted air quality conformity years (open to traffic). Such adjustments require modifications to the transportation network and an air quality conformity determination to ensure that emissions from transportation sources do not exceed established emissions budget for each conformity attainment year.

### **Products**

- Project listing tables
- Project maps
- Revised financial tables
- Annual CMAQ obligated project emissions report

### **Staffing**

Regional Planning Commission of Greater Birmingham.

### **Timeline for Proposed Work**

Annual CMAQ obligated project emissions report – March 2012

### **Financial Responsibility**

Total	\$12,500
PL (FHWA)	\$10,000
Local	\$ 2,500

### 5.3 Thoroughfare Planning

#### **Objectives**

- To establish a baseline roadway network plan that addresses capacity needs for existing functionally classified roadways.
- To identify future roadway network needs and connections.
- To address issues of transportation system preservation and sustainability.
- To address transportation system security by planning for the provision of a redundant network that identifies travel route alternatives.

#### **Previous Work**

- Regional Thoroughfare Plan policy document and recommendations
- Regional Thoroughfare Plan Document
- Regional Thoroughfare Plan Map
- Functional Classification Map (updated)
- Local Thoroughfare Plan Development Guide

#### **Proposed Work**

- Green Streets Development Guide, i.e., green solutions for transportation-related stormwater management
- Roadway Design Guidebook

#### **Products**

- Regional Thoroughfare Plan Map
- Green Streets Development Guide and Best Practices
- Roadway Design Guidebook

#### **Staffing**

Regional Planning Commission of Greater Birmingham, direct contract labor and/or third-party contractors for activities, and organizations identified under Proposed Work.

#### **Timeline for Proposed Work**

Green Streets Development Guide and Best Practices – Spring 2012

#### **Financial Responsibility**

Total	\$37,500
PL (FHWA)	\$30,000
Local	\$ 7,500

## 5.4 Public Transportation Planning

### Objectives

Assist with continued development of public transportation services by aiding public transportation providers with planning, service delivery, and long term financing strategies by:

- Updating BJCTA Transit Development Plan (TDP).
- Identifying strategies that sustain, maintain, and improve public transit services.
- Reviewing and revising existing public transportation and paratransit policies, and identify needed policies.
- Acquiring analyze, and maintain data.
- Providing training.

### Previous Work

- Collected ridership data for all BJCTA routes
- Performed on-board transit survey
- Developed Reports
- Developed Maps and Other Analytical Tools
- Assisted BJCTA with Analyzing Route Performance
- Performed Transit Corridor Studies

### Proposed Work

#### **A. Plan and Policy Development**

1. Update BJCTA TDP - Update the existing TDP and Operations Analysis to refine maps, evaluate transit routes, and identify both passenger and system-wide needs.
2. Integrated Regional Transit Service Plan - Develop an integrated regional transit service plan in order to identify specific routing/alignments, service hours, frequencies, technologies, amenities, fare structures, and prioritized service implementation/deployment strategies.
3. Service Development Policy Manual - Create a manual for crush capacities, standard headways, bus stop requests and installation procedures, and route alignment and elimination.
4. Update Public Involvement Process - A portion of the update will include public outreach/involvement specifically designed to reach beneficiaries of Title VI.
5. Develop a Fare Card Deployment Plan - Provide guidance for the installation of magnetic fare media.
6. Development of a Marketing Plan – Develop plan to increase ridership, developing public/private partnerships, and investigate the utilization of social media for marketing and service information.

#### **B. Data Collection and Analysis**

1. Ongoing transit system route audits to collect and analyze route specific ridership and system performance.
2. Passenger and stakeholder surveys will assist in determining passenger needs and the development of the TDP.

#### **C. Customer Service and Communications Improvements**

Develop transit guide for trip planning.

**Products**

- 2012 - 2016 BJCTA TDP
- Integrated Regional Transit Service Plan
- Service Development Policy Manual
- Marketing Plan
- Riders Guide
- Stakeholder and Public Involvement Activities, Outreach, and Collateral Materials
- Route and System Maps
- Fare Card Deployment Plan

**Staffing**

Regional Planning Commission of Greater Birmingham, other transit providers, direct contract labor and/or third-party contractors for activities, and organizations identified under Proposed Work.

**Timeline for Proposed Work**

- 2012 - 2016 BJCTA TDP – January 2012
- Integrated Regional Transit Service Plan – Summer 2012
- Service Development Policy Manual – Summer 2012
- Marketing Plan – Summer 2012
- Riders Guide – Summer 2012
- Route and System Maps – Summer 2012

**Financial Responsibility**

Total	\$187,500
PL (FHWA)	\$150,000
Local	\$ 37,500

## 5.5 Active Transportation Planning

### Objectives

To support regional connectivity and active transportation networks utilizing multimodal streets, greenways, parks, and other public greenspace by establishing short-term and long-term implementation strategies.

### Previous Work

- Active Transportation Plan
- Safe Routes to School (SRTS) workshops and assistance to local governments
- Bike-to-Work Day and Walk-to-School Day Activities
- University specific bicycle parking program (Samford University)
- General Bicycle Parking Program
- Hosted Complete Streets Technical Training Event
- The RPCGB directly facilitated or helped to facilitate several workshops/conferences, such as Building Communities, Complete Streets, SRTS, and local projects.

### Proposed Work

- **Re-establish and Manage MPO Active Transportation Committee** – Reestablish and manage MPO Active Transportation Committee
- **Active Transportation Plan Implementation** - Implementation of regional greenway trails project with the initiation of the Five Mile Creek partnership; planning of the Jefferson County Greenways Master Plan entitled Our One Mile; and assist with the development of this project and identify additional opportunities to assist with the development of greenway/trail infrastructure.
- **Regional Greenway Planning** - Development of an MPA specific greenway plan to supplement recommendations for on-street bicycle and pedestrian facilities identified in the Birmingham Regional Active Transportation Plan. The focus area will address greenways and/or trails in Shelby County, and look at ways to integrate planned trail facilities, planned Jefferson County greenways, and trails on the State’s recreational trails.
- **Local Planning Assistance** - Coordinate with non-profit and advocacy bicycle, hiking, pedestrian and public transit groups in order to provide assistance with planning and development of greenways and/or trails, on-street bike and sidewalk facilities and transit facilities.
- **Safe Routes to School Toolkit** - A toolkit will be developed to serve as a resource for area school districts. The toolkit will be promoted with collaboration from a number of partner and stakeholder organizations and will be made available in hard copy and online.
- **Education and Outreach Activities** - Assist local governments and other stakeholders with planning, funding, and implementing bikeways, walkways, and other non-motorized transportation projects. Ongoing programmatic activities associated with improving non-motorized transportation on a regional level are equally important.
  - Online Communications Forum
  - Bike Route and Trail Mapping
  - Regularly Scheduled Training, Education, and Outreach Activities

**Products**

- MPO Active Transportation Committee Management
- Regional Greenway Plan
- Five Mile Creek Partnership
- Our One Mile Greenways/Trail Implementation
- SRTS Toolkit
- Education Events and Workshops
- Stakeholder/Public Outreach Activities

**Staffing**

Regional Planning Commission of Greater Birmingham, direct contract labor and/or third-party contractors for activities, and organizations identified under Proposed Work.

**Timeline for Proposed Work**

- Regional Greenway Plan – September 2012
- SRTS Toolkit – Spring 2012

**Financial Responsibility**

Total	<u>\$12,500</u>
PL (FHWA)	\$10,000
Local	\$ 2,500

## 5.6 Logistics Systems Planning

### Objectives

To develop a regional multimodal goods movement transportation strategy that will identify improvement for freight movements.

### Previous Work

- Freight stakeholder meetings
- Summary analysis of FAF2 and FAF3 data
- Freight Roadway Chokepoint Analysis
- Freight System Data Collection

### Proposed Work

- **Stakeholder Outreach** - Stakeholders will be engaged in order assess needs and continue established dialogue.
- **Data Collection** - Continue freight system data collection efforts utilizing both publicly available and privately held data.
- **Freight Flows** - Using the data that is collected regarding freight resources, traffic volumes, and congested conditions, staff will identify and illustrate regional freight flows by mode and travel facility.
- **Freight Forecasting** - Freight movements will be forecast by volume and commodity. This effort will be aided by the use of Cube Cargo software, which offers specific methodologies for freight demand using a commodity-based approach.
- **Project Evaluation** - Using the data collected, staff will develop a set of project evaluation criteria to rank projects and assist in getting them into the appropriate documents.
- **Training** - Staff will attend appropriate training, including the National Highway Institute's two day course, No. 139003 – Advanced Freight Planning and workshop for Engaging the Private Sector in Freight Planning, are the preferred courses. Also, there is value in attending the I-95 Corridor Coalition's Freight Academy at Rutgers.
- **Freight Outlook Plan** - Staff will develop a freight outlook plan for the MPA, in accordance with federal and state legislation, and regional economic needs.

### Products

- Freight Stakeholder Group Management
- Initial Freight Assessment/Profile
- Phase 1 Regional Freight Outlook Plan
- Freight Considerations for Project Evaluation
- Training

### Staffing

Regional Planning Commission of Greater Birmingham

### Timeline for Proposed Work

- Initial Freight Assessment/Profile – Spring 2012
- Phase 1 Regional Freight Outlook Plan – September 2012
- Freight Considerations for Project Evaluation – September 2012

**Financial Responsibility**

Total	<u>\$50,000</u>
PL (FHWA)	\$40,000
Local	\$10,000



## 5.7 Congestion Management Process

### Objectives

To comply with federal regulations for transportation management areas having populations of 250,000 or more to develop and maintain a congestion management process for the purpose of monitoring, managing, and mitigating congestion across the region's transportation system.

### Previous Work

- Ongoing data collection to include traffic counts and monitoring system.
- Bi-Annual Congestion Report.
- Transportation Data Center (Information Clearinghouse) Web Page (activate on the RPCGB website.
- Ongoing coordination for Incident Management.
- Traffic counts continue to be gathered, analyzed, and posted to the RPCGB website. Travel time information has been collected in a variety of formats.
- The RPCGB has met with the Jefferson County Emergency Management Agency and the City of Hoover to discuss options for improving information exchange. WebEOC software enables city agencies to communicate. Staff is waiting on a cost estimate for the software.

### Proposed Work

#### **A. Congestion Management Process Administration**

1. Congestion Management Committee Administration.
2. Transportation System Data Collection (see Tasks 2.1 and 2.5).
3. Transportation System Data Center to be designed and implemented for the Birmingham Regional Transportation Data Center. The website will serve as a clearinghouse and public access for information.
4. Performance Reporting. A bi-annual congestion report will be developed for the Birmingham MPA. Staff will participate in and contribute to quarterly meetings of the Congestion Management Committee.

#### **B. Incident Management Plan** - The Birmingham Regional Incident Management Function will continue its work to improve communications between first responders, the ALDOT, and the traveling public, and serve as the steering committee for the development of a regional incident management plan. Proposed actions and strategies include:

1. Communications software and equipment and necessary support will be purchased and installed.
2. Pavement/barrier markings to assist emergency responders and travelers to identify location.
3. Post-incident review and debriefings from incidents will be organized.
4. Towing and recovery program to clear traffic crashes in a timely and efficient manner.

#### **C. Transportation Management and Operations** - Plan to include updating the Regional Intelligent Transportation Systems Architecture and developing a Transportation Systems Operations Plan to establish cross-jurisdictional coordination of signal and monitoring systems.

### Products

- Congestion Management Process
- Incident Management Plan
- Transportation Management and Operations Plan
- Congestion Management Bi-Annual Report
- Communications software for incident management

- Software and program incentives as recommended by the Incident Management Plans
- Transportation System Operations Plan

**Staffing**

Regional Planning Commission of Greater Birmingham, direct contract labor and/or third-party contractors for activities, and organizations identified under Proposed Work.

**Timeline for Proposed Work**

- Incident Management Plan – Spring 2012
- Transportation Management and Operations Plan – Fall 2012
- Congestion Management Bi-Annual Report -Winter 2011/Spring 2012
- Transportation System Operations Plan – Fall 2012

**Financial Responsibility**

Total	<u>\$312,500</u>
STPBH (FHWA)	\$200,000
PL (FHWA)	\$ 50,000
Local	\$ 62,500

## 5.8 Transportation Safety Planning

### **Objectives**

To incorporate transportation safety into the planning process and improve transportation safety in the community.

### **Previous Work**

US 78 Corridor Coalition Safety Plan

### **Proposed Work**

- Monitor the CARE database, collect crash data when necessary, and identify trends to inform the planning process. Original data will be collected, when necessary, specifically as it relates to non-motorized and truck collisions.
- Support the Jefferson State College transportation safety education program by providing material aid for seminars, lectures, and experiential driving and crash demonstrations. This might also include the purchase of educational equipment and supplies to support outreach and education activities.
- General Safety Education of the Public about driver behaviors that impact traveler safety.

### **Products**

- Regional and Facility Specific Crash Profile Report
- Transportation System Safety Training, Discussion Forums, and Experiential Activities
- MPA Specific Safety Plan
- Corridor Specific Safety Plan(s)
- Public Service Announcements

### **Staffing**

Regional Planning Commission of Greater Birmingham, direct contract labor and/or third-party contractors for activities, and organizations identified under Proposed Work.

### **Timeline for Proposed Work**

- Regional and Facility Specific Crash Profile Report – September 2012
- MPA Specific Safety Plan – September 2012
- Corridor Specific Safety Plan(s) – September 2012

### **Financial Responsibility**

Total	<u>\$12,500</u>
PL (FHWA)	\$10,000
Local	\$ 2,500

This page left intentionally blank

## TASK 6.0: PROGRAMS

### 6.1 CommuteSmart Program (Rideshare)

#### Objectives

To reduce reliance on the single-occupant automobile through programs that result in air emissions reductions.

#### Previous Work

Ongoing activities have been conducted for employer-based outreach programs, vanpool operations services, and park-and-ride lot development. An annual report documenting accomplishments was prepared and printed.

#### Proposed Work

- **Outreach and Marketing Activities** - Designed to increase the number of employers who encourage use of commuting alternatives and the number of participants in the program.
- **Turn-Key Vanpool Operations Services**
- **Park and Ride** - Increase number of locations for park and ride, install directional signs on roadways, and increase marketing efforts.

#### Products

- Document emissions reduction estimates – January 2012
- Outreach and Marketing of Vanpool and Rideshare Programs - Ongoing
- Outreach and Marketing of Park and Ride Program - Ongoing
- Annual Report – January 2012

#### Staffing

Regional Planning Commission of Greater Birmingham, direct contract labor and/or third-party contractors for activities, and organizations identified under Proposed Work (VPSI \$400,000 and marketing/media \$200,000).

#### Timeline for Proposed Work

- Document emissions reduction estimates – January 2012
- Annual Report – January 2012

#### Financial Responsibility

Total	\$1,200,000
STPBH (FHWA)	\$1,200,000
Local	\$0

## 6.2 Coordinated Human Services Transportation Planning

### Objectives

To develop and maintain the Human Services Coordinated Transportation Plan (HSCTP) that identifies strategies for coordinating improving mobility for transportation disadvantaged individuals and to administer the local FTA Section 5316 Job Access Reverse Commute (JARC) and Section 5317 New Freedom programs.

### Previous Work

- A competitive process for JARC and New Freedom projects was conducted and programmed in the TIP for FY 2011.
- MPO staff conducted bids for acquiring project vehicles.
- Staff participates in monthly meetings of the statewide Alabama Transit Coalition and works with cities and counties to improve coordination.
- The HSCTP update was completed and approved by the MPO.

### Proposed Work

- **Maintain and Update the HSCTP** - Review and revise the Coordinated Human Service Transportation Plan for the Greater Birmingham region to reflect current and changing needs of the area.
- **Administer FTA Sections 5316 and 5317 (JARC/New Freedom)** - Conduct a competitive selection process for funding projects and ensure that each project selected is in compliance with the HSCTP. Ensure JARC and New Freedom dollars are programmed into the TIP and the Statewide Transportation Improvement Program.

### Products

- Update HSCTP - As needed.
- Maintain ad hoc Human Services Transportation Committee – As needed
- Assist local organizations in implementation of projects funded under JARC and New Freedom

### Staffing

Regional Planning Commission of Greater Birmingham

### Timeline for Proposed Work

Assist local organizations in implementation of projects funded under JARC and New Freedom – October - December 2012

### Financial Responsibility

Total	\$62,500
5316/5317 (FTA)	\$50,000
PL (FHWA)	\$10,000
Local	\$ 2,500

## **6.3 Building Communities Program**

### **Objectives**

To provide grants to local communities within the Birmingham MPA for projects, strategies, and services that support the SAFETEA-LU planning factors, including transportation and land use integration, economic vitality, safety and security, accessibility and mobility, environmental/air quality, and system preservation.

### **Previous Work**

- Highland Park Neighborhood Assessment and Zoning Code Review.
- City of Vestavia Hills Zoning Ordinance and Subdivision Regulations Update.
- City of Vestavia Hills Cahaba Heights Neighborhood Plan.
- City of Graysville Form Based Codes.
- City of Calera Comprehensive Plan Update.
- City Center One-Way Street Conversion Study.
- City of Bessemer Transportation/Transit Plan, Master Plan Update, Form Based Code Overlay.
- Birmingham/Fountain Heights 16<sup>th</sup> Street Corridor Design Plan.
- City of Irondale U.S. 78 Corridor Study.
- City of Birmingham Collegeville Plan and Access Study.

Projects currently in progress and scheduled to be completed in fiscal year 2011 include:

- City of Bessemer Transportation/Transit Plan, Master Plan Update, Form Based Code Overlay.
- City of Fairfield Comprehensive Plan.
- City of Chelsea Major Street Plan, Zoning Ordinance and Subdivision Regulations Update.
- City of Leeds Update Master Plan and Major Street Plan.
- Strategic Plan for Implementation of the Five Mile Creek Trail Location Study.

### **Proposed Work**

A negotiated process between the RPCGB and MPO governments is used to develop Building Communities projects consistent with eligible transportation and land use activities. Land use and transportation needs are identified, a determination is made for consistency with Building Communities' goals, a project scope of work and budget are developed, and a cost sharing agreement is made. The MPO will document projects in a semi-annual report.

Projects currently in progress and scheduled to be completed in fiscal year 2012 include:

- I-20/59 Lowering Project.
- Montevallo streetscape and code update (Shelby County).

Projects currently being negotiated include:

- Titusville neighborhood transportation plan (City of Birmingham).
- Gardendale Benchmark Plan
- Vestavia Hills Benchmark Plan
- Shelby County Rails- to-Trails Conversion Study
- An additional \$285,550 has been programmed for potential projects.

- **Comprehensive Transportation Plan (CTP)** - This will serve as the blueprint to improve and maintain the transportation system and is multi-modal in nature, consisting of four elements: roadways, bicycle and pedestrian facilities, transit and land use.
- **Corridor Transportation Plan** - For the purposes of this program, a corridor is defined as being ¼ mile wide and should be functionally classified as major collectors or higher.
- **Sub-Area Transportation Plan** – This is similar to the CTP, but breaks out a smaller geographic area. It may provide a narrower focus, concentrating on specific transportation system elements, development, and/or services. The relationship between transportation and land use must be clearly articulated, considering the impacts to “regionally significant” roadways and may include:
  1. Neighborhood Transportation Plan.
  2. Station Area Plan for Public Transportation.
  3. Activity Center Transportation Plan.
- **Non-Motorized Transportation Plan** - Identifies the means to establish a physical and cultural environment that supports and encourages safe, comfortable, and convenient ways for pedestrians and bicyclists to travel throughout their community. This would include walking, bicycling, small-wheeled transport (skates, skateboards, push scooters, and hand carts), and wheelchair travel.
- **Administrative and Regulatory Tools** – Implements and/or enforces all or part of an adopted plan document.

**Products**

Plans and programs suitable for implementation

**Staffing**

Regional Planning Commission of Greater Birmingham, direct contract labor and/or third-party contractors for activities, and organizations identified under Proposed Work

**Timeline for Proposed Work**

None

**Financial Responsibility**

Total	<u>\$731,250</u>
STPBH (FHWA)	\$585,000
Local	\$146,250



## TASK 7.0: SPECIAL PROJECTS AND CORRIDOR PLANNING

### 7.1 U.S. 280 Corridor Alternatives Analysis

#### **Objectives**

To perform an Alternatives Analysis consistent with FTA guidelines for potential New Starts/Small Starts projects, including land use and highway alternatives, such as the proposed Elevated Toll Road.

#### **Previous Work**

Data collection, surveys, public involvement, and needs analysis have been completed. The fatal flaw analysis was conducted for a light rail alternative eliminating this option. Project team is completing land use plans, alignments for transit infrastructure, and potential transit station locations.

#### **Proposed Work**

Completion and reproduction of the final report.

#### **Products**

Final report

#### **Staffing**

Regional Planning Commission of Greater Birmingham, direct contract labor and/or third-party contractors for activities, and organizations identified under Proposed Work.

#### **Timeline for Proposed Work**

Final report – October 2011

#### **Financial Responsibility**

Total	\$125,000
5309 (FTA)	\$100,000
Local	\$ 25,000

## 7.2 I-65/U.S. 31 Corridor Alternatives Analysis

### **Objectives**

To conduct an Alternatives Analysis under the FTA's New Starts guidelines to explore and define roadway and transit alternatives in the I-65 and U.S. 31 corridor through a series of successive study tasks that include a public engagement program, a scoping process, conceptual definition of alternatives, planning and conceptual engineering, analysis and refinement of alternatives, and the selection of a locally preferred alternative.

### **Previous Work**

The Tier 2 analysis and report are complete, with the locally preferred alternative being identified as a high occupancy vehicle lane with bus rapid transit.

### **Proposed Work**

- Locally preferred alternative will be analyzed for environmental impacts
- Completion of the draft Environmental Assessment report

### **Products**

Draft Environmental Assessment report

### **Staffing**

Regional Planning Commission of Greater Birmingham, direct contract labor and/or third-party contractors for activities, and organizations identified under Proposed Work.

### **Timeline for Proposed Work**

Draft Environmental Assessment report – November 2011

### **Financial Responsibility**

Total	<u>\$62,500</u>
5309 (FTA)	\$50,000
Local	\$12,500

### **7.3 U.S. 11 Southwest Corridor Alternatives Analysis**

#### **Objectives**

Provide public transportation alternatives to improve travel in the U.S. 11 Southwest corridor. This would include alternatives that augment, support, and complement previous recommendations to improve non-motorized travel, expand roadway capacity, and manage access to U.S. 11 Southwest.

Provide land development/redevelopment scenarios along the U.S. 11 Southwest corridor that are supportive of the potential alternatives for transportation system improvements, influencing the character of the transportation system where appropriate, and responding to needs.

#### **Previous Work**

- Onboard transit survey and analysis
- Establish project study area
- Public engagement and stakeholder outreach
- Data collection and analysis
- Existing Conditions Report
- Travel Demand Model Modifications

#### **Proposed Work**

Completion and Reproduction of Final Report to include:

- Public Involvement Report
- Definition of Alternatives
- Comprehensive Corridor-Wide Vision for Development
- Transit Modal and Alignment Alternatives
- Corridor-Wide Land Use and Transportation System Development Scenario
- Detailed Transit Station Area Plans
- Detailed Development Proformas
- Area Specific Implementation Strategies
- Implementation and Funding Strategy for Land Use and Transportation System Improvements

#### **Products**

- Final Report with Locally Preferred Alternative
- Area Specific/ Detailed Station Area Plans
- Project Visualization
- Implementation and Financing Strategy
- Mitigation and/or Action Agreements
- Environmental Documentation

#### **Staffing**

Regional Planning Commission of Greater Birmingham, direct contract labor and/or third-party contractors for activities, and organizations identified under Proposed Work.

#### **Timeline for Proposed Work**

- Final Report with Locally Preferred Alternative – Spring 2012
- Area Specific/ Detailed Station Area Plans – Fall 2011
- Project Visualization – Spring 2012

- Implementation and Financing Strategy – Summer 2012
- Mitigation and/or Action Agreements – Summer 2012
- Environmental Documentation – Summer 2012

**Financial Responsibility**

Total	<u>\$436,388</u>
5309 (FTA)	\$349,110
Local	\$ 87,278

## 7.4 U.S. 11 East /U.S. 78 East Alternatives Analysis

### Objectives

Provide public transportation alternatives to improve travel in the U.S. 11/U.S. 78 East corridor. This includes exploration of public transportation alternatives for travel between Downtown Birmingham and the Birmingham-Shuttlesworth International Airport.

### Previous Work

- Regional Transit Alternatives Analysis; i.e., Transit System Plan
- Building Communities Project - City of Leeds Master Plan

### Proposed Work

Anticipated work activities will consider alternatives that augment, support, and complement recommendations to improve existing transit services, non-motorized travel, and roadway operations and management. The study will also provide land development/redevelopment scenarios for the proposed travel corridor. Specific activities include:

- **Public Engagement and Stakeholder Outreach Process** - Seek to use innovative strategies to secure input regarding plan scenario development, potential alignment/routing, and technology alternatives.
- **Data Collection and Analysis** – Conduct using a variety of technical tools.
- **Comprehensive Corridor-Wide Vision for Development** - Will guide detailed station area planning activities.
- **Identification of Transit Modal and Alignment Alternatives** – Identify based on the development of a preferred corridor vision.
- **Corridor-Wide Land Use and Transportation System Development Scenarios** - Developed and assessed as to how well each helps the corridor’s accessibility, mobility, and connectivity.
- **Detailed Transit Station Area Plans** - Developed in order to address and/or guide land use, urban design, economic opportunities, social services, community and civic infrastructure/services, and other quality of life issues.
- **Detailed Development Templates** - Developed for the governing organization to secure financing and recruit development.
- **Area Specific Implementation Strategies** - Specific to each station area and the “wedges” in between will be developed to provide guidance for advancing plan concepts and recommendations.
- **Implementation and Funding Strategies** - Looks at a variety of different revenue sources and their appropriateness will be identified.

### Products

- Project Management Plan – Fall 2011
- Public Involvement and Outreach Plan – Fall 2011
- Public and Stakeholder Outreach Events - Ongoing
- Data Dictionary/Documentation - Ongoing
- Map Products - Ongoing
- Corridor Concept Alternatives – Summer 2012
- Environmental Screening Document – Summer 2012

**Staffing**

Regional Planning Commission of Greater Birmingham, direct contract labor and/or third-party contractors for activities, and organizations identified under Proposed Work.

**Timeline for Proposed Work**

- Project Management Plan – Fall 2011
- Public Involvement and Outreach Plan – Fall 2011
- Corridor Concept Alternatives – Summer 2012
- Environmental Screening Document – Summer 2012

**Financial Responsibility**

Total	<u>\$2,493,524</u>
5309 (FTA)	\$1,994,819
Local	\$ 498,705

## 7.5 U.S. 78 West Corridor Plan

### Objective

- To evaluate the continued feasibility of a programmed roadway widening project in light of the development of I-22 Corridor (Corridor X), a parallel interstate roadway.
- To reevaluate the US 78 corridor's land use configuration and orientation, particularly for communities affected and/or destroyed by the April 2011 tornadoes.
- To identify specific land use strategies that accomplish recommendations identified in the US 78 Corridor Coalition Safety Study.
- To achieve livability goals through transportation solutions as specified by the Federal Highway Administration, the U.S. Environmental Protection Agency, the Federal Transit Administration, and the U.S. Department of Housing and Urban Development.

### Previous Work

US 78 Corridor Coalition Safety Study

### Proposed Work

The Regional Planning Commission of Greater Birmingham will conduct a corridor study for US 78 to evaluate the continued feasibility of programmed roadway capacity expansions in light of the construction of Interstate 22 (Corridor X), a parallel freeway. Specific work will analyze traffic flow and volumes, shifts in demands, and the impact of I-22's construction on freight movement in the US 78 corridor. The project will also consider ways to achieve federal livability goals by considering both transportation and land use solutions. Particular attention will be paid to areas affected by and/or destroyed by the April 2010 tornadoes.

### Products

Corridor Plan with the following recommendations:

- Corridor Wide Transportation System Improvements
- Corridor Wide Land Use Improvements
- Area Specific Transportation System Improvements
- Area Specific Land Use Improvements
- Recommended Actions

### Staffing

Regional Planning Commission of Greater Birmingham

### Timeline for Proposed Work

None

### Financial Responsibility

Total	\$25,000
PL (FHWA)	\$20,000
Local	\$ 5,000

This page left blank intentionally



# APPENDICES

## LIST OF ACRONYMS

ADEM .....	Alabama Department of Environmental Management
ALDOT .....	Alabama Department of Transportation
APCA.....	Alabama Partners for Clean Air
BJCTA.....	Birmingham Jefferson County Transit Authority
CMAQ.....	Congestion Mitigation Air Quality
COOP .....	Continuity of Operations Plan
CTP .....	Comprehensive Transportation Plan
EPA .....	Environmental Protection Agency
FHWA .....	Federal Highway Administration
FTA .....	Federal Transit Administration
GHG.....	Greenhouse Gas(es)
GIS .....	Geographic Information System
HSCTP .....	Human Services Coordinated Transportation Plan
IAC .....	Inter(agency) Consultation
JCDH .....	Jefferson County Department of Health
JARC.....	Job Access Reverse Commute Program
L RTP.....	Long Range Transportation Plan
MOVES(2010a) .....	Motor Vehicle Emissions Simulator
MPA.....	Metropolitan Planning Area
MPO .....	Metropolitan Planning Organization
NEPA.....	National Environmental Policy Act
PL.....	Federal Highway Administration Planning Funds
RTP .....	Regional Transportation Plan
SAFETEA-LU.....	Safe, Accountable, Flexible, and Efficient Transportation Equity Act: A Legacy for Users
SIP.....	State Implementation Plan
SLS .....	State or Local Share
SRTS.....	Safe Routes to School
STP.....	Surface Transportation Program
STPBH.....	Surface Transportation Program for Birmingham
TAZ .....	Traffic Analysis Zones
TDP .....	Transit Development Plan
TIP .....	Transportation Improvement Program
USDOT .....	U.S. Department of Transportation
VMT .....	Vehicle Miles Traveled

**TABLE 1**  
**UNIFIED PLANNING WORK PROGRAM**  
**FY 2012**  
**(Organizational Responsibility)**  
**Federal Dollars (\$) Only**

TASKS	PL	RPC	STATE PLANNING AND RESEARCH FUNDING (SPR)	CONTRACTOR	TOTAL FEDERAL \$
<b>1.0 ADMINISTRATION</b>					
1.1 MPO Administration	\$187,273	\$187,273			\$187,273
1.2 Unified Planning Work Program	\$10,000	\$10,000			\$10,000
1.3 Capital and Operating Purchases	\$65,000	\$0		\$11,600 Citilab – Cube Cargo (Task 2.1) \$9,300 Server for Planning \$7,200 Purchase computers for staff (4) \$3,980 Upgrade software and data capacity of the COOP system (Task 1.5) \$5,120 Upgrade Adobe CS (4) \$1,200 Upgrade Adobe CS 5.5 \$3,760 Purchase of demographic information from Claritas (Task 2.2) \$5,600 Purchase of demographic information from InfoUSA (Task 2.2) \$1,584 Purchase Sketch-up Pro visualization software from Google (Task 6.3) \$1,736 Purchase City Engine visualization software licenses from Google (Task 6.3) \$13,920 GIS maintenance with ESRI(Task 2.4)	\$65,000
1.4 Education and Training	\$10,000	\$10,000			\$10,000
1.5 Continuity of Operations Plan	\$5,000	\$5,000			\$5,000
<b>2.0 PLANNING INFORMATION</b>					
2.1 Data Collection and Forecasting	\$6,200	\$6,200			\$6,200
2.2 Socioeconomic Data Collection and Analysis	\$9,000	\$9,000			\$9,000
2.3 Travel Demand Modeling	\$12,800	\$12,800			\$12,800
2.4 Geographic Information Systems	\$20,000	\$20,000			\$20,000
2.5 Transportation Infrastructure and Operations	\$45,000	\$45,000			\$45,000
<b>3.0 PUBLIC INVOLVEMENT</b>	\$80,000	\$70,000		\$10,000 Annual Building Communities Conference	\$100,000
<b>4.0 ENVIRONMENTAL PROCESS PLANNING</b>					
4.1 Air Quality Planning		\$125,000		\$1,375,000 Alabama Partners for Clean Air	\$1,500,000
4.2 Environmental Consultation Process	\$15,000	\$15,000		\$75,000 Third party contractor	\$90,000
4.3 Advanced Planning, Programming, and Logical Engineering (APPLE)		\$21,000		\$84,000 Third party contractor	\$105,000
4.4 Climate Change	\$5,000	\$5,000			\$5,000
<b>5.0 TRANSPORTATION SYSTEMS</b>					
5.1 Regional Transportation Plan	\$135,000	\$95,000		\$40,000 Third party contractor	\$135,000
5.1.1 Air Quality Conformity Analysis and Reporting (RTP)	\$20,000	\$20,000			\$20,000
5.1.2 Amended RTP Project Listings for Air Quality Conformity	\$10,000	\$10,000			\$10,000
5.2 Transportation Improvement Program (TIP)	\$85,000	\$85,000			\$85,000
5.2.1 Amended TIP Project Listings for Air Quality Conformity	\$10,000	\$10,000			\$10,000
5.3 Thoroughfare Planning	\$30,000	\$10,000		\$20,000 Third party contractor	\$30,000
5.4 Public Transportation Planning	\$150,000	\$80,000		\$70,000 BICTA/Other third party contractors	\$150,000
5.5 Active Transportation Planning	\$10,000	\$10,000			\$10,000

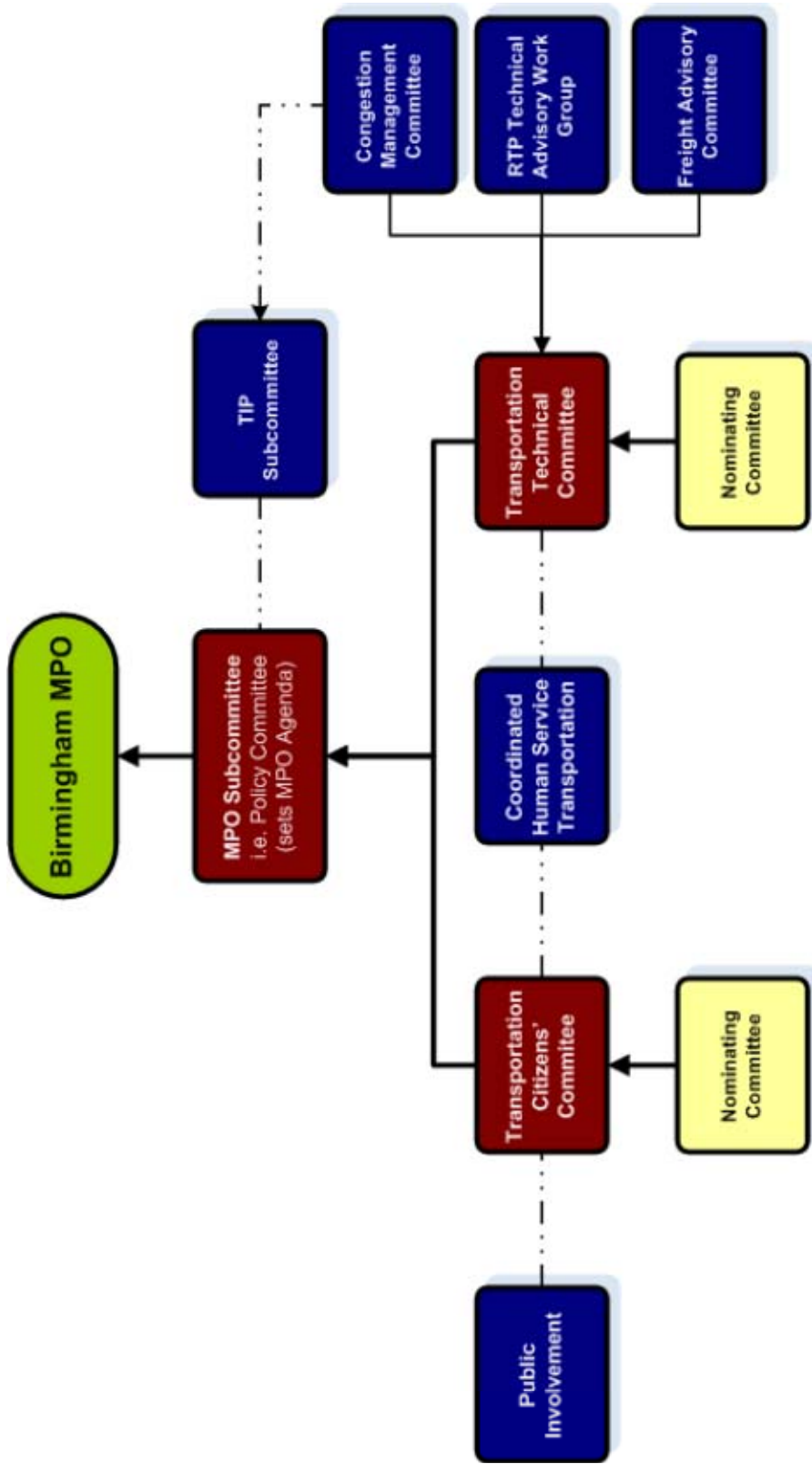
**TABLE 1**  
**UNIFIED PLANNING WORK PROGRAM**  
**FY 2012**  
**(Organizational Responsibility)**  
**Federal Dollars (\$) Only**

TASKS	PL	RPC	STATE PLANNING AND RESEARCH FUNDING (SPR)	CONTRACTOR	TOTAL FEDERAL \$
5.6 Logistics Systems Planning	\$40,000	\$10,000		\$30,000 Third party contractor	\$40,000
5.7 Congestion Management Process	\$50,000			\$250,000 Third party contractor	\$250,000
5.8 Transportation Safety Planning	\$10,000	\$6,000		\$4,000 Third party contractor	\$10,000
<b>6.0 PROGRAM PLANNING</b>					
6.1 CommuteSmart (Rideshare)		\$600,000		\$400,000 VPSI \$200,000 Marketing/Media	\$1,200,000
6.2 Coordinated Human Services Transportation Planning	\$10,000	\$60,000			\$60,000
6.3 Building Communities		\$125,000		\$4,000 Gardendale Benchmark Plan \$20,500 Vestavia Hills Benchmark Plan \$34,500 Titusville North Neighborhood Plan \$40,450 Shelby County Rails-to-Trails Plan \$50,000 I-29/59 Lowering Project \$25,000 Montevallo Streetscape and Code Update \$285,550 Potential Projects	\$585,000
<b>7.0 SPECIAL PROJECTS AND CORRIDOR MANAGEMENT PLANNING</b>					
7.1 U.S. 280 Corridor Alternatives Analysis		\$10,000		\$90,000 RS&H	\$100,000
7.2 I-65/U.S. 31 Corridor Alternatives Analysis		\$5,000		\$45,000 PBS&J	\$50,000
7.3 U.S. 11 Southwest Corridor Alternatives Analysis		\$40,000		\$309,110 PBS&J	\$349,110
7.4 U.S. 11 East /U.S. 78 East Corridor Alternatives Analysis		\$200,000		\$1,794,819 Third party Contractor	\$1,994,819
7.5 U.S. 78 West Corridor Plan	\$20,000	\$20,000			\$20,000
<b>State Planning and Research Funding (SPR)</b>			\$200,000		\$200,000
Total	\$1,050,273	\$1,937,273	\$200,000	\$5,321,929	\$7,479,202

**TABLE 2**  
**UNIFIED PLANNING WORK PROGRAM**  
**FY 2012**  
**(Funding Sources)**

TASKS	FHWA PL:SLS	FTA 5309:SLS	FTA 5316, 5317: SLS	STP:SLS	CMAQ: SLS	ALDOT SUPPORT:SLS	TOTAL FEDERAL:SLS
<b>1.0 ADMINISTRATION</b>							
1.1 MPO Administration	\$187,273 : \$46,818						\$187,273 : \$46,818
1.2 Unified Planning Work Program	\$10,000 : \$2,500						\$10,000 : \$2,500
1.3 Capital and Operating Purchases	\$65,000 : \$16,250						\$65,000 : \$16,250
1.4 Education and Training	\$10,000 : \$2,500						\$10,000 : \$2,500
1.5 Continuity of Operations Plan	\$5,000 : \$1,250						\$5,000 : \$1,250
<b>2.0 PLANNING INFORMATION</b>							
2.1 Data Collection and Forecasting	\$6,200 : \$1,550						\$6,200 : \$1,550
2.2 Socioeconomic Data Collection and Analysis	\$9,000 : \$2,250						\$9,000 : \$2,250
2.3 Travel Demand Modeling	\$12,800 : \$3,200						\$12,800 : \$3,200
2.4 Geographic Information Systems	\$20,000 : \$5,000						\$20,000 : \$5,000
2.5 Transportation Infrastructure and Operations	\$45,000 : \$11,250						\$45,000 : \$11,250
<b>3.0 PUBLIC INVOLVEMENT</b>	\$80,000 : \$20,000		\$20,000	\$5,000			\$100,000 : \$25,000
<b>4.0 ENVIRONMENTAL PROCESS PLANNING</b>							
4.1 Air Quality Planning					\$1,500,000	\$0	\$1,500,000
4.2 Environmental Consultation Process	\$15,000 : \$3,750			\$75,000 : \$18,750			\$90,000 : \$22,500
4.3 Advanced Planning, Programming and Logical Engineering (APPLE)				\$105,000 : \$26,250			\$105,000 : \$26,250
4.4 Climate Change	\$5,000 : \$1,250						\$5,000 : \$1,250
<b>5.0 TRANSPORTATION SYSTEMS</b>							
5.1 Regional Transportation Plan (RTP)	\$135,000 : \$33,750						\$135,000 : \$33,750
5.1.1 Air Quality Conformity Report Preparation (RTP)	\$20,000 : \$5,000						\$20,000 : \$5,000
5.1.2 Amended RTP Project Listings for Air Quality Conformity	\$10,000 : \$2,500						\$10,000 : \$2,500
5.2 Transportation Improvement Program (TIP)	\$85,000 : \$21,250						\$85,000 : \$21,250
5.2.1 Amended TIP Project Listings for Air Quality Conformity	\$10,000 : \$2,500						\$10,000 : \$2,500
5.3 Thoroughfare Planning	\$30,000 : \$7,500						\$30,000 : \$7,500
5.4 Public Transportation Planning	\$150,000 : \$37,500						\$150,000 : \$37,500
5.5 Active Transportation Planning	\$10,000 : \$2,500						\$10,000 : \$2,500
5.6 Logistics Systems Planning	\$40,000 : \$10,000						\$40,000 : \$10,000
5.7 Congestion Management Process	\$50,000 : \$12,500			\$200,000 : \$50,000			\$250,000 : \$62,500
5.8 Transportation Safety Planning	\$10,000 : \$2,500						\$10,000 : \$2,500
<b>6.0 PROGRAM PLANNING</b>							
6.1 CommuteSmart (Rideshare)				\$1,200,000			\$1,200,000
6.2 Coordinated Human Services Transportation Planning	\$10,000 : \$2,500		\$50,000				\$60,000 : \$2,500
6.3 Building Communities				\$585,000			\$585,000 : \$146,250
<b>7.0 SPECIAL PROJECTS AND CORRIDOR MANAGEMENT PLANNING</b>							
7.1 U.S. 280 Corridor Alternatives Analysis		\$100,000 : \$25,000					\$100,000 : \$25,000
7.2 I-65/U.S. 31 Corridor Alternatives Analysis		\$50,000 : \$12,500					\$50,000 : \$12,500
7.3 U.S. 11 Southwest Corridor Alternatives Analysis		\$349,110 : \$87,278					\$349,110 : \$87,278
7.4 U.S. 11 East/U.S. 78 East Corridor Alternatives Analysis		\$1,994,819 : \$498,705					\$1,994,819 : \$498,705
7.5 U.S. 78 West Corridor Plan	\$20,000 : \$5,000					\$200,000 : \$50,000	\$20,000 : \$5,000
<b>State Planning and Research Funding (SPR)</b>							
TOTAL	\$1,050,273 : \$262,568	\$2,493,929 : \$623,482	\$50,000 : \$0	\$2,185,000 : \$246,250	\$1,500,000 : \$0	\$200,000 : \$50,000	\$7,479,202 : \$1,182,301

PL= \$875,273 (annual FY 2012 mark) + \$175,000 projected carryover from FY 2011 = \$1,050,273  
 Building Communities = \$525,000 (FY2012) + 60,000 projected carryover from FY2011 = \$585,000



The staff of the Regional Planning Commission of Greater Birmingham also serves as staff to the Birmingham Metropolitan Planning Organization

- █ Decision Makers
- █ Voting Committees
- █ Formal Subcommittees
- █ Ad Hoc Advisory Committees
- Formal Connections
- - - Ad Hoc Connections

